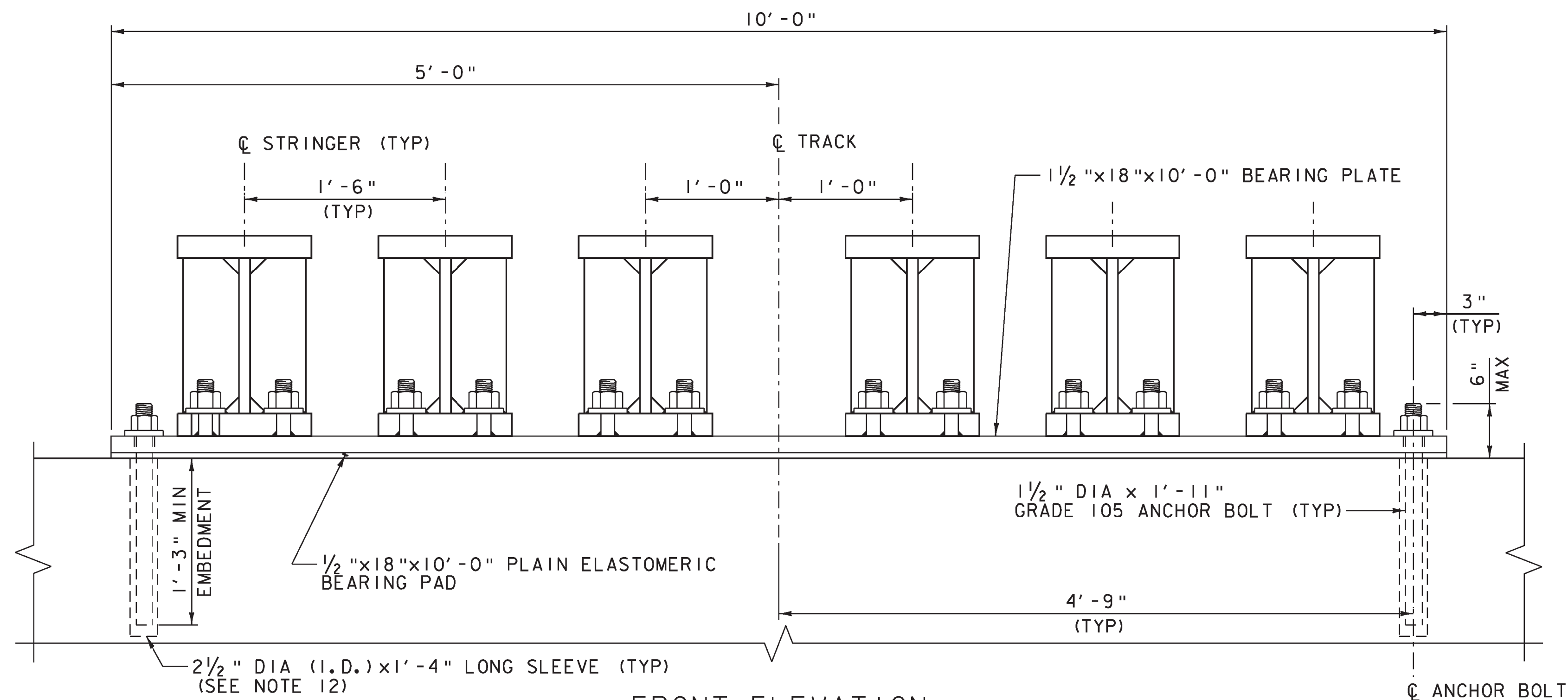
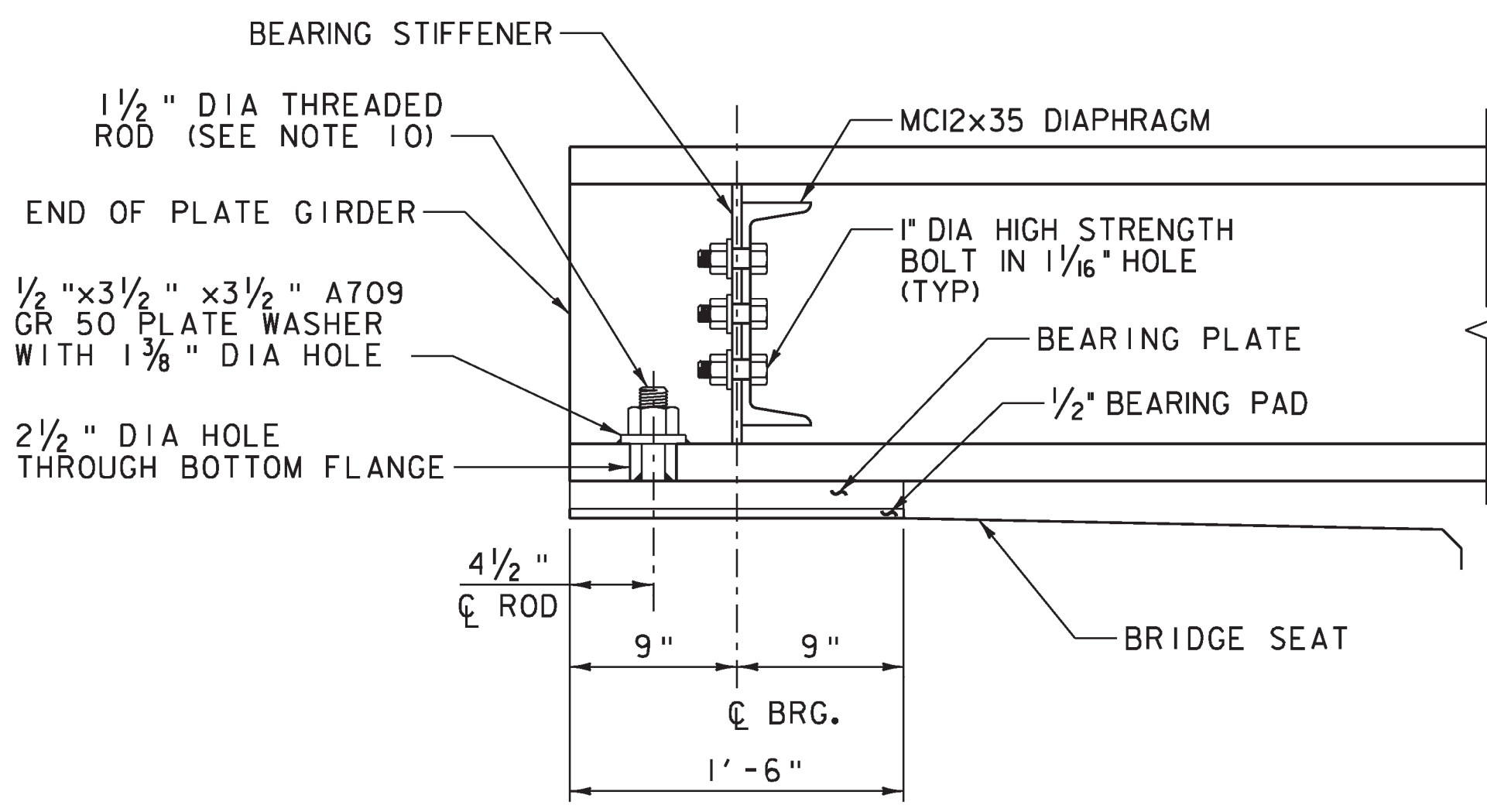


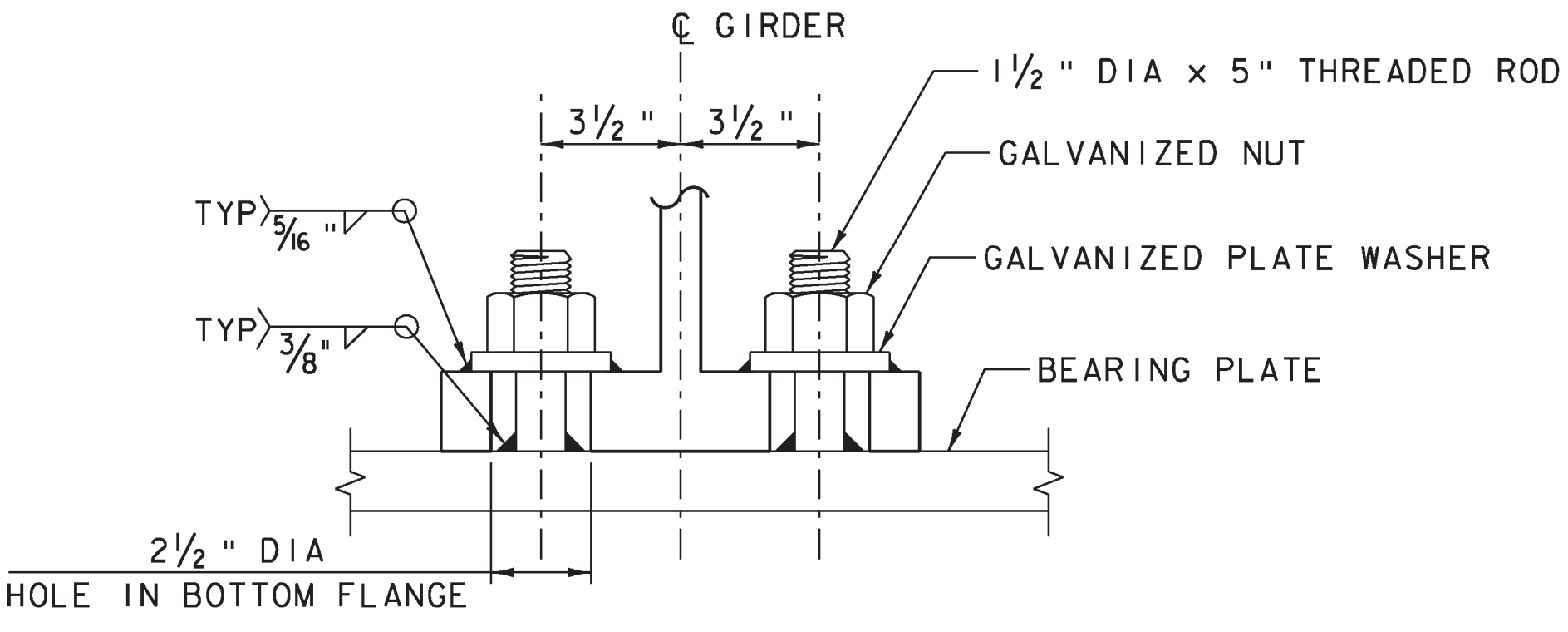
PLAN
SCALE: 1/2" = 1'-0"
(TYPICAL BOTH ABUTMENTS)



FRONT ELEVATION
SCALE: 1/2" = 1'-0"



SIDE ELEVATION
SCALE: 1/2" = 1'-0"
(ANCHOR BOLTS NOT SHOWN FOR CLARITY)



GALVANIZED THREADED ROD DETAIL
SCALE: 3" = 1'-0"

BEARING NOTES

- ALL BEARING WORK SHALL BE IN ACCORDANCE WITH AREMA PART 11 OF CHAPTER 15.
- ALL STEEL IN BEARING DEVICES SHALL BE ASTM A709, GRADE 36, GALVANIZED OR METALIZED PER SUBSECTION 726.08 OR 726.09, RESPECTIVELY.
- ALL BOLTS, NUTS AND WASHERS SHALL BE GALVANIZED, PER SUBSECTION 726.08.
- CHARPY V-NOTCH TOUGHNESS TESTS ARE NOT REQUIRED FOR STEEL USED IN BEARING COMPONENTS.
- ALL WELDING SHALL BE IN ACCORDANCE WITH THE CURRENT EDITION OF ANS1/AASHTO/AWS D1.5 BRIDGE WELDING CODE INCLUDING INTERIMS.
- ALL BEARING PLATES SHALL BE FLAT AND TRUE AFTER WELDING, UNLESS OTHERWISE INDICATED.
- ~~ALL BEARING COMPONENTS, INCLUDING BUT NOT LIMITED TO, THE BEARING PAD, BEARING PLATE, BOLTS, NUTS, AND WASHERS SHALL BE PAID FOR UNDER ITEM 531.16, "BEARING DEVICE ASSEMBLY, PLAIN ELASTOMERIC PAD". SEE SPECIALS~~
- FABRICATION DRAWINGS CONFORMING TO SUBSECTION 531.03 SHALL BE SUBMITTED PRIOR TO BEARING FABRICATION AND SHALL INCLUDE WELDING PROCEDURES.
- PLAIN ELASTOMERIC BEARING PAD DESIGN CRITERIA:
MAX BEARING PRESSURE ON PAD = 800 PSI
DESIGN LOAD PER BEARING IS 407 KIPS
BASE PLATE TO CONCRETE DESIGN PRESSURE= 1000 PSI
- THREADED ROD ASSEMBLY SHALL INCLUDE 1/2" x 5" A572 GR 50 GALVANIZED ROD WITH 2 1/2" OF THREAD. DO NOT THREAD FULL LENGTH. ALL COSTS FOR THREADED ROD ASSEMBLY SHALL BE INCLUDED IN THE UNIT PRICE BID FOR ITEM 531.16, "BEARING DEVICE ASSEMBLY, PLAIN ELASTOMERIC PAD".
- ANCHOR BOLTS SHALL BE GROUTED WITH ITEM 900.640 SPECIAL PROVISION (RAPID SETTING GROUT).
- PVC SLEEVES FOR ANCHOR BOLTS SHALL BE REMOVED PRIOR TO GROUTING ANCHOR BOLTS.
- THE NUTS FOR ALL BEARING ANCHOR BOLTS SHALL BE DRAWN UP FINGER TIGHT AND THEN BACKED OFF 1/8 TURN.
- THREADS SHALL BE BURRED ABOVE THE NUT TO PREVENT NUT REMOVAL.
- ANCHOR BOLTS SHALL BE SWEDGED ASTM F1554 GRADE 105 WITH 4" THREAD. NUTS SHALL BE A563 GRADE DH OR ASTM A194 GRADE 2H HEAVY HEX. WASHERS SHALL BE ASTM F-436. BOLTS, NUTS AND WASHERS SHALL BE GALVANIZED. GALVANIZED BOLTS, NUTS AND WASHERS SHALL CONFORM TO VTRANS STANDARD SPECIFICATION FOR CONSTRUCTION, SUBSECTION 714.08.

PROJECT NAME: DORSET	PLOT DATE: 5/2/2014
PROJECT NUMBER: WCRS(8)	DRAWN BY: J.W. GOLEK
FILE NAME: z08g224detailbearings.dgn	CHECKED BY: B.O. CRONIN
PROJECT LEADER: A.P. GUYETTE	SHEET 21 OF 33
DESIGNED BY: J.W. GOLEK	
BEARING DETAILS	

