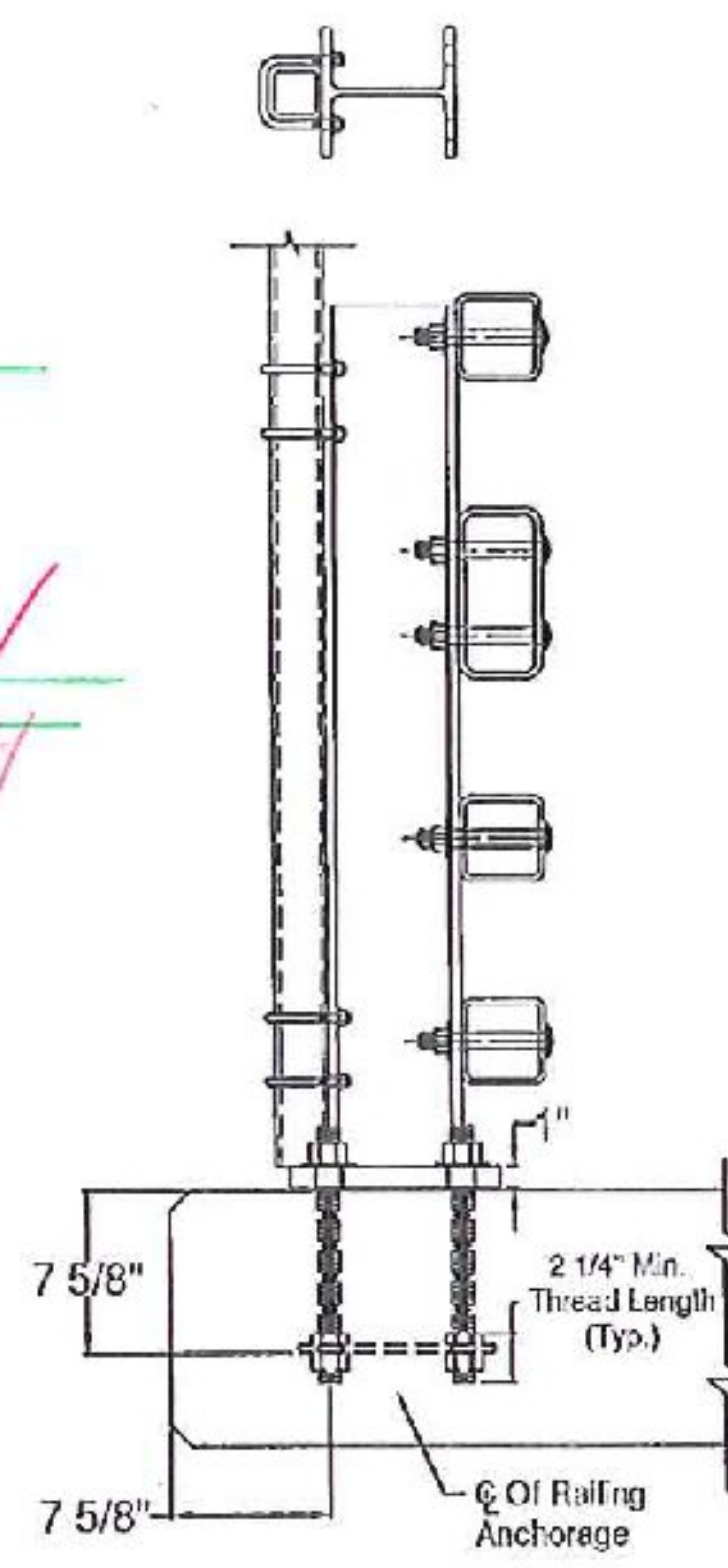
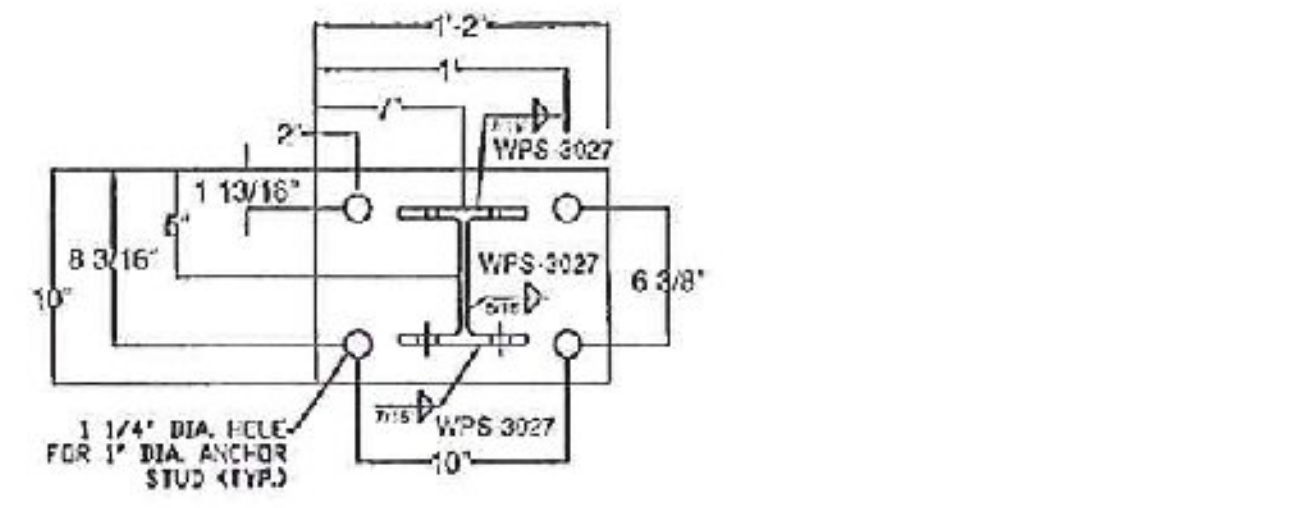


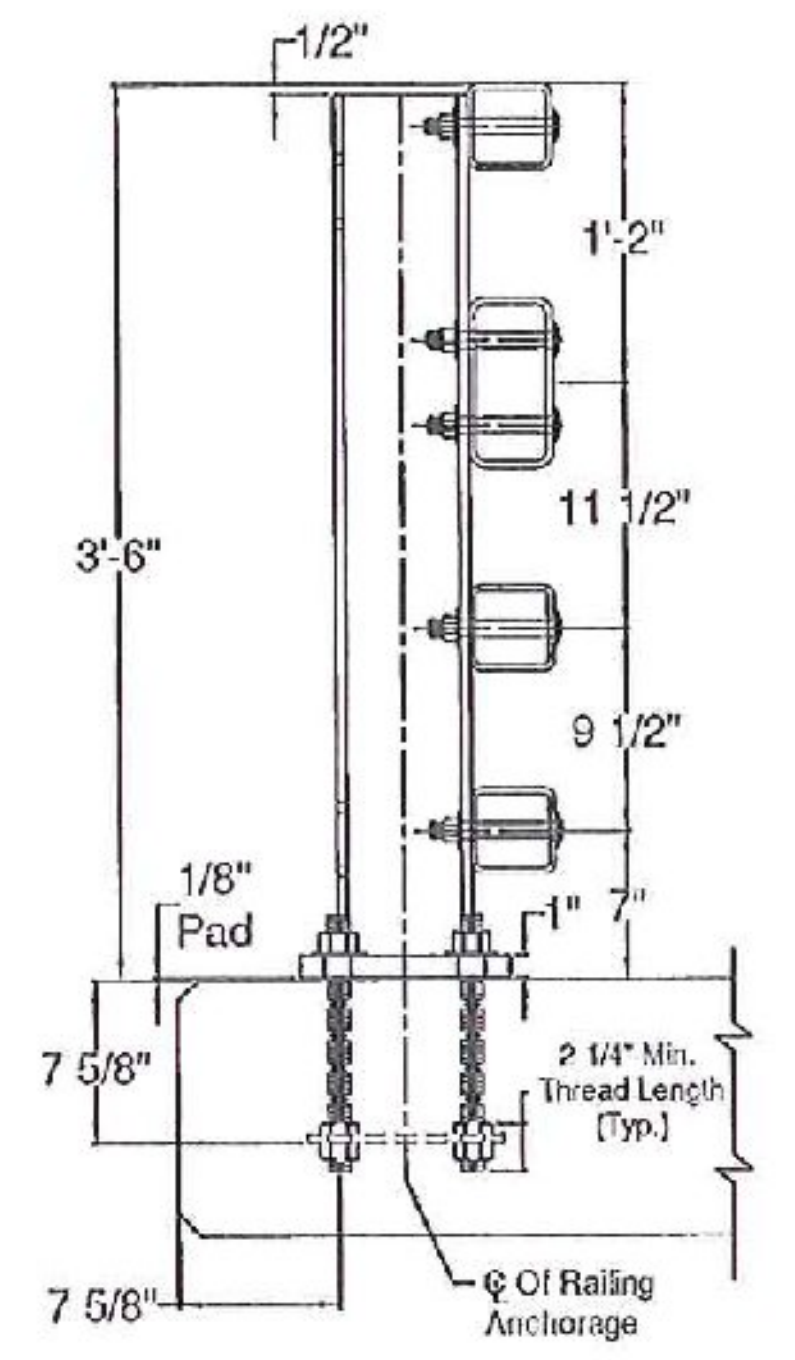
North Railing Facing North

- NOTES
1. ALL WORK AND MATERIALS SHALL CONFORM TO SECTION 525.
 2. ALL EXPOSED CUT OR SHEARED EDGES SHALL BE ROUNDED TO A $\frac{1}{16}$ " RADIUS AND BE FREE OF BURRS.
 3. RAIL POSTS SHALL BE SET NORMAL TO GRADE.
 4. SECTIONS OF RAIL TUBE SHALL BE ATTACHED TO A MINIMUM OF TWO (2) RAIL POSTS AND PREFERABLY TO AT LEAST FOUR (4) POSTS.
 5. RAIL TUBE EXPANSION JOINTS SHALL PROVIDED IN ANY RAIL BAY SPANNING A SUPERSTRUCTURE EXPANSION JOINT. EXPANSION JOINT WIDTH SHALL BE 4" AT 45° F AND WILL BE ADJUSTED IN THE FIELD BY THE ENGINEER FOR OTHER TEMPERATURES.
 6. RAIL POSTS ANCHORING NUTS SHALL BE TIGHTENED TO A SNUG FIT AND GIVEN AN ADDITIONAL ONE-EIGHTH TURN.
 7. RAIL TUBES SHALL BE ATTACHED USING 3/4" FULL DIAMETER BODY ROUND HEAD BOLTS INSERTED THROUGH THE RACE OF THE TUBE. HOLES IN POSTS SHALL BE 1/16" LARGER THAN THE BOLT SIZE.
 8. HOLES IN RAILS FOR RAIL TUBE ATTACHMENT MAY BE FIELD-DRILLED. HOLES SHALL BE COATED WITH AN APPROVED ZINC RICH PAINT PRIOR TO ERECTION.
 9. ANY BENDING OF RAIL SHALL BE BY SHOP PROCEDURE ONLY.
 10. THE FABRICATOR SHALL SUBMIT FABRICATION DRAWINGS INCLUDING WELDING PROCEDURES TO THE STRUCTURES ENGINEER FOR APPROVAL. ALL WELDING SHALL CONFORM WITH SUBSECTION 506.10.
 11. FOR MORE INFORMATION AND REQUIREMENTS REGARDING ORNAMENTAL FENCE, SEE THE SPECIAL PROVISIONS.
 12. ALL STEEL BRIDGE RAILING, ORNAMENTAL FENCE, AND APPROACH GUARDRAIL COMPONENTS SHALL BE POWDER COATED BLACK AFTER GALVANIZING IN ACCORDANCE WITH ASTM D7803. COLOR SHALL MATCH EXISTING WROUGHT IRON FENCE ADJACENT TO THE BRIDGE ALONG RED MILL DRIVE.

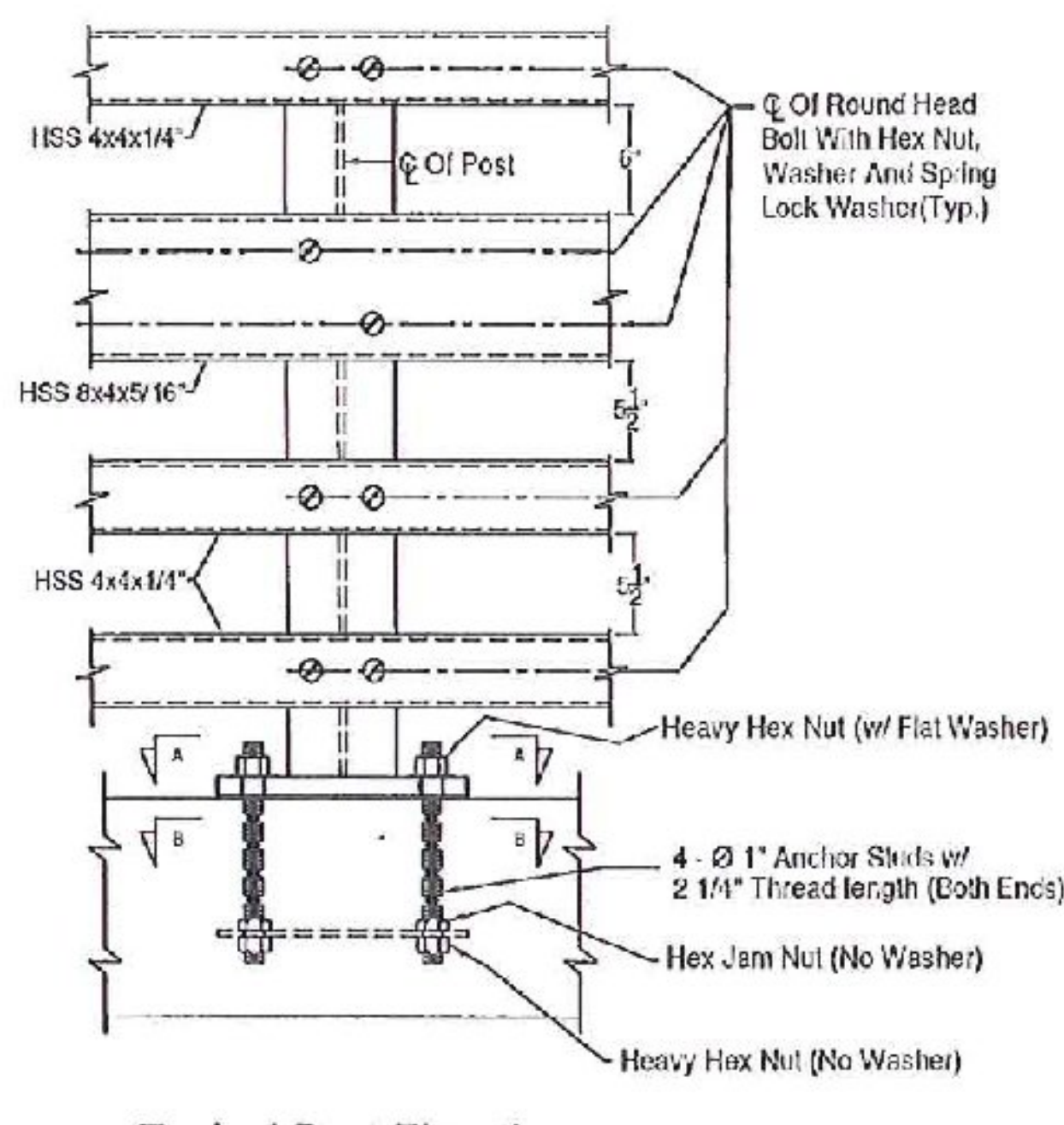
VTrans
Received
OK'd BY *Jux*
AUG 06 2014
Resubmit BY _____ APPROVED DATE *8/12/14*



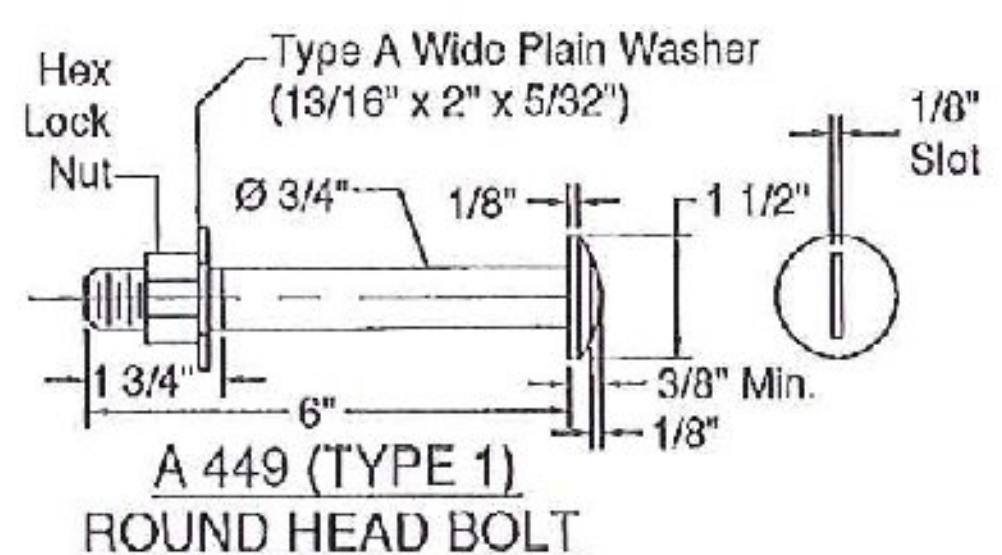
Typical Post Section



Typical Post Section
Fencing not Shown for Clarity



Typical Post Elevation



A 449 (TYPE 1)
ROUND HEAD BOLT

POWDER COATED BLACK AFTER GALV. PER ASTM D7803

QTY	PART #	DESCRIPTION	ASTM DESIGNATION
15	0033.90359	FOUR RAIL POST @ 3'-5-3/8" O.A. w/HOLES FOR FPC	A572 Gr. 50
3	0033.91155	4' X 4' X 1/4" RAIL @ 9'-2"	A500 Gr. B
3	0033.91156	4' X 4' X 1/4" RAIL @ 18'-9-3/4"	A500 Gr. B
3	0033.91157	4' X 4' X 1/4" RAIL @ 30'-11-1/2"	A500 Gr. B
3	0033.91158	4' X 4' X 1/4" RAIL @ 20'-9-3/4"	A500 Gr. B
3	0033.91159	4' X 4' X 1/4" RAIL @ 17'-8"	A500 Gr. B
1	0033.91160	4' X 8' X 5/16" RAIL @ 9'-2"	A500 Gr. B
1	0033.91161	4' X 8' X 5/16" RAIL @ 18'-9-3/4"	A500 Gr. B
1	0033.91162	4' X 8' X 5/16" RAIL @ 30'-11-1/2"	A500 Gr. B
1	0033.91163	4' X 8' X 5/16" RAIL @ 20'-9-3/4"	A500 Gr. B
1	0033.91164	4' X 8' X 5/16" RAIL @ 17'-8"	A500 Gr. B
6	0033.90052	3' X 3' X 5/16" FIX. SPL. TUBE @ 1'-8"	A500 Gr. B
2	0033.90033	3' X 7' X 3/8" FIX. SPL. TUBE @ 1'-8"	A500 Gr. B
6	0033.90352	3' X 3' X 5/16" EXP. SPL. TUBE @ 1'-11-3/4"	A500 Gr. B
2	0033.90353	3' X 7' X 3/8" EXP. SPL. TUBE @ 1'-11-3/4"	A500 Gr. B
15	0033.00299	3/8" X 9 3/8" X 13" ANCHOR PLATE	A36
15	0033.00052	1/8" FIBER PAD @ 10" X 14"	AASHTO M251
60	0042.21012	Ø 1" X 12" ANCHOR STUD W/ 2 1/4" w/MINIMUM THREAD	A449 Gr. 1
120	0080.18901	Ø 1" HEAVY HEX NUT	A563
60	0080.18905	Ø 1" HEX JAM NUT	A325
60	0080.18911	Ø 1" FLAT WASHER	F436
120	0080.06290	Ø 3/4" X 6" BUTTON HEAD BOLT w/SLOTTED HEAD	A449
120	0080.16911	Ø 3/4" FLAT WASHER	F436
120	0080.16901	Ø 3/4" DH HEAVY ANCD LOCK NUT	A563
64	0080.05045	Ø 5/8" X 1 3/4" HEX BOLT & F.W.	A307
32	0033.90053	3/4" Ø SCHD. 40 PIPE SPACER @ 1/2"	ASTM A500 or A53 Gr. B
60	00	Ø 3/8" X 2-5/8" X 4-1/8" SQUARE "U" BOLT (1-1/2" THREAD)	A36
120	0080.05045	Ø 3/8" HEX NUT	A307
120	0080.13910	Ø 3/8" FLAT WASHER	A307
120	00	Ø 3/8" SPLIT LOCK WASHER	ASME B18.21.1

ITEM #: 525.34 GEN CONTR: F.R. LAFAYETTE, P.O. 29045 SHEET 1 OF 2

APPROVED BY: _____

BRIDGE RAIL DETAILS SHEET

PROJECT: TOWN OF JERICHO COUNTY OF CHITTENDEN VT. 15 (MINOR ARTERIAL) PEDESTRIAN BRIDGE JERICHO FTER (3)

R NO.	DATE	DESCRIPTION	BY	R NO.	DATE	DESCRIPTION	BY

ELDERLEE, INC.
OAKS CORNERS, NEW YORK 14618
E-Mail: dlong@elderlee.com
Tel: 315-789-6670 Fax: 315-789-6616

DRAWN: D.L. 7/23/2014
CHECKED: E.P. 7/23/2014
APPROVED: _____
SCALE: _____
SCHEMATIC
DRAWING NO. F.R.L. JERICHO 29045