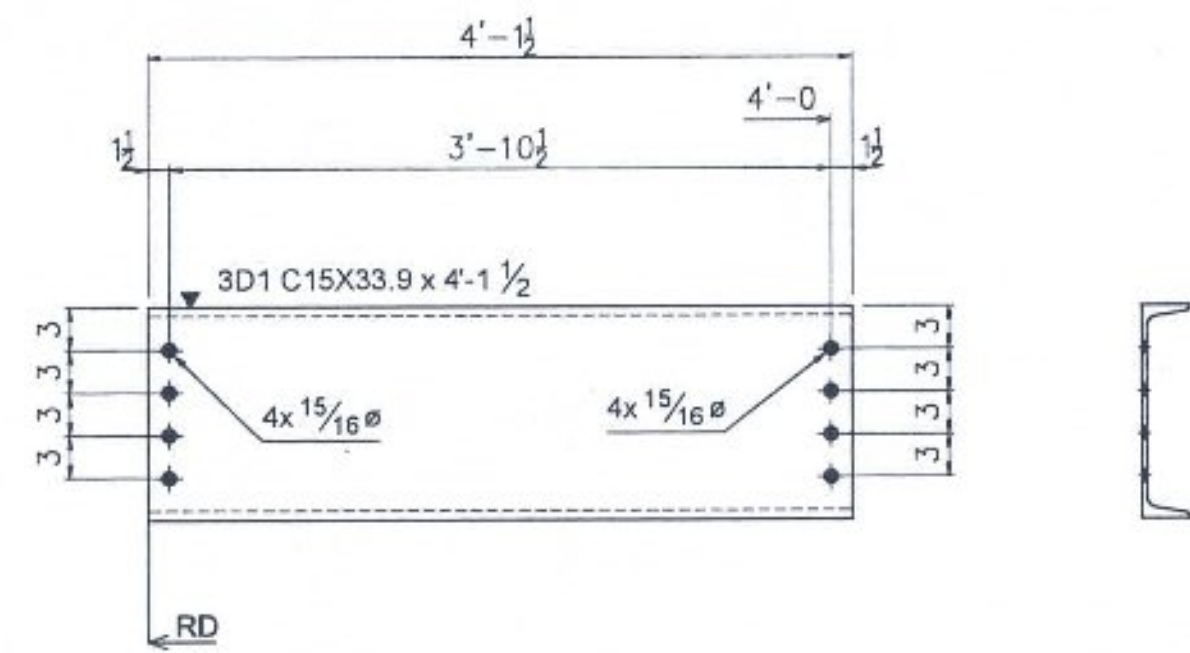


ABM INFO	SHIP	BILL OF MATERIAL			JOB NO.	DWG NO.	REV.			
		LINE	MARK	QTY	DESCRIPTION	LENGTH	GRADE	NOTE	WGHT	TOTAL
				6	C15X33.9					0
1	3D1	6	C15X33.9	4'-1 1/2"	M270-50W			139	831	
		6						139	831	
		6						TOTAL WEIGHT THIS DRAWING:		831



6 - **3D1** C15X33.9 x 4'-1 1/2"
 d=1'-3" b=3 3/8" t=5/8" w=3/8" k=1 5/16"

- NO EXCEPTION TAKEN
- REJECTED
- SUBMIT SPECIFIED ITEM
- MAKE CORRECTIONS NOTED
- REVISE AND RESUBMIT

CHECKING IS ONLY FOR GENERAL CONFORMANCE WITH THE DESIGN CONCEPT OF THE PROJECT AND GENERAL COMPLIANCE WITH THE INFORMATION GIVEN IN THE CONTRACT DOCUMENTS. ANY ACTION SHOWN IS SUBJECT TO THE REQUIREMENTS OF THE PLANS AND SPECIFICATIONS. CONTRACTOR IS RESPONSIBLE FOR DIMENSIONS WHICH SHALL BE CONFIRMED AND CORRELATED AT THE JOB SITE; FABRICATION PROCESSES AND TECHNIQUES OF CONSTRUCTION; COORDINATION OF HIS WORK WITH THAT OF ALL OTHER TRADES AND THE SATISFACTORY PERFORMANCE OF THE WORK.

DATE 08/07/2014 BY CHA LIT

REV.	DATE	ISSUED FOR APPROVAL	REVISION NOTE	By
0	7/22/2014			
MATERIAL:		SURFACE PREP. AND PAINT:	HOLES:	SHOP BOLTS:
AASHTO M270-GR50W		N/A	15/16" U.N.O.	7/8" U.N.O.
J.N.O.				
DESCRIPTION: FABRICATION DETAILS-DIAPHRAGMS				
CASCO BAY STEEL STRUCTURES, INC.				
1 WALLACE AVE.		PHONE (207) 780-6722		
SOUTH PORTLAND, ME 04106		FAX: (207) 780-6726		
STRUCTURE:	DRAWN:	DATE:		
VERMONT ROUTE 15 OVER BROWNS RIVER	ID	07/22/14		
	CHECKED:	DATE:		
	AD	07/22/14		
LOCATION:	TOWN OF JERICHO, VT	JOB NO.	DWG NO.	
PROJECT NO.	STP FTBR (3)	576	3	
CUSTOMER:	Blow & Cote, INC.		REV.	0