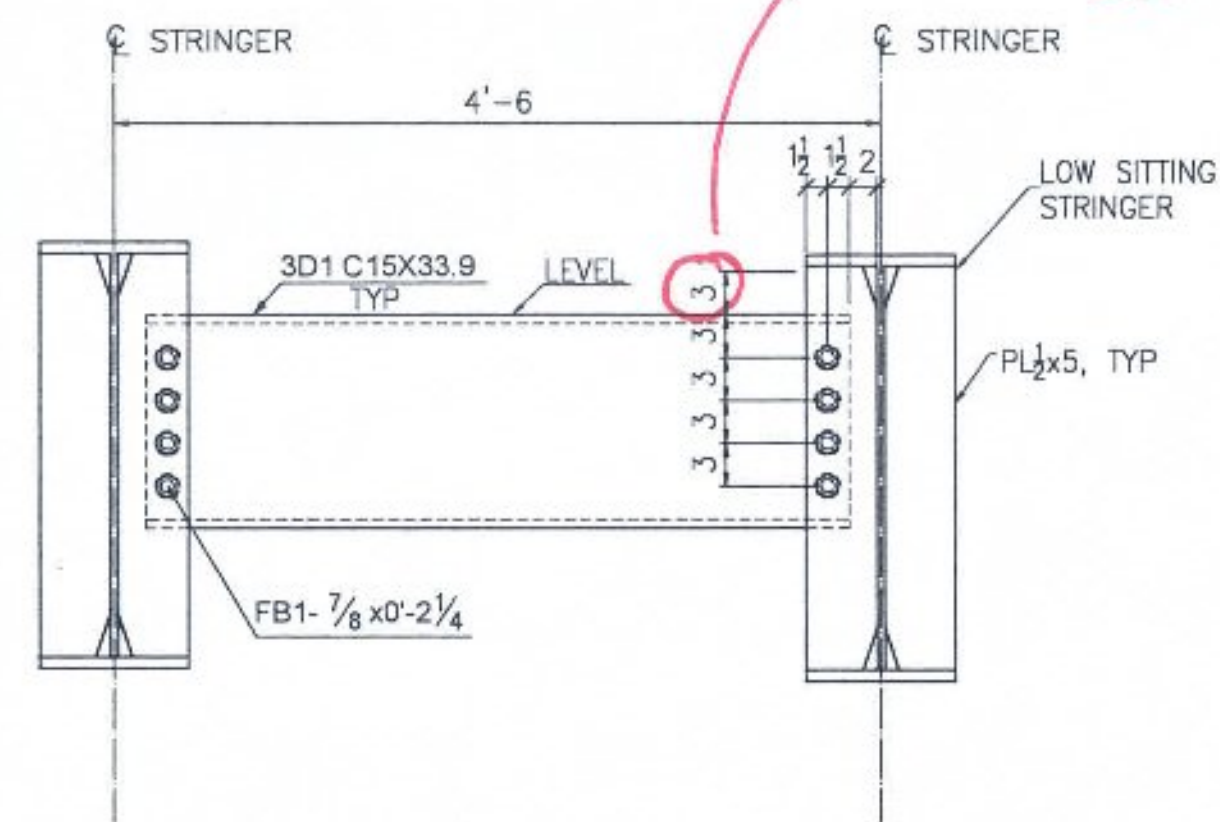


JERICO-STP FTBR (3)
TYP ELEVATION AT BLOCKOUT PLATES



JERICO-STP FTBR (3)
TYP ELEVATION AT END DIAPHRAGMS
(INTERMEDIATE DIAPHRAGMS-SIM)

FIELD BOLTS - EXACT QUANTITIES												
MARK:	QUANTITY:	DIAMETER:	LENGTH:	BOLTS PER CONNECTION:	No. OF CONNECTIONS:	GRIP:	PLY 1:	PLY 2:	PLY 3:	PLY 4:	PLY 5:	REMARK:
FB1	48	7/8"	2 1/2"	4	12	7/8"	1	1	1			A325 TYPE 3, AT DIAPHRAGMS
HEX NUT	48	7/8"										A563-DH3
FLAT WASHER	48	7/8"										F436-3

- NO EXCEPTION TAKEN
 REJECTED
 MAKE CORRECTIONS NOTED
 REVISE AND RESUBMIT
 SUBMIT SPECIFIED ITEM

CHECKING IS ONLY FOR GENERAL CONFORMANCE WITH THE DESIGN CONCEPT OF THE PROJECT AND GENERAL COMPLIANCE WITH THE INFORMATION GIVEN IN THE CONTRACT DOCUMENTS. ANY ACTION SHOWN IS SUBJECT TO THE REQUIREMENTS OF THE PLANS AND SPECIFICATIONS. CONTRACTOR IS RESPONSIBLE FOR DIMENSIONS WHICH SHALL BE CONFIRMED AND CORRELATED AT THE JOB SITE; FABRICATION PROCESSES AND TECHNIQUES OF CONSTRUCTION; COORDINATION OF HIS WORK WITH THAT OF ALL OTHER TRADES; AND THE SATISFACTORY PERFORMANCE OF THE WORK.

DATE 08/07/2014 BY CHA 115

REV:	DATE:	ISSUED FOR APPROVAL	
REVISION NOTE:		By	
0	7/22/2014	ISSUED FOR APPROVAL	
MATERIAL: WSH TO M270-CR-50W U.N.O.		SURFACE PREP. AND PAINT: N/A	
HOLES: 15/16" U.N.O.		SHOP BOLTS: 7/8" U.N.O.	
DESCRIPTION: ERECTION DETAILS, FIELD BOLTS			
CASCO BAY STEEL STRUCTURES, INC. 1 WALLACE AVE. SOUTH PORTLAND, ME 04106 PHONE (207) 780-6722 FAX: (207) 780-6726			
STRUCTURE: VERMONT ROUTE 15 OVER BROWNS RIVER		DRAWN: AD	DATE: 07/22/14
LOCATION: TOWN OF JERICO, VT		CHECKED: AD	DATE: 07/22/14
PROJECT NO. STP FTBR (3)		JOB NO. 576	DWG NO. E3
CUSTOMER: Blow & Cote, INC.		REV. 0	