

GENERAL FABRICATION NOTES

1. WORKMANSHIP:

WORKMANSHIP SHALL BE IN ACCORDANCE WITH LATEST EDITION OF AREMA SPECIFICATIONS, VTDOT SPECIFICATIONS AND AWS D1.5 BRIDGE WELDING CODE

2. MATERIAL:

STRUCTURAL STEEL SHALL CONFORM TO AASHTO M270-GR.50W U.N.O.
 STRINGERS No. 1 AND 2 REQUIRE ZONE 2 CVN TESTING.
 STRINGERS No. 1 AND 2 ARE FRACTURE CRITICAL MEMBERS (FCM), SHALL MEET THE REQUIREMENTS SPECIFIED IN THE CURRENT EDITION OF THE AASHTO / AWS BRIDGE WELDING CODE, SECTION 12

3. FASTENERS AND ANCHOR BOLTS:

BOLTS SHALL BE 3/8" Ø ASTM A325 TYPE 3 WITH ONE NUT AND ONE WASHER EA U.N.O.
 HEAVY HEX NUTS-ASTM A563 - DH3
 WASHERS-ASTM F436 - 3

4. WELDING:

WELDING SHALL BE IN ACCORDANCE WITH AWS D1.5 BRIDGE WELDING CODE. STIFFENER TO MAIN MEMBER FILLET WELDS NEED TO BE MT TESTED.

5. SURFACE PREPARATION:

N/A **- FINAL SURFACE PREPARATION GRADE SSPC - SP10 PER 506.14**

6. PAINTING:

N/A

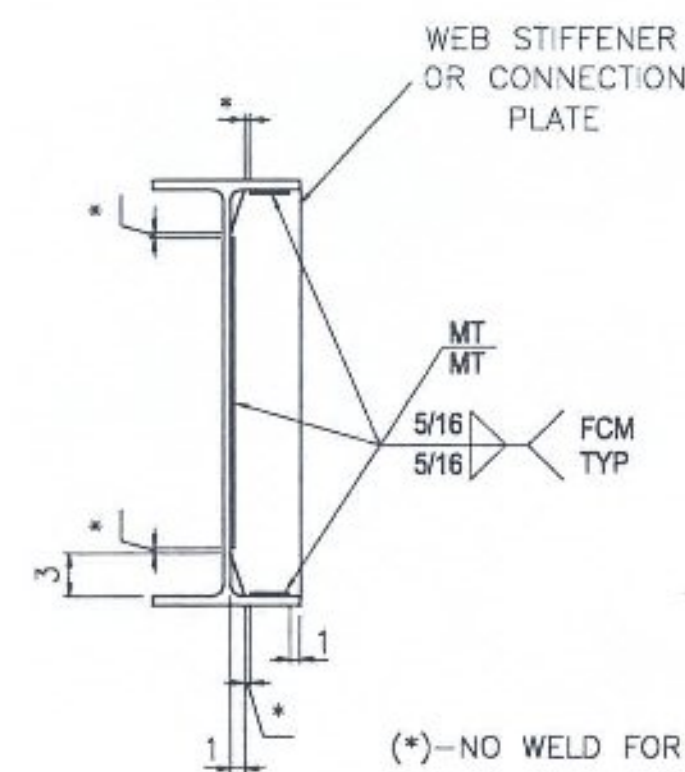
7. GALVANIZING:

N/A

8. INSPECTION NOTE:

INSPECTION TO BE PERFORMED BY VTDOT OR DESIGNATED REPRESENTATIVE

DRAWING INDEX	
DWG:	DESCRIPTION:
GN1	GENERAL NOTES
E1	ISOMETRIC VIEW
E2	FRAMING PLAN
E3	ERECTION DETAILS
WS1	CALCULATION PLAN
X1	JOB STANDARDS
C2	CAMBER DIAGRAM
3	FABRICATION DETAILS-DIAPHRAGMS
4	FABRICATION DETAILS-STRINGER No. 1
5	FABRICATION DETAILS-STRINGER No. 2



(*)-NO WELD FOR 1/8" MIN AND 1/2" MAX.
 MUST MAINTAIN 1" MIN FROM EDGE OF FLANGE

DETAIL 'WS1'
 TYPICAL CLIP AND WELD
 TERMINATION DETAIL

PAY ITEMS:

506.50-STRUCTURAL STEEL-ROLLED BEAM-UNPAINTED

- NO EXCEPTION TAKEN
- MAKE CORRECTIONS NOTED
- REJECTED
- REVISE AND RESUBMIT
- SUBMIT SPECIFIED ITEM

CHECKING IS ONLY FOR GENERAL CONFORMANCE WITH THE DESIGN CONCEPT OF THE PROJECT AND GENERAL COMPLIANCE WITH THE INFORMATION GIVEN IN THE CONTRACT DOCUMENTS. ANY ACTION SHOWN IS SUBJECT TO THE REQUIREMENTS OF THE PLANS AND SPECIFICATIONS. CONTRACTOR IS RESPONSIBLE FOR DIMENSIONS WHICH SHALL BE CONFIRMED AND CORRELATED AT THE JOB SITE; FABRICATION PROCESSES AND TECHNIQUES OF CONSTRUCTION; COORDINATION OF HIS WORK WITH THAT OF ALL OTHER TRADES AND THE SATISFACTORY PERFORMANCE OF THE WORK.

DATE **08/07/2014** **CHA** **115**

REV:		DATE:	ISSUED FOR APPROVAL	
MATERIAL:		SURFACE PREP. AND PAINT:	HOLES:	SHOP BOLTS:
AASHTO M270-GR50W U.N.O.		N/A	15/16" Ø U.N.O.	7/8" Ø U.N.O.
DESCRIPTION: GENERAL NOTES				
CASCO BAY STEEL STRUCTURES, INC. 1 WALLACE AVE. PHONE (207) 780-6722 SOUTH PORTLAND, ME 04106 FAX: (207) 780-6726				
STRUCTURE:		DRAWN:	ID	DATE:
VERMONT ROUTE 15 OVER BROWNS RIVER		CHECKED:	AD	07/22/14
LOCATION: TOWN OF JERICO, VT		JOB NO.	576	DWG NO. GN1
PROJECT NO. STP FTBR (3)		CUSTOMER:	Blow & Cote, INC.	REV. 0