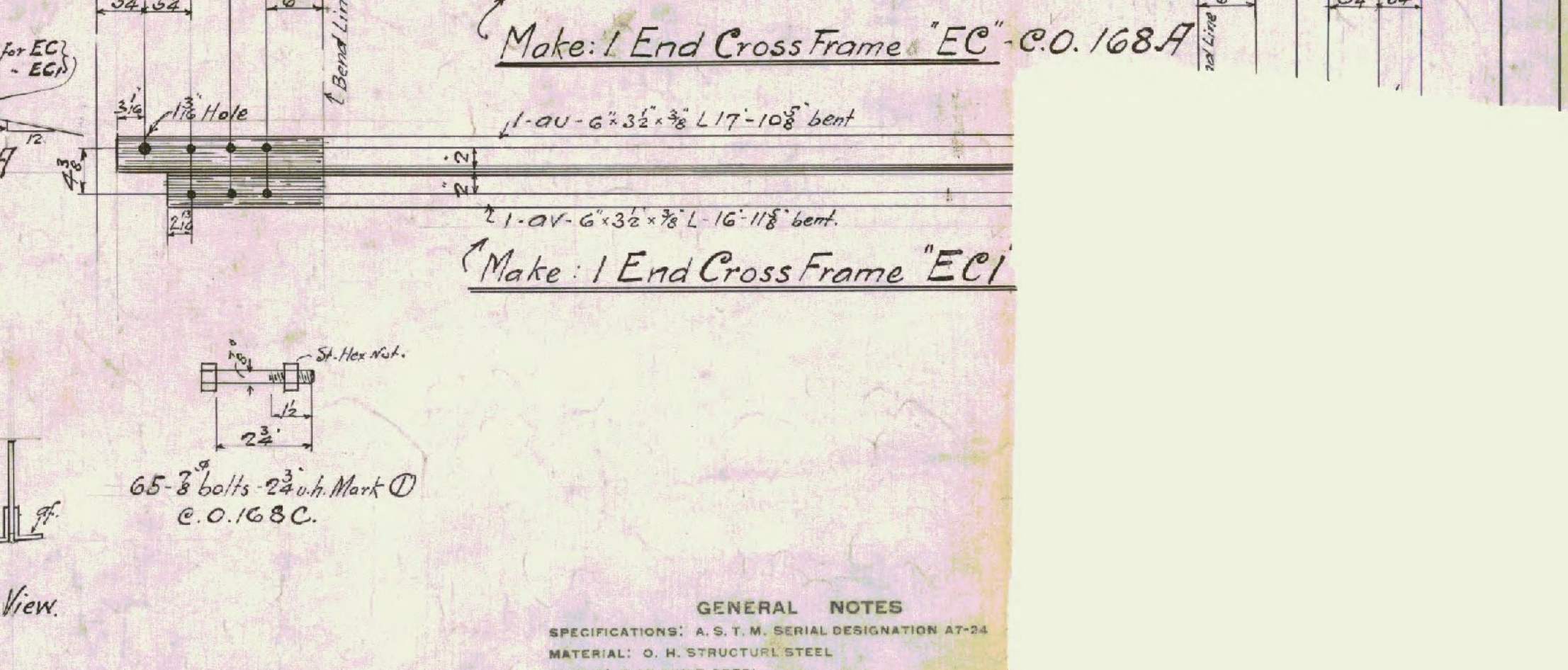
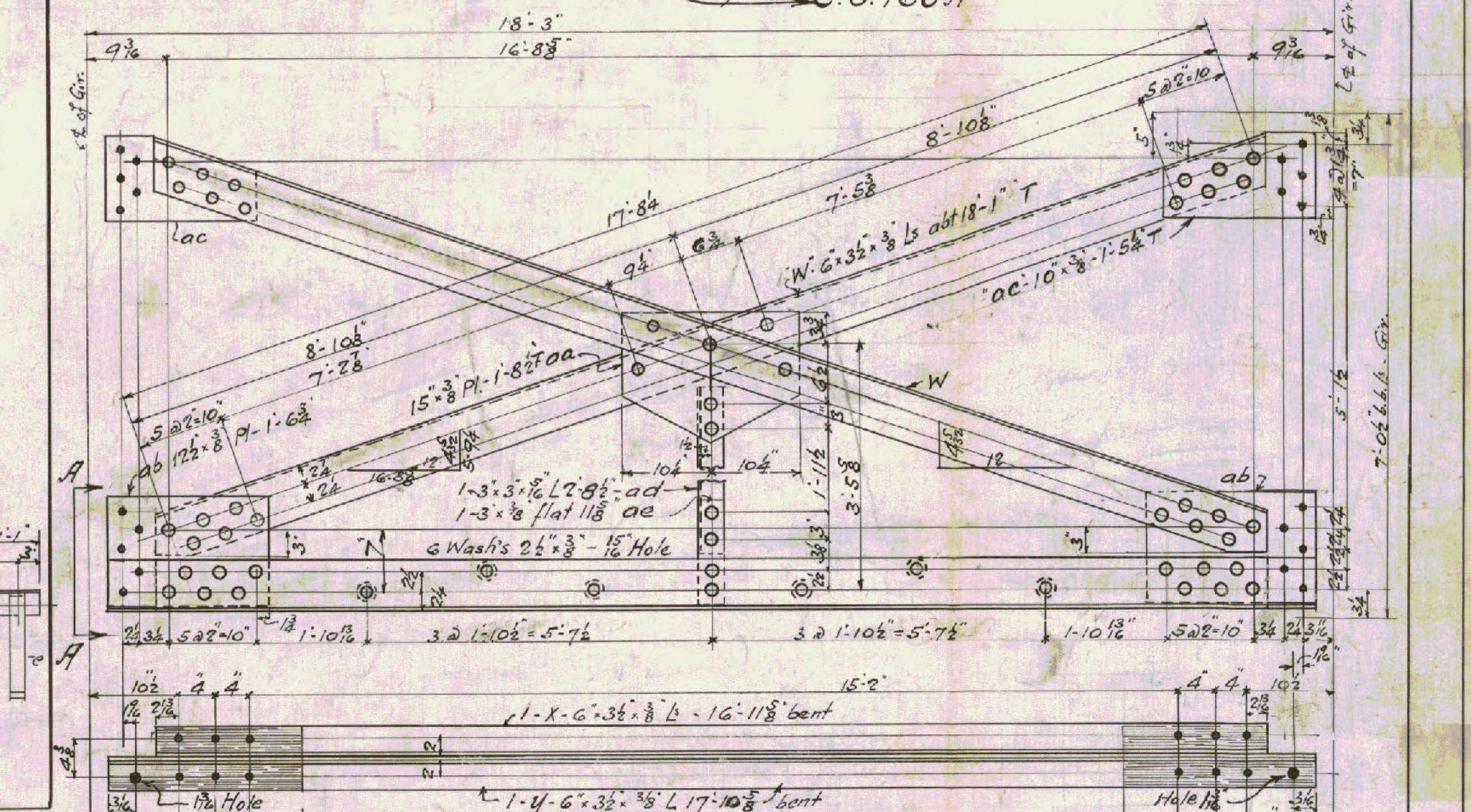
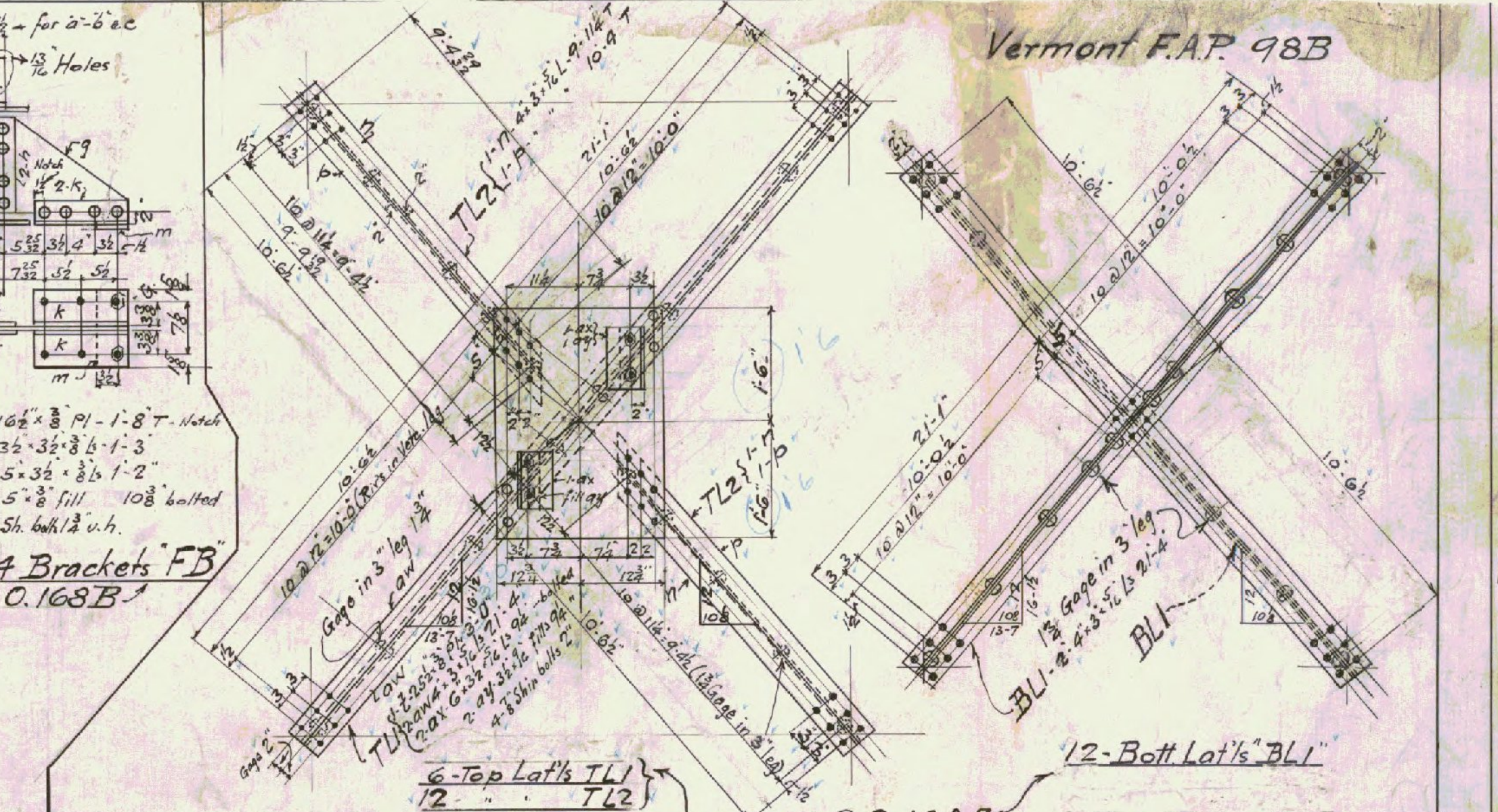
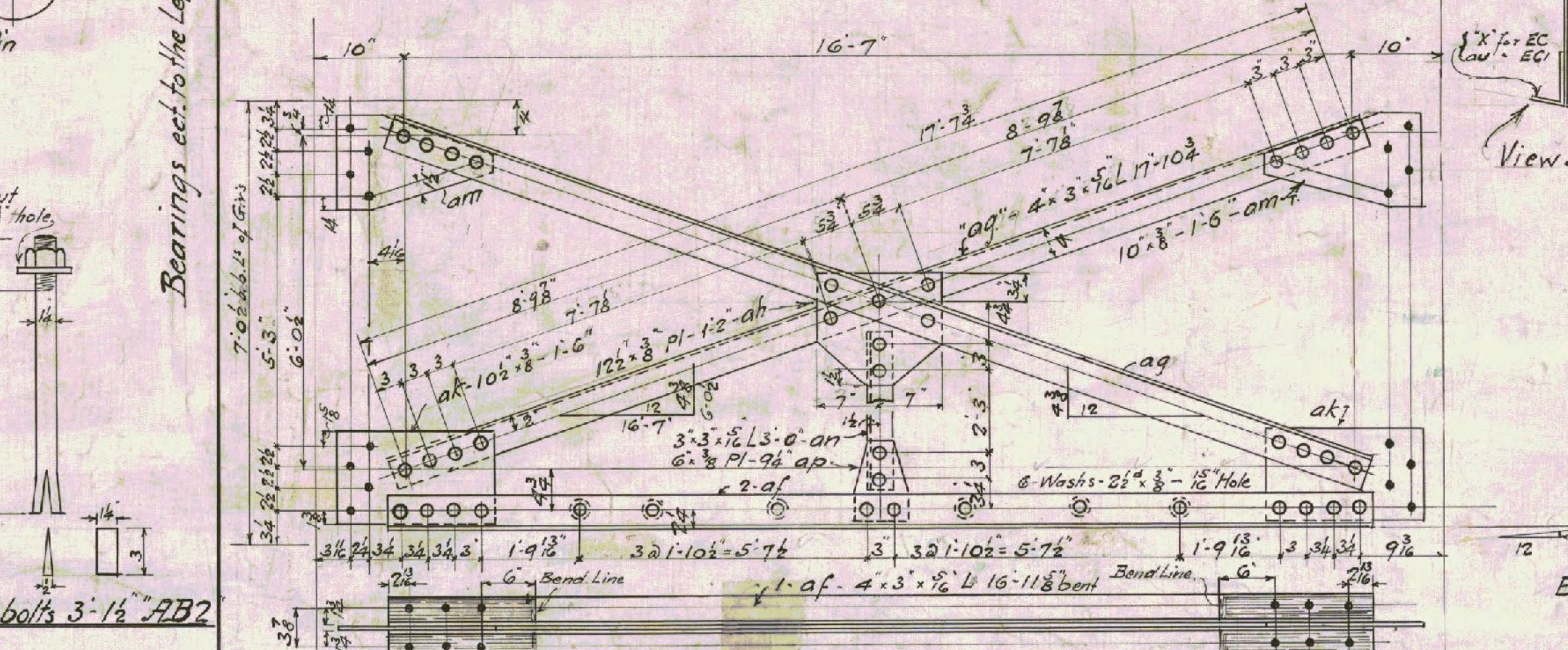
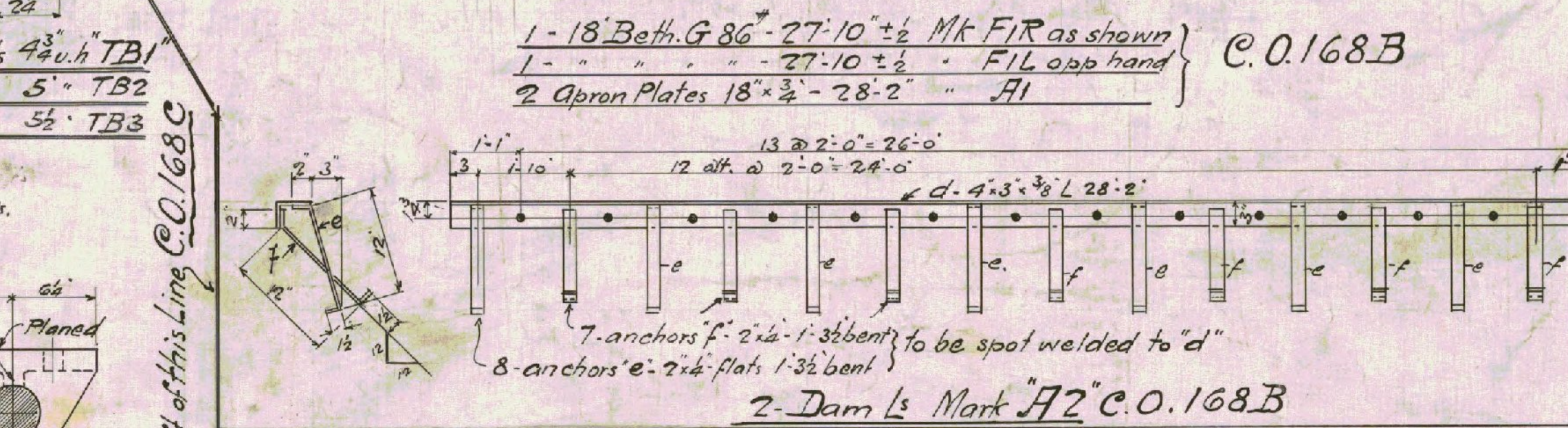
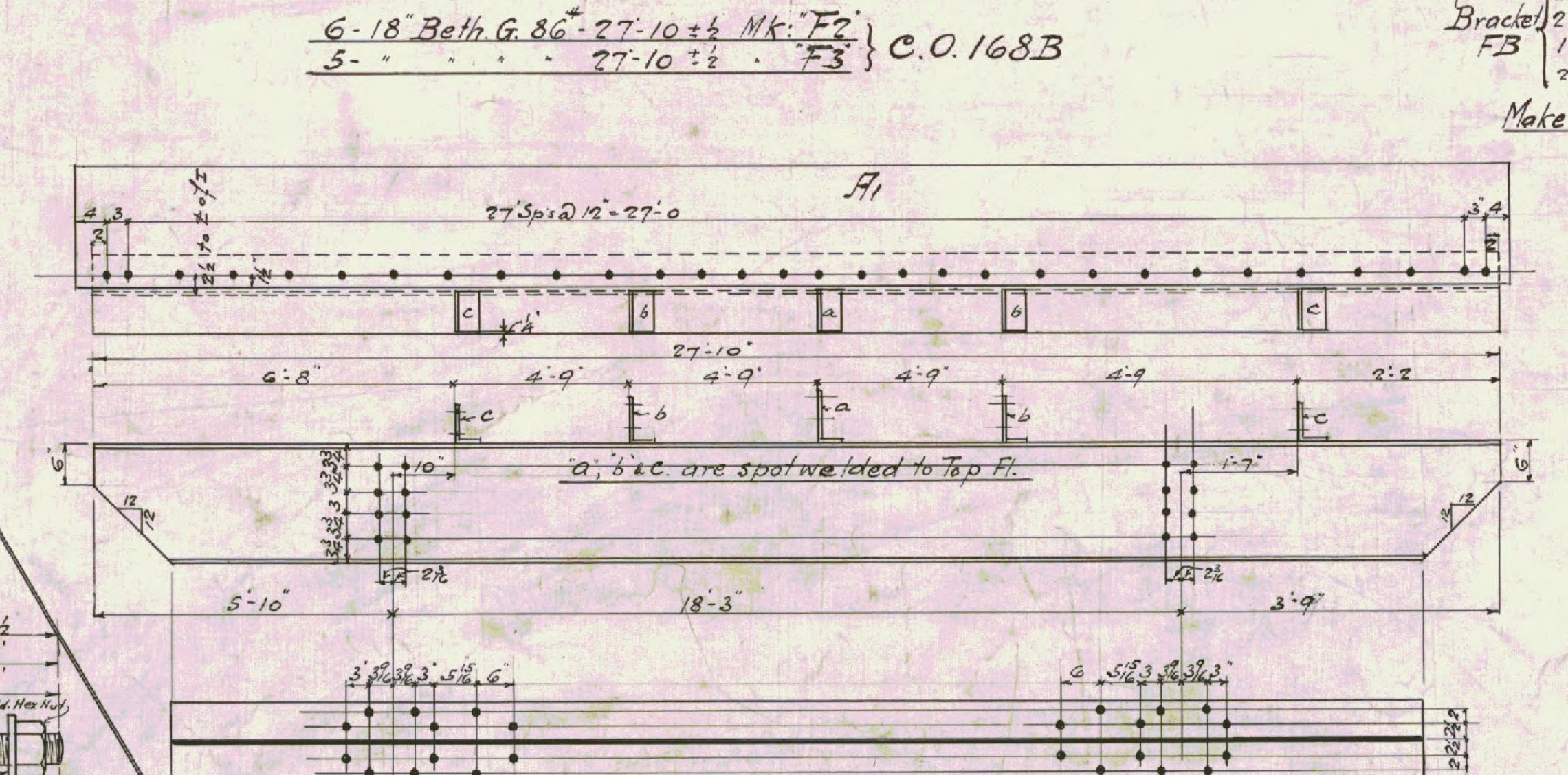
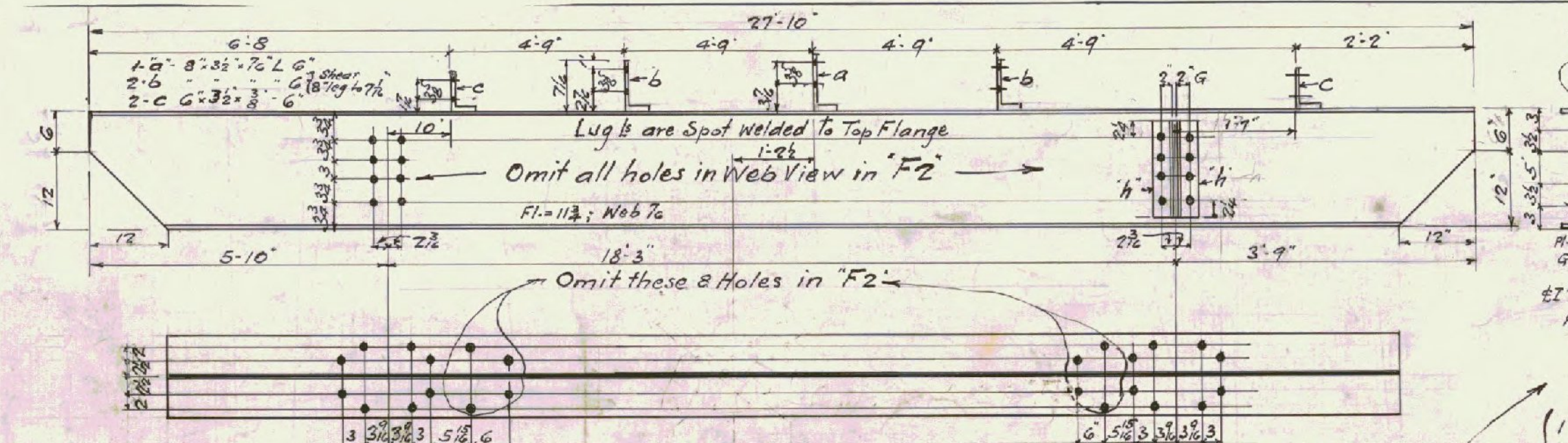


All Steel Castings to be annealed. Machined surfaces to be coated with White Lead & Tallow.



GENERAL NOTES
SPECIFICATIONS: A. S. T. M. SERIAL DESIGNATION A7-21
MATERIAL: O. H. STRUCTURAL STEEL
RIVETS: 1/4" RIVET STEEL
RIVET AND OPEN HOLES PUNCHED FULL SIZE 10-16" UNLESS SHOWN
SHOP PAINT: ONE COAT RED LEAD & OIL
ALL EDGE DISTANCES NOT GIVEN: 1/2" LAST ASSEMBLY