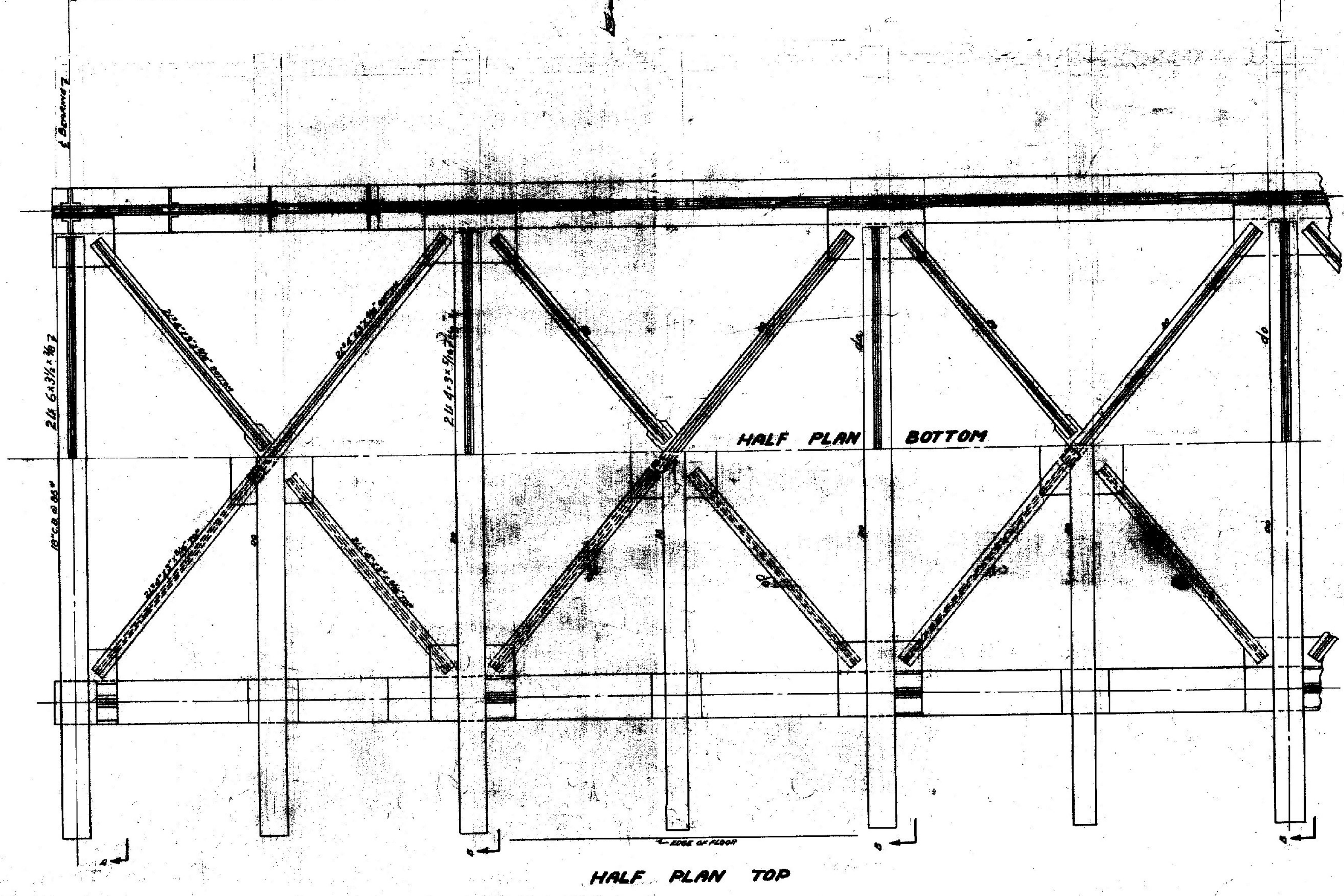
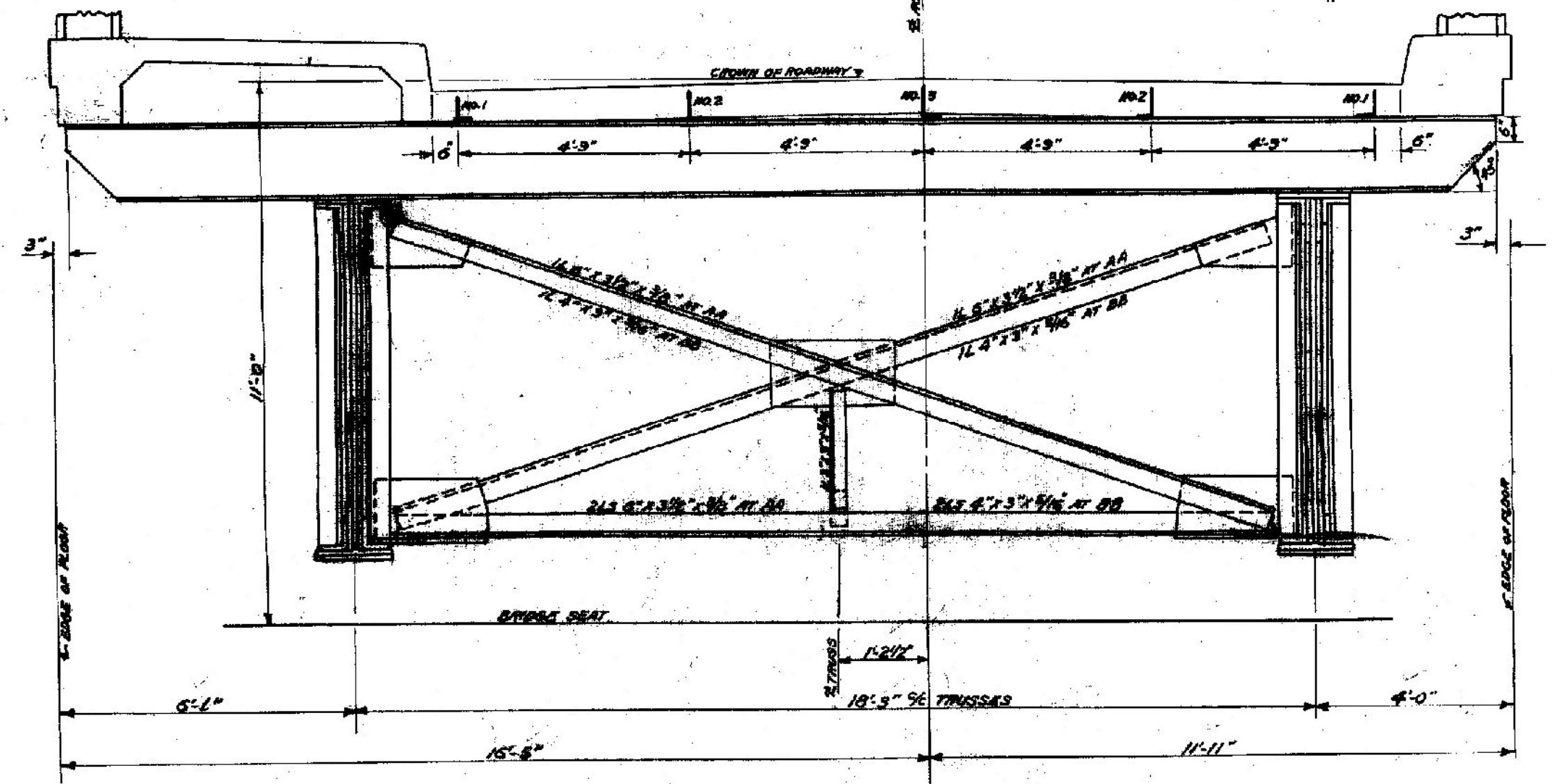
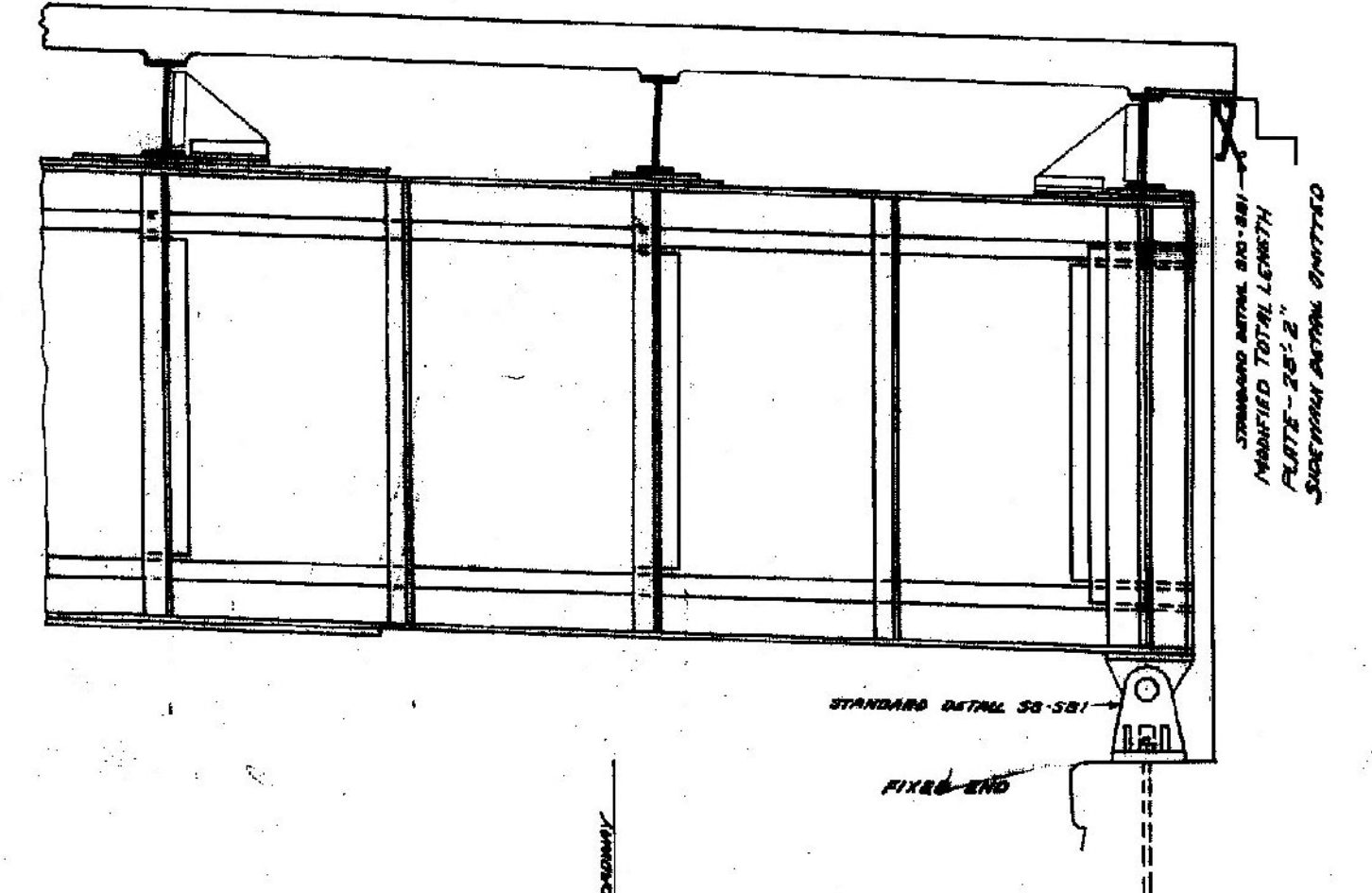
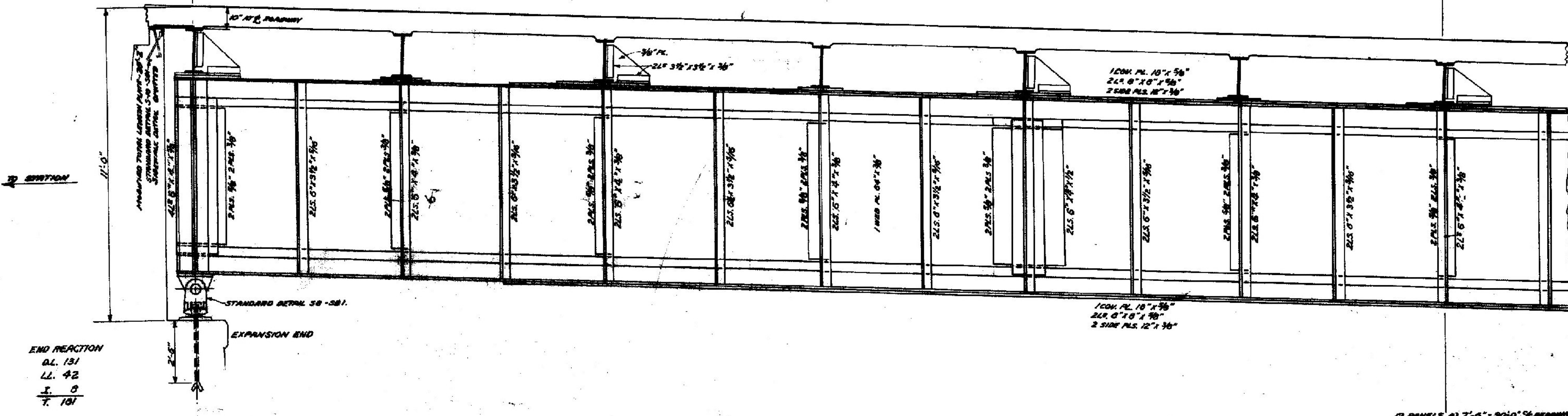


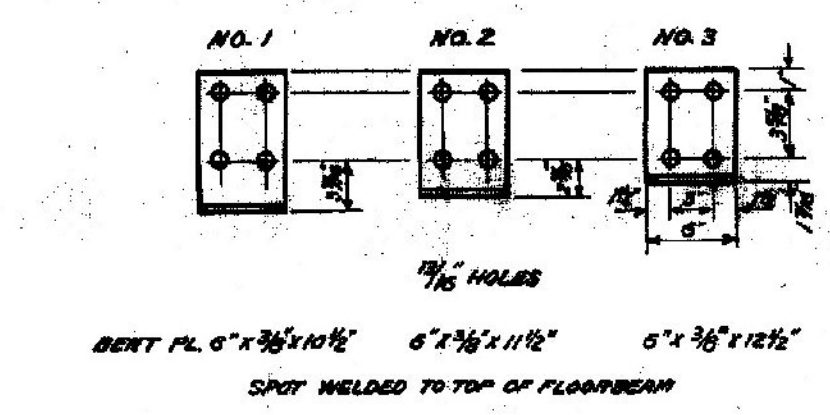
FED. ROAD DIST. NO. 1008 1927 YEAR NO. 15

FLOOR BEAMS		GIRDER	
D.L.	72 FT. LBS.	2940	FT. LBS.
L.L.	105	320	
I.	31	186	
T. 208		4054	
$\frac{1}{16}$	$\cdot 155 \cdot 2$	$\frac{1}{16}$	$\cdot 3040 \cdot 3$ NET
USE 10" C.B. @ 88" = 168.2		USE 1 INEB PL. @ 4" @ 36"	3350" GROSS
OR 10" S.S. @ 88" = 167.1		4 SIDE PLS. 12" x 1/2"	3400" NET
		4 L'S @ 10" x 1/2"	
		2 CON. PLS. 10" x 1/2"	

MOMENTS IN KIIPS



GIRDER DESIGNED FOR:  
 DEAD LOAD + 20% WINDING ALLOWANCE  
 LIVE LOAD TRAFFIC LOADS 118, A.A.S.H.O. SPECIFICATIONS 1926.  
 IMPACT 20% OF LIVE LOAD.  
 SPECIFICATIONS: STANDARD ROAD AND BRIDGE SPECIFICATIONS OF THE STATE OF VERMONT DEPARTMENT OF HIGHWAYS.  
 RIVETS: 7/8"  
 GUSSETS: 3/8"  
 CAMBER: 3/4" AFTER DEAD LOAD IS APPLIED.



**STEEL SUPERSTRUCTURE  
 JERICHO TOWN BRIDGE  
 JERICHO, VT.**

ESTIMATED WEIGHT STRUCTURAL STEEL 199,000

Surveyed by  
 Designed by A.B. BEHNER  
 Drawn by  
 Traced by LARSON  
 Checked by Bishop  
 Series F No. 908 Filed  
 Sheet 5 of 15 Sheets