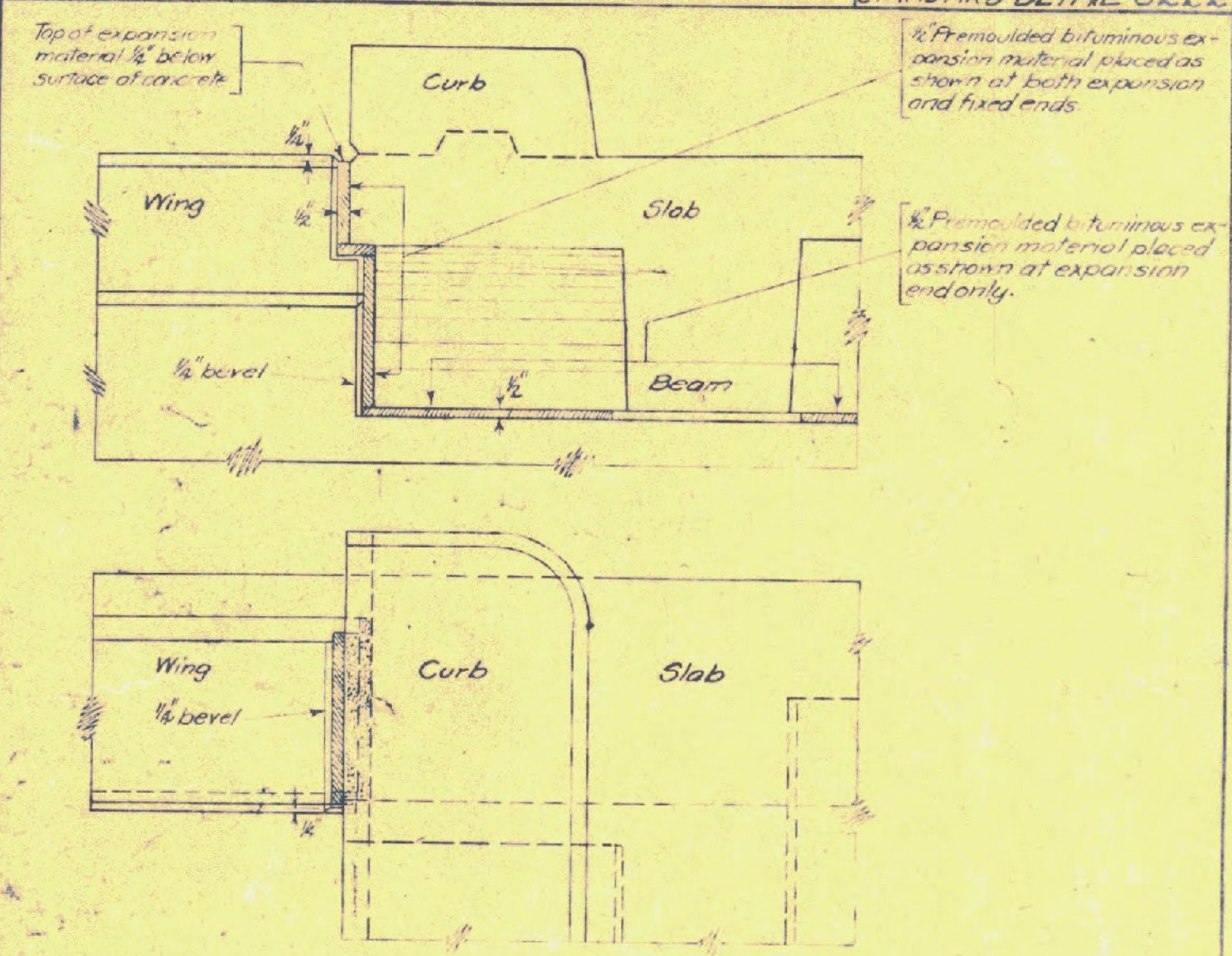
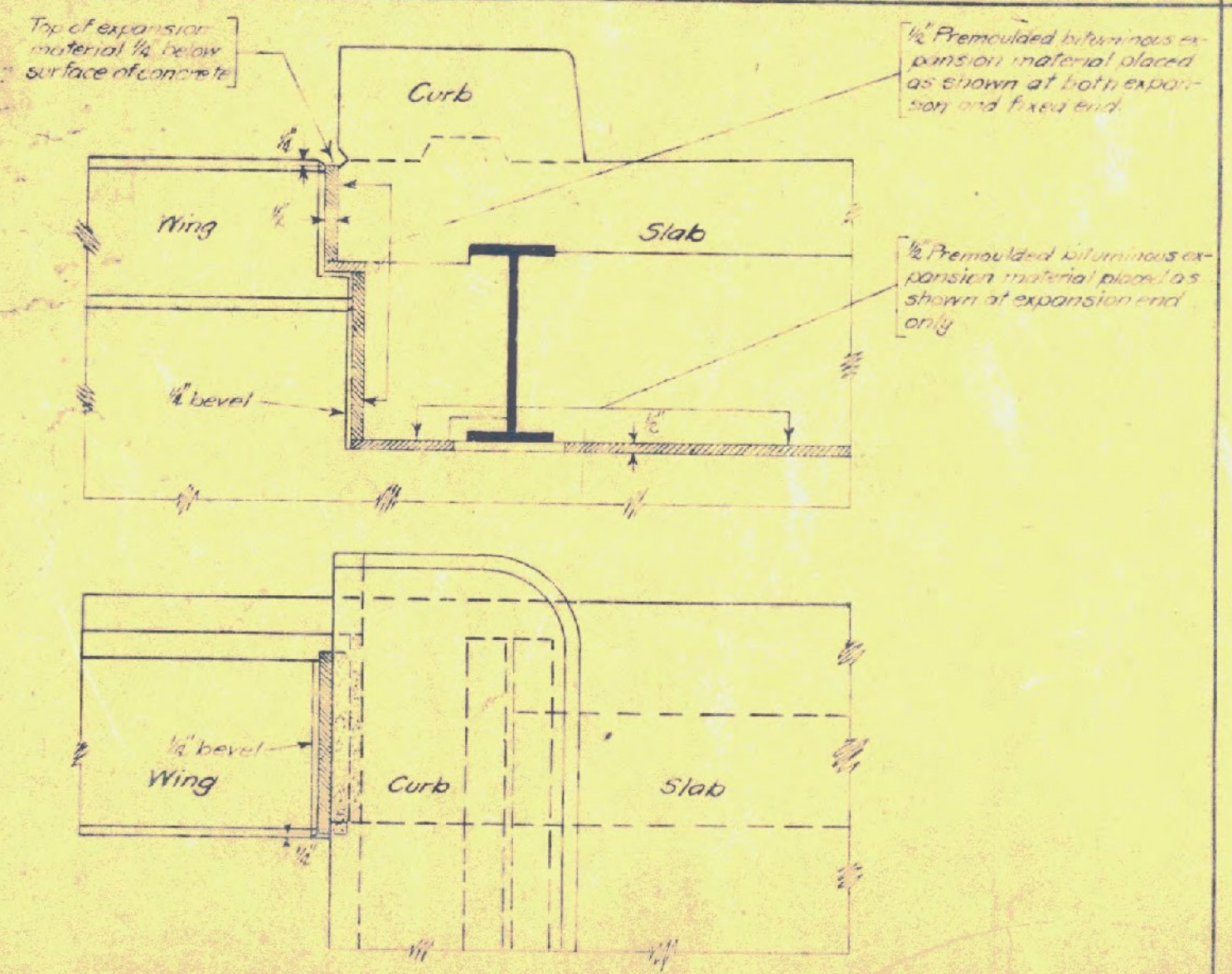


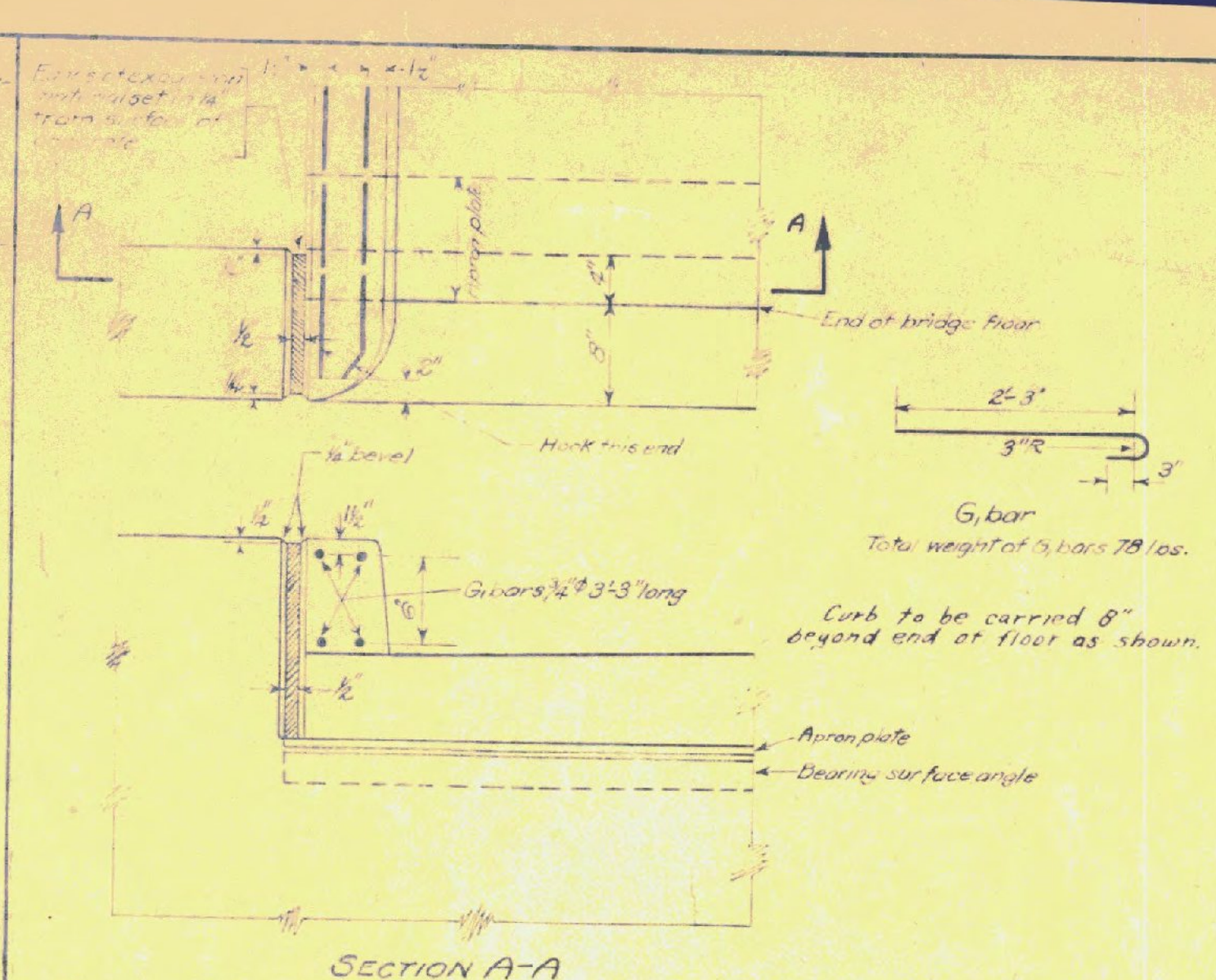
DETAIL OF EXPANSION MATERIAL FOR SLAB BRIDGES STANDARD DETAIL-S222



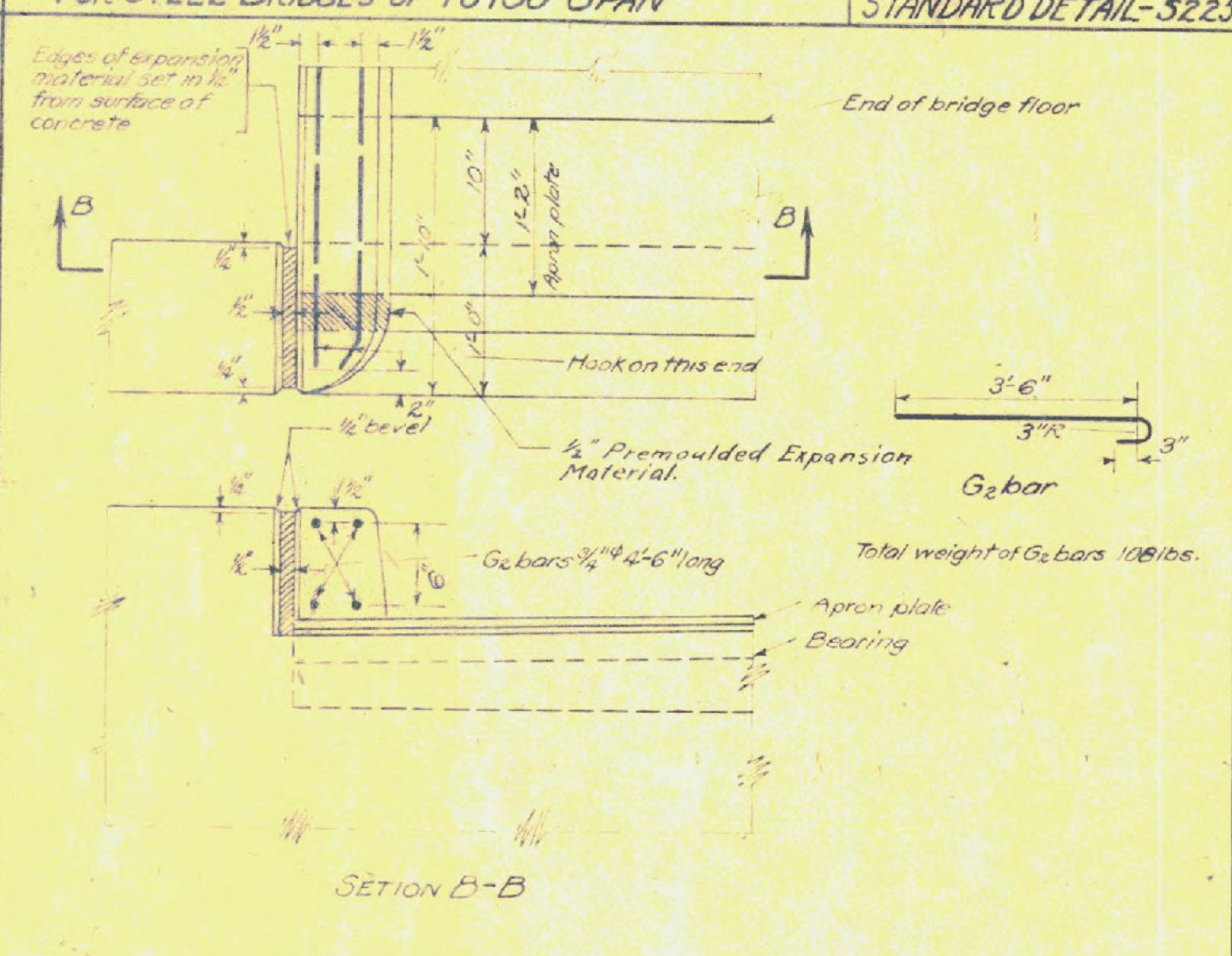
DETAIL OF EXPANSION MATERIAL FOR TEE BEAM BRIDGES STANDARD DETAIL-S223



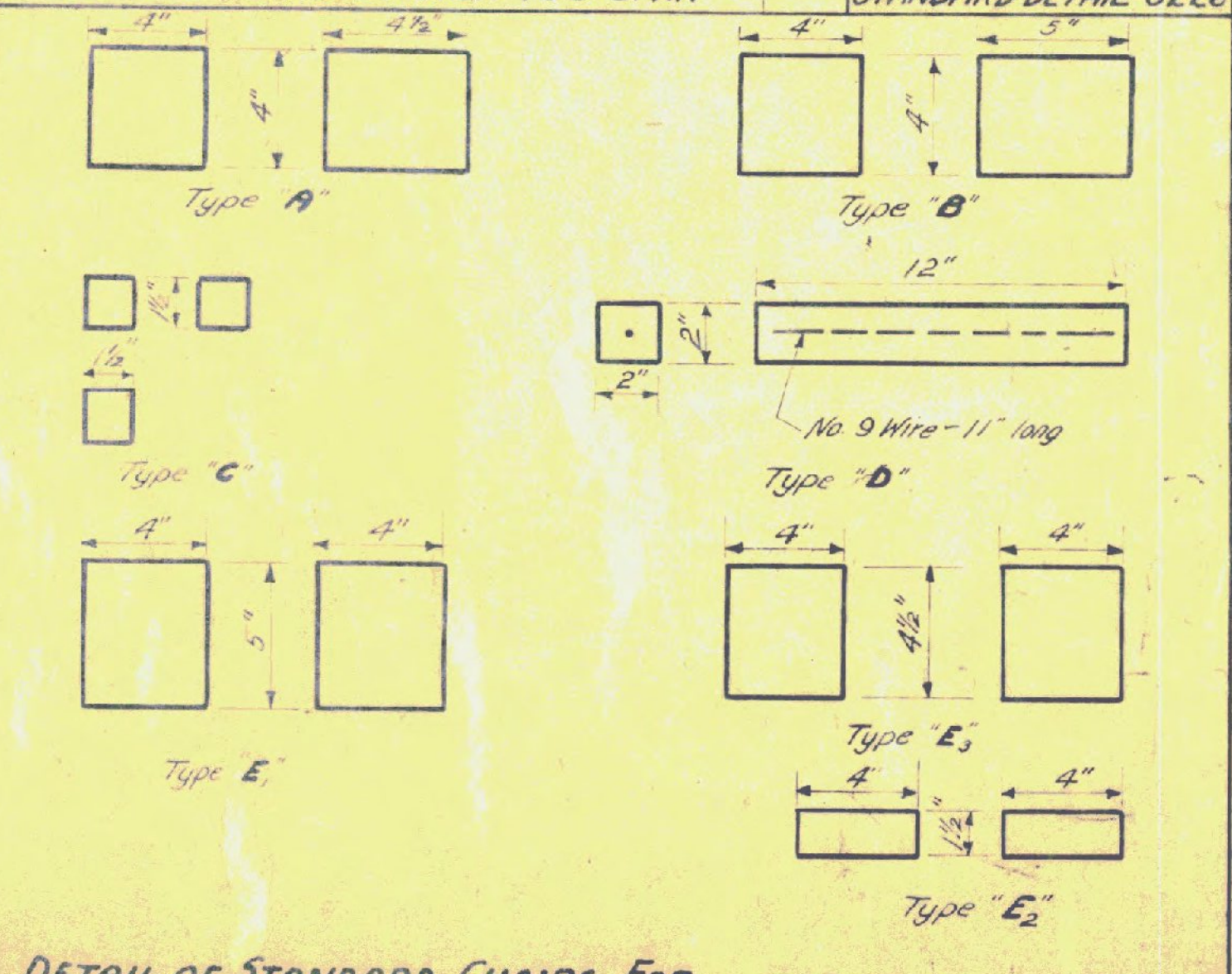
DETAIL OF EXPANSION MATERIAL FOR I BEAM BRIDGES STANDARD DETAIL-S224



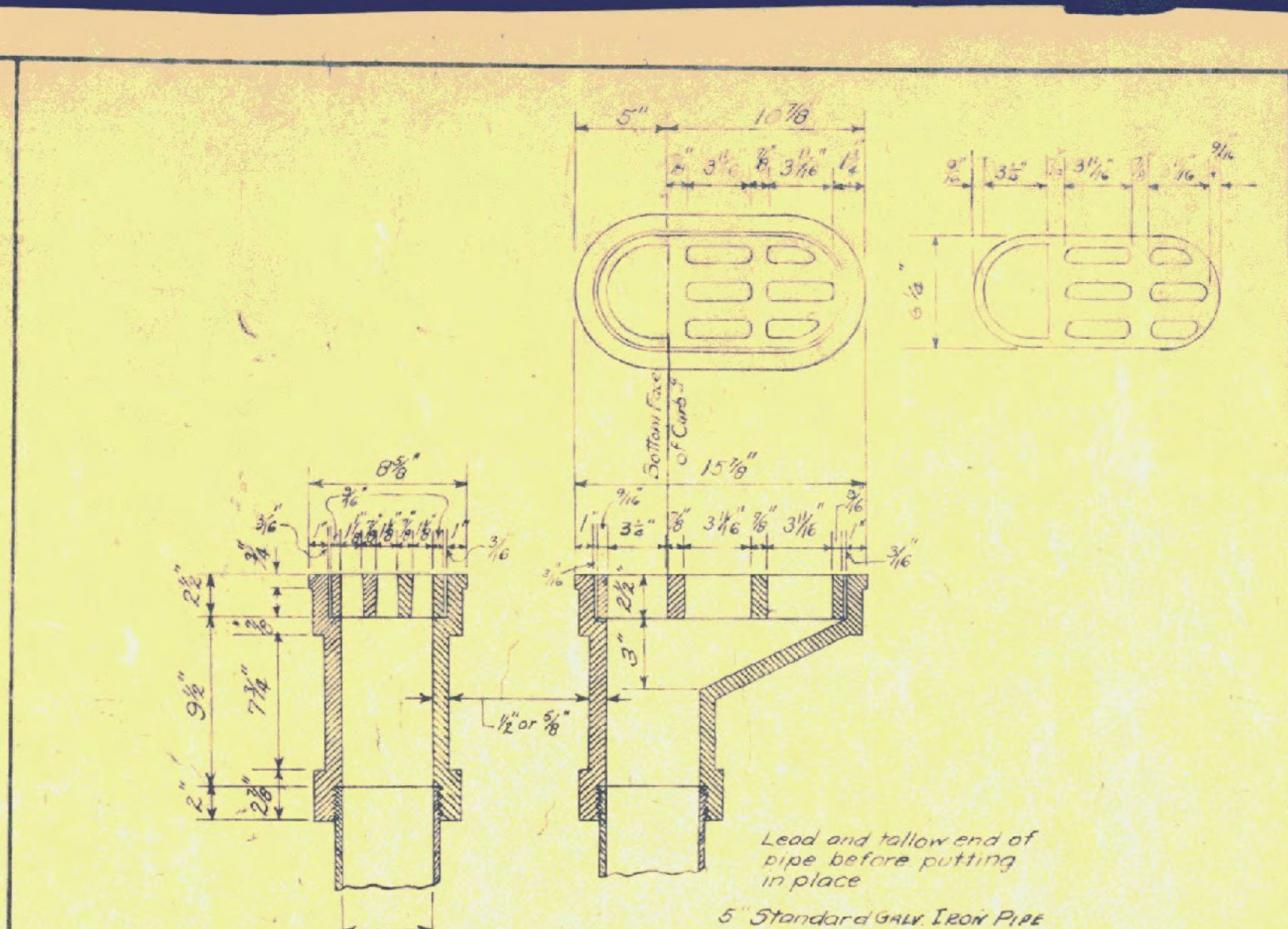
DETAIL OF CURB AND EXPANSION MATERIAL FOR STEEL BRIDGES UP TO 150' SPAN STANDARD DETAIL-S225



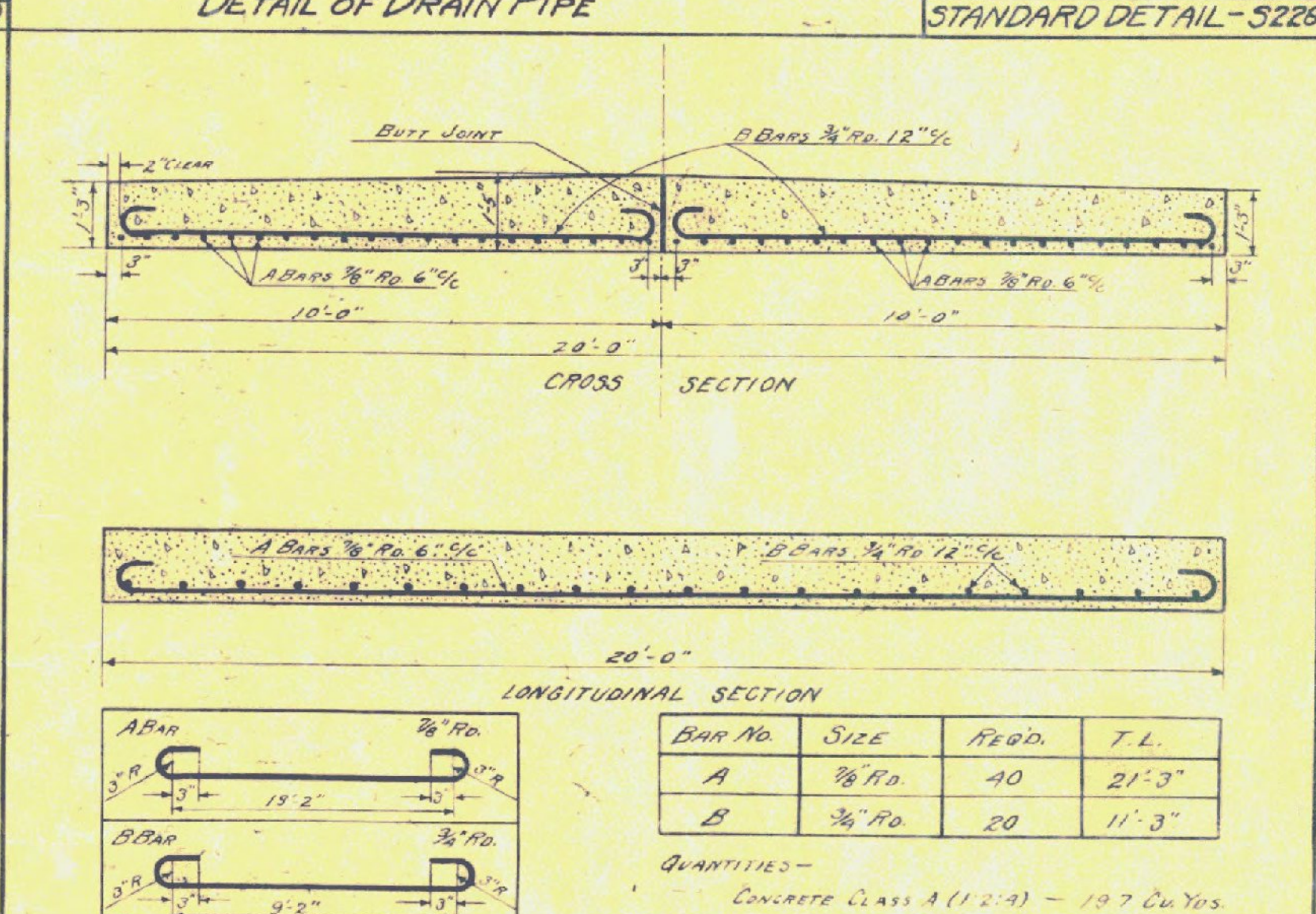
DETAIL OF CURB AND EXPANSION MATERIAL FOR STEEL BRIDGES OVER 150' SPAN STANDARD DETAIL-S226



DETAIL OF STANDARD CHAIRS FOR TEE BEAM, I BEAM AND STEEL BRIDGES STANDARD DETAIL-S227



DETAIL OF DRAIN PIPE STANDARD DETAIL-S228



DETAIL OF APPROACH SLAB STANDARD DETAIL-S229

**TYPICAL DETAILS**  
STATE OF VERMONT  
DEPARTMENT OF HIGHWAYS

CORRECT: *A. Bishop*  
BRIDGE ENGINEER

Corrected to March 1, 1929

Surveyed by  
Designed by  
Drawn by *C. P. ...*  
Traced by *C. P. ...*  
Checked by *M. W. ...*  
Series 5B No. 2A