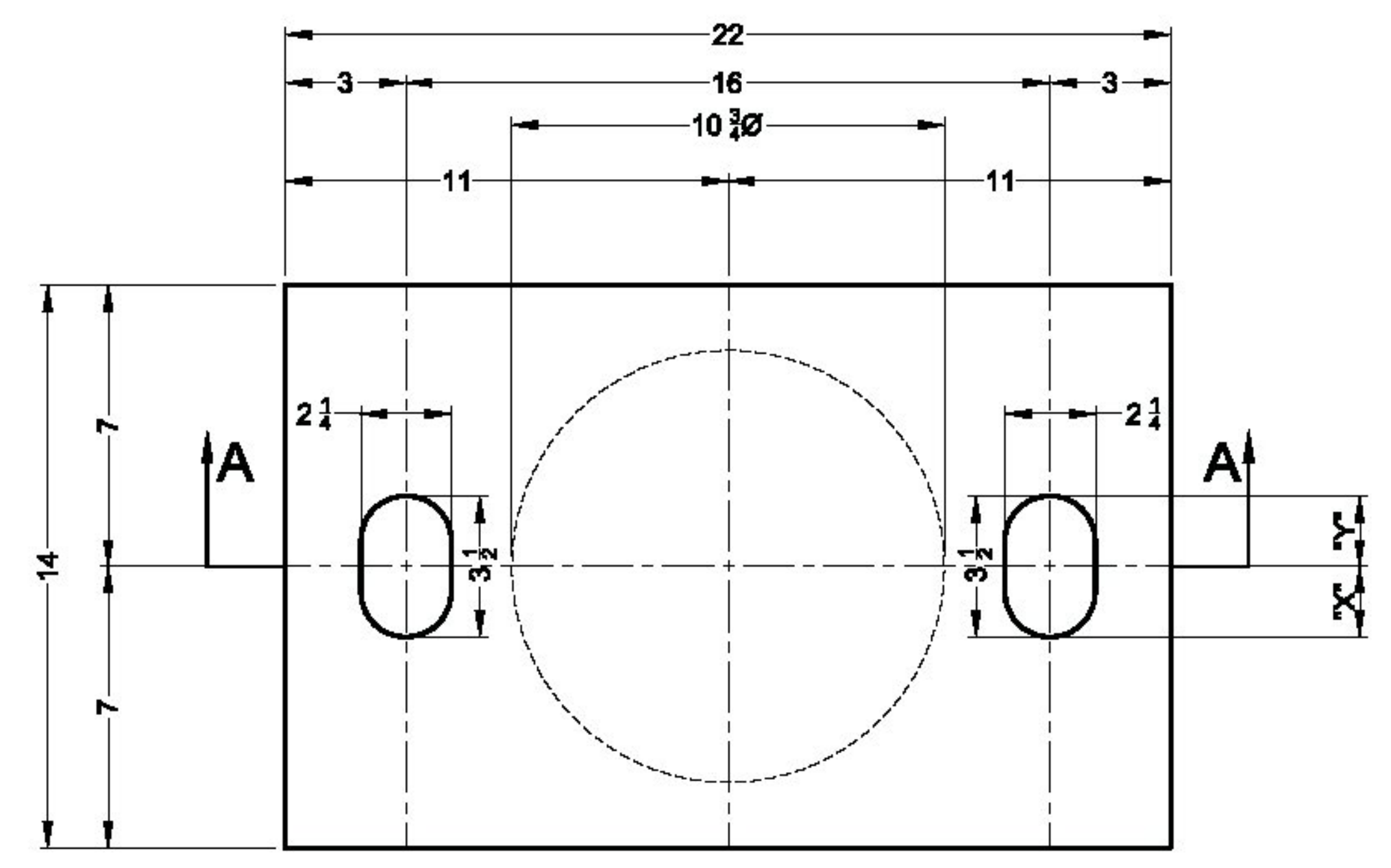
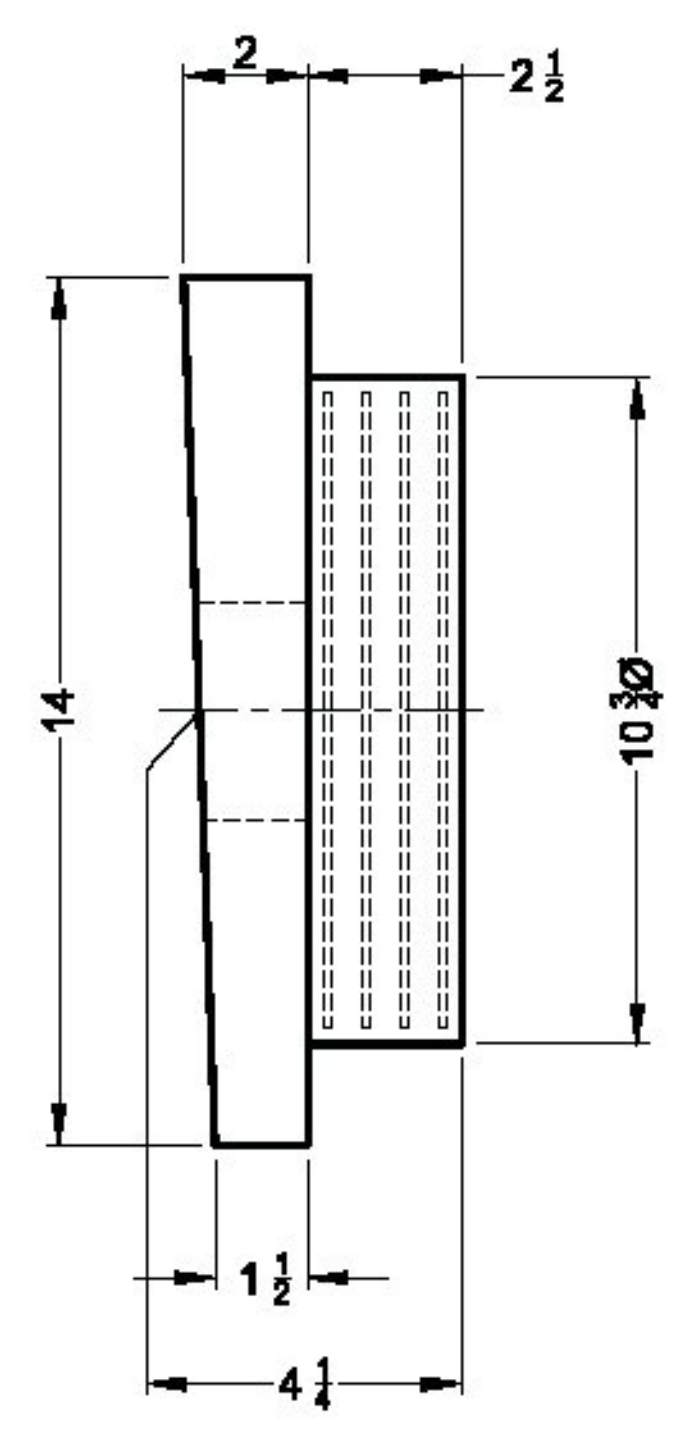


REVISIONS				
ZONE	REV	DESCRIPTION	REVISED BY	DATE

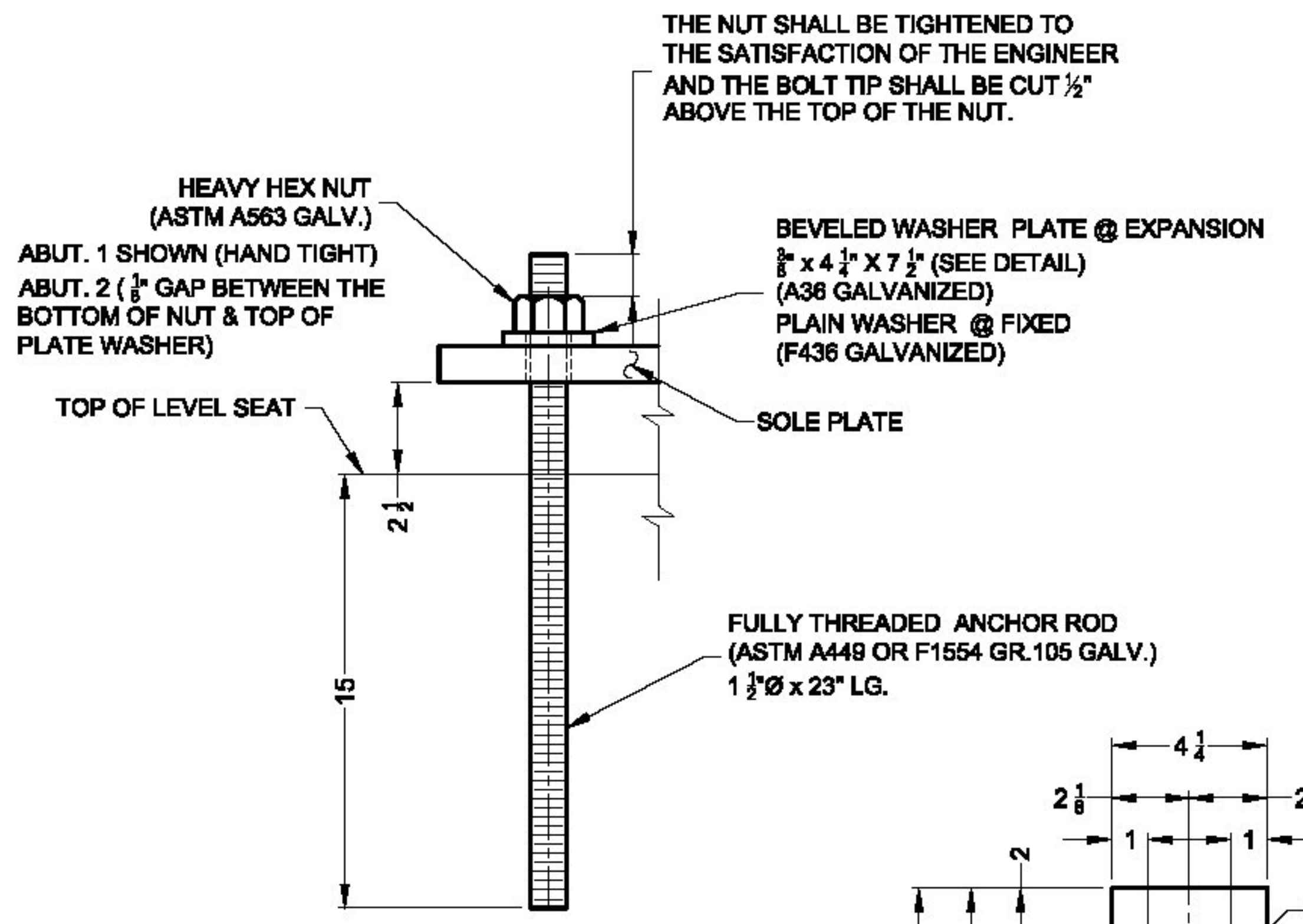


PLAN VIEW

QTY. REQ'D. = 2 ASSY.
ITEM NO. 531.17
@ ABUTMENT 2



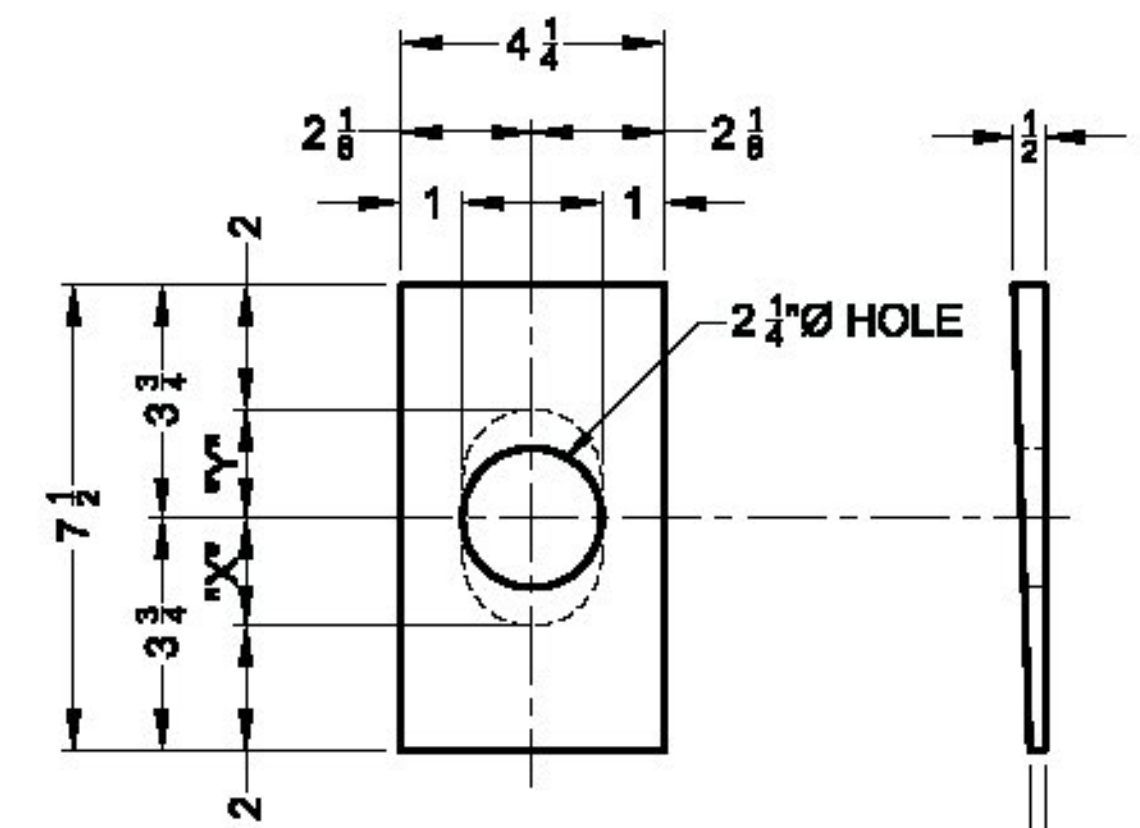
SIDE VIEW



ANCHOR BOLT DETAIL

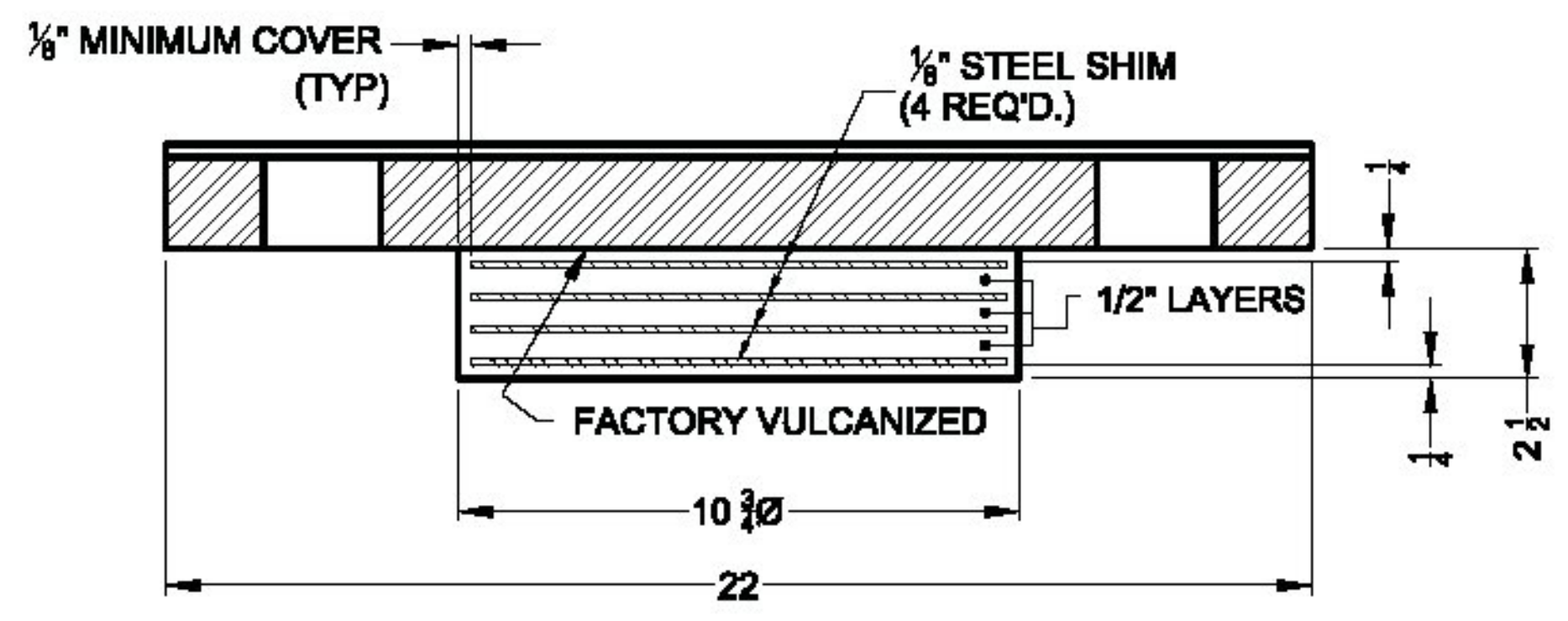
QTY. REQ'D. = 8

THE NUT SHALL BE TIGHTENED TO THE SATISFACTION OF THE ENGINEER AND THE BOLT TIP SHALL BE CUT 1/2" ABOVE THE TOP OF THE NUT.



BEVELED WASHER PLATE DETAIL

QTY. REQ'D. = 4



SECTION A-A

SETTING CHART (ABUT. 2)

TEMP.	"X" DIST.	"Y" DIST.
0°	1 5/8	1 7/8
15°	1 3/4	1 3/4
30°	1 7/8	1 5/8
45°	2	1 1/2
60°	2 1/8	1 3/8
75°	2 1/4	1 1/4
90°	2 3/8	1 1/8
105°	2 1/2	1

- NO EXCEPTION TAKEN
- REJECTED
- MAKE CORRECTIONS NOTED
- REVISE AND RESUBMIT
- SUBMIT SPECIFIED ITEM

CHECKING IS ONLY FOR GENERAL CONFORMANCE WITH THE DESIGN CONCEPT OF THE PROJECT AND GENERAL COMPLIANCE WITH THE INFORMATION GIVEN IN THE CONTRACT DOCUMENTS. ANY ACTION SHOWN IS SUBJECT TO THE REQUIREMENTS OF THE PLANS AND SPECIFICATIONS. CONTRACTOR IS RESPONSIBLE FOR DIMENSIONS WHICH SHALL BE CONFIRMED AND CORRELATED AT THE JOB SITE; FABRICATION PROCESSES AND TECHNIQUES OF CONSTRUCTION; COORDINATION OF HIS WORK WITH THAT OF ALL OTHER TRADES AND THE SATISFACTORY PERFORMANCE OF THE WORK.



DATE 8/5/2014 BY N. Bennett

BEARING DESIGN CRITERIA

TOTAL DL (Kips)	TOTAL LL + I (Kips)	HORIZONTAL (Kips)	TOTAL ROTATION (Rad)	ONE WAY MOVEMENT (IN)
25	32	4	.013	0.41"

SEE SHEET 1 OF 2 FOR NOTES

Inspection Block

Initial Dim. Check
Sign: _____ Date: _____

In Process Dim. Chk.
Sign: _____ Date: _____

100% Visual Weld Insp.
Sign: _____ Date: _____

Point Insp.(see form)
Sign: _____ Date: _____

Final Inspection
Sign: _____ Date: _____

**JERICO
STP FTBR (3)**

**EXPANSION TYPE ELASTOMERIC
CIRCULAR LAMINATED PAD DETAILS**

AMSCOT
STRUCTURAL PRODUCTS CORP.

SCALE: N.T.S.	APPRV'D: BF	DRAWN BY: E.J.G.
DATE: 8/4/14	REVISION: 0	
FOR: BLOW & COTE		
DWG NO: BC14A2R0		SHEET 2 OF 2