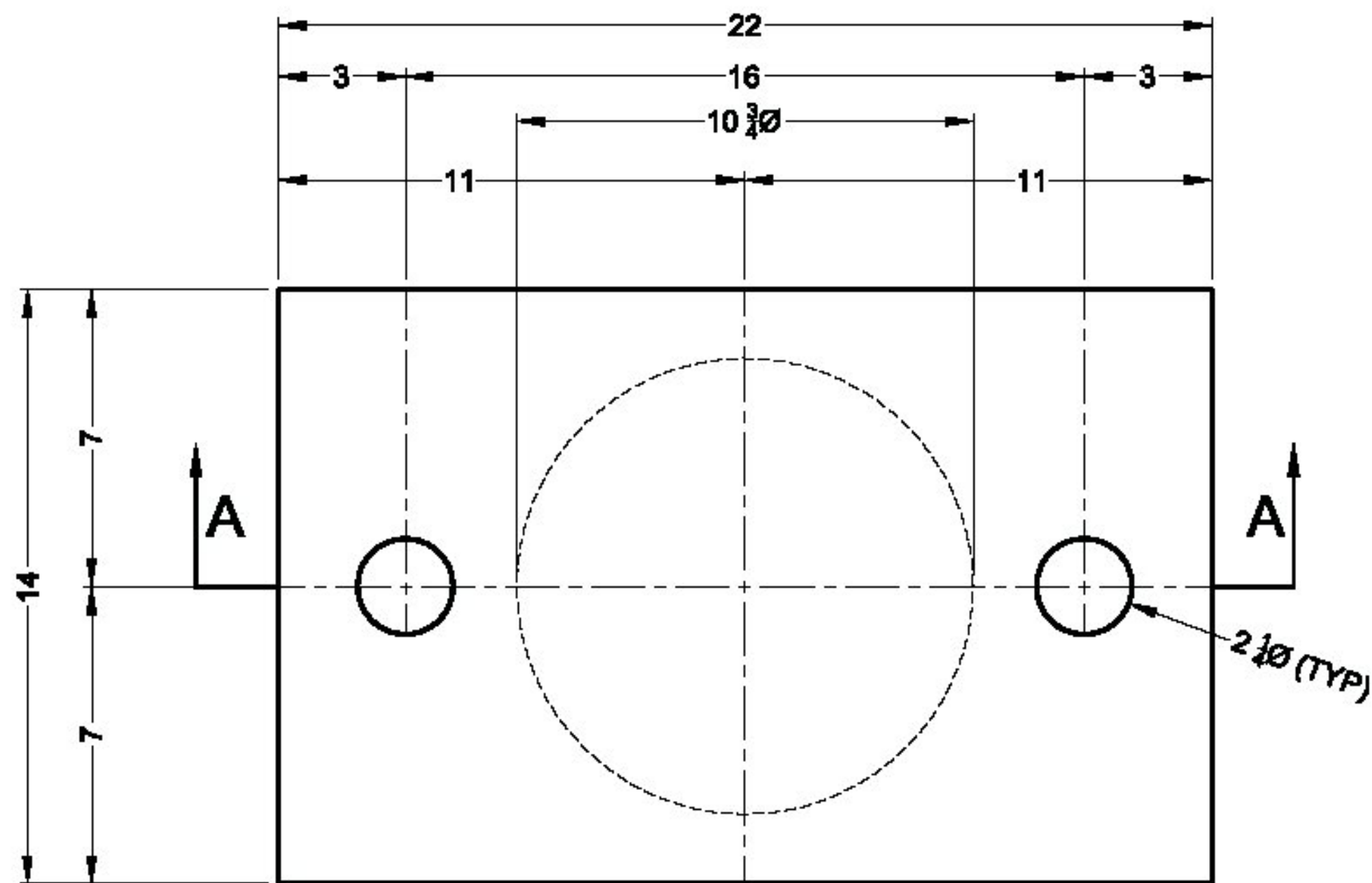


REVISIONS				
ZONE	REV	DESCRIPTION	REVISED BY	DATE

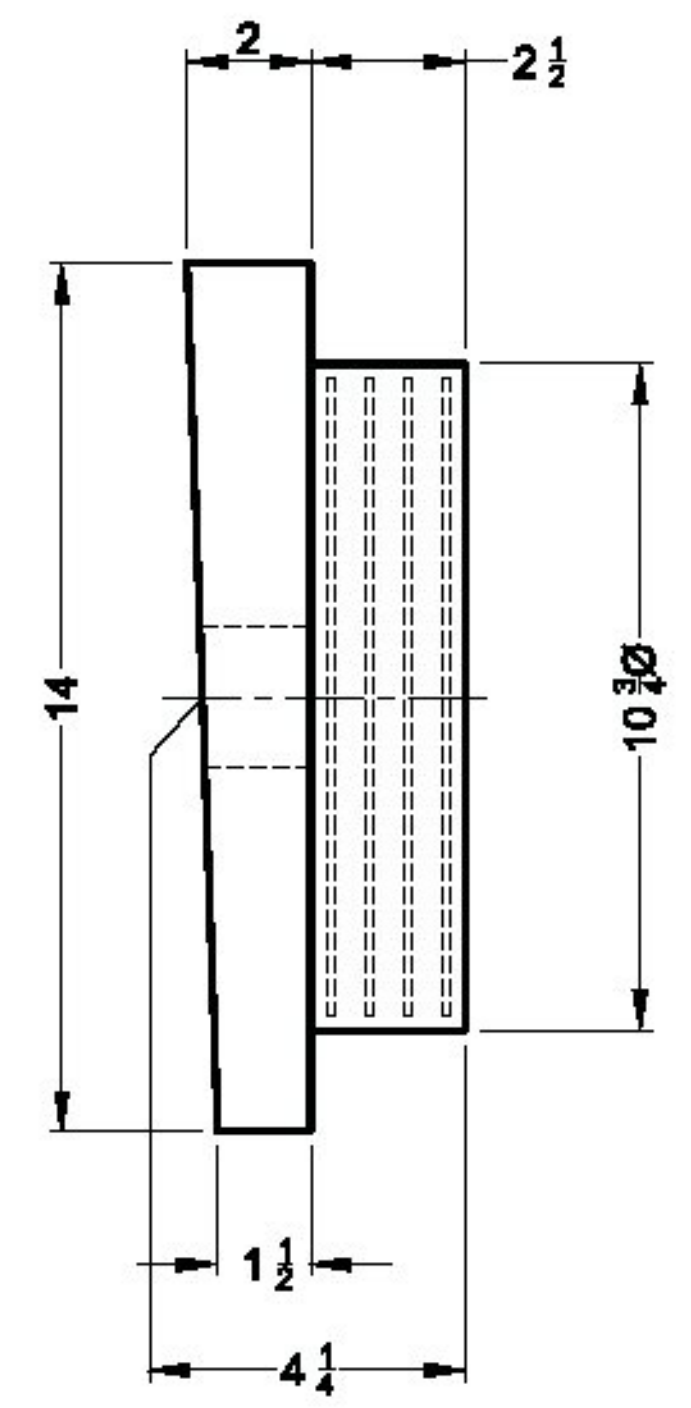


PLAN VIEW

QTY. REQ'D. = 2 ASSY.

ITEM NO. 531.17

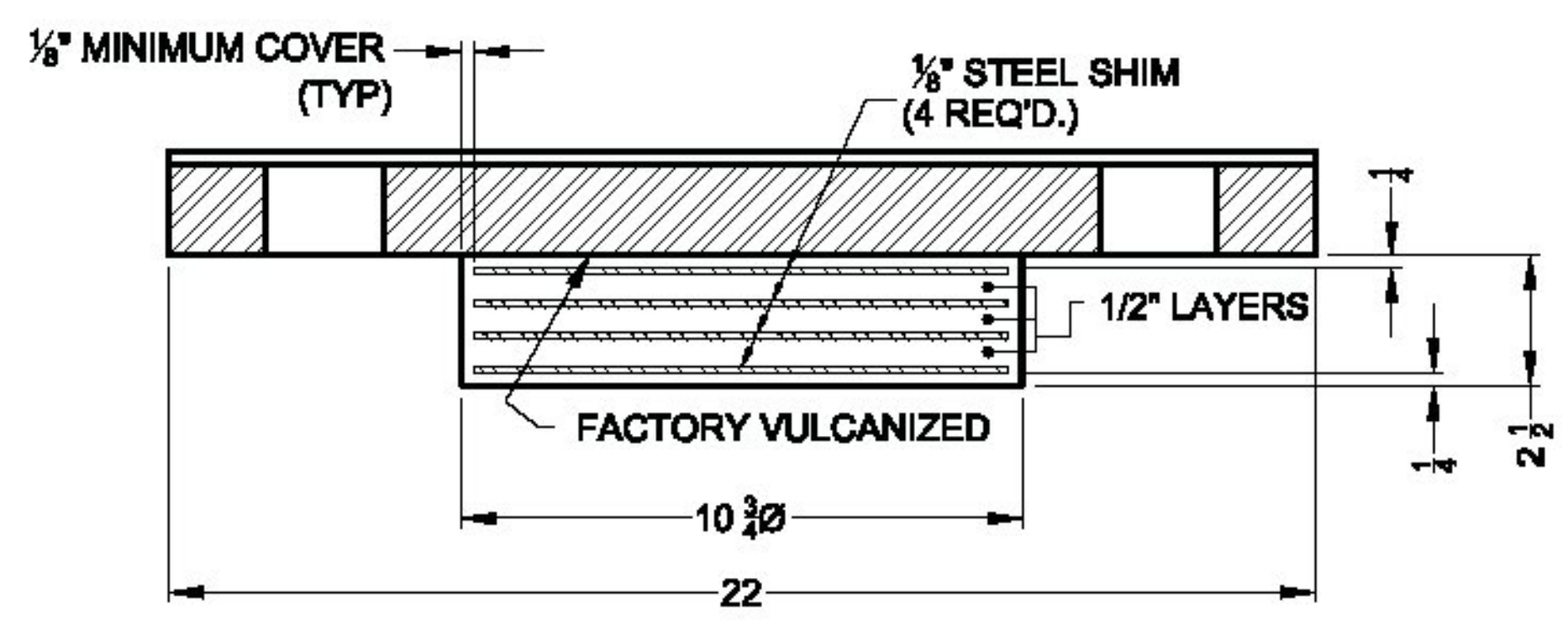
@ ABUTMENT 1



SIDE VIEW

NOTES:

1. MANUFACTURING FACILITY LOCATION:
AMSCOT STRUCTURAL PRODUCTS CORP.
241 E. BLACKWELL STREET
DOVER, N.J. 07801
CONTACT- PETER SOMOGYI
PH: 973-989-8800
FAX: 973-989-5851
2. ALL BEARING PADS TO BE MANUFACTURED IN ACCORDANCE WITH AASHTO SECTION 18. THE ELASTOMER SHALL BE GRADE 3 NATURAL RUBBER WITH A DUROMETER HARDNESS OF 60 ± 5. THE STEEL REINFORCING PLATES SHALL CONFORM TO ASTM A36.
3. THE BEARINGS ARE DESIGNED SO THE SUPERSTRUCTURE MAY BE ERECTED WHEN THE AMBIENT AIR TEMPERATURE IS WITHIN THE RANGE OF 40° F. TO 80° F.
4. ALL STEEL TO BE FACTORY VULCANIZED TO THE ELASTOMER DURING THE PRIMARY MOLDING PROCESS.
5. ALL EXTERNAL STEEL TO BE ASTM A709 GR. 36 GALVANIZED PER THE STANDARD SPECIFICATION.
6. ALL DIMENSIONS ARE IN INCHES , UNLESS OTHERWISE NOTED.
7. TOLERANCES: THICKNESS -0 +1/8
PLAN -0 +1/8
8. THE TEMPERATURE OF THE STEEL ADJACENT TO THE ELASTOMER SHALL NOT EXCEED 200° F. TEMPERATURE SHALL BE CONTROLLED BY THE USE OF TEMPERATURE INDICATING CRAYONS OR OTHER DEVICES APPROVED BY THE ENGINEERS.



SECTION A-A

NO EXCEPTION TAKEN MAKE CORRECTIONS NOTED
 REJECTED REVISE AND RESUBMIT
 SUBMIT SPECIFIED ITEM

CHECKING IS ONLY FOR GENERAL CONFORMANCE WITH THE DESIGN CONCEPT OF THE PROJECT AND GENERAL COMPLIANCE WITH THE INFORMATION GIVEN IN THE CONTRACT DOCUMENTS. ANY ACTION SHOWN IS SUBJECT TO THE REQUIREMENTS OF THE PLANS AND SPECIFICATIONS. CONTRACTOR IS RESPONSIBLE FOR DIMENSIONS WHICH SHALL BE CONFIRMED AND CORRELATED AT THE JOB SITE; FABRICATION PROCESSES AND TECHNIQUES OF CONSTRUCTION; COORDINATION OF HIS WORK WITH THAT OF ALL OTHER TRADES AND THE SATISFACTORY PERFORMANCE OF THE WORK.



DATE 8/5/2014 BY N. Bennett

BEARING DESIGN CRITERIA				
TOTAL DL (Kips)	TOTAL LL + I (Kips)	HORIZONTAL (Kips)	TOTAL ROTATION (Rad)	ONE WAY MOVEMENT (IN)
25	32	4	.013	0.41"

SEE SHEET 2 OF 2 FOR ANCHOR BOLT DETAILS

Inspection Block	
Initial Dim. Check	Sign: _____ Date: _____
In Process Dim. Chk.	Sign: _____ Date: _____
100% Visual Weld Insp.	Sign: _____ Date: _____
Paint Insp.(see form)	Sign: _____ Date: _____
Final Inspection	Sign: _____ Date: _____

JERICO STP FTBR (3)		
FIXED TYPE ELASTOMERIC CIRCULAR LAMINATED PAD DETAILS		
AMSCOT STRUCTURAL PRODUCTS CORP.		
SCALE: N.T.S.	APPRV'D: BF	DRAWN BY: E.J.G.
DATE: 8/4/14	REVISION: 0	
FOR: BLOW & COTE		
DWG NO: BC14A1R0		SHEET 1 OF 2