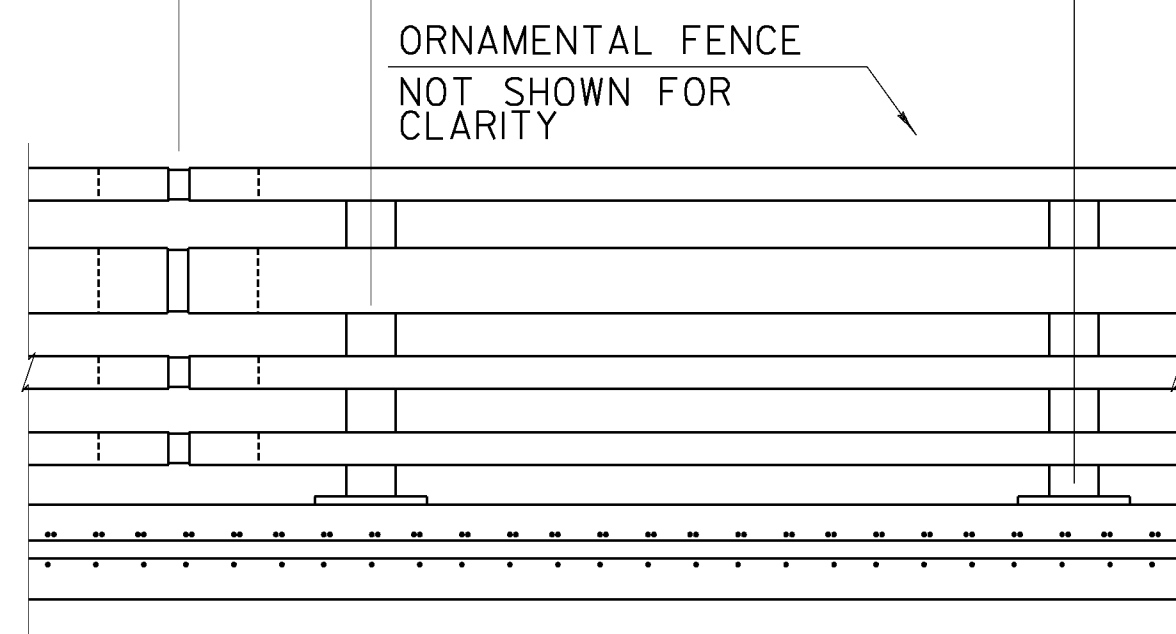


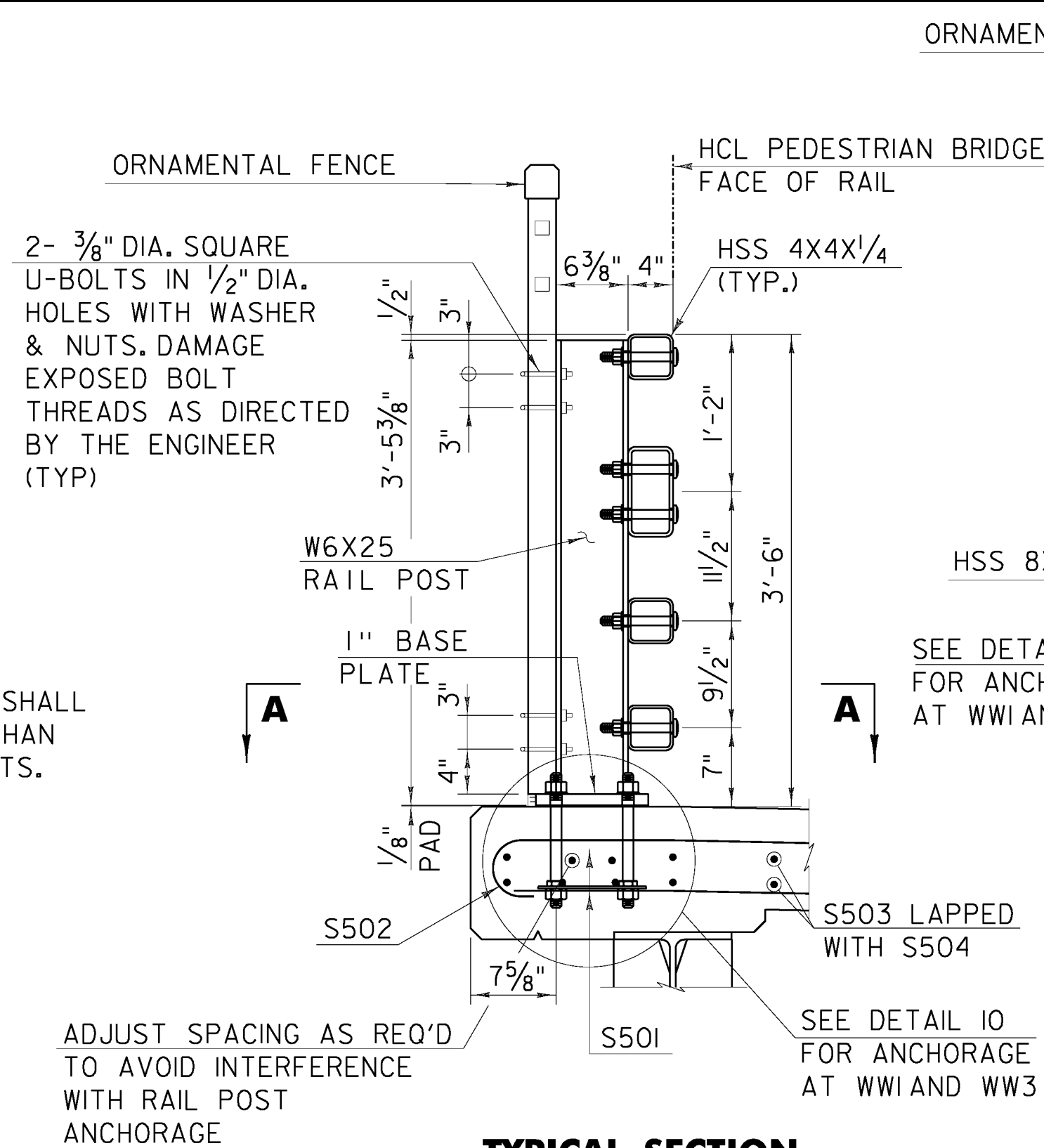
CL RAIL TUBE 2'-0" +/- VARIES (5'-0" MIN., 7'-0" MAX.)
 SPLICE OR RAIL EXP. JOINT (SEE SHT. 26 FOR RAIL POST ANCHORAGE LAYOUT)



BRIDGE RAILING ELEVATION

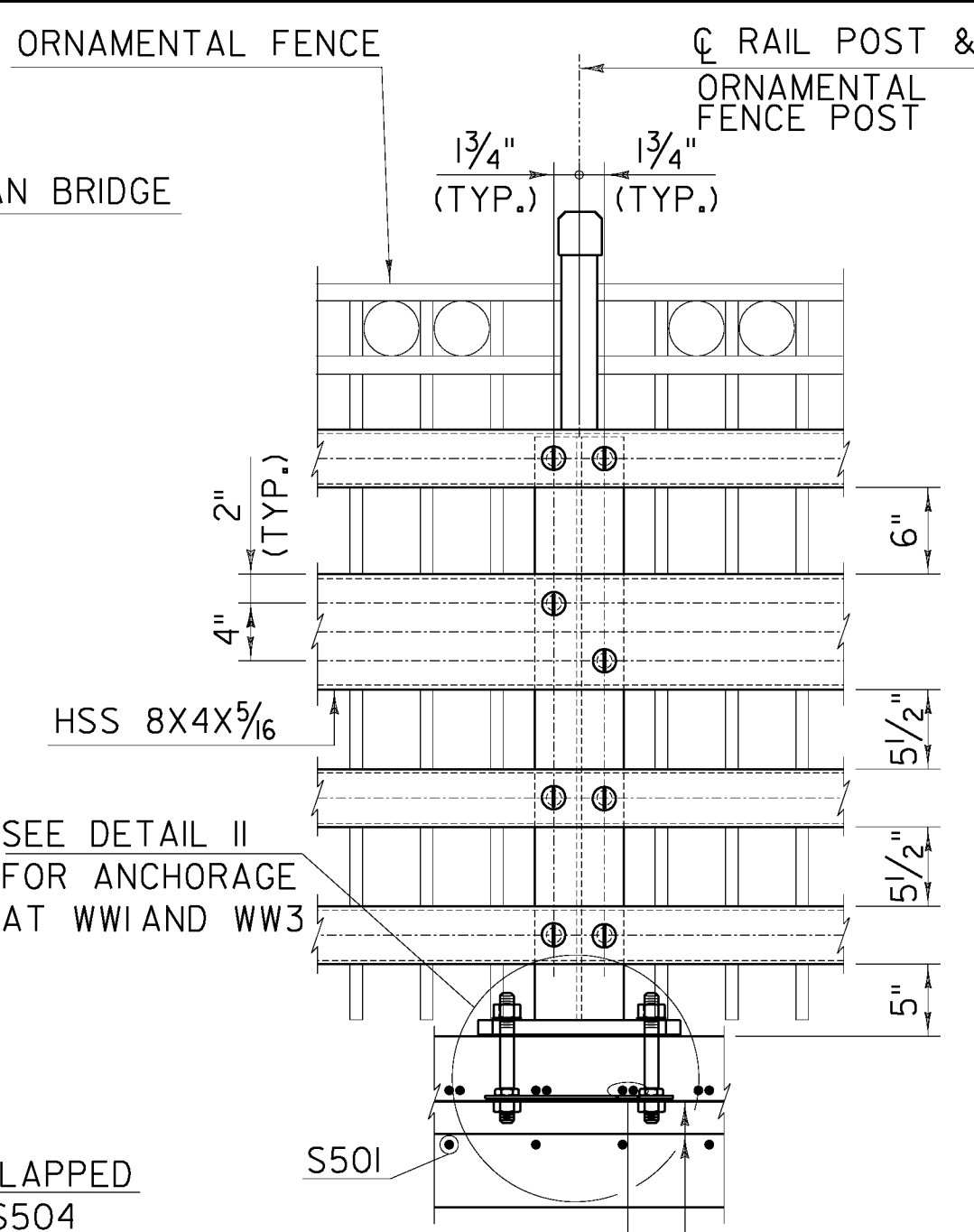
SCALE: 1/2" = 1'-0"

NOTE: HOLES IN RAILS SHALL BE 1/8" LARGER THAN CONNECTION BOLTS.



TYPICAL SECTION

SCALE: 1" = 1'-0"

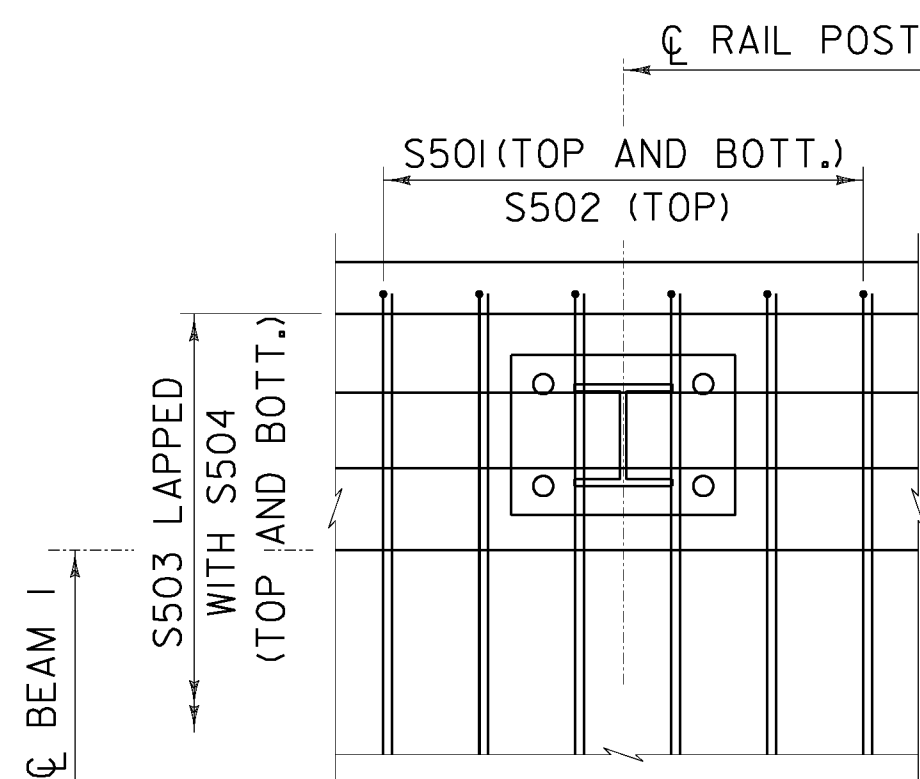


ELEVATION

SCALE: 1" = 1'-0"

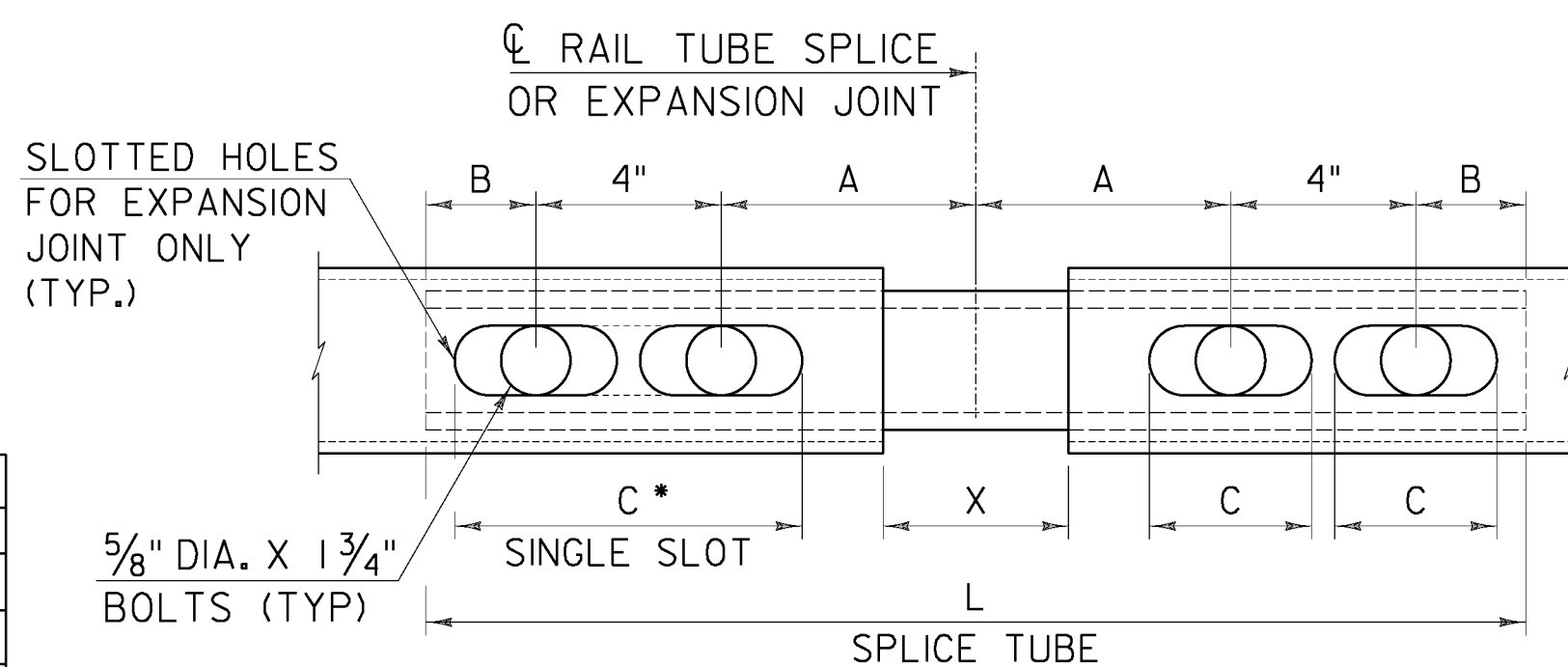
NOTES:

1. ALL WORK AND MATERIALS SHALL CONFORM TO STANDARD SPECIFICATION SECTION 525.
2. ALL EXPOSED CUT OR SHEARED EDGES SHALL BE ROUNDED TO A 1/16" RADIUS AND BE FREE OF BURRS.
3. RAIL POSTS SHALL BE SET NORMAL TO GRADE.
4. SECTIONS OF RAIL TUBE SHALL BE ATTACHED TO A MINIMUM OF TWO (2) RAIL POSTS AND PREFERABLY TO AT LEAST FOUR (4) POSTS.
5. RAIL TUBE EXPANSION JOINTS SHALL BE PROVIDED IN ANY RAIL BAY SPANNING A SUPERSTRUCTURE EXPANSION JOINT. EXPANSION JOINT WIDTH SHALL BE "X" AT 45° F AND WILL BE ADJUSTED IN THE FIELD BY THE ENGINEER FOR OTHER TEMPERATURES.
6. RAIL POSTS ANCHORING NUTS SHALL BE TIGHTENED TO A SNUG FIT AND GIVEN AN ADDITIONAL ONE-EIGHTH TURN.
7. RAIL TUBES SHALL BE ATTACHED USING 3/4" FULL DIAMETER BODY ROUND HEAD BOLTS INSERTED THROUGH THE FACE OF THE TUBE. HOLES IN POSTS SHALL BE 1/16" LARGER THAN THE BOLT SIZE.
8. HOLES IN RAILS FOR RAIL TUBE ATTACHMENT MAY BE FIELD-DRILLED. HOLES SHALL BE COATED WITH AN APPROVED ZINC-RICH PAINT PRIOR TO ERECTION.
9. ANY BENDING OF RAIL SHALL BE BY SHOP PROCEDURE ONLY.
10. THE FABRICATOR SHALL SUBMIT FABRICATION DRAWINGS INCLUDING WELDING PROCEDURES TO THE STRUCTURES ENGINEER FOR APPROVAL. ALL WELDING SHALL CONFORM WITH SUBSECTION 506.10.
11. FOR MORE INFORMATION AND REQUIREMENTS REGARDING ORNAMENTAL FENCE, SEE THE SPECIAL PROVISIONS.



REINFORCING PLAN AT RAIL POST ANCHORAGE

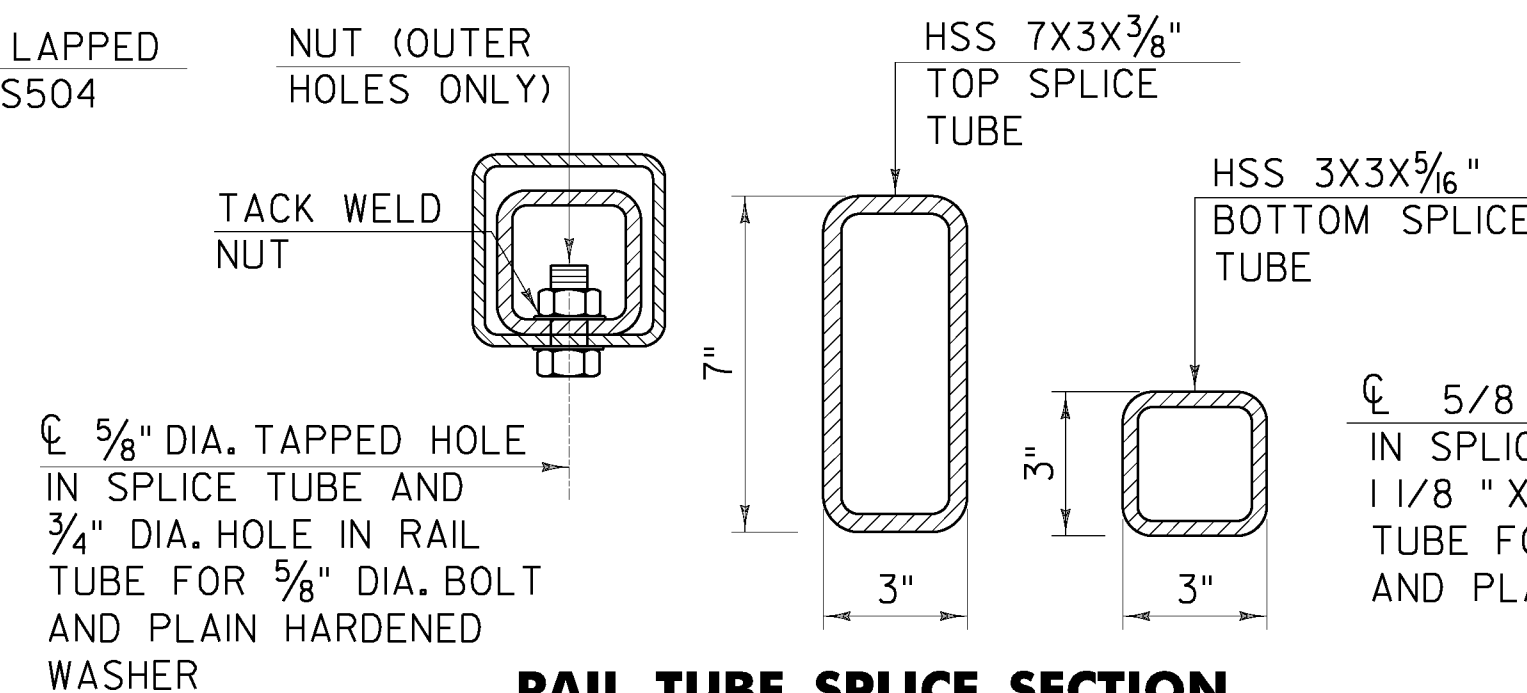
SCALE: 1" = 1'-0"



RAIL TUBE SPLICE AND RAIL EXPANSION JOINT DETAIL

(BOTTOM VIEW)

SCALE: 3" = 1'-0"



RAIL TUBE SPLICE SECTION

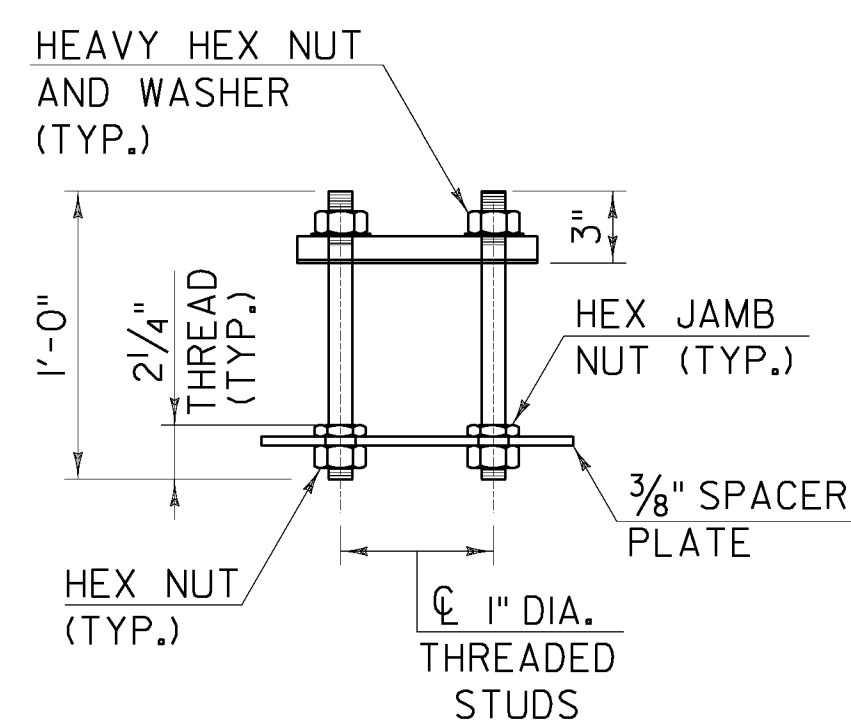
SCALE: 3" = 1'-0"

EXPANSION JOINT SECTION

FOR DETAILS NOT SHOWN, SEE "RAIL TUBE SPLICE SECTION," SCALE: 3" = 1'-0"

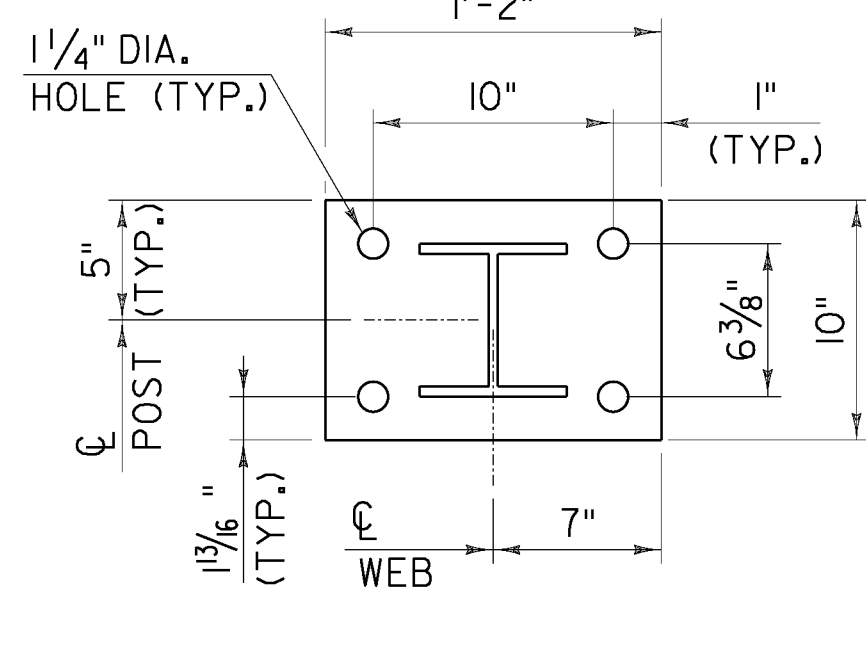
SPLICE TABLE					
T	A	B	C	L	X
N/A	4"	2"	--	20"	3/4"
EXPANSION JOINT TABLE					
≤ 4"	4"	2"	2 1/2"	20"	2 1/2"
> 4" ≤ 6 1/2"	5 1/2"	2 3/8"	3 1/2"	23 3/4"	4"
> 6 1/2" ≤ 9"	6 1/2"	3 3/8"	9"*	27 3/4"	5"
> 9" ≤ 13"	8 1/2"	4 3/8"	11"*	33 3/4"	7"

T = TOTAL MOVEMENT BETWEEN BRIDGE EXP. JOINTS (SEE NOTE 5).
 * = SINGLE SLOT



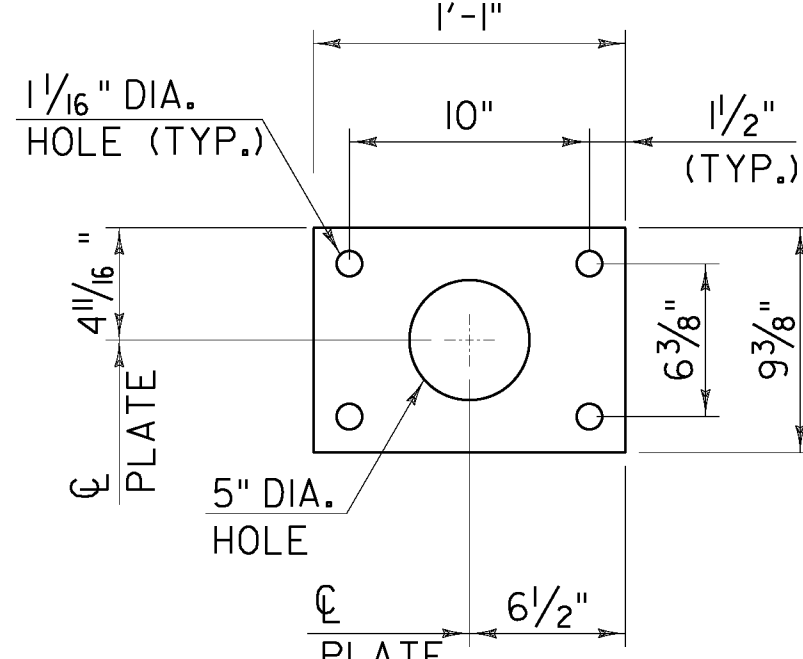
RAIL POST ANCHORAGE

SCALE: 1/2" = 1'-0"



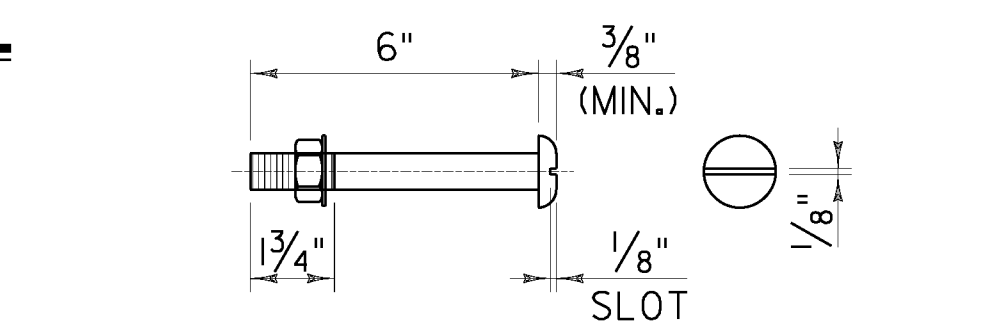
POST AND BASE PLATE

SCALE: 1/2" = 1'-0"



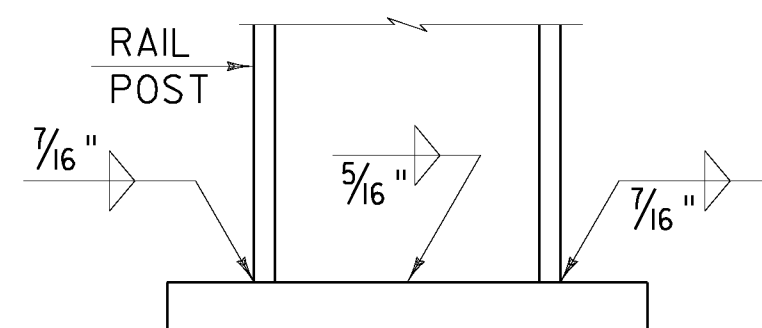
SPACER PLATE

SCALE: 1/2" = 1'-0"



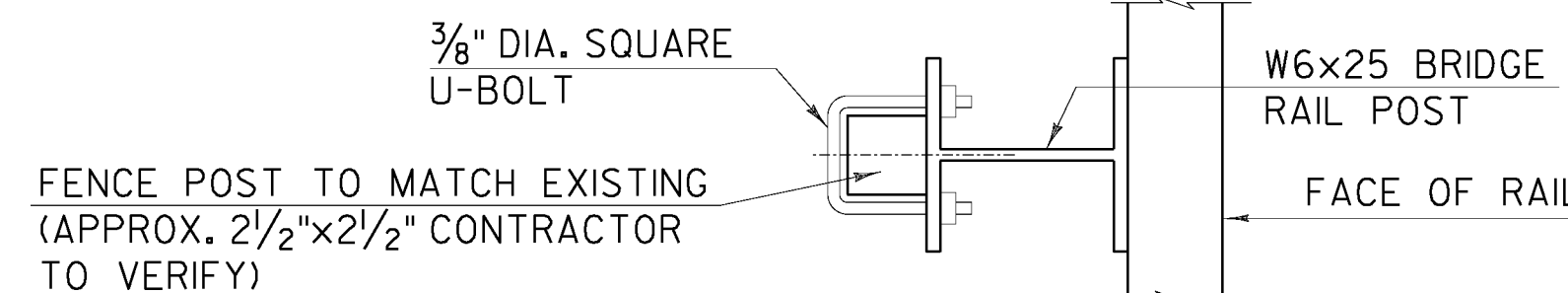
3/4" DIA. ROUND HEAD BOLT

(WITH WASHER AND PREVAILING TORQUE TYPE LOCK NUT) (SEE NOTE 7) ONLY FULL DIAMETER BODY BOLTS WILL BE ALLOWED.

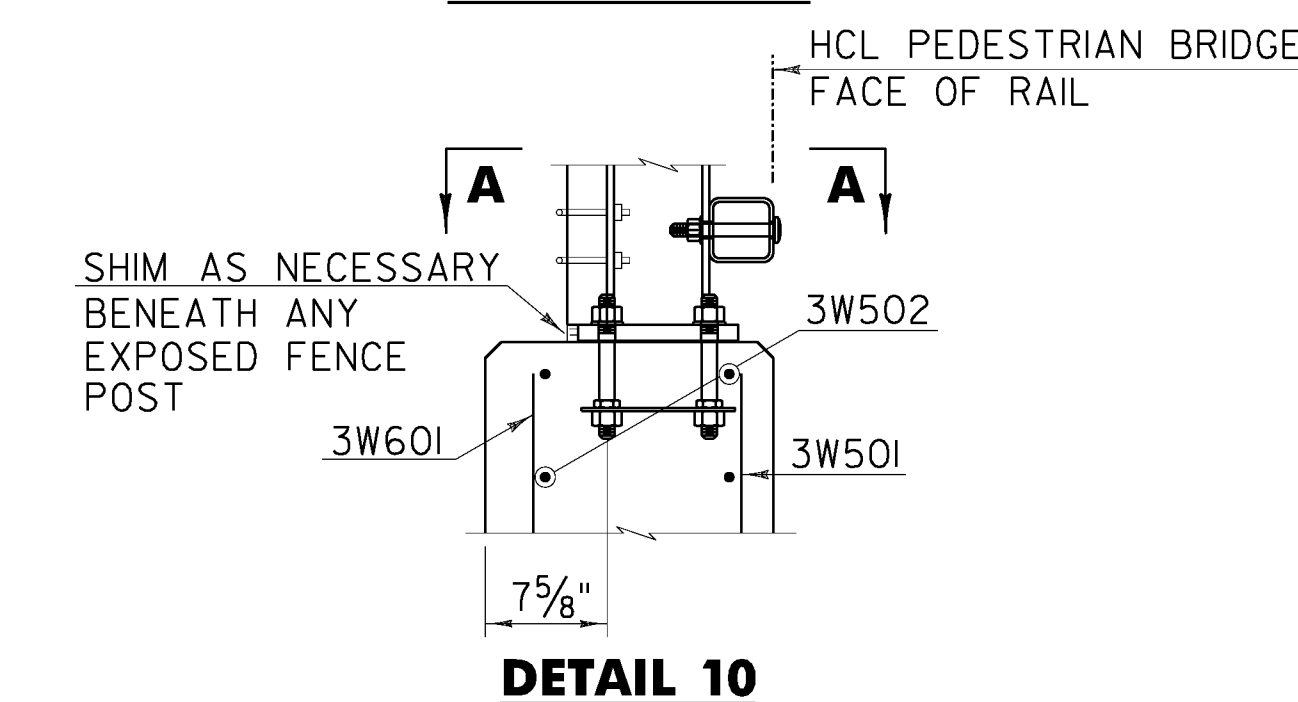


BASE WELD DETAIL

SCALE: 3" = 1'-0"

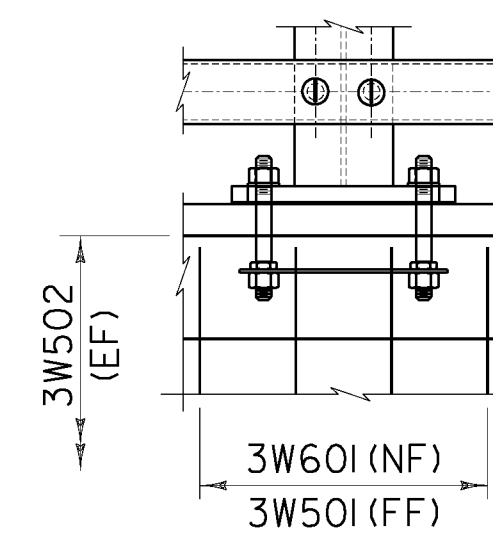


SECTION A-A



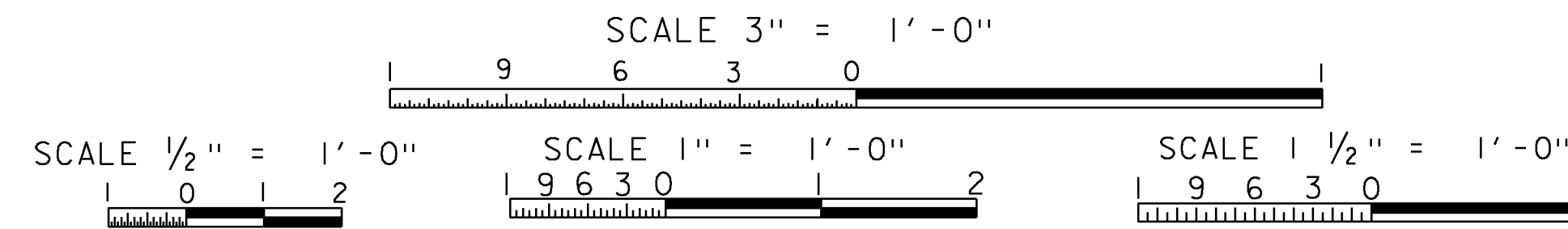
DETAIL 10

(WW 3 SHOWN, WW4 SIMILAR) SCALE: 1" = 1'-0"



DETAIL 11

(WW 3 SHOWN, WW4 SIMILAR) SCALE: 1" = 1'-0"



BRIDGE RAILING DETAILS

PROJECT NAME: JERICHO
 PROJECT NUMBER: STP FTBR (3)

PROJECT LEADER: M.D.S.
 DESIGNED BY: D.M.D.

PLOT DATE: 5/2/2014
 DRAWN BY: D.M.D.
 CHECKED BY: P.M.P.
 SHEET 40 OF 62



FILE NAME: V:\Projects\ANY\K2A2113\CADD\SET\N\28F004_Contract Documents & Current CADD Files\Consult\entia\08F002\br.dgma011.dgn DATE/TIME: 5/2/2014 USER: 4161