



REMOVAL OF EXISTING DRY MASONRY WALL INCLUDED UNDER ITEM 204.25 STRUCTURE EXCAVATION (TYP.)

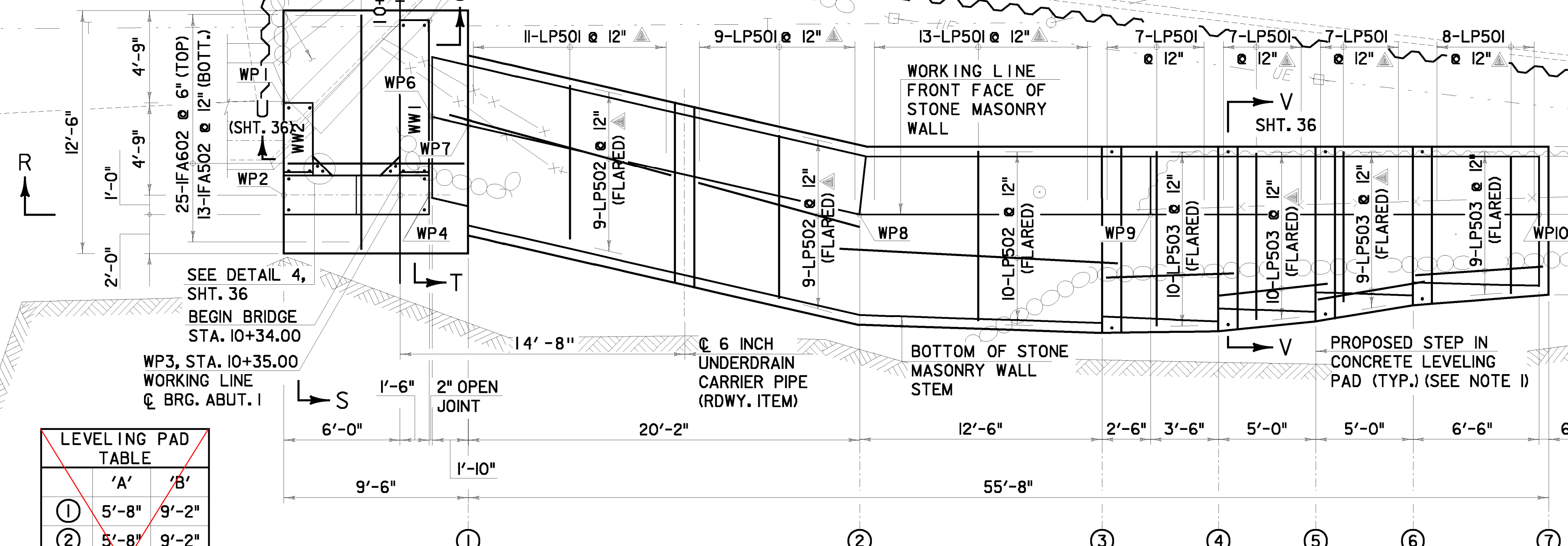
EXCAVATION SUPPORT REQUIRED TO PROTECT RED MILL DRIVE (INCLUDED UNDER ITEM 204.25)

ABUTMENT 1			DRY MASONRY WALL		
WP	NORTHING	EASTING	WP	NORTHING	EASTING
WP1	730921.97	1510096.43	WP6	730929.67	1510096.49
WP2	730922.38	1510101.16	WP7	730931.53	1510096.74
WP3	730928.36	1510100.64	WP8	730952.02	1510099.57
WP4	730929.86	1510100.51	WP9	730966.97	1510098.26
WP5	730929.07	1510091.54	WP10	730986.89	1510096.51

NOTES:

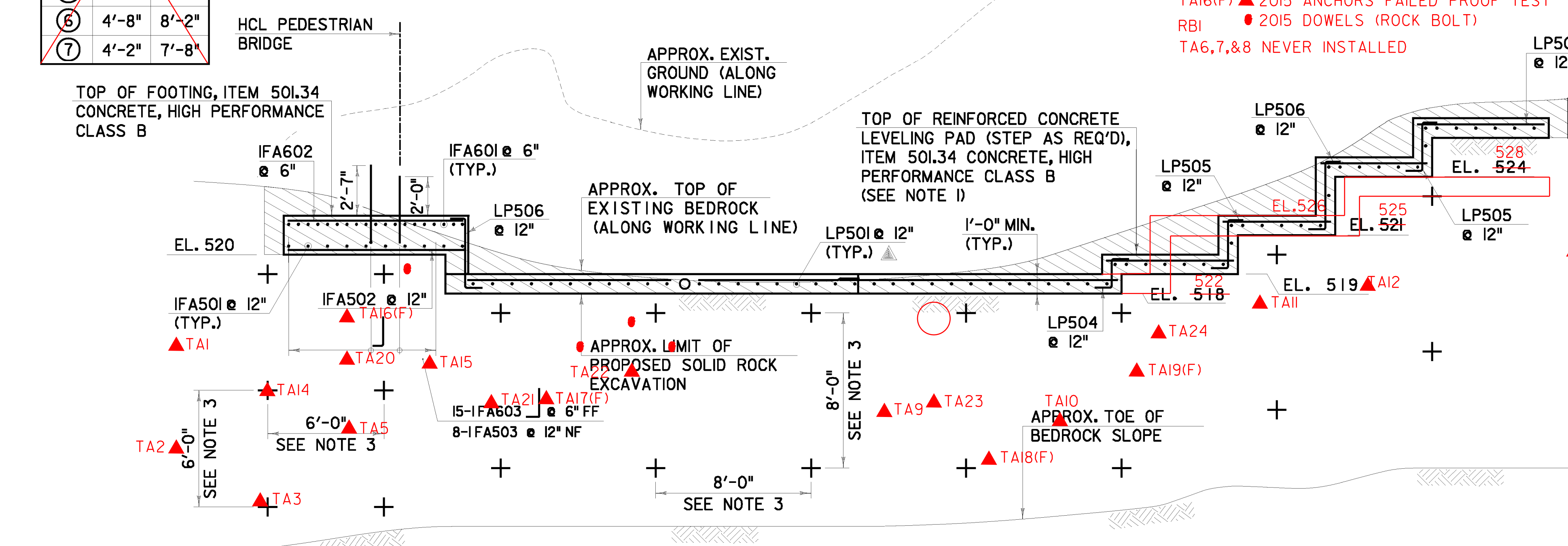
- STONE MASONRY WALL LEVELING PAD AND ABUTMENT FOOTING ELEVATIONS ARE BASED ON APPROXIMATION OF THE EXISTING BEDROCK PROFILE. THE DESIGN HEIGHT OF THE SUBSTRUCTURE ELEMENTS WERE DETERMINED BASED ON THE ELEVATIONS SHOWN. TO SUIT ACTUAL FIELD CONDITIONS, THE CONTRACTOR MAY PROPOSE ALTERNATE LEVELING PAD, FOOTING ELEVATIONS AND STEP LOCATIONS TO THE STRUCTURES ENGINEER FOR APPROVAL.
- FOR BIDDING PURPOSES, A QUANTITY OF 20 CY HAS BEEN INCLUDED UNDER ITEM 541.30 CONCRETE, CLASS C FOR CONSTRUCTION OF THE UNREINFORCED CONCRETE SHIM, AS REQUIRED FOR LEVELING.
- FOR BIDDING PURPOSES, A QUANTITY OF 220 LF HAS BEEN INCLUDED UNDER ITEM 900.640 SPECIAL PROVISION (ROCK DOWELING). THE FINAL LAYOUT AND QUANTITY OF ITEM 900.640 SPECIAL PROVISION (ROCK DOWELING) SHALL BE DETERMINED IN THE FIELD BY THE GEOTECHNICAL DESIGN CONSULTANT. THE CONTRACTOR SHALL STRIP LEDGE AND NOTIFY THE ENGINEER THAT THE AREA IS READY FOR INSPECTION.
- THE GEOTECHNICAL DESIGN CONSULTANT FOR THIS PROJECT, GEODESIGN, INCORPORATED, PERFORMED DESIGN FOR WORK SHOWN ON SHEETS 21-24, 33 & 37, WITH DRAFTING AND DETAIL ASSISTANCE FROM CHA.
- 3" CLR. UNLESS OTHERWISE SPECIFIED ON PLANS.
- ALL REINFORCING STEEL IN THE FOOTING AND LEVELING PAD SHALL BE PLAIN REINFORCING STEEL AND SHALL BE PAID FOR UNDER ITEM 507.11 REINFORCING STEEL, LEVEL 1.

EXIST. BRIDGE 7 (JERICHO) ABUTMENT AND WINGWALL TO BE PARTIALLY REMOVED (SEE SHT. 30)



	'A'	'B'
①	5'-8"	9'-2"
②	5'-8"	9'-2"
③	6'-1"	9'-7"
④	6'-0"	9'-6"
⑤	5'-6"	9'-0"
⑥	4'-8"	8'-2"
⑦	4'-2"	7'-8"

ABUTMENT 1 FOUNDATION PLAN
SCALE: 1/4" = 1'-0"

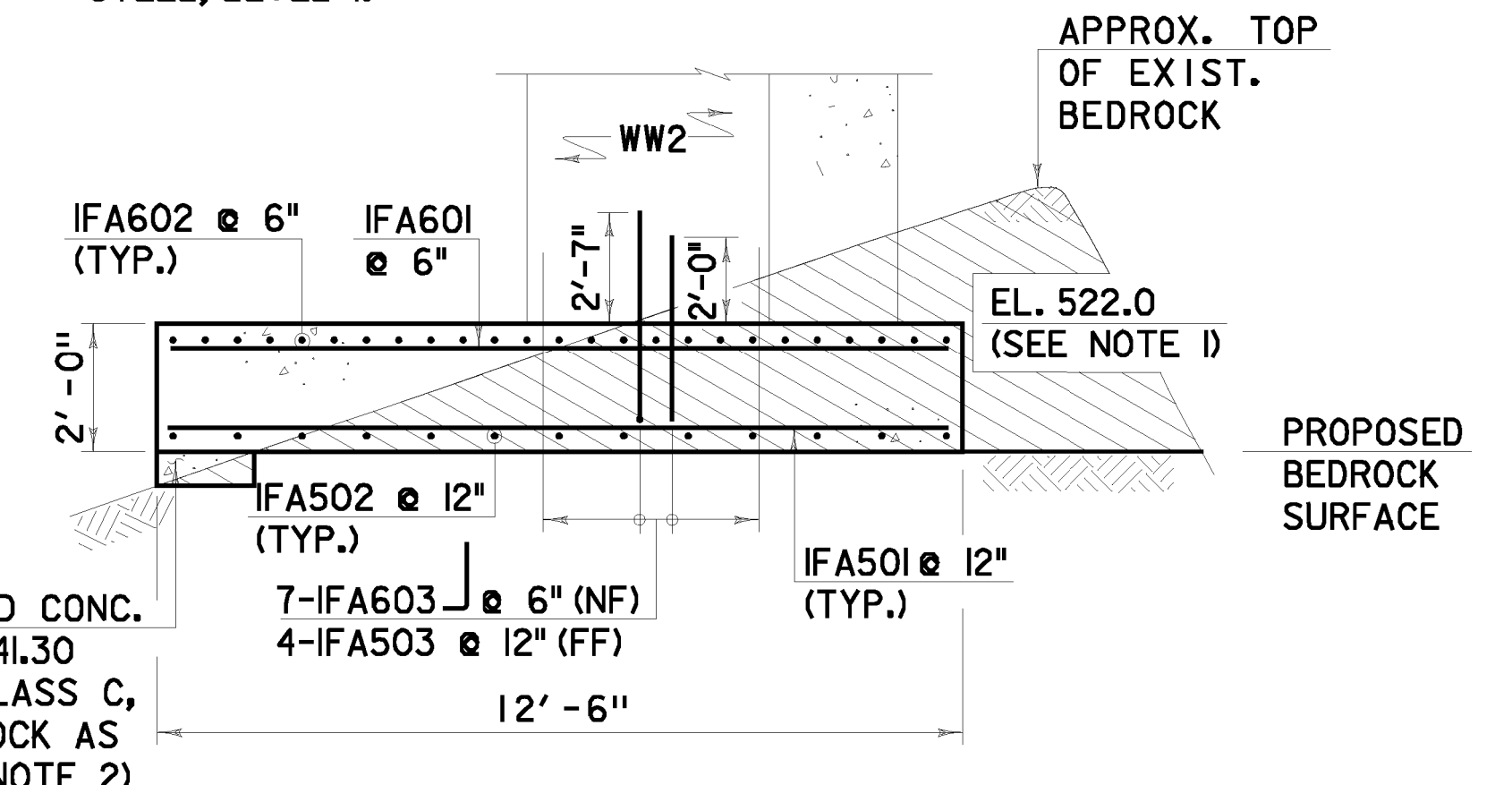


SECTION R-R
SCALE: 1/4" = 1'-0"

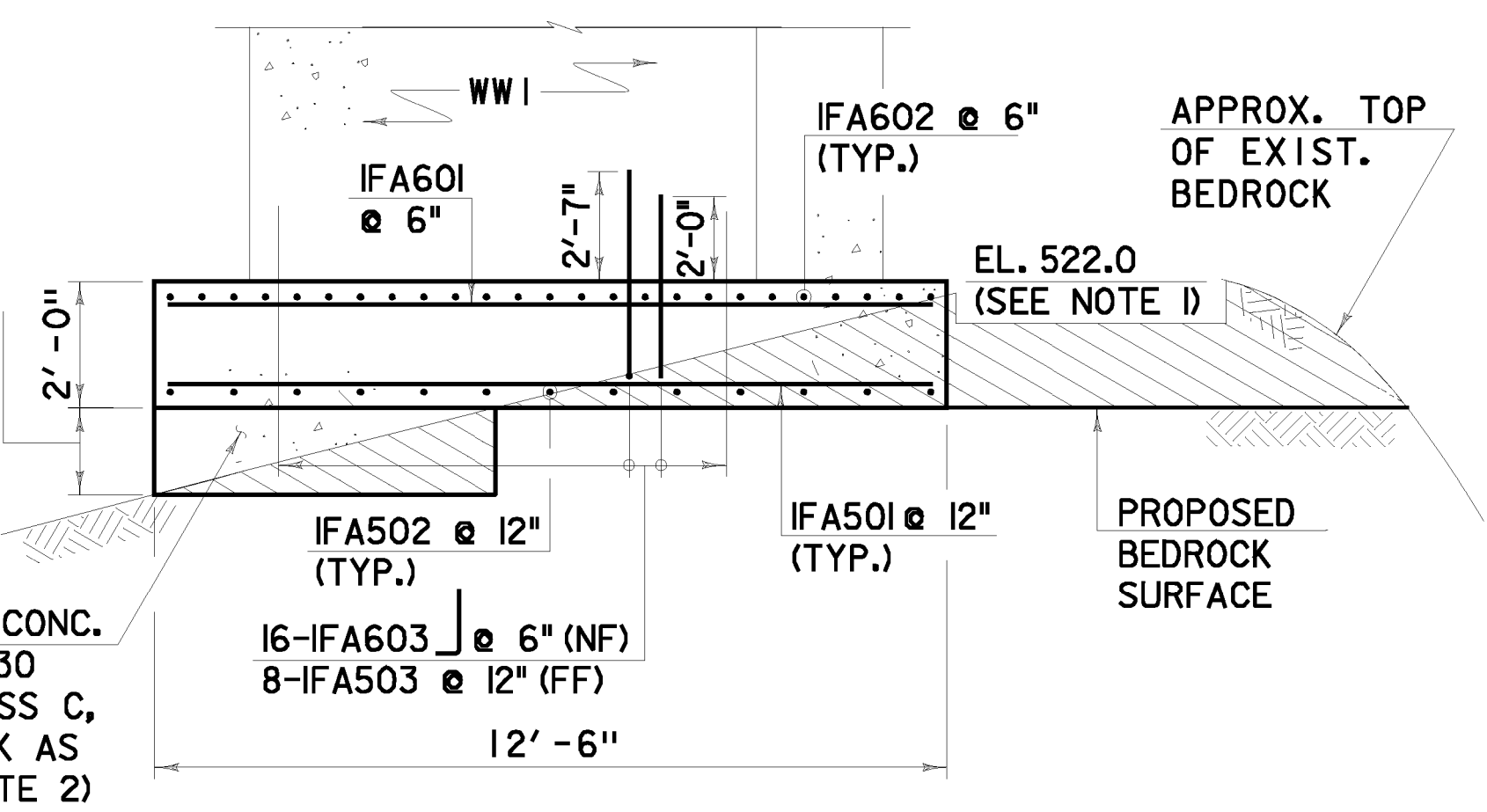
- LEGEND 1**
- [Hatched Area] APPROXIMATE LIMIT OF ITEM 203.16 SOLID ROCK EXCAVATION (SEE NOTE 1)
 - [Cross Symbol] APPROXIMATE LOCATION OF ITEM 900.640 SPECIAL PROVISION (ROCK DOWELING) (SEE NOTE 3 AND DETAILS SHT. 37)

- LEGEND 2**
- NF = NEAR FACE
 - FF = FAR FACE
 - EF = EACH FACE
 - ▲ = CUT IN FIELD

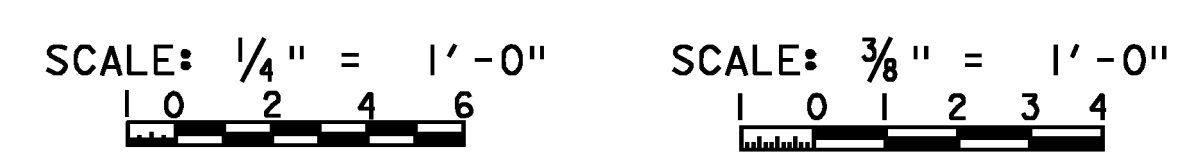
SEE LEVELING PAD TABLE FOR 'A' AND 'B' DIMENSIONS



SECTION S-S
SCALE: 3/8" = 1'-0"



SECTION T-T
SCALE: 3/8" = 1'-0"



ABUTMENT 1 FOUNDATION PLAN	PROJECT NAME: JERICHO	PROJECT NUMBER: STP FTBR (3)
	PROJECT LEADER: M.D.S.	DESIGNED BY: D.M.D.
	PLOT DATE: 4/7/2014	DRAWN BY: D.M.D.
	CHECKED BY: P.M.P.	SHEET 35 OF 62



FILE NAME: V:\Projects\ANY\K2\21113\CA00\MSTN\08F004\Consultants\208F004\foundatn\plan.dgn
DATE/TIME: 4/7/2014 4:46:14
USER: d496