

GPS CONTROL POINTS

HVCTRL #1

ESSEX 15  
 NORTH = 731391.71  
 EAST = 1505689.56  
 ELEV. = 578.48

GENERAL DESCRIPTION, ESSEX CENTER, 1 MI (1.6 KM) EAST OF, .5 MI (0.8 KM) WEST OF JERICHO, 5 MI (8.0 KM) EAST ESSEX JUNCTION TO REACH FROM JUNCTION OF VERMONT ROUTE 15 AND VERMONT ROUTE 128 IN ESSEX CENTER PROCEED EAST ALONG ROUTE 15 FOR 2.6 MI (4.2 KM) TO THE JUNCTION WITH TOWN HIGHWAY (WEED ROAD) ON THE NORTH. THENCE PROCEED NORTHWEST ALONG TOWN HIGHWAY FOR 0.3 MI (0.5 KM) TO THE STATION ON THE RIGHT (NORTH). THE STATION IS SET IN A LEDGE OUTCROP, 6 M (19.7 FT) NORTH AND .4 M (1.3 FT) LOWER THAN THE CENTERLINE OF TOWN HIGHWAY, 2.5 M (8.2 FT) EAST OF A WHITE BIRCH, 1 M (3.3 FT) WEST OF FIBERGLASS WITNESS POST.

HVCTRL #2

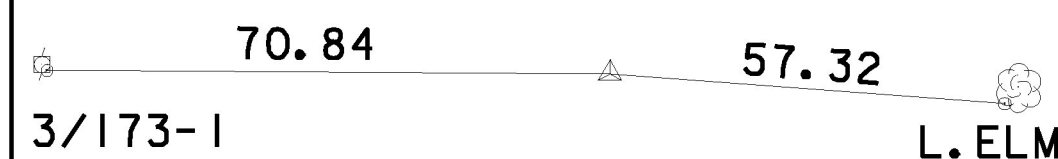
ESSEX 15 AZ  
 NORTH = 730696.73  
 EAST = 1508046.45  
 ELEV. = 551.41

GENERAL DESCRIPTION, ESSEX CENTER, 1 MI (1.6 KM) EAST OF, .5 MI (0.8 KM) WEST OF JERICHO, 5 MI (8.0 KM) EAST ESSEX JUNCTION TO REACH FROM JUNCTION OF VERMONT ROUTE 15 AND VERMONT ROUTE 128 IN ESSEX CENTER PROCEED EAST ALONG ROUTE 15 FOR 2.7 MI (4.3 KM) TO THE JUNCTION WITH A GRAVEL DRIVE ON THE LEFT (NORTH). THENCE PROCEED NORTH ALONG GRAVEL DRIVE FOR 0.1 MI (0.2 KM), THENCE PROCEED EAST ACROSS A BARB WIRE FENCE AND THROUGH A PASTURE FOR 40 M (131.2 FT) TO THE STATION. THE STATION IS SET IN A LEDGE OUTCROP, 40 M (131.2 FT) EAST OF AND 4 M (13.1 FT) HIGHER THAN THE CENTERLINE OF GRAVEL DRIVE, 12M SOUTH OF UTILITY POLE NUMBER 176-1.

TRAVERSE TIES

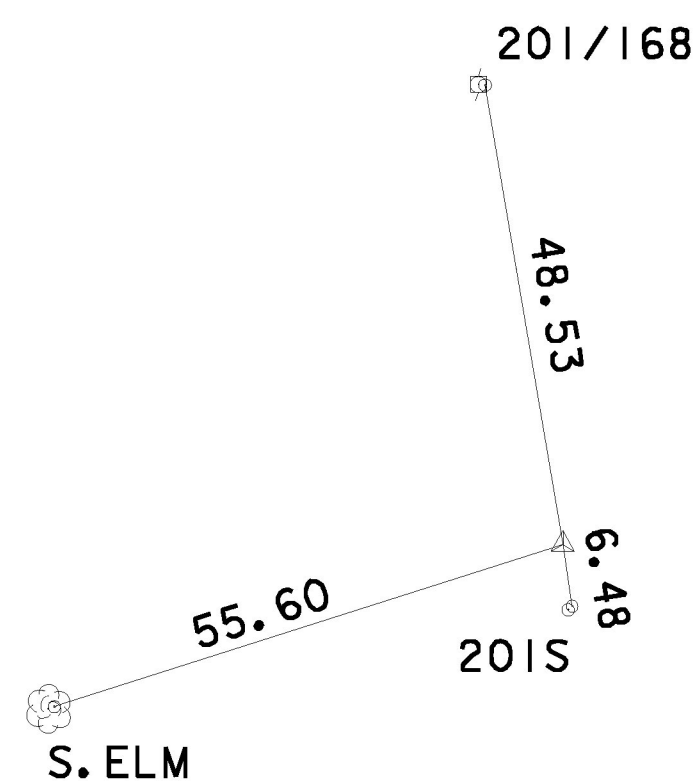
HVCTRL #3

NORTH = 730368.57  
 EAST = 1508316.19  
 ELEV. = 543.04



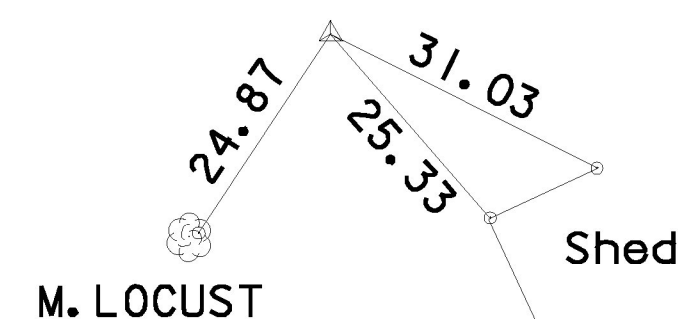
HVCTRL #4

NORTH = 730469.59  
 EAST = 1509138.34  
 ELEV. = 533.54



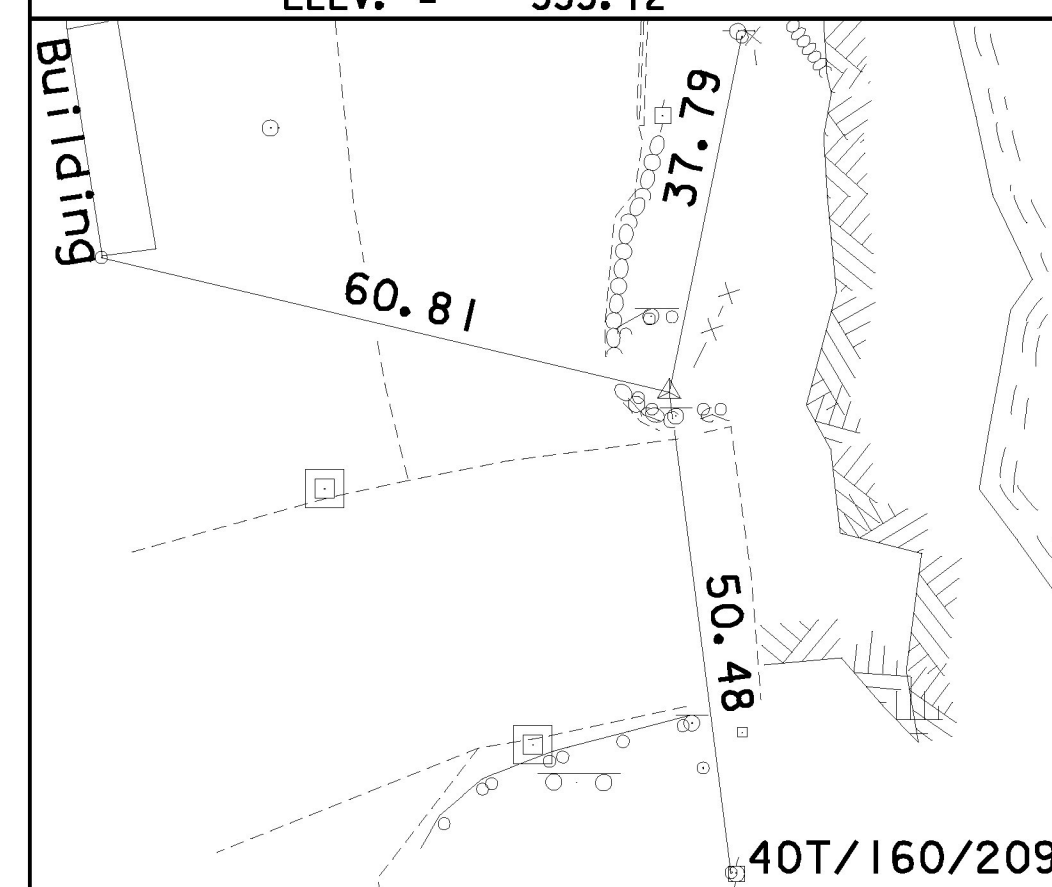
HVCTRL #5

NORTH = 730606.76  
 EAST = 1509646.27  
 ELEV. = 520.48



HVCTRL #6

NORTH = 730924.19  
 EAST = 1510090.03  
 ELEV. = 535.12



NORTH =  
 EAST =  
 ELEV. =

\*MAIN TRAVERSE COMPLETED 10/02/2006 BY L. ORVIS P.C & G. HITCHCOCK

FILE NAME: V:\Projects\ANY\K2\21113\CADD\WSTN\08F004\Consult\ents\08F004.txd  
 DATE/TIME: 4/7/2014 4:46:46  
 USER: r496

DATUM	
VERTICAL	NAD 88
HORIZONTAL	NAVD 83(92)
ADJUSTMENT	None

NOT TO SCALE



TIE SHEET

PROJECT NAME: JERICHO	
PROJECT NUMBER: STP FTBR (3)	
PROJECT LEADER: M.D.S.	PLOT DATE: 4/7/2014
DESIGNED BY: C.R.H.	DRAWN BY: C.R.H.
DWG. NO.: TIE-1	CHECKED BY: D.E.G.
	SHEET 14 OF 62