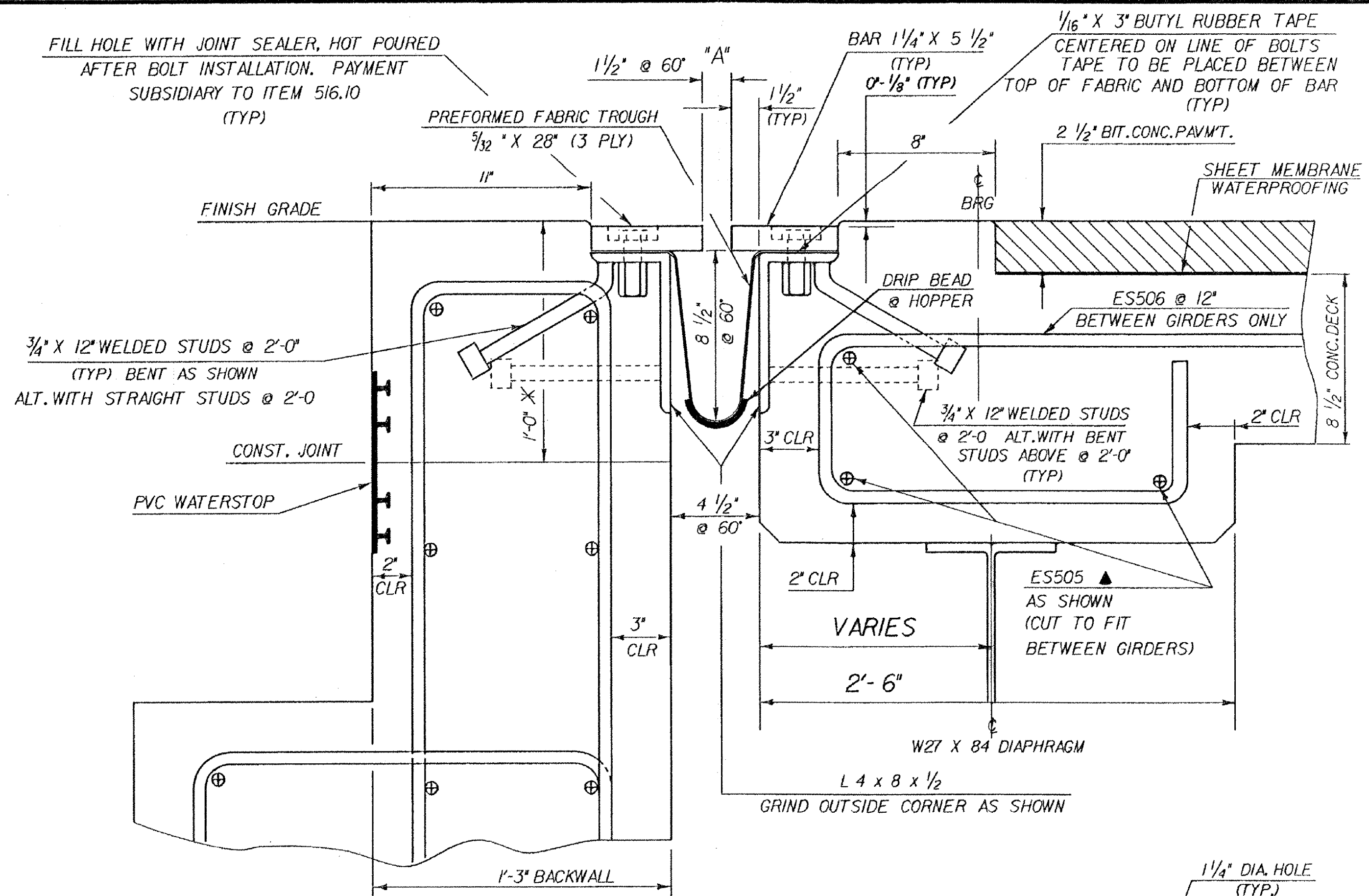
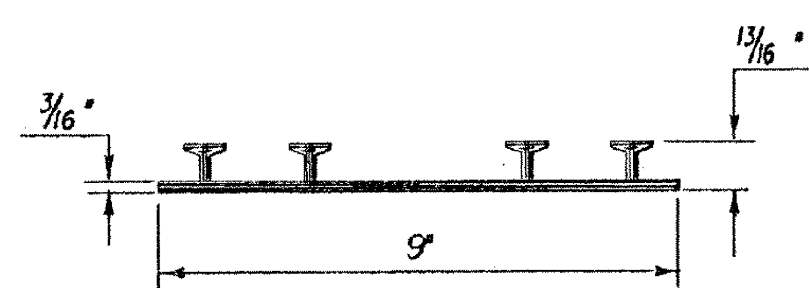


FILL HOLE WITH JOINT SEALER, HOT POURED AFTER BOLT INSTALLATION. PAYMENT SUBSIDIARY TO ITEM 516.10 (TYP)



TYPICAL SECTION BETWEEN GIRDERS (NORMAL)

SCALE: 3" = 1'-0"

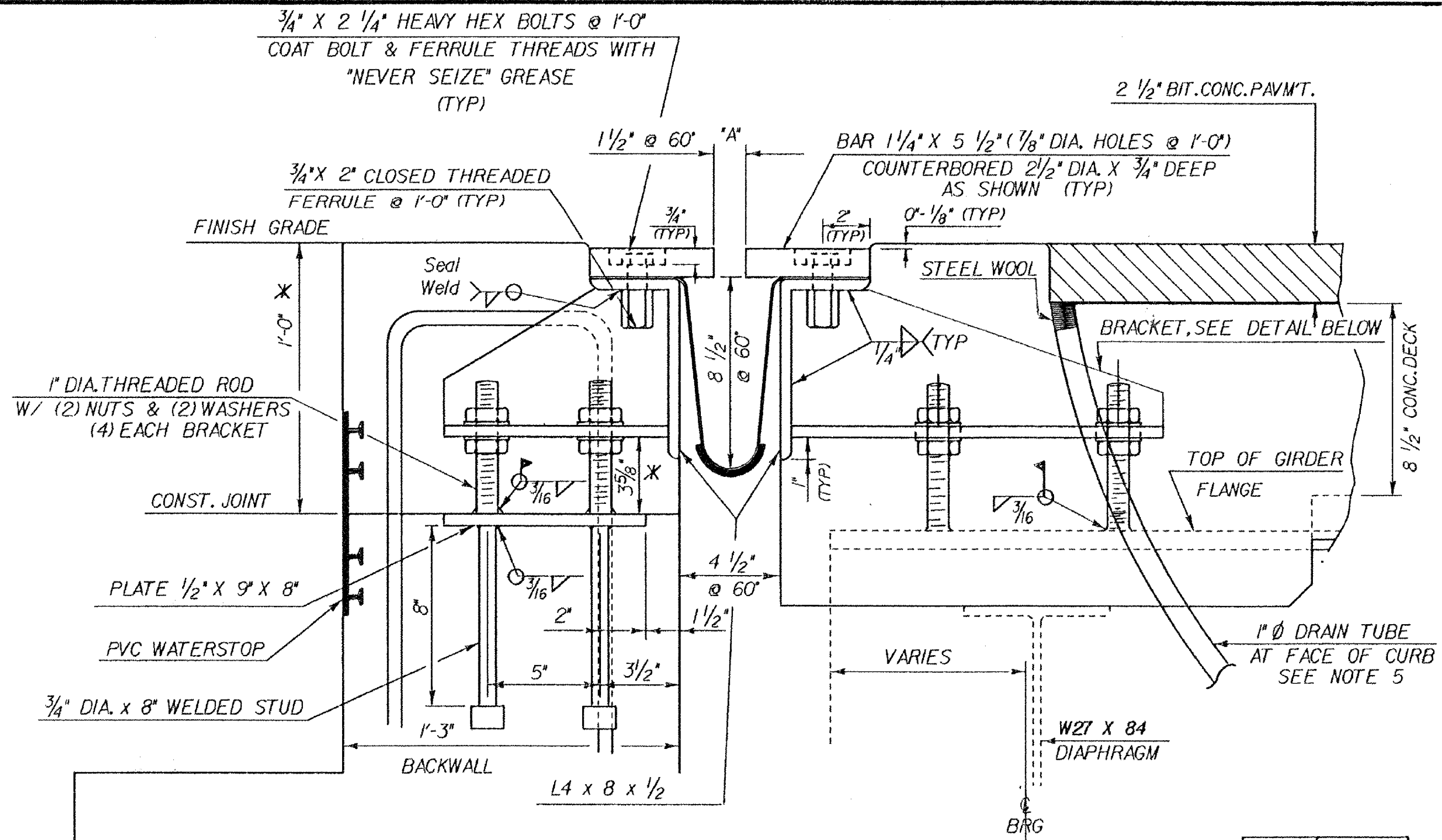


**P.V.C. WATERSTOP FOR CONSTRUCTION JOINTS**

THE COSTS FOR P.V.C. WATERSTOP SHALL BE INCLUDED IN THE UNIT PRICE BID FOR CONCRETE. OTHER CONFIGURATIONS MAY BE USED UPON APPROVAL OF THE STRUCTURES ENGINEER.

**NOTES**

1. THE FINAL FINISH OF THE EXPANSION DEVICE SHALL BE COVERED DURING THE PLACING OF BRIDGE DECK CONCRETE.
2. ALL STEEL COMPONENTS SHALL BE AASHTO M270 GRADE 36 GALVANIZED OR METALIZED AS PER SUBSECTION 506J5 (b) OR (c).
3. THE 1 1/4" x 5 1/2" BARS SHALL BE FURNISHED IN 2 PIECES MINIMUM, EACH SIDE OF JOINT.
4. DETAILS ON THIS SHEET ARE FOR ITEM 516.10 "BRIDGE EXPANSION JOINTS".
5. A 1" DIAMETER PLASTIC DRAIN TUBE SHALL BE INSTALLED AS SHOWN AT THE FACE OF CURB. THE UPPER END IS TO BE PLUGGED WITH STEEL WOOL AND THE LOWER END IS TO EXTEND 6" BELOW THE BOTTOM OF THE ADJACENT GIRDER. THE DRAIN TUBES SHALL BE FASTENED TO THE GIRDERS USING A METHOD APPROVED BY THE ENGINEER.
6. A DRIP BEAD OF PREFORMED FABRIC MATERIAL SHALL BE CEMENTED TO THE BOTTOM OF THE FABRIC TROUGH USING AN ADHESIVE APPROVED BY THE MANUFACTURER.

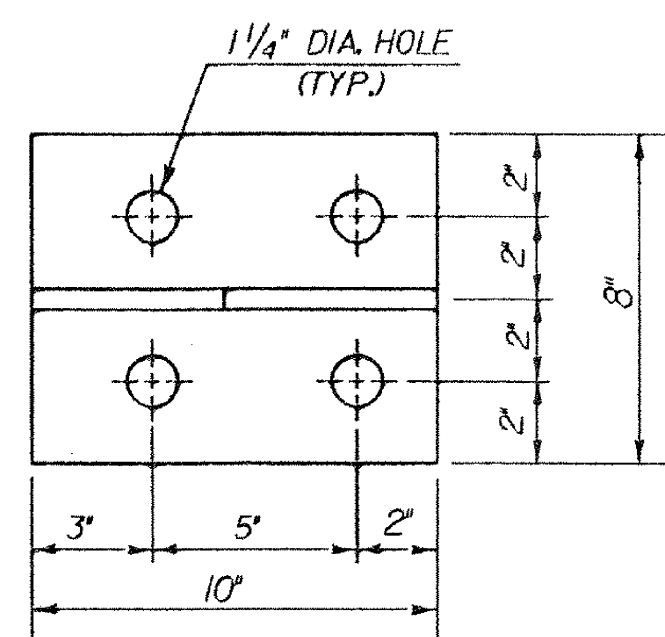


TYPICAL SECTION AT GIRDERS (NORMAL)

SCALE: 3" = 1'-0"

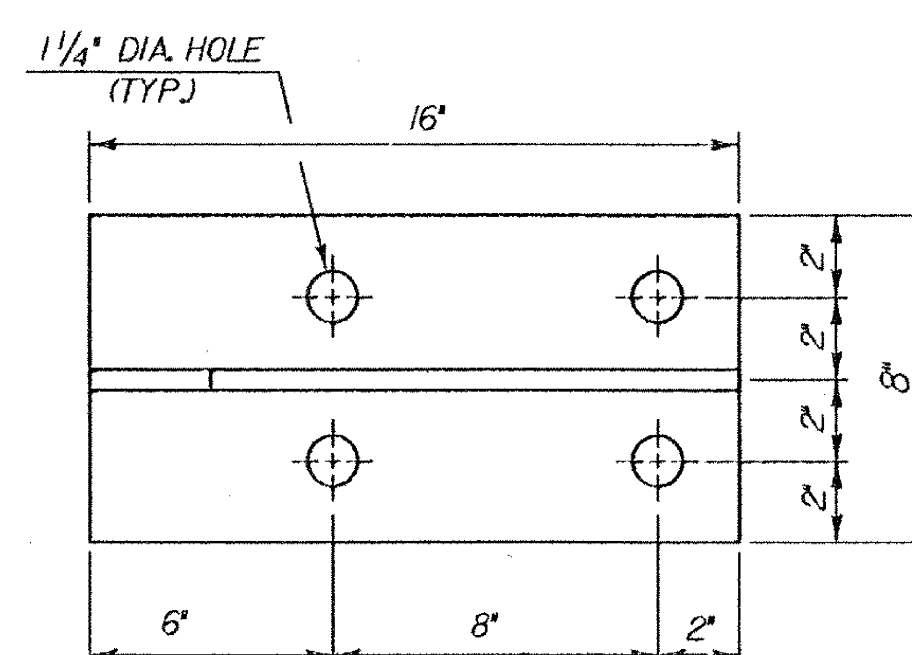
| TEMP   | "A" DIST |
|--------|----------|
| 0° F   | 2"       |
| 15° F  | 1 1/8"   |
| 30° F  | 1 3/8"   |
| 45° F  | 1 5/8"   |
| 60° F  | 1 7/8"   |
| 75° F  | 1 3/4"   |
| 90° F  | 1 1/2"   |
| 105° F | 1 1/4"   |

\* THESE DIMENSIONS ARE THEORETICAL AND MAY CHANGE DEPENDING UPON THE OUTCOME OF THE BEAM PROFILES



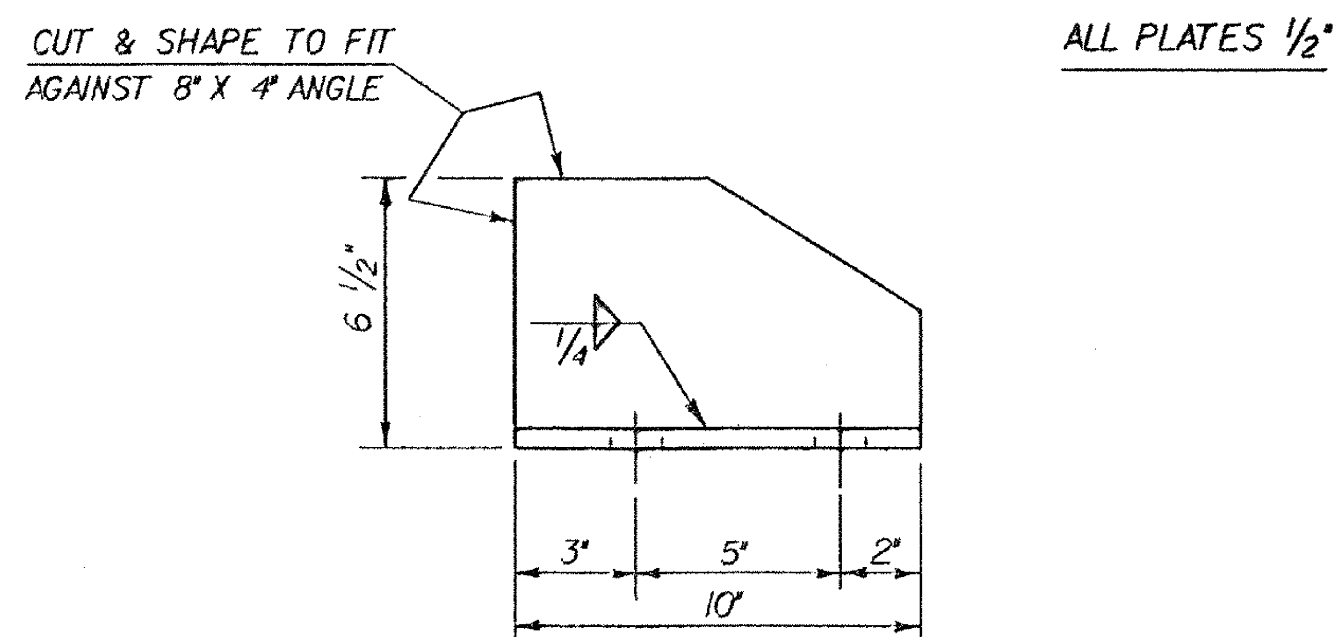
BRACKET PLAN IN BACKWALL

SCALE: 3" = 1'-0"



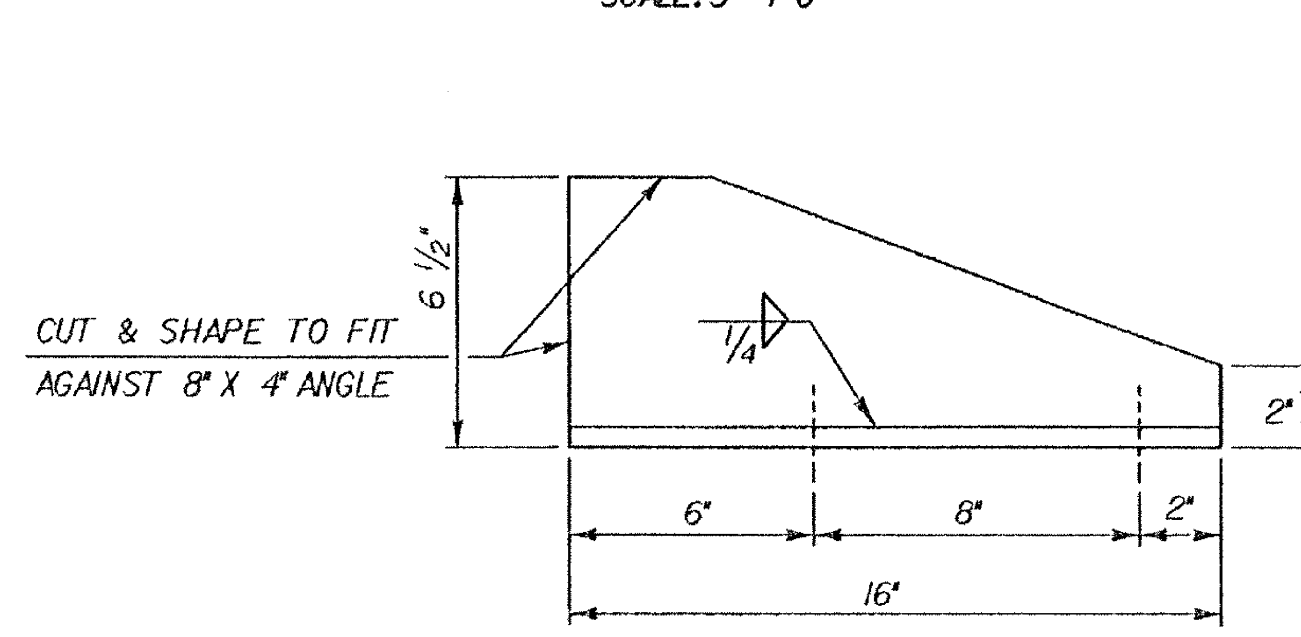
BRACKET PLAN ON GIRDER

SCALE: 3" = 1'-0"



BRACKET ELEVATION IN BACKWALL

SCALE: 3" = 1'-0"



BRACKET ELEVATION ON GIRDER

SCALE: 3" = 1'-0"

For Reference Only  
Waterbury-Moretown  
BHF MEMB (12)  
Sheet 27 of 28

**STATE OF VERMONT AGENCY OF TRANSPORTATION**

|   |                                   |
|---|-----------------------------------|
| Town Of <b>MORETOWN</b>                   | Bridge No. <b>4</b>               |
| Highway No. <b>VT 100B</b>                | Log Sta. <b>85+53</b>             |
|   | Surv. Sta. <b>12+21 1/2</b>       |
| <b>VT 100B OVER MAD RIVER</b>             |                                   |
| <b>EXPANSION JOINT DETAILS</b>            |                                   |
| Designed By <b>C.P. WILLIAMS</b>          | Drawn By <b>T.A. SUMNER</b>       |
| Checked By <b>C.P. WILLIAMS</b>           | Bridge Design Supervisor          |
| Date <b>4/92</b>                          | Date <b>5/92</b>                  |
| PROJECT <b>MORETOWN</b>                   | PROJECT NO. <b>BRZ - 1446 (1)</b> |
| I.C.C. Info. <b>ZH2E3A307BF174EXP.DGN</b> | <b>78P174EXP.PAR</b>              |
| Bridge Sheet No. <b>BR22</b>              | Sheet <b>23</b> of <b>22</b>      |