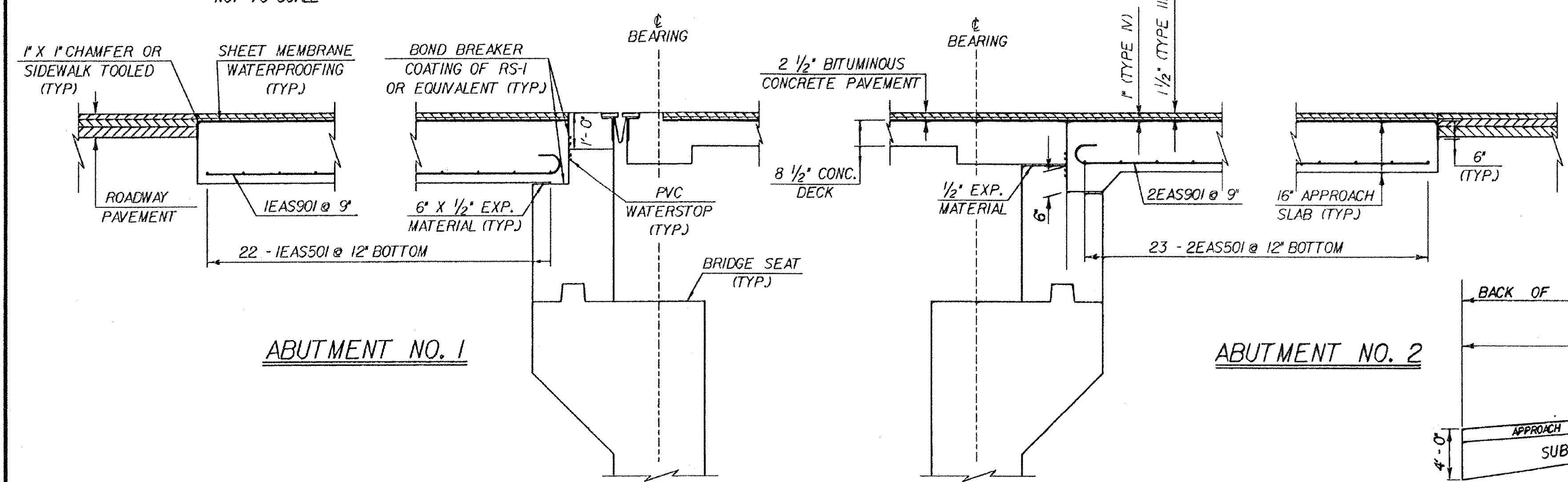


APPROACH SLAB NO. 1 PLAN
NTS

APPROACH SLAB NO. 2 PLAN
NTS



ABUTMENT NO. 1

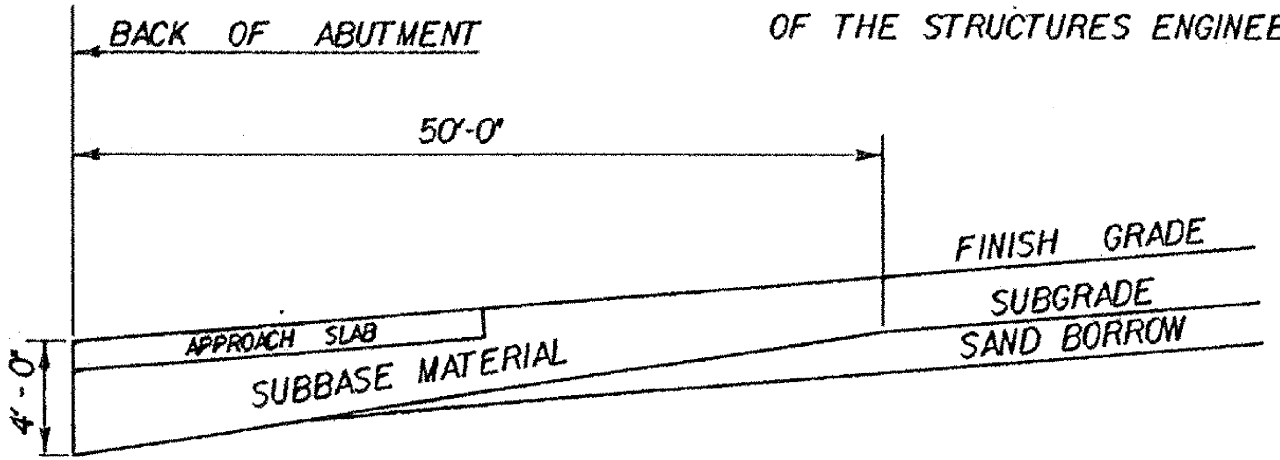
ABUTMENT NO. 2

SECTION A - A
NTS

SECTION B - B
NTS

P.V.C. WATERSTOP FOR CONSTRUCTION JOINTS

THE COSTS FOR P.V.C. WATERSTOP SHALL BE INCLUDED IN THE UNIT PRICE BID FOR CONCRETE. OTHER CONFIGURATIONS MAY BE USED UPON APPROVAL OF THE STRUCTURES ENGINEER.



SUBBASE DETAIL AT ABUTMENTS
(ELEVATION IN CUT AND FILL)
NOT TO SCALE

For Reference Only
Waterbury-Moretown
BHF MEMB (12)
Sheet 23 of 28

**STATE OF VERMONT
AGENCY OF TRANSPORTATION**

Town Of	MORETOWN	Bridge No.	4
Highway No.	VT100B	Log Sta.	86 + 53
		Surv. Sta.	12 + 21 - 1/2
VT100B OVER MAD RIVER			
APPROACH SLAB DETAILS			
Designed By	C.P. WILLIAMS	Drawn By	T.A. SUMNER
Checked By	C.P. WILLIAMS	Date	4/92
		Bridge Design Supervisor	F.W. Bolthorn date 5/92
PROJECT	MORETOWN	PROJECT NO.	BRZ - 1446 (1)
I.G.C. Info.	ZH2134.30178FIT4AS.DGN		78FIT4AS1PARM
Bridge Sheet No.	BR110	Sheet	43 of 82