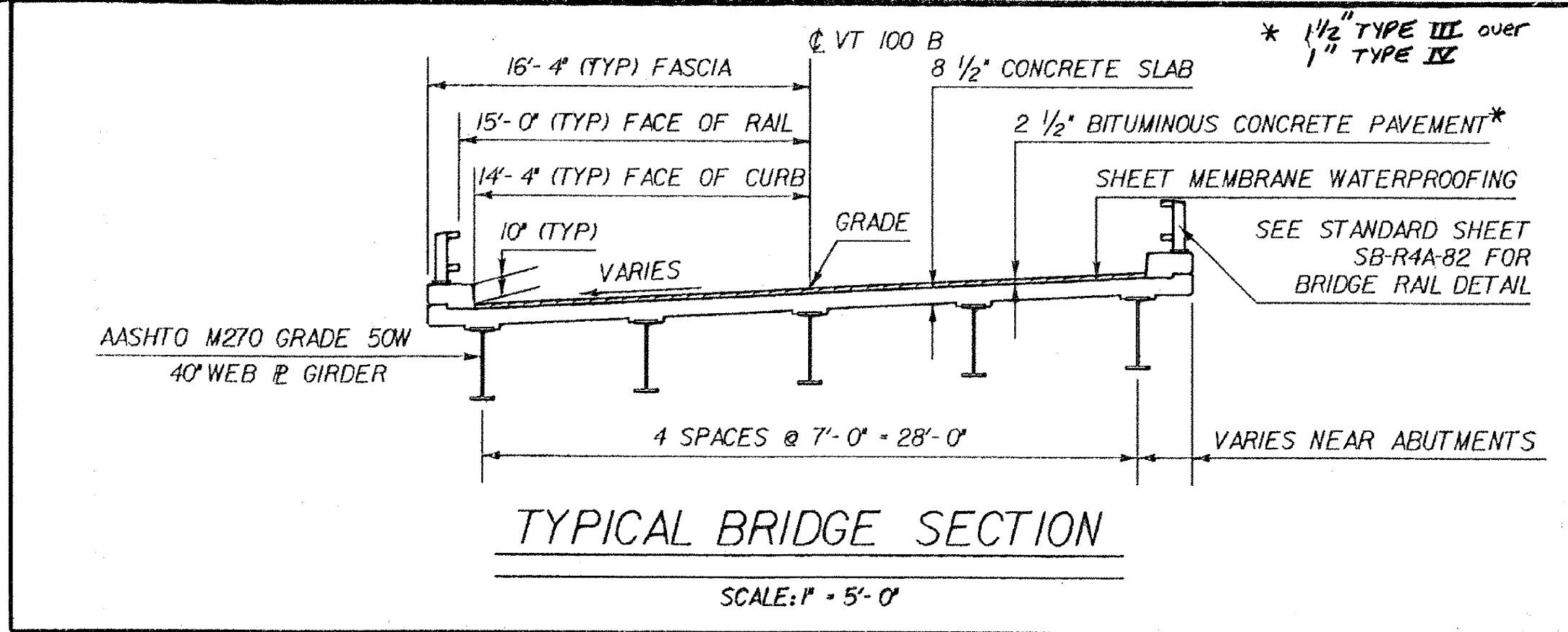
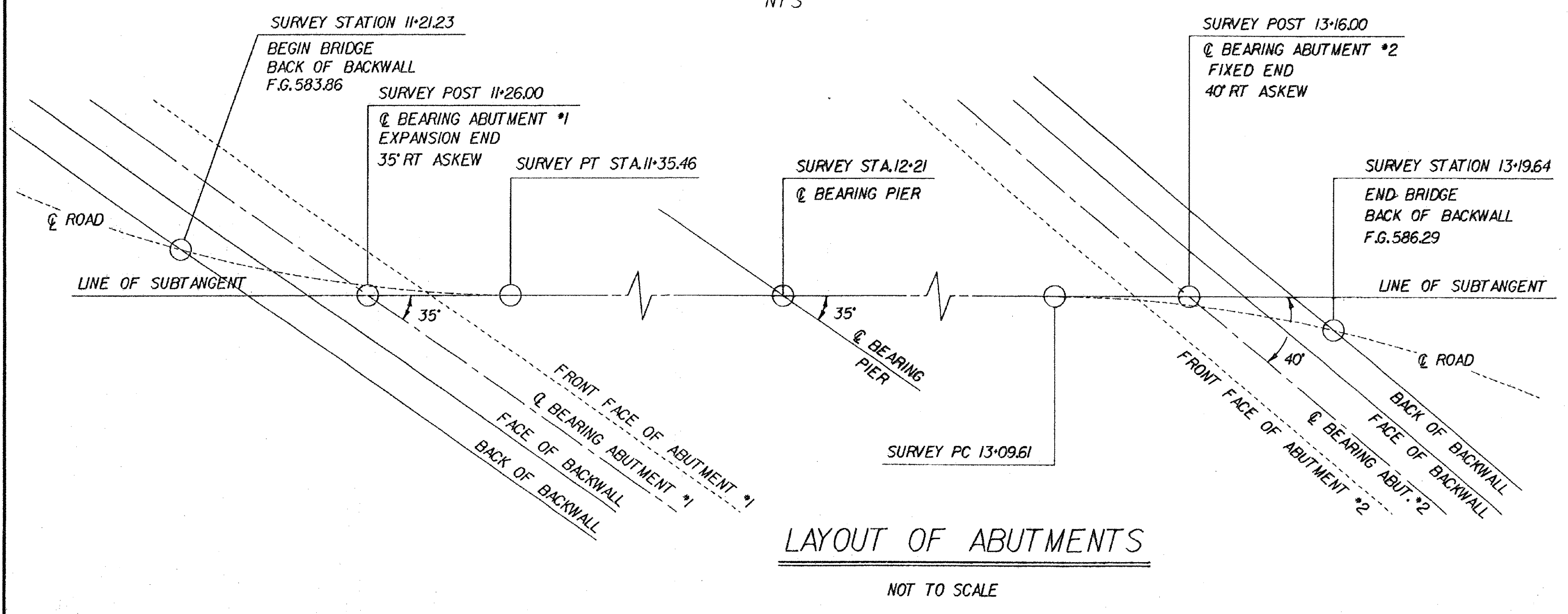
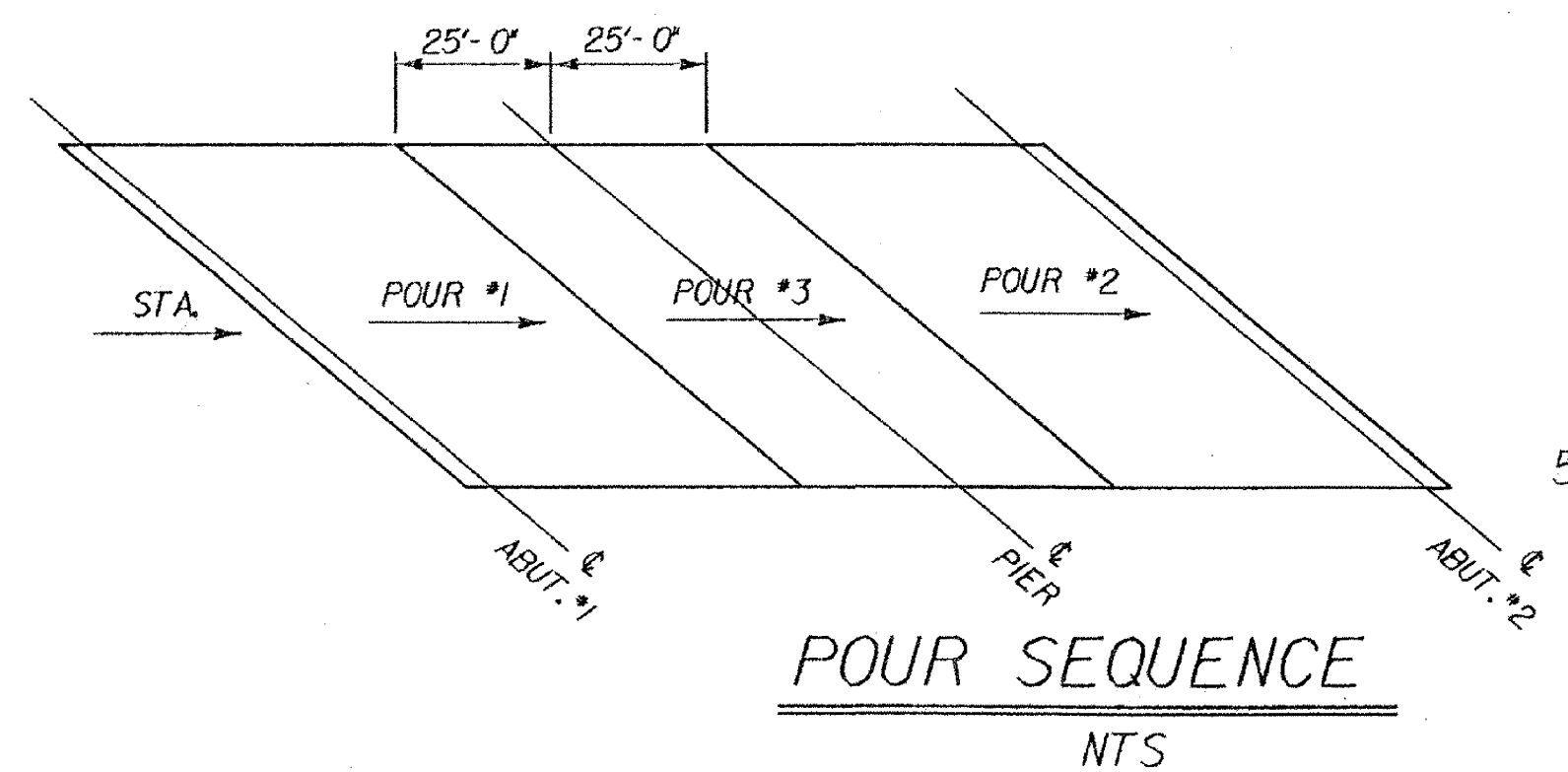


LIST OF SHEETS

BR100	PRELIMINARY INFORMATION
BR101	BRIDGE QUANTITIES
BR102	GENERAL NOTES
BR103	PLAN & ELEVATION
BR104-106	BORING INFORMATION
BR107	TYPICAL SECTION & DECK REINFORCING PLAN
BR108	FRAMING PLAN & GIRDER ELEVATION
BR109	DIAPHRAGM & SPLICE DETAILS
BR110	APPROACH SLAB DETAILS
BR111	BEARING DETAILS
BR112	ABUTMENT 2 BEARING DETAILS & BEARING NOTES
BR113	MISCELLANEOUS DETAILS
BR114	ABUTMENT 1 DETAILS
BR115	ABUTMENT 2 DETAILS
BR116	FOOTING REINFORCING STEEL
BR117	PILE LAYOUT
BR118	WINGWALL 1 DETAILS
BR119	WINGWALL 2,3,4 DETAILS
BR120	BACKWALL DETAILS
BR121	PIER DETAILS
BR122	EXPANSION JOINT DETAILS
BR123	EXPANSION JOINT PLAN VIEW
BR124	END BRIDGE RAIL DETAIL
BR125	SCUPPER DETAILS
BR126-127	REINFORCING STEEL SCHEDULE
BR128-133	CHANNEL SECTIONS



- NOTES**
1. THE SEQUENCE OF POURS 1 & 2 MAY BE INTERCHANGED. A MINIMUM OF 96 HOURS BETWEEN POURS IS REQUIRED.
 2. IF APPROVED BY THE ENGINEER, POURS 1 & 2 OR ALL SECTIONS MAY BE Poured THE SAME DAY PROVIDED THE MAXIMUM TIME OF THE POUR IS 8 HOURS AND THE INDICATED POURING SEQUENCE IS FOLLOWED AND A RETARDING ADMIXTURE IS USED SO THAT THE DECK CONCRETE WILL NOT SET UP UNTIL ALL THE POUR HAS BEEN MADE. THE RETARDING ADMIXTURE WILL BE SUBSIDIARY TO THE ITEM 50122, CONCRETE CLASS A.
 3. ALL POURS SHALL START FROM THE LOW END (ELEVATION WISE).
 4. IF ALL SECTIONS ARE NOT Poured IN THE SAME DAY, USE TRANSVERSE BRIDGE SLAB CONSTRUCTION JOINTS. (SEE SHEET BR113 FOR DETAILS.)
 5. BRIDGE DECK CONCRETE SHALL BE DEPOSITED AND SCREEDED PARALLEL TO THE CENTERLINE OF BEARING.



EXISTING STRUCTURE	
1. STRUCTURE TYPE	SINGLE SPAN STEEL
2. SPAN LENGTH(S) CENTER TO CENTER OF BEARINGS	125.0'
3. CLEAR SPAN LENGTH(S) NORMAL TO STREAM	125.0'
4. WATERWAY AREA OF FULL OPENING (NORMAL TO STREAM)	1650 SQ. FT.
5. WATER SURFACE ELEVATION @ Q 2.33	569.5
6. WATER SURFACE ELEVATION AT FLOOD OF RECORD	YEAR 1927 ESTIMATED DISCHARGE
7. DOES ALL WATER PASS THROUGH EXISTING STRUCTURE? YES/IF NOT, AT WHAT FREQUENCY AND ELEVATION DOES RELIEF OCCUR?	
8. TYPE OF SUBSTRUCTURE FOUNDATION MATERIAL	TIMBER PILES TO LEDGE
9. DISPOSITION OF STRUCTURE	REMOVE EXISTING STRUCTURE

NEW STRUCTURE	
1. STRUCTURE TYPE	2 SPAN CONTINUOUS PLATE GIRDER
2. SPAN LENGTH(S) CENTER TO CENTER OF BEARINGS	2 SPANS @ 95.0'
3. VERTICAL CLEARANCE ABOVE STREAMBED OR ROAD UNDER	15.2'
4. CLEAR SPAN LENGTH(S) NORMAL TO STREAM	91.5, 93.5 TOTAL 185.0'
5. WATERWAY AREA OF FULL OPENING (NORMAL TO STREAM)	1630 SQ. FT.
6. ARE PROVISIONS TO BE MADE FOR PUBLIC UTILITIES?	

HYDRAULIC DATA			
Q 2.33	4000 CFS	WATER ELEVATION	569.5
Q 10	9400 CFS	WATER ELEVATION	573.0
Q 25	12600 CFS	WATER ELEVATION	574.7
Q 50	15000 CFS	WATER ELEVATION	575.8
Q 100	17000 CFS	WATER ELEVATION	576.0
Q 150	18000 CFS	WATER ELEVATION	576.0
Q 200	18500 CFS	WATER ELEVATION	576.0
Q 250	18800 CFS	WATER ELEVATION	576.0
Q 300	19000 CFS	WATER ELEVATION	576.0
Q 350	19200 CFS	WATER ELEVATION	576.0
Q 400	19400 CFS	WATER ELEVATION	576.0
Q 450	19600 CFS	WATER ELEVATION	576.0
Q 500	19800 CFS	WATER ELEVATION	576.0
Q 550	20000 CFS	WATER ELEVATION	576.0
Q 600	20200 CFS	WATER ELEVATION	576.0
Q 650	20400 CFS	WATER ELEVATION	576.0
Q 700	20600 CFS	WATER ELEVATION	576.0
Q 750	20800 CFS	WATER ELEVATION	576.0
Q 800	21000 CFS	WATER ELEVATION	576.0
Q 850	21200 CFS	WATER ELEVATION	576.0
Q 900	21400 CFS	WATER ELEVATION	576.0
Q 950	21600 CFS	WATER ELEVATION	576.0
Q 1000	21800 CFS	WATER ELEVATION	576.0
Q 1050	22000 CFS	WATER ELEVATION	576.0
Q 1100	22200 CFS	WATER ELEVATION	576.0
Q 1150	22400 CFS	WATER ELEVATION	576.0
Q 1200	22600 CFS	WATER ELEVATION	576.0
Q 1250	22800 CFS	WATER ELEVATION	576.0
Q 1300	23000 CFS	WATER ELEVATION	576.0
Q 1350	23200 CFS	WATER ELEVATION	576.0
Q 1400	23400 CFS	WATER ELEVATION	576.0
Q 1450	23600 CFS	WATER ELEVATION	576.0
Q 1500	23800 CFS	WATER ELEVATION	576.0
Q 1550	24000 CFS	WATER ELEVATION	576.0
Q 1600	24200 CFS	WATER ELEVATION	576.0
Q 1650	24400 CFS	WATER ELEVATION	576.0
Q 1700	24600 CFS	WATER ELEVATION	576.0
Q 1750	24800 CFS	WATER ELEVATION	576.0
Q 1800	25000 CFS	WATER ELEVATION	576.0
Q 1850	25200 CFS	WATER ELEVATION	576.0
Q 1900	25400 CFS	WATER ELEVATION	576.0
Q 1950	25600 CFS	WATER ELEVATION	576.0
Q 2000	25800 CFS	WATER ELEVATION	576.0
Q 2050	26000 CFS	WATER ELEVATION	576.0
Q 2100	26200 CFS	WATER ELEVATION	576.0
Q 2150	26400 CFS	WATER ELEVATION	576.0
Q 2200	26600 CFS	WATER ELEVATION	576.0
Q 2250	26800 CFS	WATER ELEVATION	576.0
Q 2300	27000 CFS	WATER ELEVATION	576.0
Q 2350	27200 CFS	WATER ELEVATION	576.0
Q 2400	27400 CFS	WATER ELEVATION	576.0
Q 2450	27600 CFS	WATER ELEVATION	576.0
Q 2500	27800 CFS	WATER ELEVATION	576.0
Q 2550	28000 CFS	WATER ELEVATION	576.0
Q 2600	28200 CFS	WATER ELEVATION	576.0
Q 2650	28400 CFS	WATER ELEVATION	576.0
Q 2700	28600 CFS	WATER ELEVATION	576.0
Q 2750	28800 CFS	WATER ELEVATION	576.0
Q 2800	29000 CFS	WATER ELEVATION	576.0
Q 2850	29200 CFS	WATER ELEVATION	576.0
Q 2900	29400 CFS	WATER ELEVATION	576.0
Q 2950	29600 CFS	WATER ELEVATION	576.0
Q 3000	29800 CFS	WATER ELEVATION	576.0
Q 3050	30000 CFS	WATER ELEVATION	576.0
Q 3100	30200 CFS	WATER ELEVATION	576.0
Q 3150	30400 CFS	WATER ELEVATION	576.0
Q 3200	30600 CFS	WATER ELEVATION	576.0
Q 3250	30800 CFS	WATER ELEVATION	576.0
Q 3300	31000 CFS	WATER ELEVATION	576.0
Q 3350	31200 CFS	WATER ELEVATION	576.0
Q 3400	31400 CFS	WATER ELEVATION	576.0
Q 3450	31600 CFS	WATER ELEVATION	576.0
Q 3500	31800 CFS	WATER ELEVATION	576.0
Q 3550	32000 CFS	WATER ELEVATION	576.0
Q 3600	32200 CFS	WATER ELEVATION	576.0
Q 3650	32400 CFS	WATER ELEVATION	576.0
Q 3700	32600 CFS	WATER ELEVATION	576.0
Q 3750	32800 CFS	WATER ELEVATION	576.0
Q 3800	33000 CFS	WATER ELEVATION	576.0
Q 3850	33200 CFS	WATER ELEVATION	576.0
Q 3900	33400 CFS	WATER ELEVATION	576.0
Q 3950	33600 CFS	WATER ELEVATION	576.0
Q 4000	33800 CFS	WATER ELEVATION	576.0
Q 4050	34000 CFS	WATER ELEVATION	576.0
Q 4100	34200 CFS	WATER ELEVATION	576.0
Q 4150	34400 CFS	WATER ELEVATION	576.0
Q 4200	34600 CFS	WATER ELEVATION	576.0
Q 4250	34800 CFS	WATER ELEVATION	576.0
Q 4300	35000 CFS	WATER ELEVATION	576.0
Q 4350	35200 CFS	WATER ELEVATION	576.0
Q 4400	35400 CFS	WATER ELEVATION	576.0
Q 4450	35600 CFS	WATER ELEVATION	576.0
Q 4500	35800 CFS	WATER ELEVATION	576.0
Q 4550	36000 CFS	WATER ELEVATION	576.0
Q 4600	36200 CFS	WATER ELEVATION	576.0
Q 4650	36400 CFS	WATER ELEVATION	576.0
Q 4700	36600 CFS	WATER ELEVATION	576.0
Q 4750	36800 CFS	WATER ELEVATION	576.0
Q 4800	37000 CFS	WATER ELEVATION	576.0
Q 4850	37200 CFS	WATER ELEVATION	576.0
Q 4900	37400 CFS	WATER ELEVATION	576.0
Q 4950	37600 CFS	WATER ELEVATION	576.0
Q 5000	37800 CFS	WATER ELEVATION	576.0
Q 5050	38000 CFS	WATER ELEVATION	576.0
Q 5100	38200 CFS	WATER ELEVATION	576.0
Q 5150	38400 CFS	WATER ELEVATION	576.0
Q 5200	38600 CFS	WATER ELEVATION	576.0
Q 5250	38800 CFS	WATER ELEVATION	576.0
Q 5300	39000 CFS	WATER ELEVATION	576.0
Q 5350	39200 CFS	WATER ELEVATION	576.0
Q 5400	39400 CFS	WATER ELEVATION	576.0
Q 5450	39600 CFS	WATER ELEVATION	576.0
Q 5500	39800 CFS	WATER ELEVATION	576.0
Q 5550	40000 CFS	WATER ELEVATION	576.0
Q 5600	40200 CFS	WATER ELEVATION	576.0
Q 5650	40400 CFS	WATER ELEVATION	576.0
Q 5700	40600 CFS	WATER ELEVATION	576.0
Q 5750	40800 CFS	WATER ELEVATION	576.0
Q 5800	41000 CFS	WATER ELEVATION	576.0
Q 5850	41200 CFS	WATER ELEVATION	576.0
Q 5900	41400 CFS	WATER ELEVATION	576.0
Q 5950	41600 CFS	WATER ELEVATION	576.0
Q 6000	41800 CFS	WATER ELEVATION	576.0
Q 6050	42000 CFS	WATER ELEVATION	576.0
Q 6100	42200 CFS	WATER ELEVATION	576.0
Q 6150	42400 CFS	WATER ELEVATION	576.0
Q 6200	42600 CFS	WATER ELEVATION	576.0
Q 6250	42800 CFS	WATER ELEVATION	576.0
Q 6300	43000 CFS	WATER ELEVATION	576.0
Q 6350	43200 CFS	WATER ELEVATION	576.0
Q 6400	43400 CFS	WATER ELEVATION	576.0
Q 6450	43600 CFS	WATER ELEVATION	576.0
Q 6500	43800 CFS	WATER ELEVATION	576.0
Q 6550	44000 CFS	WATER ELEVATION	576.0
Q 6600	44200 CFS	WATER ELEVATION	576.0
Q 6650	44400 CFS	WATER ELEVATION	576.0
Q 6700	44600 CFS	WATER ELEVATION	576.0
Q 6750	44800 CFS	WATER ELEVATION	576.0
Q 6800	45000 CFS	WATER ELEVATION	576.0
Q 6850	45200 CFS	WATER ELEVATION	576.0
Q 6900	45400 CFS	WATER ELEVATION	576.0
Q 6950	45600 CFS	WATER ELEVATION	576.0
Q 7000	45800 CFS	WATER ELEVATION	576.0
Q 7050	46000 CFS	WATER ELEVATION	576.0
Q 7100	46200 CFS	WATER ELEVATION	576.0
Q 7150	46400 CFS	WATER ELEVATION	576.0
Q 7200	46600 CFS	WATER ELEVATION	576.0
Q 7250	46800 CFS	WATER ELEVATION	576.0
Q 7300	47000 CFS	WATER ELEVATION	576.0
Q 7350	47200 CFS	WATER ELEVATION	576.0
Q 7400	47400 CFS	WATER ELEVATION	576.0
Q 7450	47600 CFS	WATER ELEVATION	576.0
Q 7500	47800 CFS	WATER ELEVATION	576.0
Q 7550	48000 CFS	WATER ELEVATION	576.0
Q 7600	48200 CFS	WATER ELEVATION	576.0
Q 7650	48400 CFS	WATER ELEVATION	576.0
Q 7700	48600 CFS	WATER ELEVATION	576.0
Q 7750	48800 CFS	WATER ELEVATION	576.0
Q 7800	49000 CFS	WATER ELEVATION	576.0
Q 7850	49200 CFS	WATER ELEVATION	576.0
Q 7900	49400 CFS	WATER ELEVATION	576.0
Q 7950	49600 CFS	WATER ELEVATION	576.0
Q 8000	49800 CFS	WATER ELEVATION	576.0
Q 8050	50000 CFS	WATER ELEVATION	576.0
Q 8100	50200 CFS	WATER ELEVATION	576.0
Q 8150	50400 CFS	WATER ELEVATION	576.0
Q 8200	50600 CFS	WATER ELEVATION	576.0
Q 8250	50800 CFS	WATER ELEVATION	576.0
Q 8300	51000 CFS	WATER ELEVATION	576.0
Q 8350	51200 CFS	WATER ELEVATION	576.0
Q 8400	51400 CFS	WATER ELEVATION	576.0
Q 8450	51600 CFS	WATER ELEVATION	576.0
Q 8500	51800 CFS	WATER ELEVATION	576.0
Q 8550	52000 CFS	WATER ELEVATION	576.0
Q 8600	52200 CFS	WATER ELEVATION	576.0
Q 8650	52400 CFS	WATER ELEVATION	576.0
Q 8700	52600 CFS	WATER ELEVATION	576.0
Q 8750	52800 CFS	WATER ELEVATION	576.0
Q 8800	53000 CFS	WATER ELEVATION	576.0
Q 8850	53200 CFS	WATER ELEVATION	576.0
Q 8900	53400 CFS	WATER ELEVATION	576.0
Q 8950	53600 CFS	WATER ELEVATION	576.0
Q 9000	53800 CFS	WATER ELEVATION	576.0
Q 9050	54000 CFS	WATER ELEVATION	576.0
Q 9100	54200 CFS	WATER ELEVATION	576.0
Q 9150	54400 CFS	WATER ELEVATION	576.0
Q 9200	54600 CFS	WATER ELEVATION	576.0
Q 9250	54800 CFS	WATER ELEVATION	576.0
Q 9300	55000 CFS	WATER ELEVATION	576.0
Q 9350	55200 CFS	WATER ELEVATION	576.0
Q 9400	55400 CFS	WATER ELEVATION	576.0
Q 9450	55600 CFS	WATER ELEVATION	576.0
Q 9500	55800 CFS	WATER ELEVATION	576.0
Q 9550	56000 CFS	WATER ELEVATION	576.0
Q 9600	56200 CFS	WATER ELEVATION	576.0
Q 9650	56400 CFS	WATER ELEVATION	576.0
Q 9700	56600 CFS	WATER ELEVATION	576.0
Q 9750	56800 CFS	WATER ELEVATION	576.0
Q 9800	57000 CFS	WATER ELEVATION	576.0
Q 9850	57200 CFS	WATER ELEVATION	576.0
Q 9900	57400 CFS	WATER ELEVATION	576.0
Q 9950	57600 CFS	WATER ELEVATION	576.0
Q 10000	57800 CFS	WATER ELEVATION	576.0

ALLOWABLE STRESSES:	
1. DESIGN LIVE LOAD	AASHTO HS 25
2. ALLOWABLE LOAD FOR SPREAD FOOTINGS ON SOIL	ON LEDGE
3. ALLOWABLE LOAD FOR PILING	2 KSI TYPE HP 14X73 ESTIMATED LENGTH SEE BORING LOGS
4. ALLOWABLE STRESS FOR STRUCTURAL STEEL	AASHTO M 270 GRADE 50W TENSION 27 KSI
5. ALLOWABLE STRESS FOR REINFORCING STEEL	GRADE 60 TENSION 24 KSI COMPRESSION 20 KSI
6. ALLOWABLE STRESS FOR CONCRETE	CLASS A f _c 3.5 KSI f _c 1.4 KSI CLASS B f _c 3.5 KSI f _c 1.4 KSI

TRAFFIC MAINTENANCE:	
1. IS TRAFFIC TO BE MA	