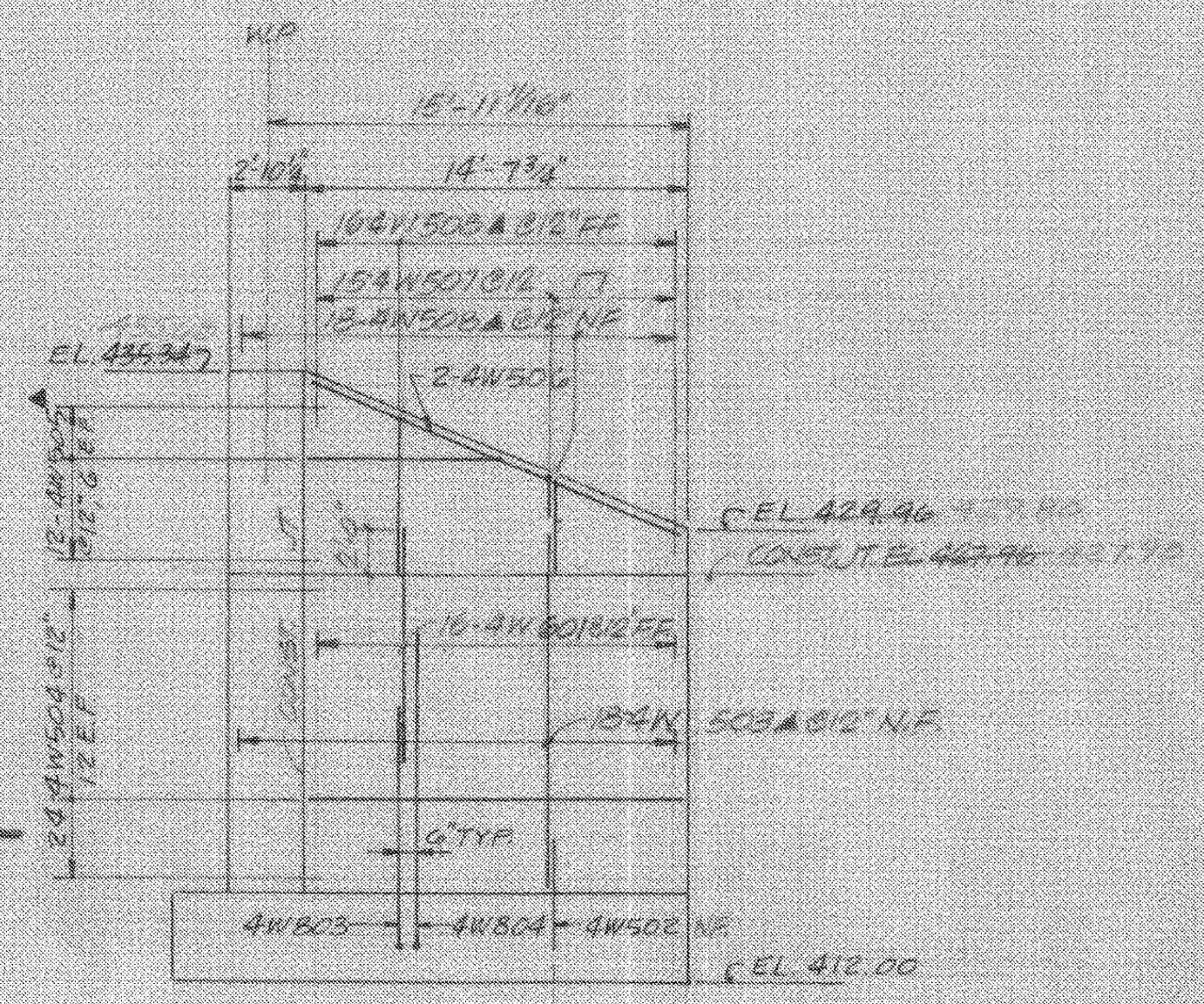
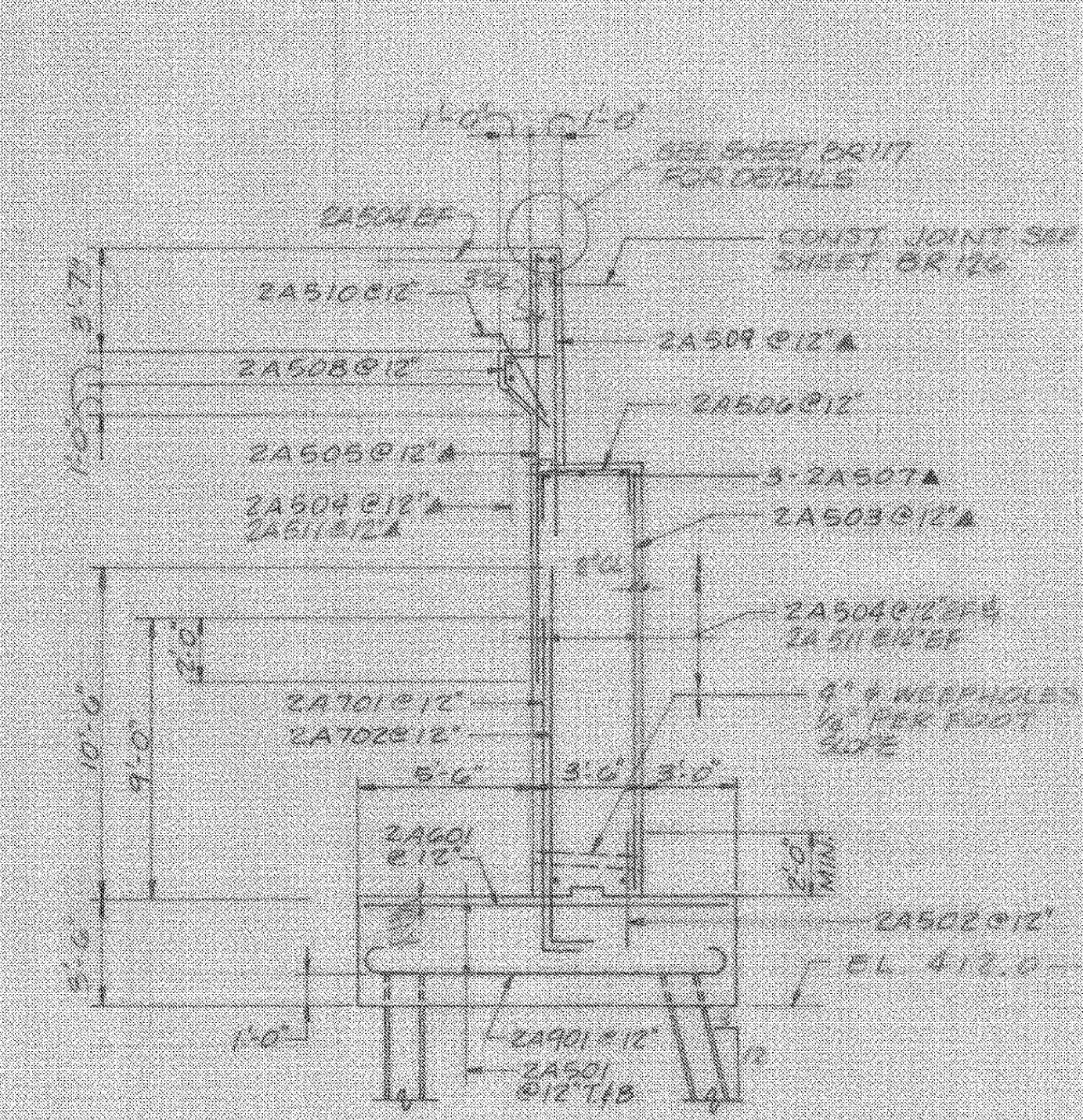


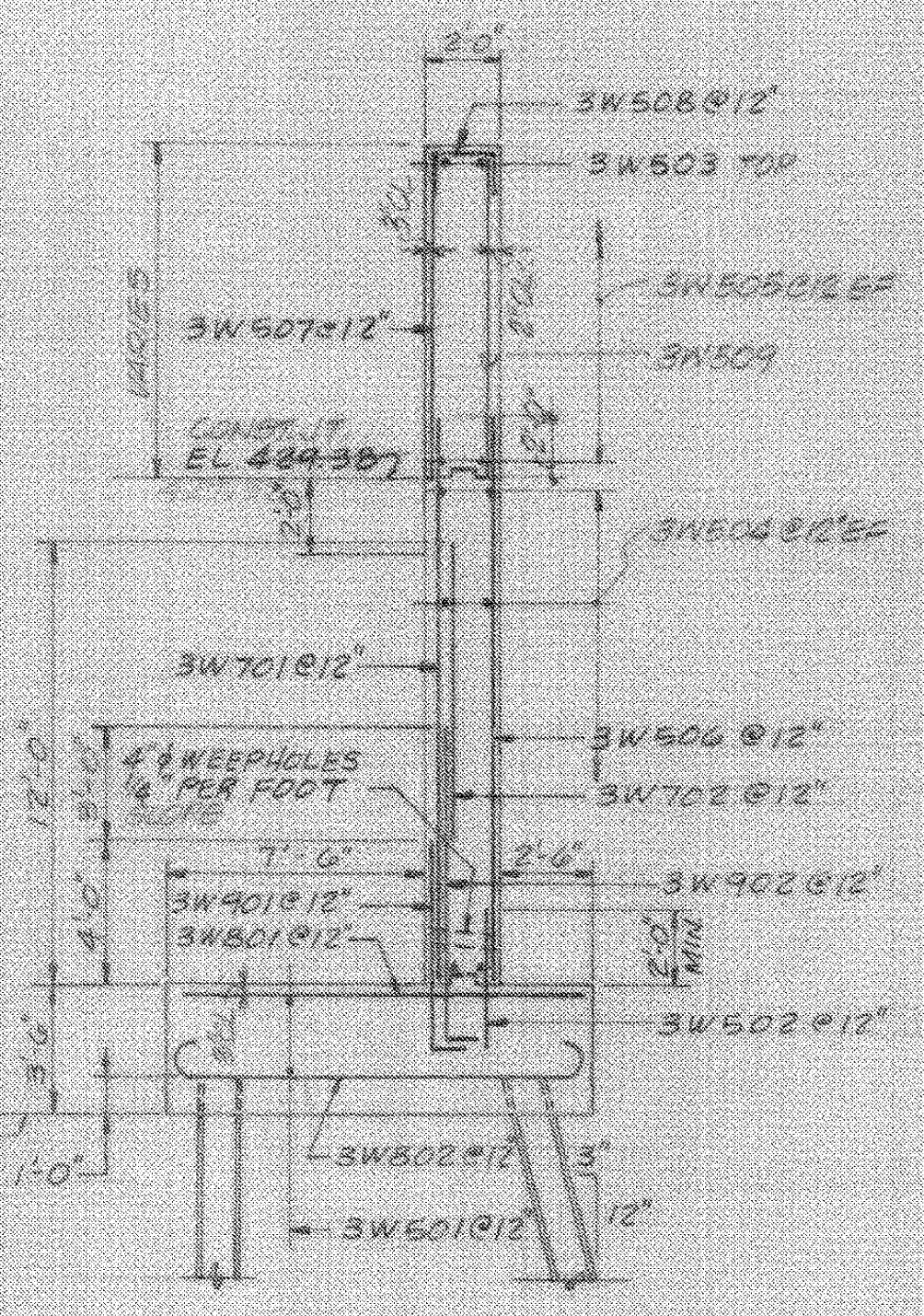
ABUTMENT NO. 2 PILE & FOOTING REINF. PLAN
SCALE: 3/16" = 1'-0"



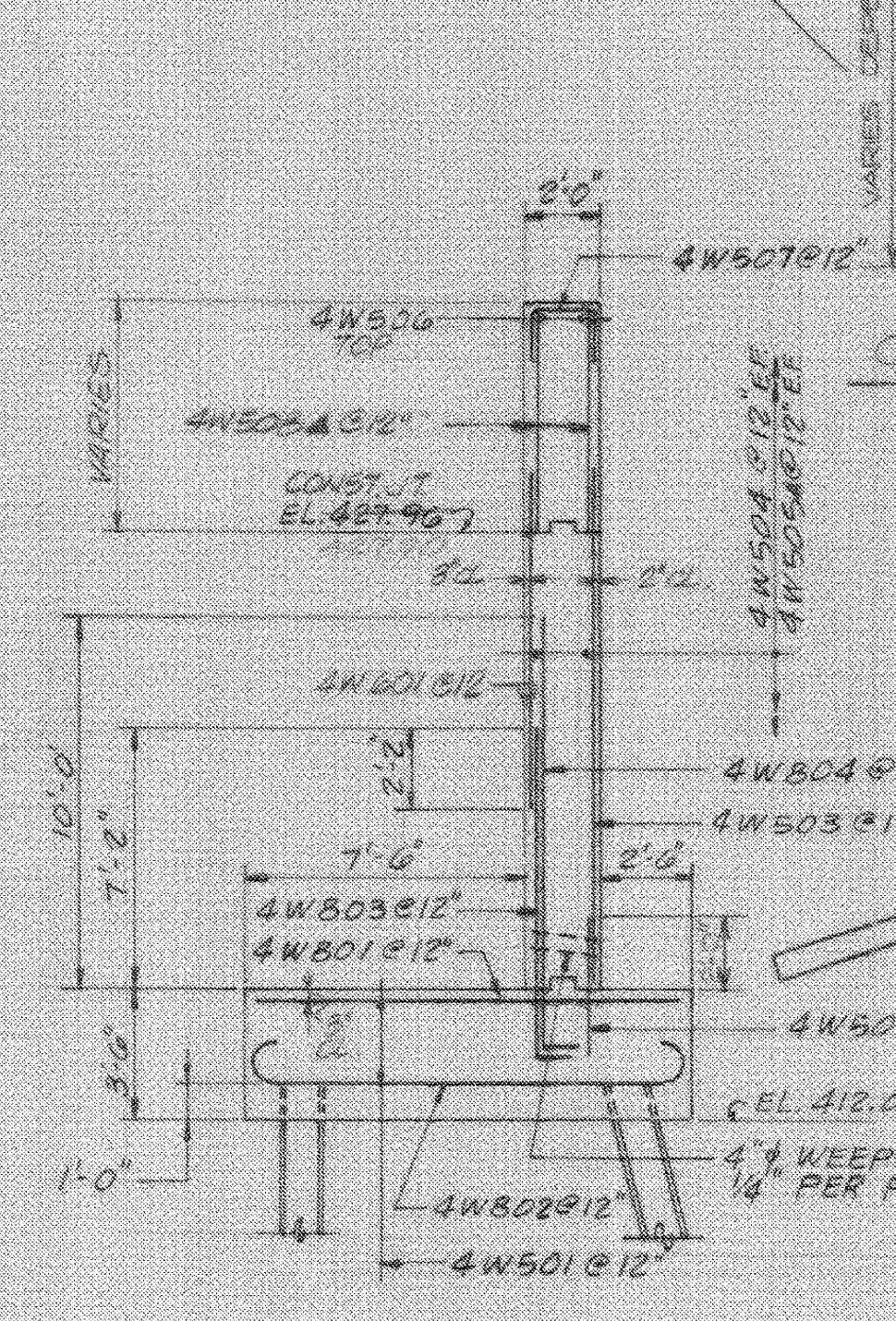
WINGWALL NO. 4 ELEVATION
SCALE: 3/16" = 1'-0"



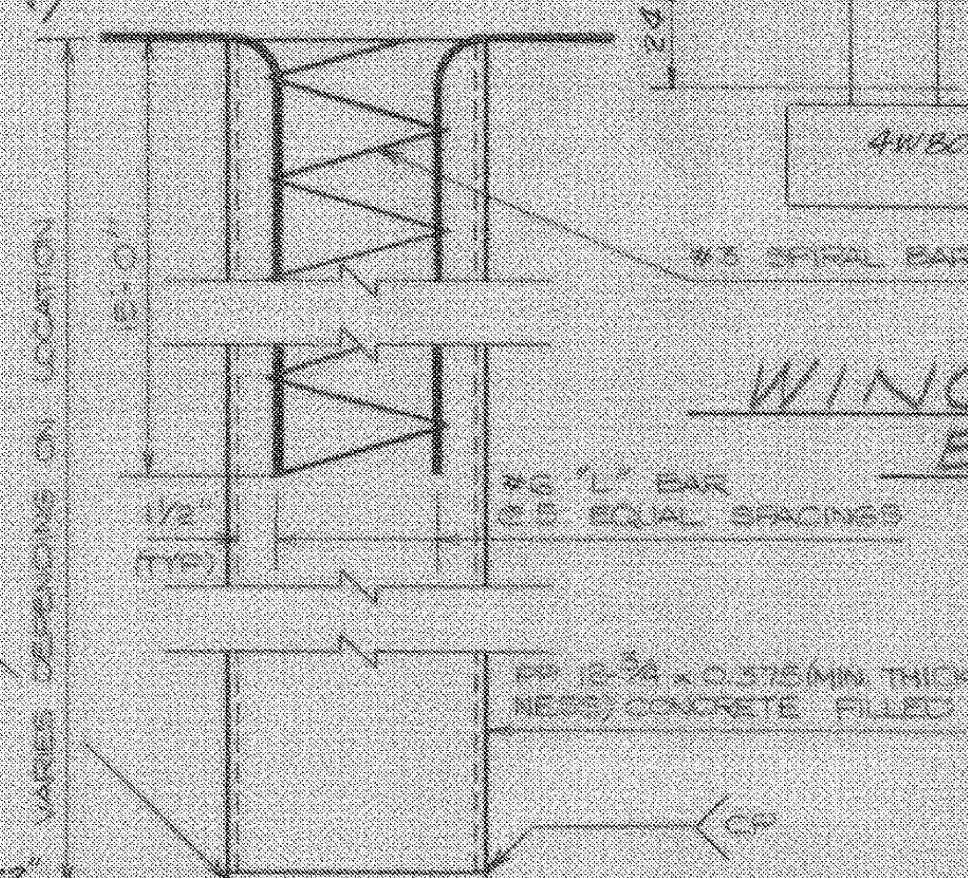
ABUTMENT NO. 2 SECTION
SCALE: 1/4" = 1'-0"



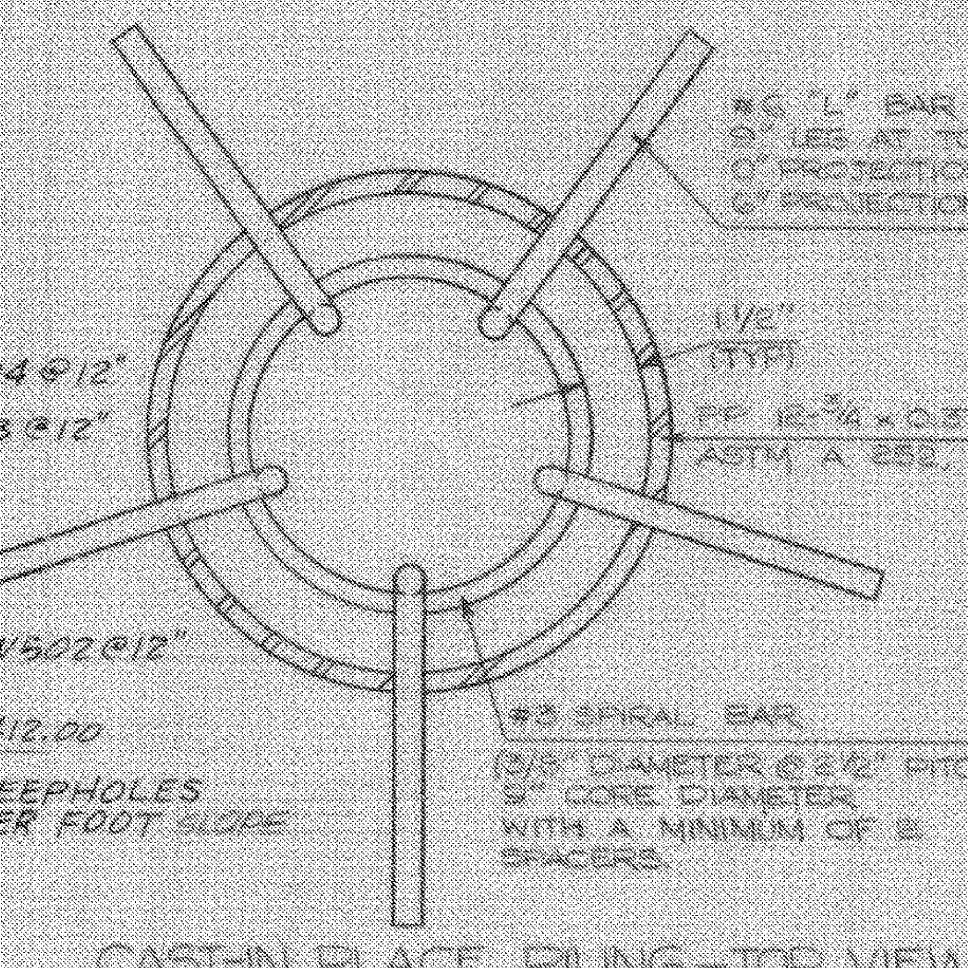
WINGWALL NO. 3 SECTION
SCALE: 1/4" = 1'-0"



WINGWALL NO. 4 SECTION
SCALE: 1/4" = 1'-0"



CAST-IN PLACE PILING - ELEVATION
SCALE: 1/2" = 1'-0"



CAST-IN PLACE PILING - TOP VIEW
SCALE: 3/8" = 1'-0"

- PILE NOTES**
1. ESTIMATED PILE LENGTH TO FT.
 2. ALL PILES TO BE CAST-IN PLACE CONCRETE
 3. DESIGN LOAD - 140 KIPS
 4. POINT ENDS OF ALL PILES SHALL BE CLOSED WITH A 1" THICK PLATE (SEE DETAIL AT LEFT)
 5. I INDICATES VERTICAL PILE (PP 12-3/4" x 0-375" CONCRETE FILLED)
 6. T BATTERED PILE - ARROW INDICATES DIRECTION OF BATTER AT 3:12
- NOTE: SEE BR SHEET 151 FOR COFFERDAM NOTES.

For Reference Only
Waterbury-Moretown
BHF MEMB (12)
Sheet 10 of 28

STATE OF VERMONT AGENCY OF TRANSPORTATION	
Town of WATERBURY-DUXBURY-MORETOWN	Bridge No. 48
Highway No. U.S. RTE. 2	Log Sta. Surv. Sta. 15+61
U.S. RTE. 2 OVER WINOOSKI RIVER	
ABUTMENT NO. 2 PILE PLAN & SECTIONS	
Designed By: CJB	Drawn By: PJT
Checked By: DWK	Date: 9/89
PROJECT WATERBURY-DUXBURY-MORETOWN	
PROJECT NO. BRF-013-4(10)	
I.G.C. info.	
Bridge Sheet No. BR 124	Sheet 10 of 16

BARNES AND JARNIS, INC.
CONSULTING ENGINEERS
BOSTON, MASS.