

PILE NOTES

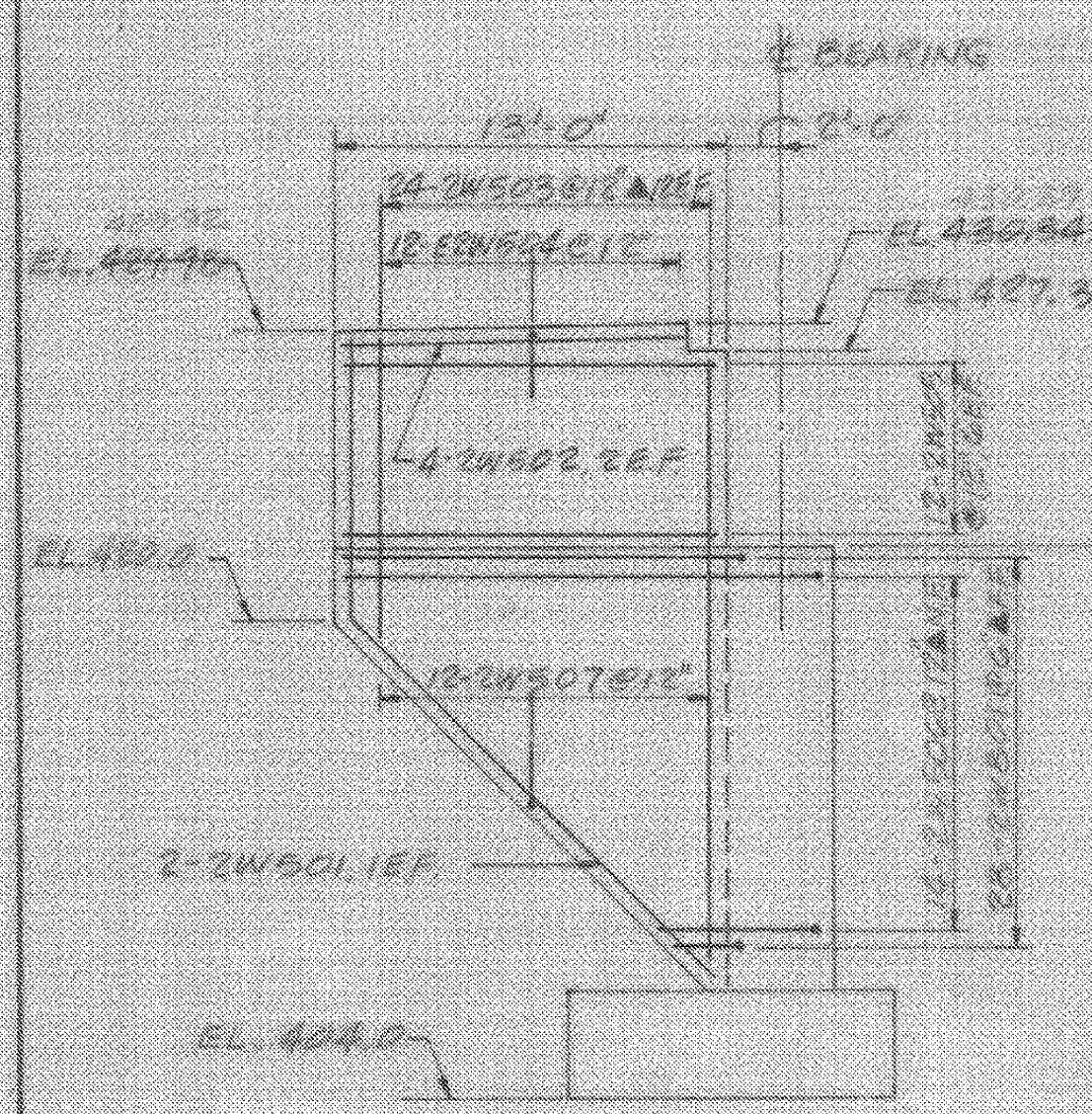
- ESTIMATED PILE LENGTH 45 FT.
- ALL PILES TO BE CAST-IN PLACE CONCRETE
- DESIGN LOAD 140 KIPS
- HEAT ENDS OF ALL PILES SHALL BE CLOSED WITH A 1/2" THICK FLAT PLATE (SEE AREA FOR DETAIL)

↑ INDICATES VERTICAL PILE (IF 6" x 6" CONCRETE FILLER)
 ↓ BUTTERED PILE (ARROW INDICATES DIRECTION OF BUTTER AT 8:12)

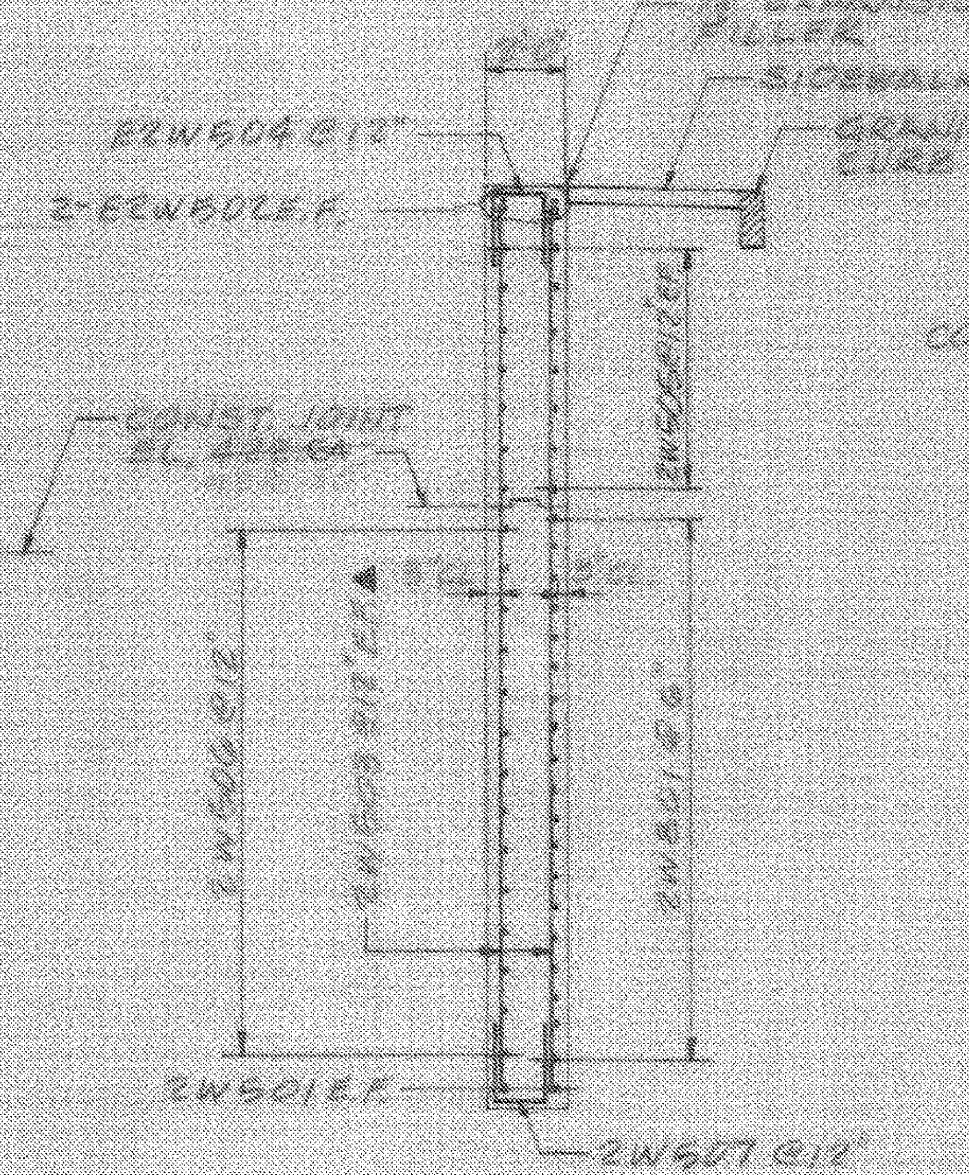
COFFERDAM NOTES

- COFFERDAM DESIGN SHOULD BE BASED ON ORDINARY HIGH WATER ELEVATION OF 419.1. MINIMUM TOP OF COFFERDAM ELEVATION SHALL BE 421.1.
- LIMITS OF COFFERDAM SHALL BE A MINIMUM OF 2.0' OUTSIDE OF PILES OR AS REQUIRED TO CLEAR EXISTING PILES AT THE REQUIRED EMBEDMENT DEPTH.
- A CONCRETE SEAL SHALL BE PROVIDED WITH A THICKNESS AS DETERMINED FROM THE DESIGN. ORDINARY HIGH WATER ELEVATION OF 419.1.

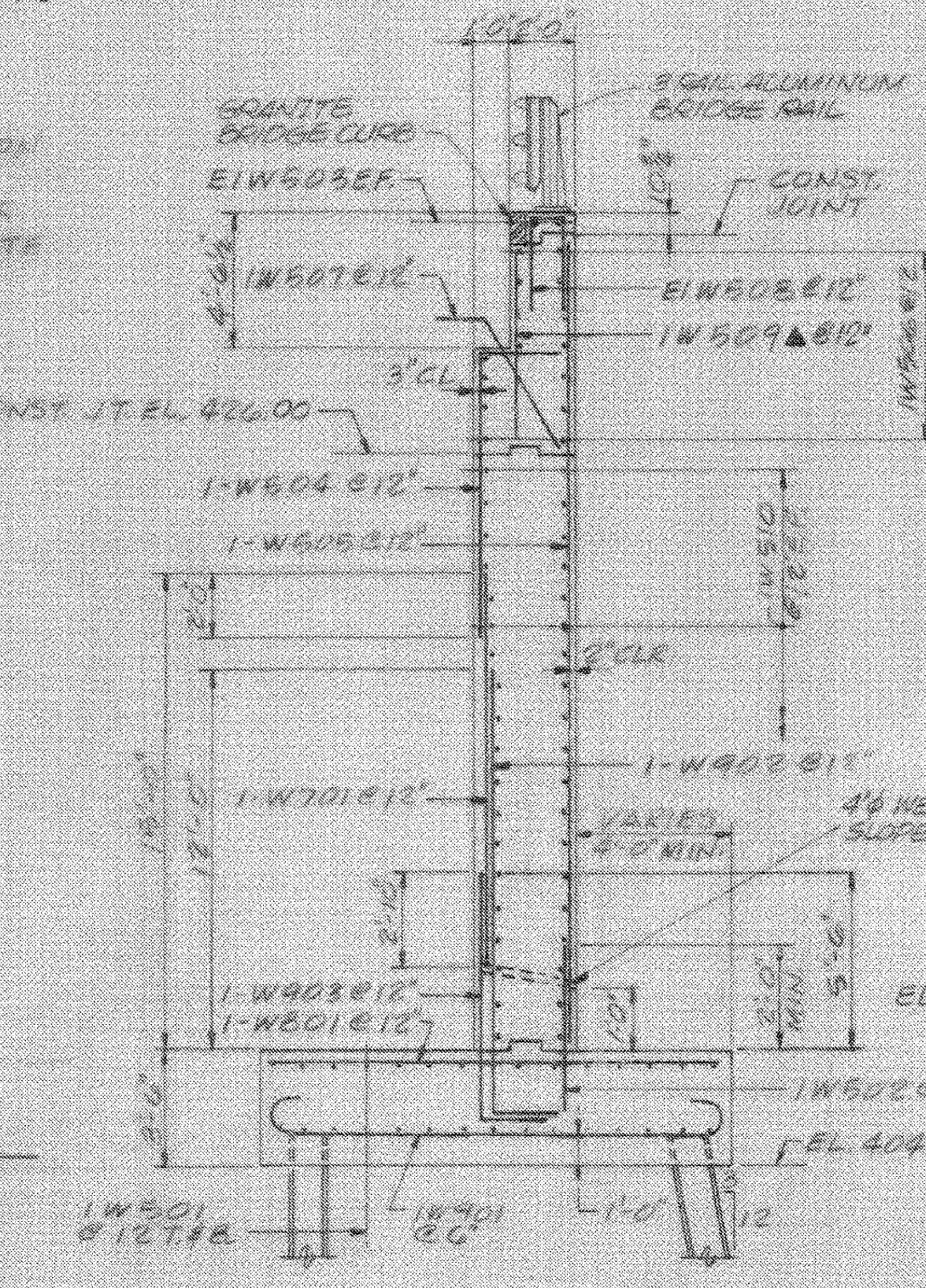
ABUTMENT NO. 1 PILE & FOOTING REINF. PLAN
 SCALE 3/4" = 1'-0"



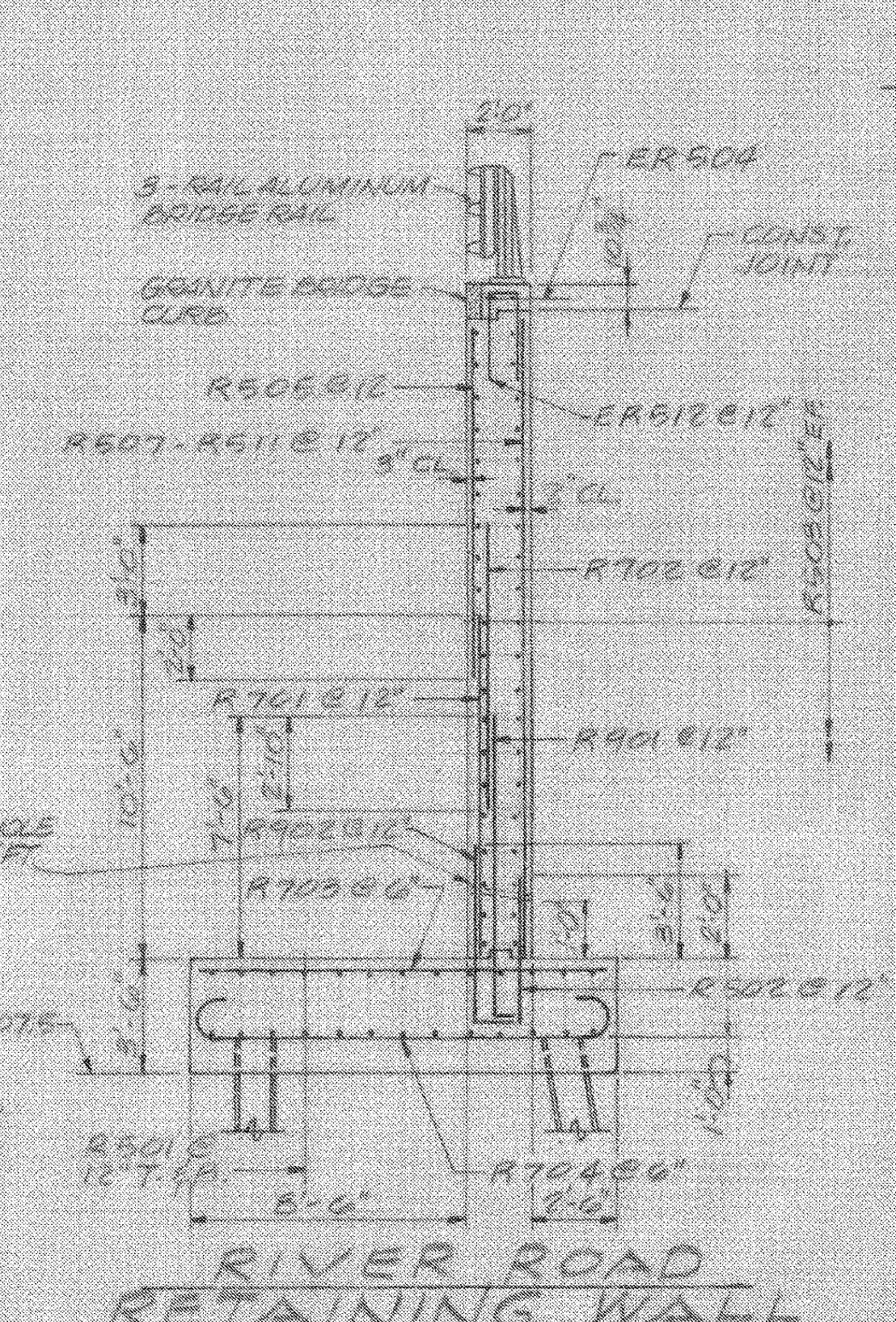
WINGWALL NO. 2 ELEVATION
 SCALE 3/4" = 1'-0"



WINGWALL NO. 2 SECTION
 SCALE 3/4" = 1'-0"



WINGWALL NO. 1 SECTION
 SCALE 3/4" = 1'-0"



RIVER ROAD RETAINING WALL
 SCALE 1/4" = 1'-0"

For Reference Only
 Waterbury-Moretown
 BHF MEMB (12)
 Sheet 14 of 28

BARNES AND JARNIS, INC.
 CONSULTING ENGINEERS
 BOSTON, MASS.

STATE OF VERMONT	
AGENCY OF TRANSPORTATION	
Town of WATERBURY-DUXBURY-MORETOWN	Bridge No. 48
Highway No. U.S. RTE. 2	Log Sta. Surv. Sta. 15+61
U.S. RTE. 2 OVER WINOOSKI RIVER	
ABUTMENT NO. 1 PILE PLAN & SECTIONS	
Designed By C.J.B.	Drawn By R.J.L.
Checked By DWG	Bridge Design Supervisor DWG
Date 9/89	Date 9/90
PROJECT WATERBURY-DUXBURY-MORETOWN	PROJECT NO. BRF-013-4(10)
162 hto.	
Bridge Sheet No. BR 121	Sheet 65 of 162