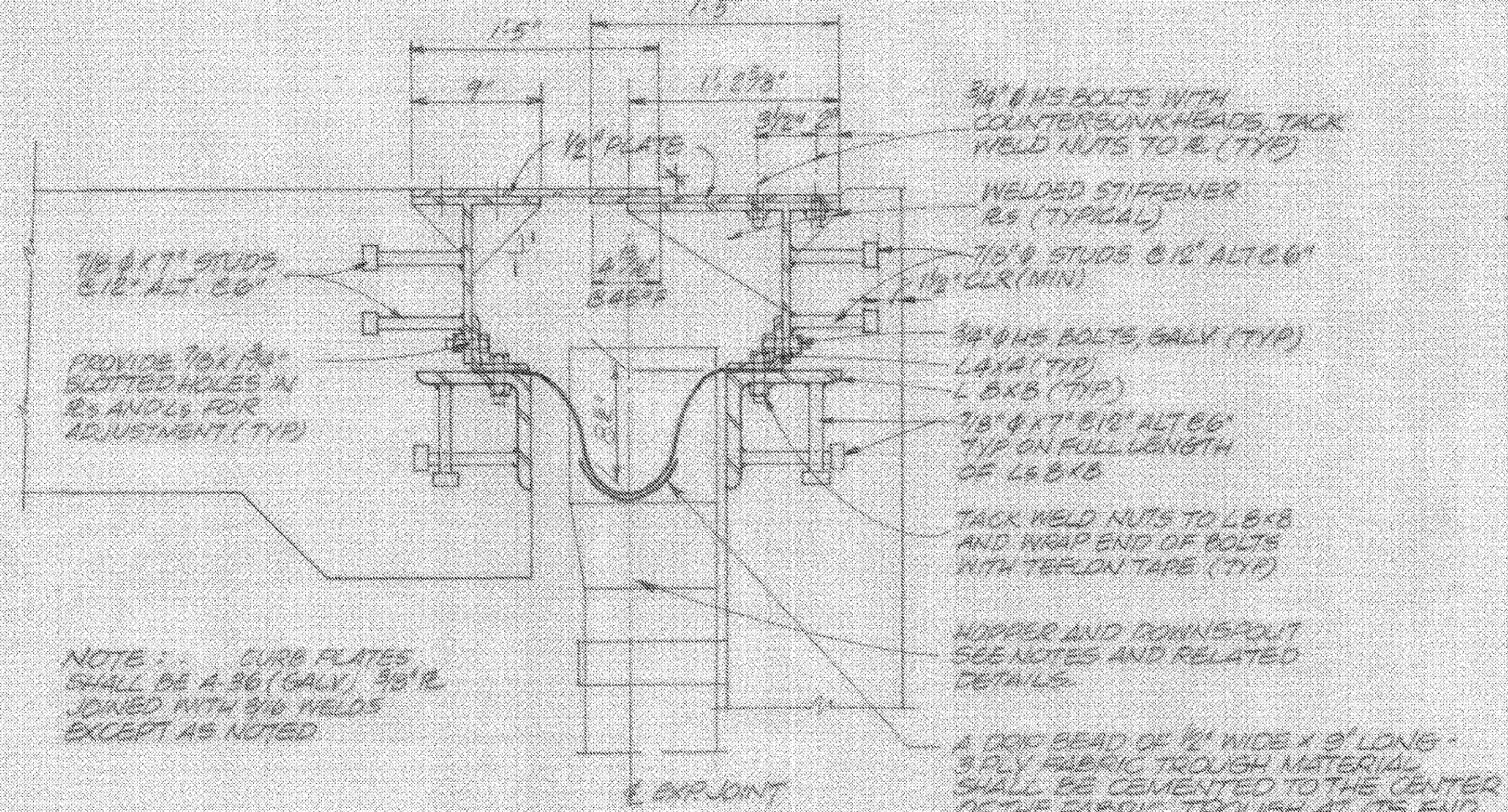
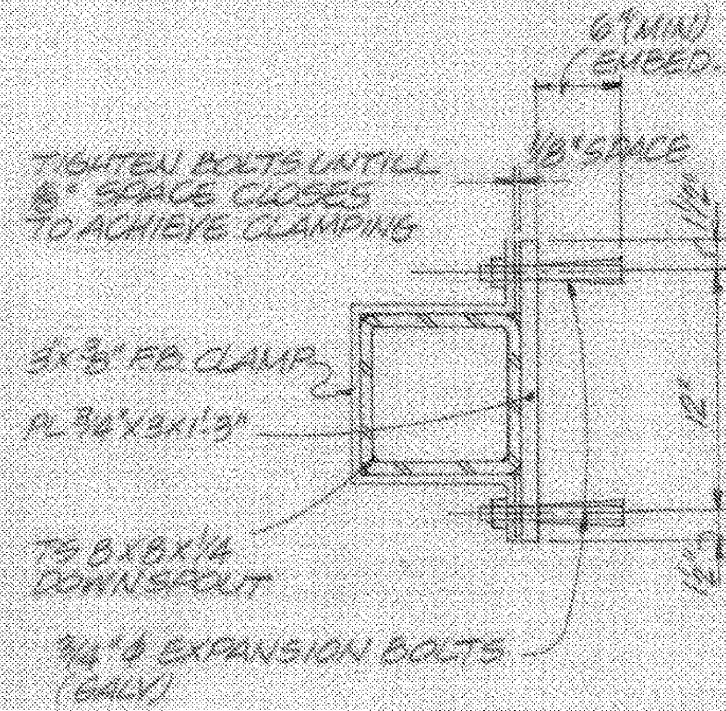


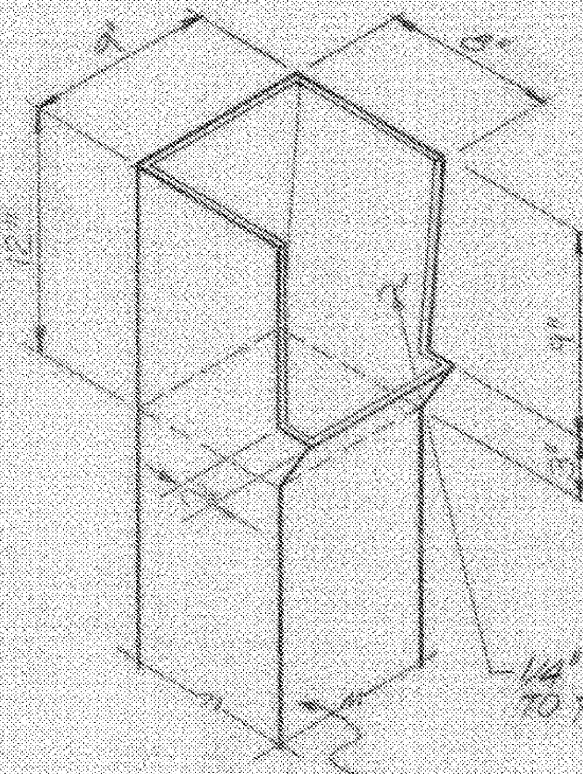
SECTION C-C
SCALE 1/8" = 1'-0"



SECTION D-D
SCALE 1/8" = 1'-0"



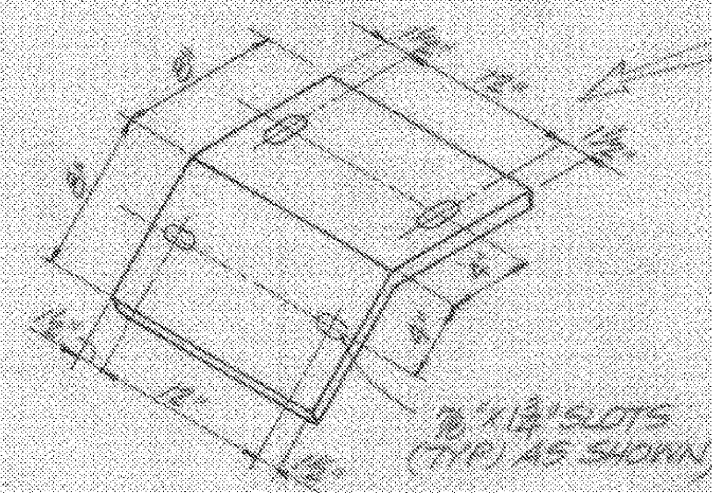
BACKWALL CLAMP DETAIL
SCALE 1/2" = 1'-0"



HOPPER DETAIL
SCALE 1/2" = 1'-0"

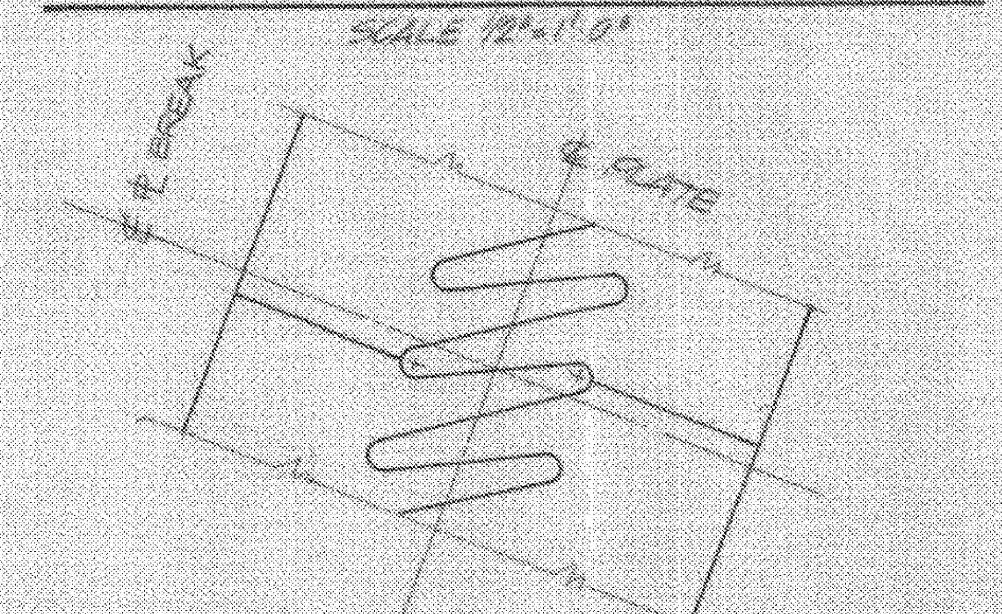
DOWNSPOUT NOTES

1. STRUCTURAL TUBING SHALL CONFORM TO ASTM A500 OR 501 GALVANIZED IN ACCORDANCE WITH ASTM A103.
2. FLAT-BAR CLAMPS AND PLATES SHALL BE GALVANIZED OR METALLIZED AS PER SECTION 791.05.
3. DOWNSPOUT AND ACCESSORIES TO BE PAID FOR AS STRUCTURAL STEEL.

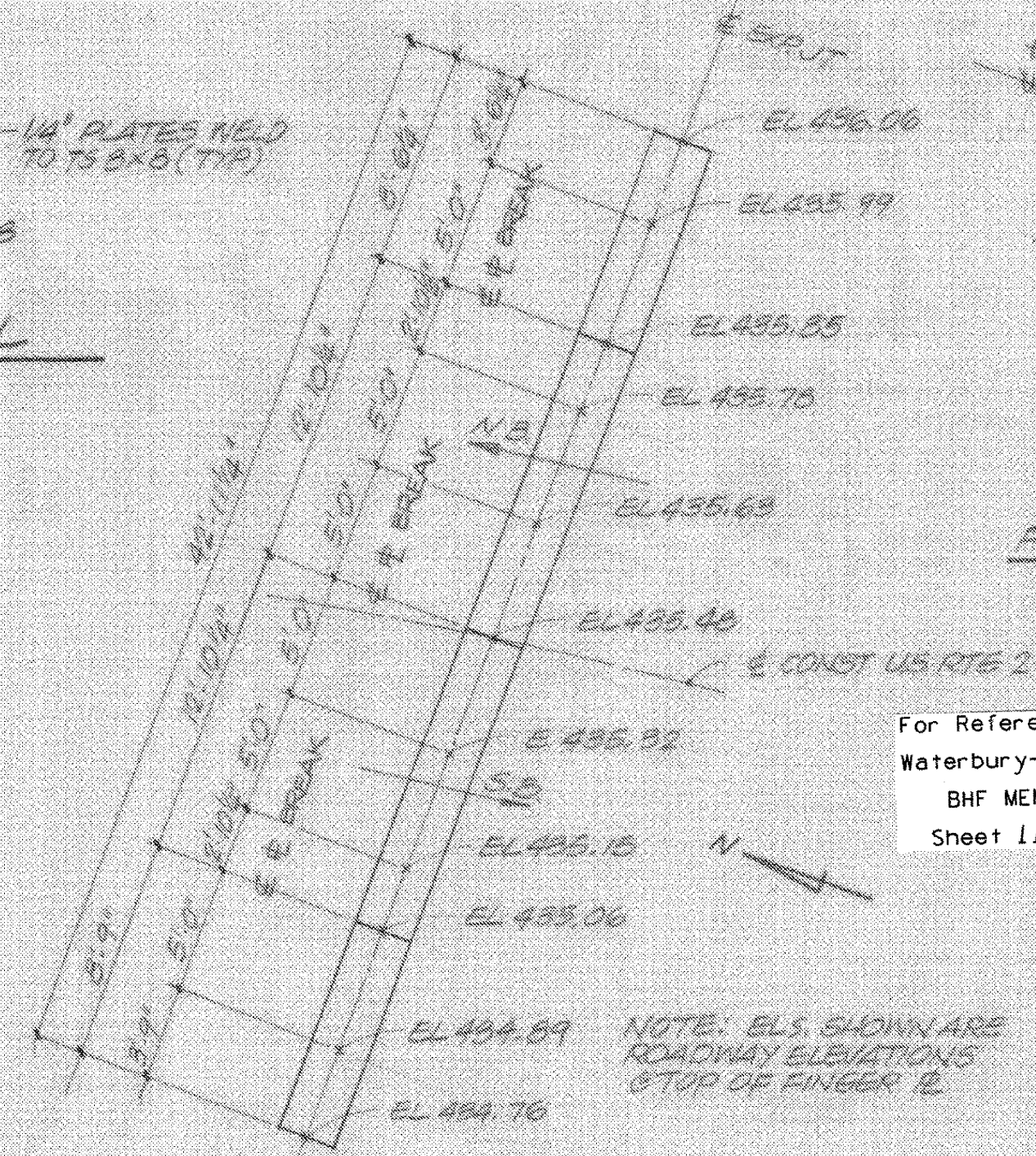


BENT PLATE
SCALE 1/2" = 1'-0"

SECTION AT HOPPER/DOWN-SPOUT ASSEMBLY



FINGER B SECTION BREAK DETAIL
SCALE 1/2" = 1'-0"



FINGER B SETTING DETAIL
SCALE 9/16" = 1'-0"

NOTE: SEE EXPIJT PLAN AND RELATED DETAILS ON SH DR 116

For Reference Only
Waterbury-Moretown
BHF MEMB (12)
Sheet 11 of 28

REVISED - HOPPER DETAIL - FINGER DOWN TROUGH 1-13-91 YG:OT		BARNES AND JARNIS, INC. CONSULTING ENGINEERS BOSTON, MASS.	
STATE OF VERMONT AGENCY OF TRANSPORTATION			
Town of WATERBURY-DUXBURY-MORETOWN Highway No. U.S. RTE. 2		Bridge No. 48 Loc. Sta. Surv. Sta. 15+61	
U.S. RTE. 2 OVER WINOOSKI RIVER FINGER JOINT DETAILS			
Designed by LJC Checked by DWC Date 6/90		Drawn by GAT Bridge Design Supervisor DWC Date 9/90	
PROJECT WATERBURY-DUXBURY-MORETOWN L&C info.		PROJECT NO. BRF 013 4 (10)	
Bridge Sheet No. BR117		Sheet 61 of 162	