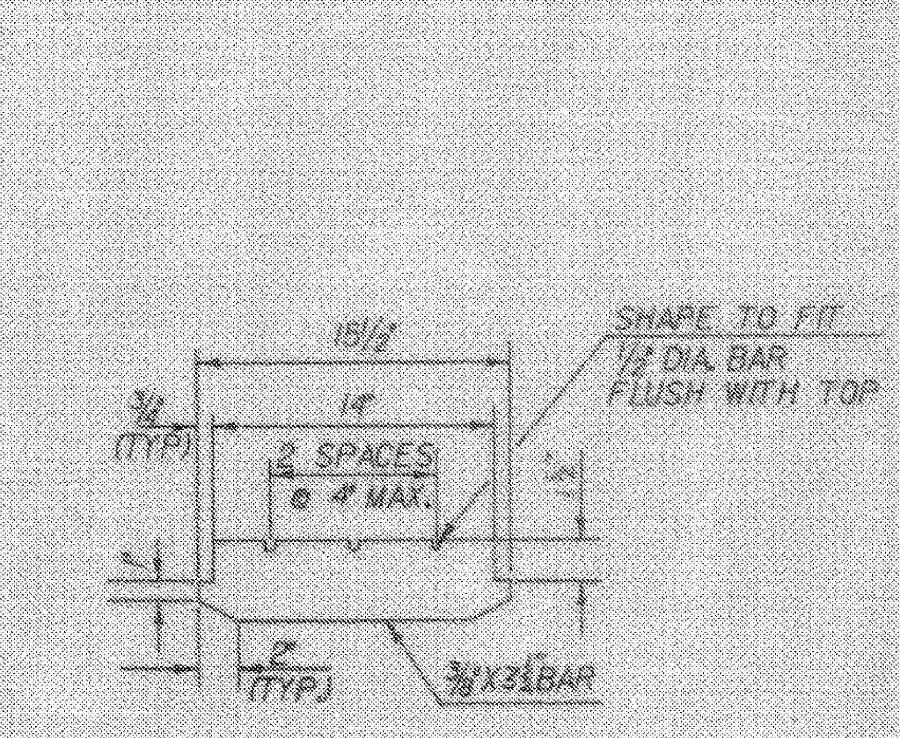


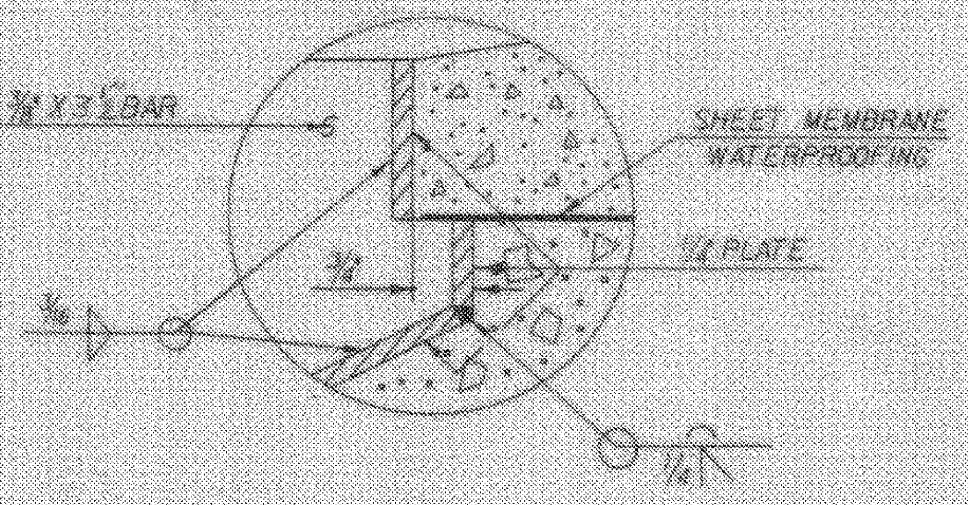
- SCUPPER NOTES**
1. STRUCTURAL TUBING SHALL CONFORM TO ASTM A500 OR A501. ALL OTHERS SHALL BE TO ASTM A86. THE WHOLE SCUPPER ASSEMBLY SHALL BE GALVANIZED AFTER FABRICATION IN ACCORDANCE WITH ASTM A152.
  2. ALL SURFACES OF SCUPPER WHICH WILL CONTACT CONCRETE SHALL BE COATED WITH EPOXY BONDING COMPOUND IN ACCORDANCE WITH SECTION 719. THE COST OF THIS WORK SHALL BE INCLUDED WITH THE UNIT PRICE BID FOR CONCRETE CLASS 4.
  3. SCUPPERS SHALL BE PAID FOR AS STRUCTURAL STEEL.
  4. SPECIAL CARE SHALL BE TAKEN TO SEAL WATER PROOFING MEMBRANE AROUND SCUPPERS SIMILAR TO METHOD USED AT CURB.
  5. THE TOP SURFACE OF SCUPPER SHALL BE SLOPED TO MATCH ROADWAY SLOPE AND GRADE.
  6. ANY GALVANIZED AREAS THAT ARE WELDED IN THE FIELD MUST BE COATED WITH ZINC RICH PRIMER AFTERTWARDS ACCORDING TO VERMONT SPECIFICATION 708.01(2).

- CURB & RAILING NOTES**
1. THE 2" CURB SHALL BE PLACED IN 20'0" SECTIONS AS PER DWS BR 125. CURB JOINT DETAILS, PLACEMENT DETAILS FOR THE CURB SHALL BE SUBMITTED TO THE BRIDGE RAILING FABRICATOR BY THE CONTRACTOR.
  2. BRIDGE RAIL POST SHALL BE 1 1/2" MINIMUM FROM CURB CONSTRUCTION JOINTS (UNLESS OTHERWISE NOTED).
  3. FOR CURB JOINT DETAILS AND GRANITE CURB DETAILS SEE BR 125.
  4. FOR BRIDGE RAILING DETAILS SEE BR 121-BR 129.
  5. FOR APPROACH RAIL (2 RAIL ALUMINUM) SEE BR 129.
  6. FOR CURB DETAILS @ SOUTH END OF BRIDGE SEE BR 114.
  7. FOR CONTINUATION OF CURB & RAIL ON RIVER ROAD SEE BR 129.

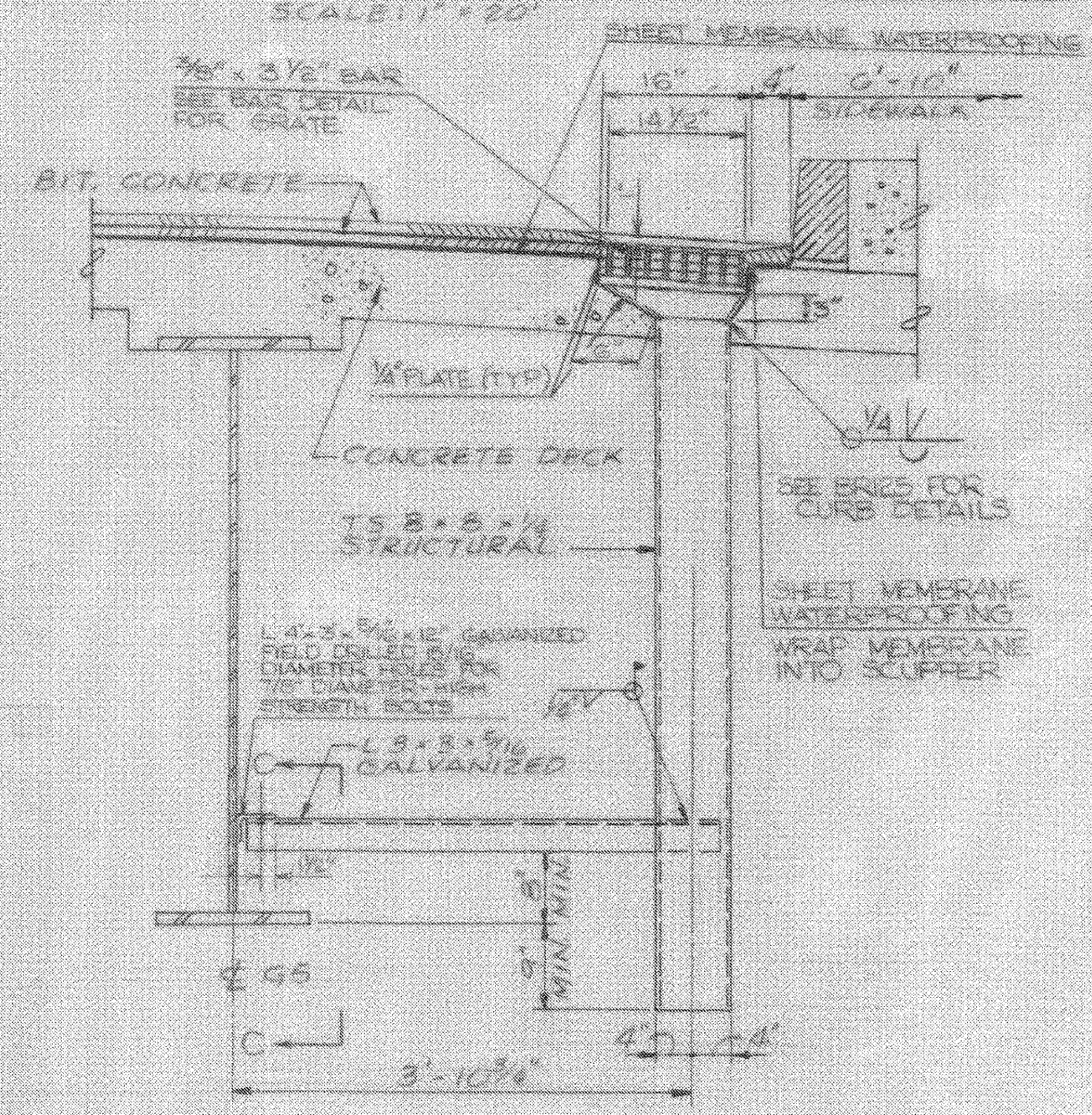
**CURB, RAILING & SCUPPER PLAN**  
SCALE: 1" = 20'



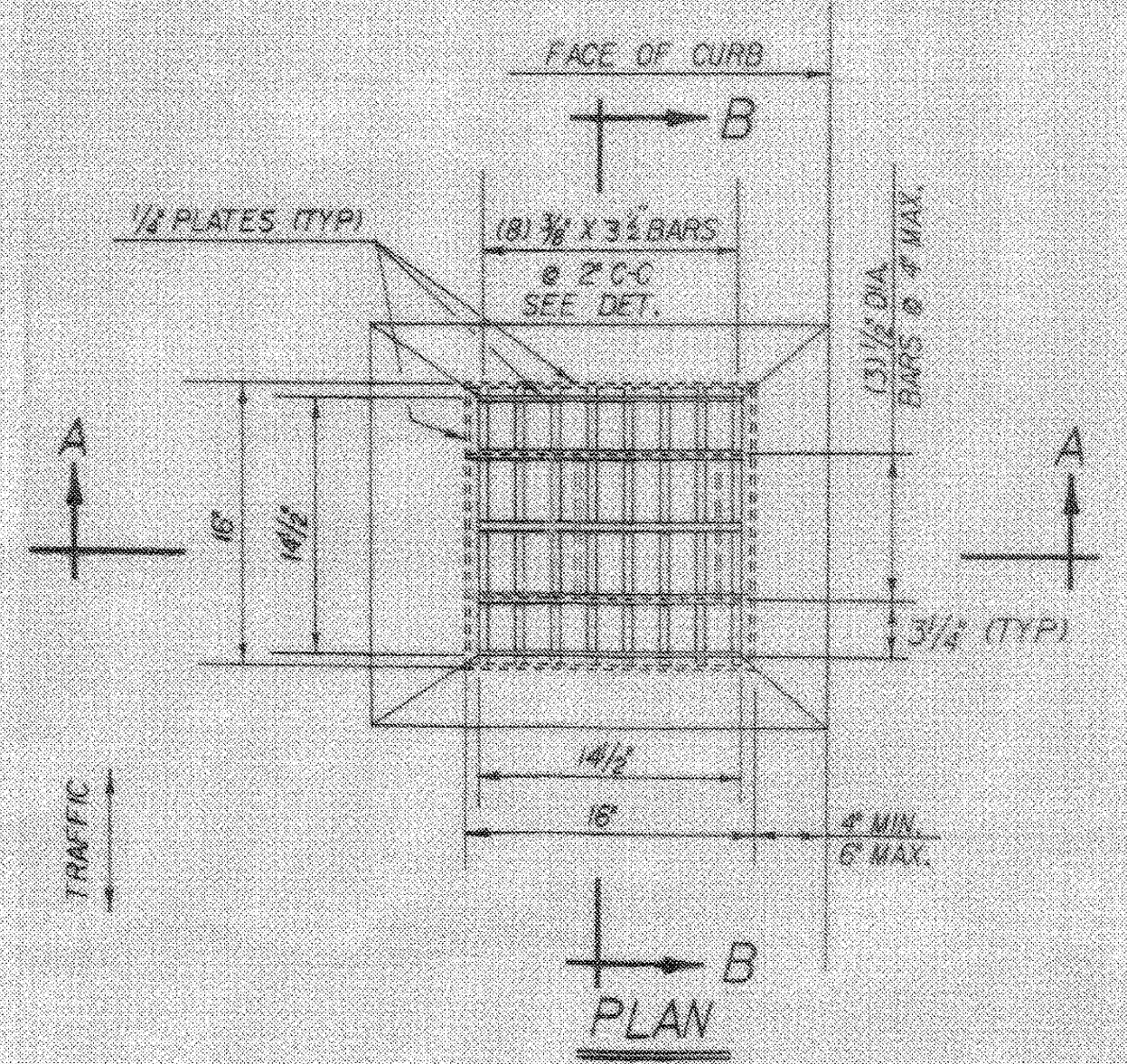
**BAR DETAIL FOR GRATE**  
SCALE: 1/2" = 1'-0"



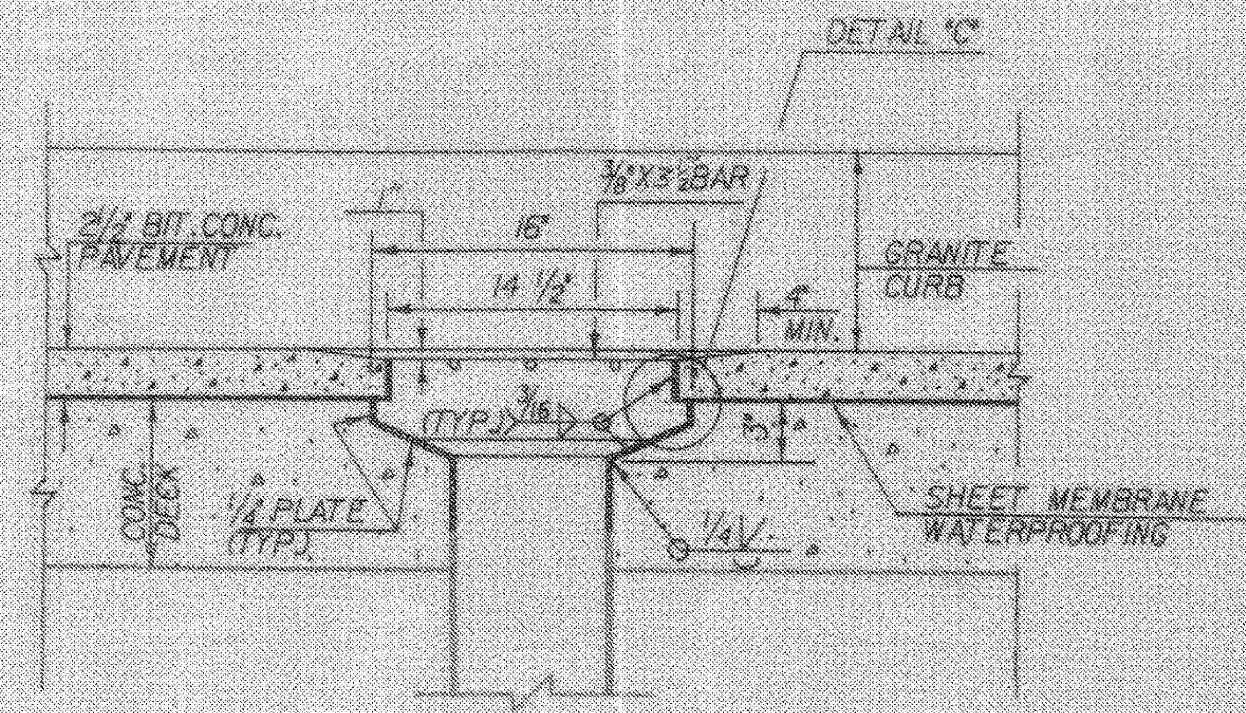
**DETAIL C**



**SECTION B-B**  
SCALE: 1" = 1'-0"



**SECTION C-C**  
SCALE: 3/8" = 1'-0"



**SECTION B-B**  
SCALE: 1/2" = 1'-0"

REVISED MAY 14, 1991, KSC

**BARNES AND JARNIS, INC.**  
CONSULTING ENGINEERS  
BOSTON, MASS.

**STATE OF VERMONT**  
**AGENCY OF TRANSPORTATION**

Town Of WATERBURY-DUXBURY-MORETOWN	Bridge No. 48
Highway No. U.S. RTE. 2	Log Sta. SURV. STA. 15+61
U.S. RTE 2 OVER WINOOSKI RIVER CURB, RAILING & SCUPPER LAYOUTS	
Designed By CJB	Drawn By RJL
Checked By LJC	Date 9/89
PROJECT WATERBURY-DUXBURY-MORETOWN	
PROJECT NO. BRF-013-4(10)	
L&C info.	
Bridge Sheet No. BR 109	Sheet 53 of 142

For Reference Only  
Waterbury-Moretown  
BHF MEMB (12)  
Sheet 53 of 28

BR-4