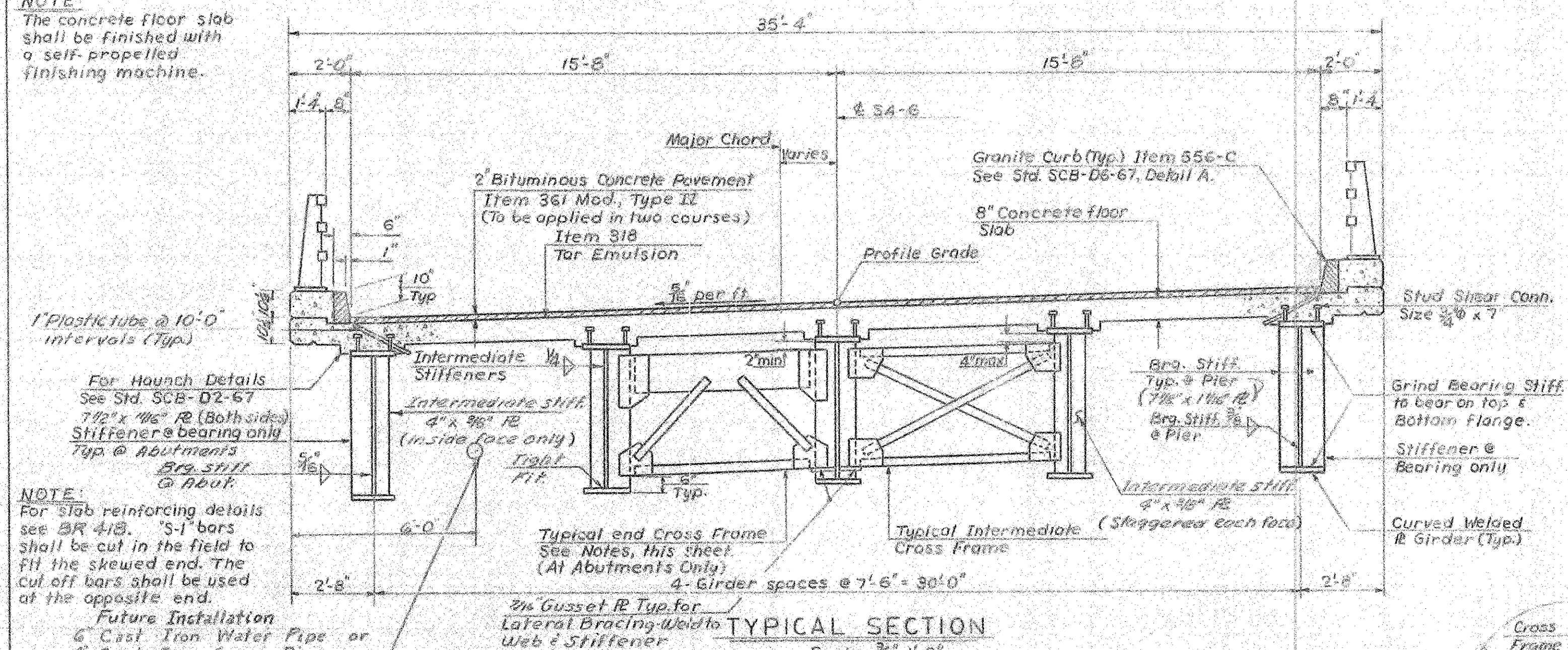


NOTE:
The concrete floor slab shall be finished with a self-propelled finishing machine.

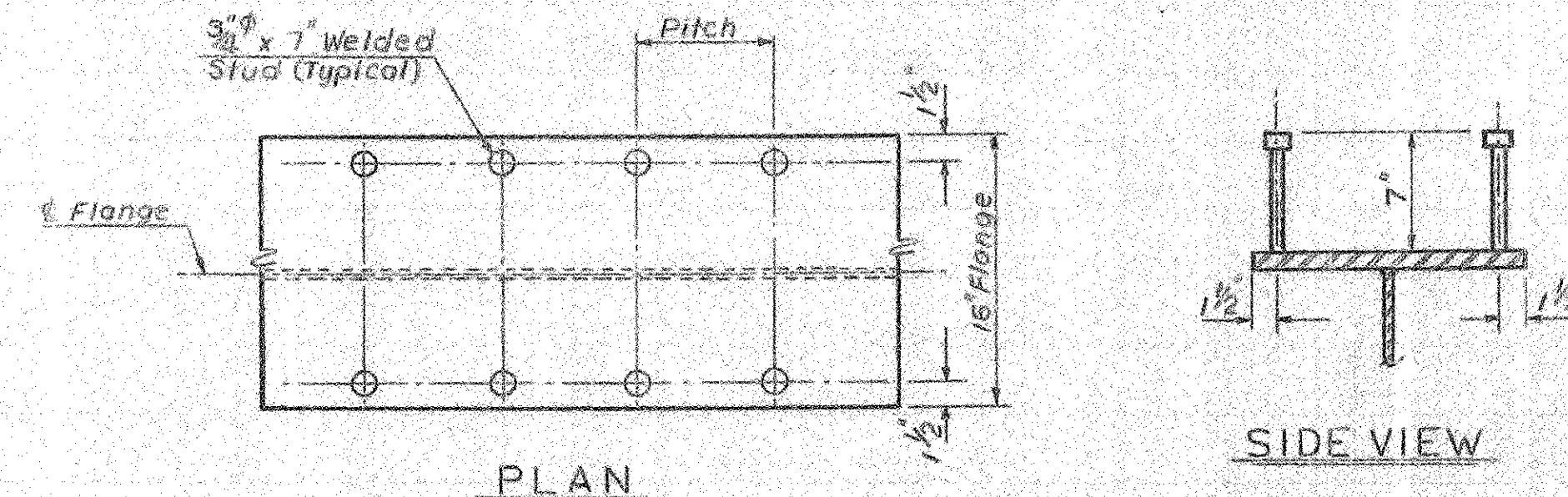


NOTE:
For slab reinforcing details see BR 413. 'S'-bars shall be cut in the field to fit the skewed end. The cut off bars shall be used at the opposite end.

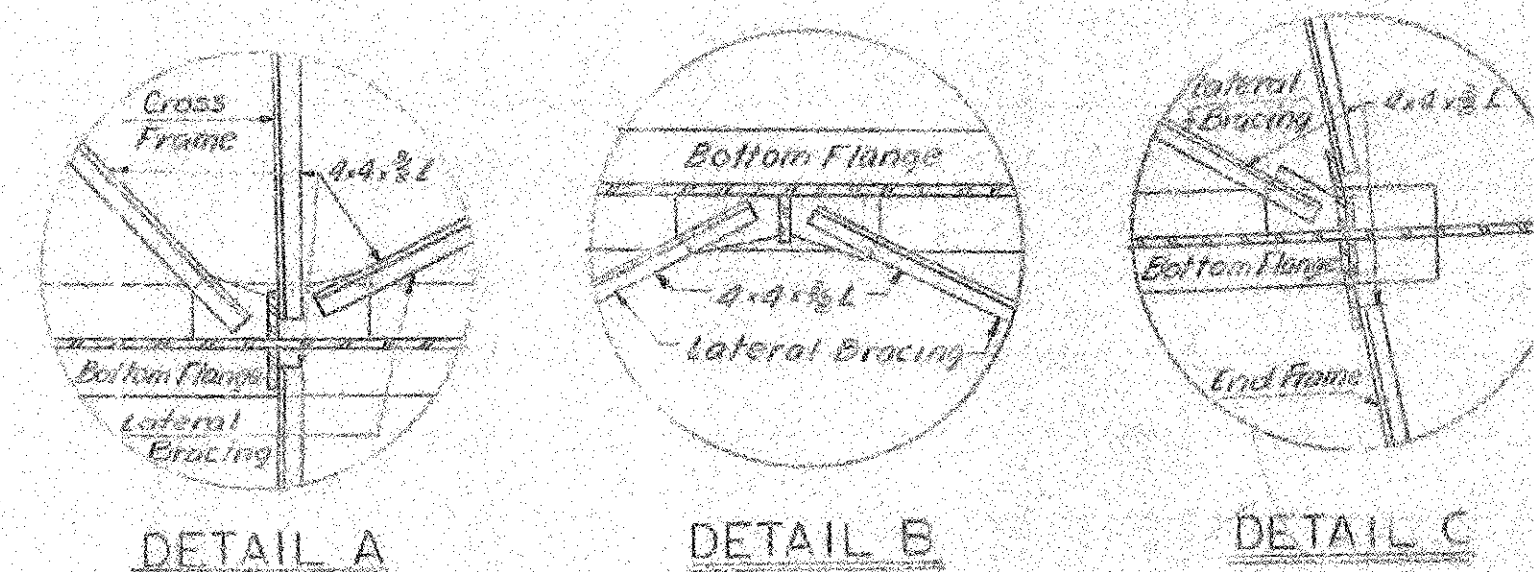
Future Installation
6" Cast Iron Water Pipe or
4" Cast Iron Sewer Pipe.
For Details see BR 401

GIRDER	RADIUS	LENGTH SPAN No.1	LENGTH SPAN No.2	TOTAL LENGTH
G1	3,804.72'	117'-0 1/2"	117'-0 1/2"	234'-0 1/4"
G2	3,812.22'	117'-0 1/2"	117'-0"	234'-0 1/2"
G3	3,819.72'	117'-0"	117'-0"	234'-0"
G4	3,827.22'	116'-11 1/2"	116'-11 1/2"	233'-11 1/4"
G5	3,834.72'	116'-11 1/2"	116'-11 1/2"	233'-11 1/2"

GIRDER LENGTHS-CENTER TO CENTER OF BEARING ALONG CENTERLINE OF GIRDER.



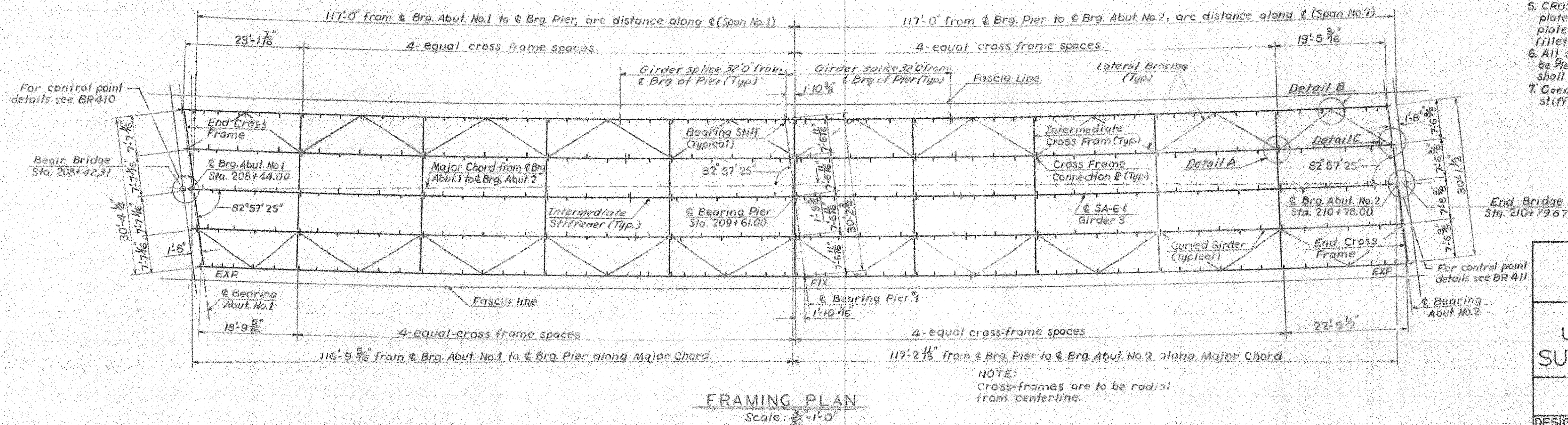
SHEAR CONNECTOR
No Scale



LATERAL BRACING DETAILS
1/8" Scale

NOTES

1. For General Notes, see BR 401.
2. For Joint Details, see BR 403.
3. For Beam Haunch Details, see SCB-D2-67.
4. All studs are to be 3/8" x 7" welded studs. If 1/2" studs are used, increase the spacing shown for 3/8" studs by 50%.
5. CROSS FRAME NOTES: All gusset connection plates shall be 7/16" plates. Gusset plates shall be welded to stiffeners with a 3/16" fillet weld. All angles shall be L4x4x3/8 angle.
6. All shop connections for cross frames shall be 3/16" fillet welds. All field connections shall be 1/2" high strength bolts.
7. Connection plates shall be bolted to stiffeners.



FRAMING PLAN
Scale: 1/8" = 1'-0"

NOTE:
Cross-frames are to be radial from centerline.

**BRIDGE D4
FOR REFERENCE ONLY**
SHEET 14 OF 14

VERMONT
STATE HIGHWAY DEPARTMENT
TOWN OF FAIR HAVEN
U.S. ROUTE 4
SA-6 RELOCATED OVER
U.S. ROUTE 4 RELOCATED
SUPERSTRUCTURE DETAILS
MCFARLAND-JOHNSON
CONSULTING ENGINEERS
BINGHAMTON, NEW YORK
DESIGNED T.E.C. CHECKED E.C. DATE 10-20-67
DRAWN R.D. IN CHARGE H.G.C. SCALE AS NOTED
PROJECT NO. FO 20-1 (4) SH 1/67 OF 532

Revisions: Added Note No. 7. R.P.G. 5-26-69