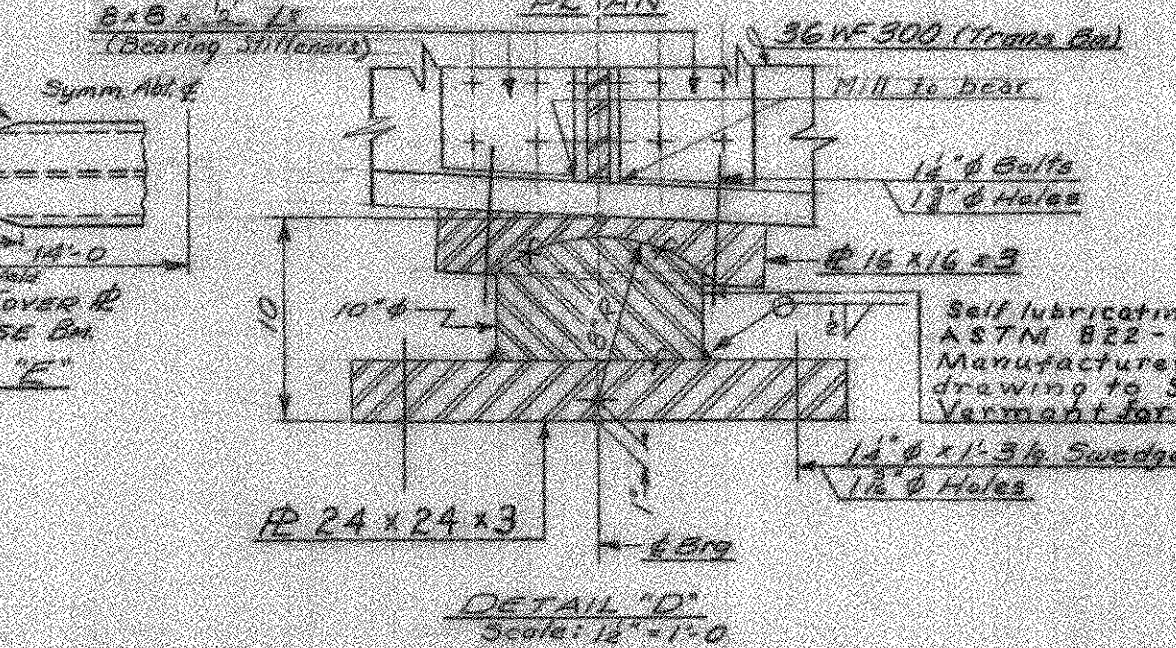
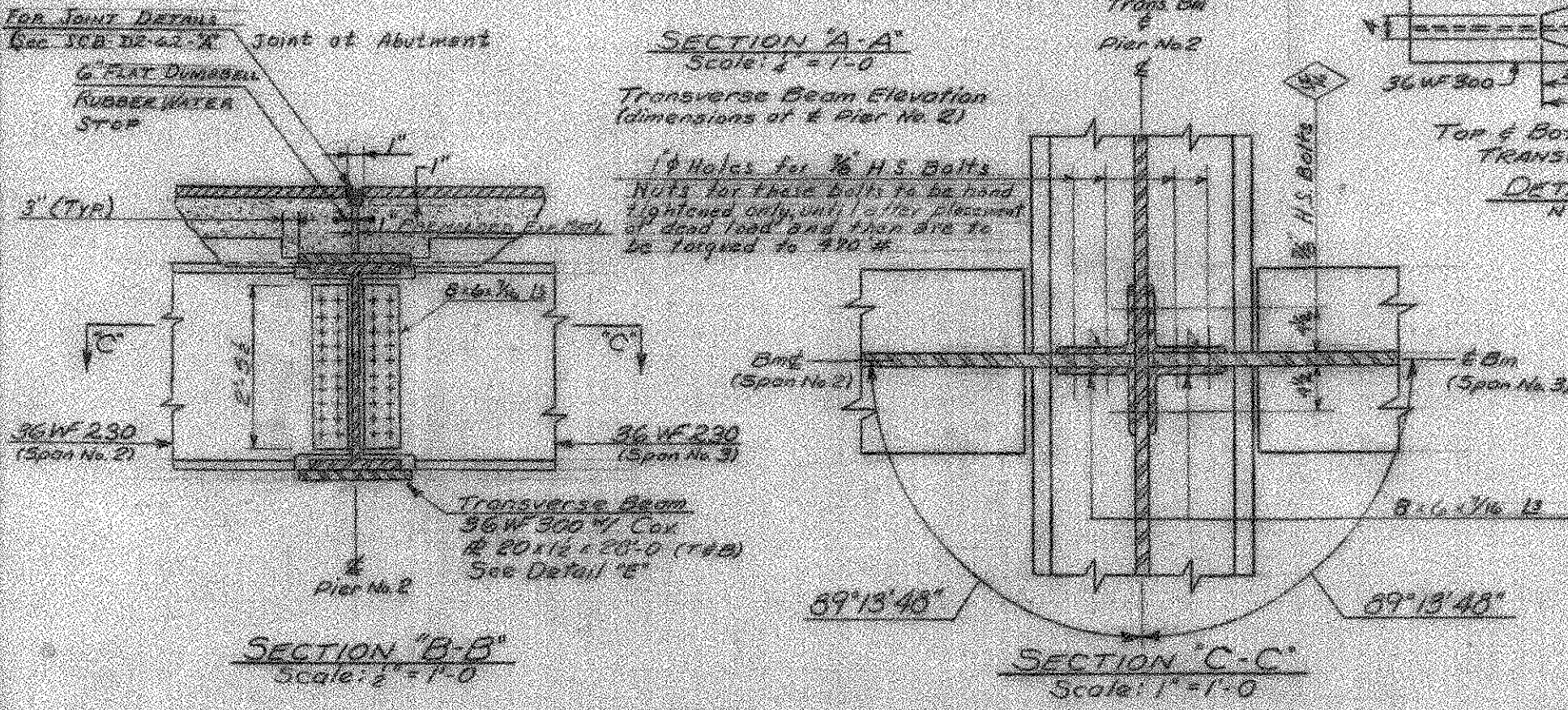
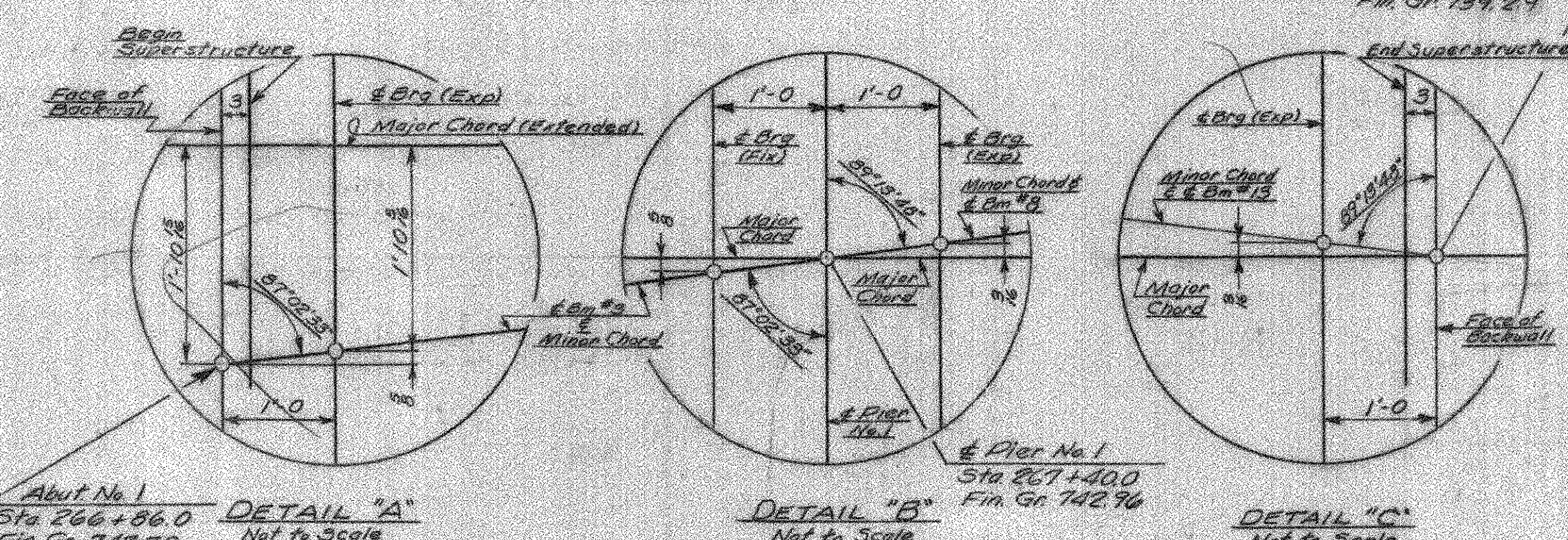
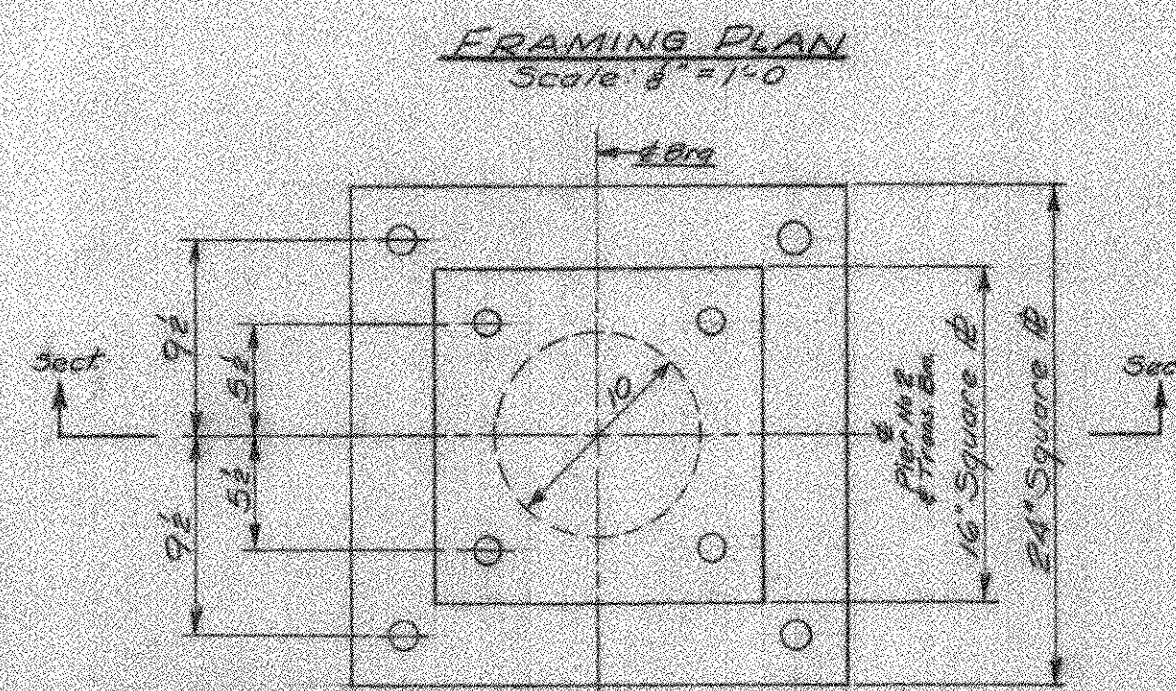
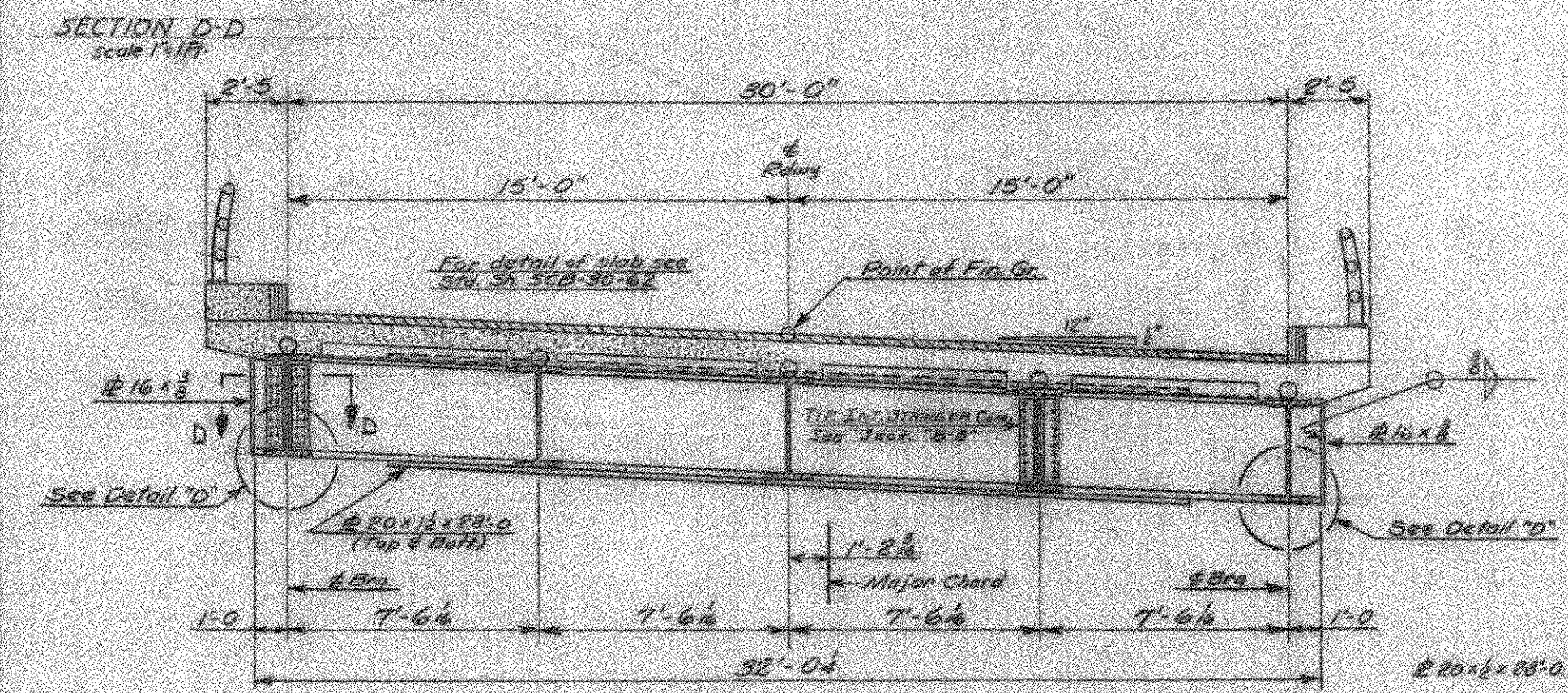


BRIDGE 54
FOR REFERENCE ONLY
SHEET 11 OF 14



- NOTES:**
- The center beam in each span is at the minor chord of that span. All beams in each span are parallel.
 - All diaphragms to be 13 L 427 and parallel to the abutments and piers. Diaphragms at abutments and Pier No. 1 as per Std. Sh. SCB-D742. 'D'. Note: no diaphragms at Pier No. 2. Interior diaphragms as per Std. Sh. SCB-D742, det. D & E.
 - Additional notes on "Plan & Elevation" sheet.
 - Payment for valley water stops to be included in unit price bid for Concrete Class A-A.

SUPERSTRUCTURE QUANTITIES

ITEM NO.	ITEM	UNIT	NET	FINAL
515	Tar Emulsion for Bridge Floors	GAL	310	
361-B	Bituminous Concrete Pavement	Ton	65	*
401-A	Concrete Class AA, Mod.	CY	250	250
402	Reinforcing Steel	L.B.	(See Schedule)	
403	Spiral Reinforcement (6320 lbs)	L.B.	1	1
404-A	Structural Steel	L.B.	322,207	322,207
442	Removal of Present Superstr.	L.S.	1	1
596-C	Granite Bridge Curb Mod.	L.F.	457	457
572	Bridge Railing	L.F.	195	195
372-A	Joint Sealer Hot Applied	L.F.	152	*
373	Rubber Joint Material	L.F.	124	124
*	Roadway Items			

CONTRACT #2
BR 203 of 23A

STATE OF VERMONT
DEPARTMENT OF HIGHWAYS

TOWN OF DORSET

ROUTE No. US 7 LOG STA. 264+70

SUPERSTRUCTURE DETAILS
EMERALD LAKE OVERPASS (Sta. 2682)

SCALE As Shown

SURVEYED BY JENETT

DRAWN BY AHS CHECKED BY RAIK

PROJECT No. FO19-2(12)

SHEET 35 OF 102