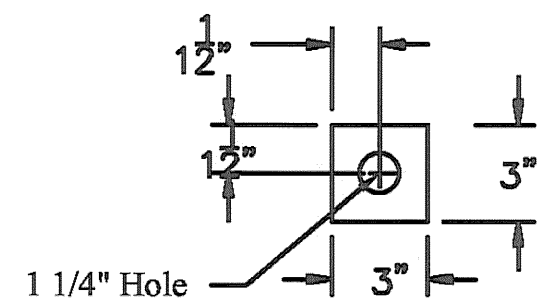
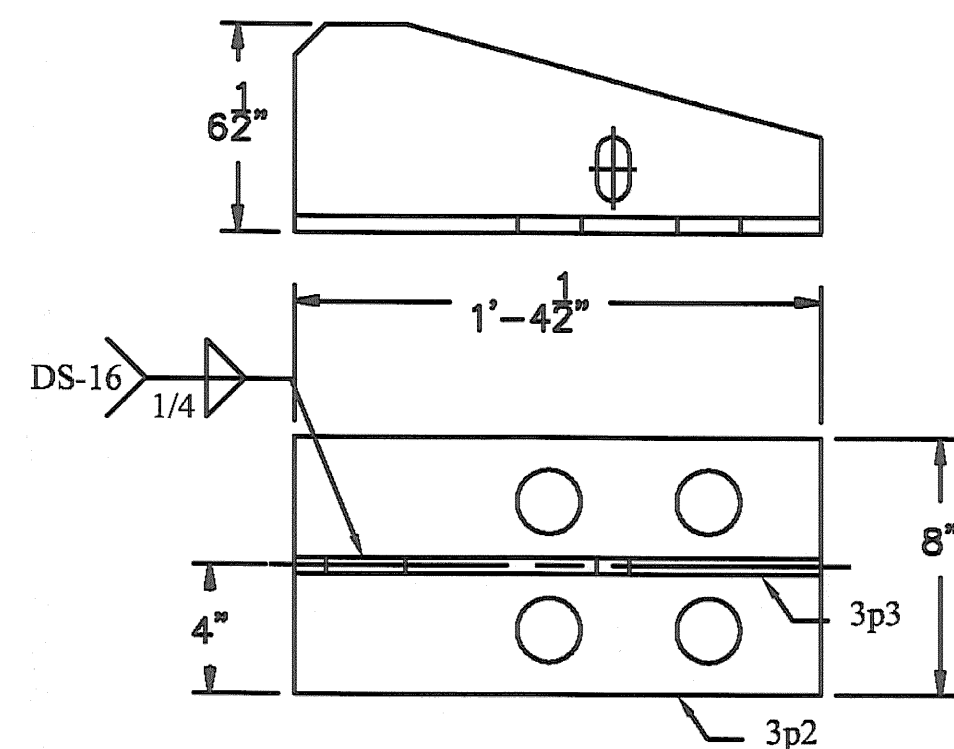


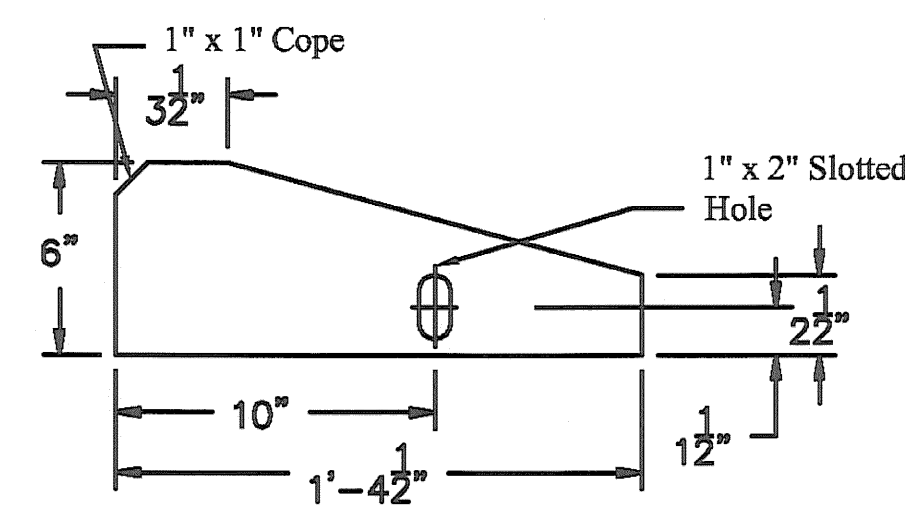
20 REQ'D - DETAIL 3p2



160 REQ'D - DETAIL 3b1

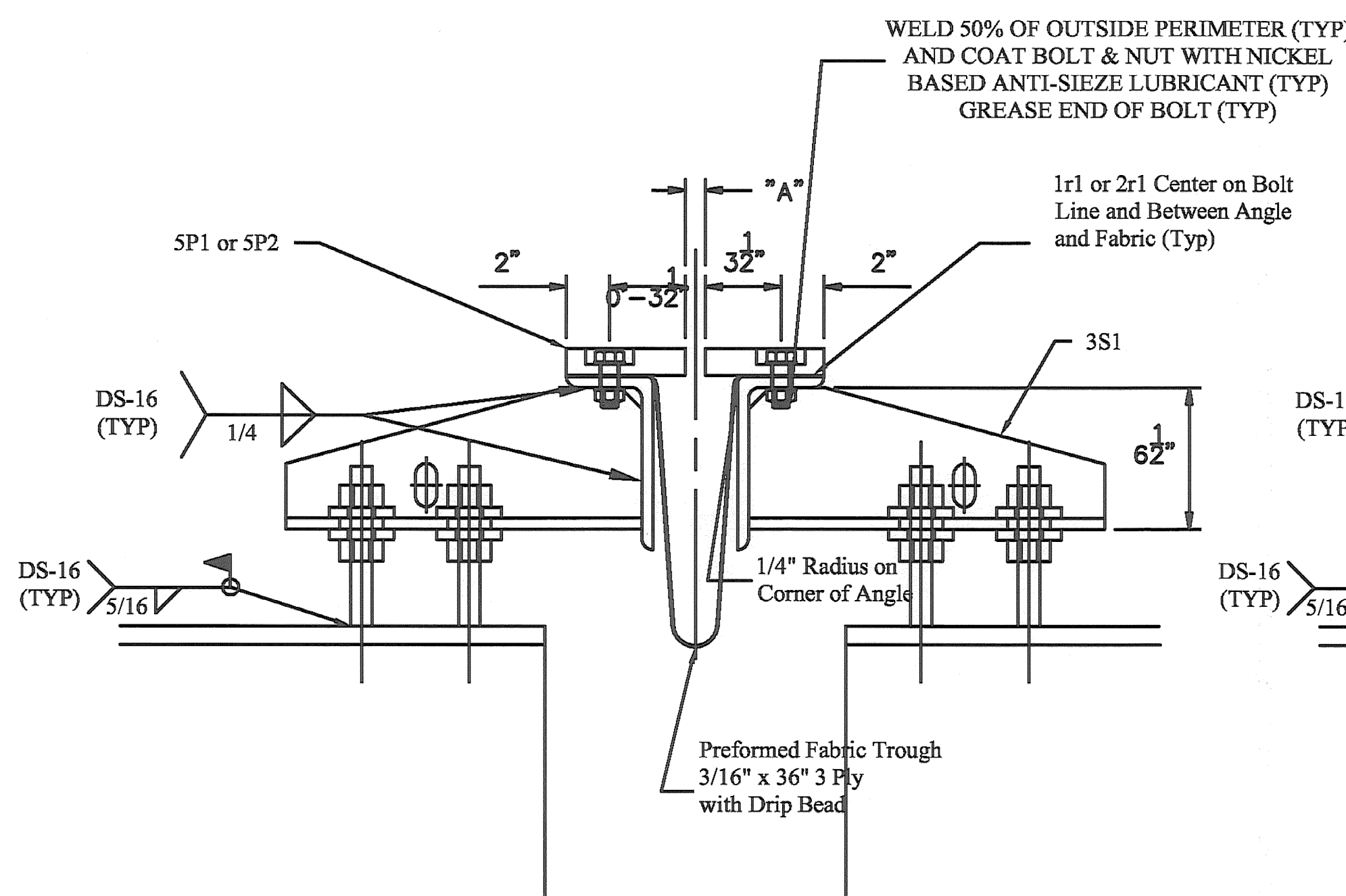


20 REQ'D - DETAIL 3S1

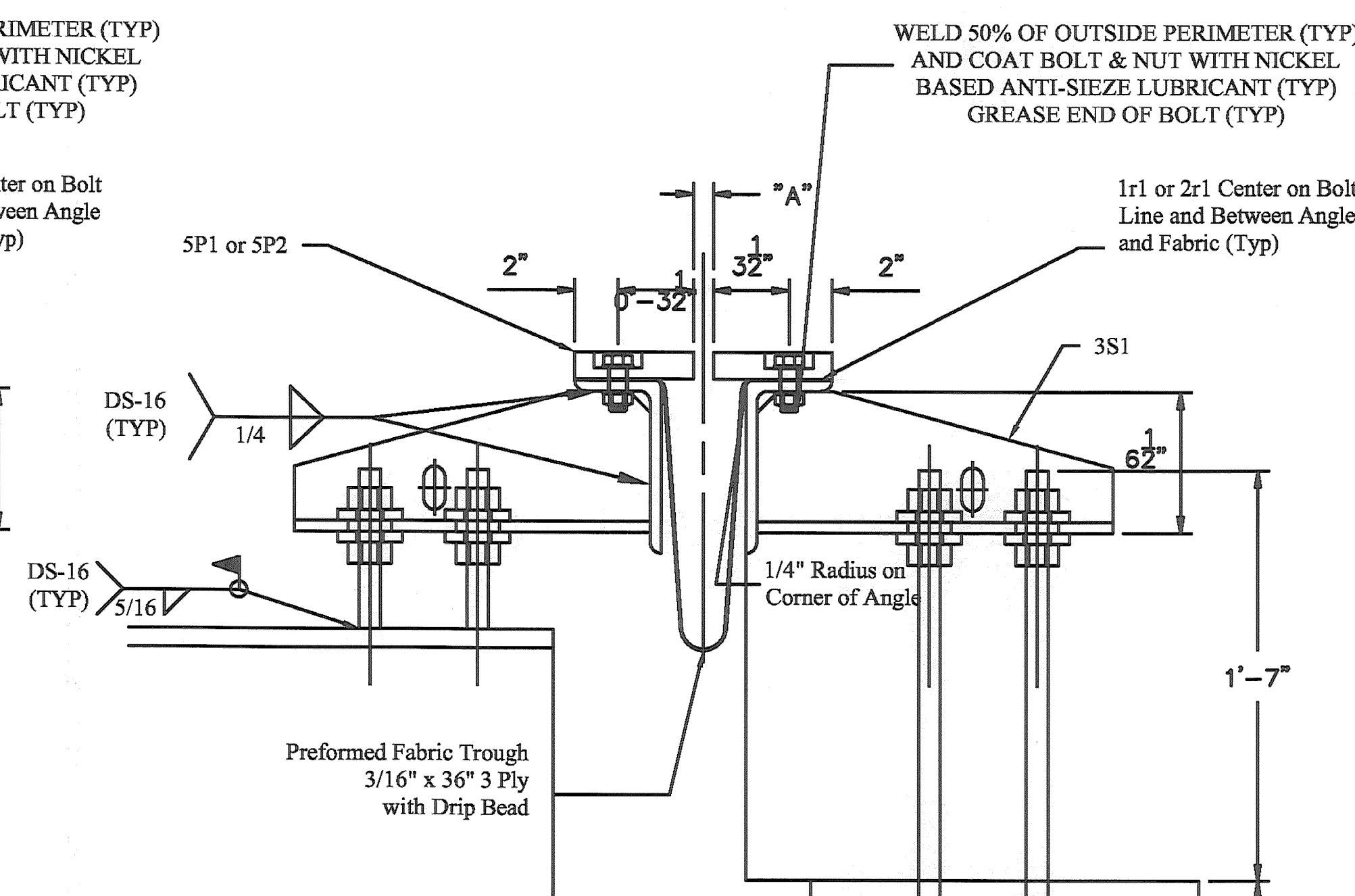


20 REQ'D - DETAIL 3p3

DETAIL OF GIRDER PLATES



**SECTION C-C
(PIER)**



**SECTION C-C
(ABUTMENT)**

TEMPERATURE ADJUSTMENT TABLE	
TEMPERATURE	"T"
15 °F	1 5/16"
30 °F	1 3/16"
45 °F	1 1/16"
60 °F	15/16"
75 °F	3/4"
90 °F	5/8"

BILL OF MATERIALS				
QTY	MARK	SHAPE	LENGTH	REMARKS
20	3S1	BRACKET SUPPORT ASSY		
20	3p2	Plate 1/2" x 8"	1'-4 1/2"	
20	3p3	Plate 1/2" x 6"	1'-4 1/2"	
160	3b1	Bar 3/8" x 3"	0'-3"	
60		1" Dia Threaded Rod x 8" with 2 Nuts		
20		#8 Threaded Rod x 3'-1" with 2 Nuts		

EXPANSION JOINT NOTES:

1. PREFORMED FABRIC TROUGH SHALL BE CONTINUOUS AND SHALL CONFORM TO SUBSECTION 707.07.
2. BUTYL RUBBER TAPE SHALL CONFORM TO SUBSECTION 707.12.
3. ALL STEEL COMPONENTS SHALL BE AASHTO M270 GRADE 36.
4. ALL STEEL COMPONENTS SHALL BE GALVANIZED OR METALIZED PER SUBSECTION 506.15, UNO.
5. BOLTS, NUTS & WASHERS SHALL CONFORM TO AASHTO M164 TYPE 1 UNO.
6. A DRIP BEAD 1/4" X 7" STRIP OF PREFORMED MATERIAL SHALL BE CEMENTED TO THE BOTTOM OF THE FABRIC TROUGH USING AN ADHESIVE APPROVED BY THE MANUFACTURER. THE DRIP BEAD SHALL BE APPLIED 1" FROM THE DOWNSPROUT END OF THE TROUGH.
7. THREADED ROD AND ASSOCIATED NUTS SHALL CONFORM TO SUBSECTION 714.04.

RECEIVED
 OK'D BY: _____ OK'D BY: _____
 JUN 09 2009
 RECEIVED BY: _____ APPROVED BY: _____
 DATE: _____

DRAWING COVERS	
VERMONT JOINT SUPPORT DETAILS	
PROJECT	MORETOWN STP DECK (37)
LOCATION	VERMONT 100B BRIDGE NO. 7
ENGINEER	VERMONT AGENCY OF TRANSPORTATION
CUSTOMER	CCS CONSTRUCTION

REV NO.	DATE	DESCRIPTION
0	6-3-2009	SUBMITTED FOR APPROVAL
HOLES AS NOTED		
MATERIAL: AASHTO M 270 GRADE 36 GALV		

MERRIMACK SHEET METAL

119 HALL STREET
 CONCORD NH 03301

Tel. 603.224.7766
 Fax 603.224.7925

DRAWN BY: RL
 CHECKED BY: JD
 JOB NO: #2808
 DWG: F3