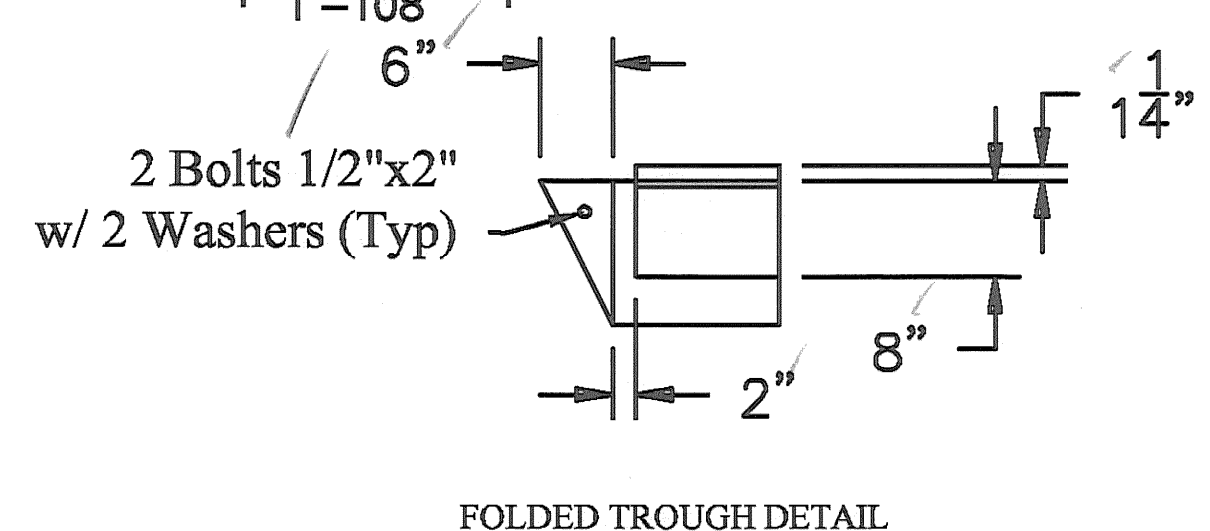


**4T1 - FABRIC TROUGH**  
**3/32" x 36" x 3 PLY**  
 (MATCH BOLT TO 1 1/4" PLATE)



BILL OF MATERIALS				
QTY	MARK	SHAPE	LENGTH	REMARKS
1	4T1	FABRIC TROUGH (ABUTMENT)		
1		Preformed Fabric Material 3 Ply x 36" x 37'-5"		
2		Bolt 1/2" x 2" Lg with 2 Washers and Nut		
1	4T2	FABRIC TROUGH (PIER)		
1		Preformed Fabric Material 3 Ply x 36" x 39'-11"		
2		Bolt 1/2" x 2" Lg with 2 Washers and Nut		

RECEIVED  
 OK'D BY: *HIS* DDJ  
 JUN 10 2009  
 REQUESTED BY: *CPW* APPROVED: *As Noted* DATE: 6/10/09

REV NO.	DATE	DESCRIPTION
1	6-8-2009	REVISED PER APPROVAL COMMENTS
0	6-3-2009	SUBMITTED FOR APPROVAL

HOLES AS NOTED  
 MATERIAL: AASHTO M 270 GRADE 36 GALV

DRAWING COVERS

**TROUGH LAYOUT (ABUTMENT & PIER)**

PROJECT	MORETOWN STP DECK (37)
LOCATION	VERMONT 100B BRIDGE NO. 7
ENGINEER	VERMONT AGENCY OF TRANSPORTATION
CUSTOMER	CSS CONSTRUCTION

**MERRIMACK SHEET METAL**

119 HALL STREET  
 CONCORD NH 03301

Tel. 603.224.7766  
 Fax 603.224.7925

DRAWN BY: RL  
 CHECKED BY: JD  
 JOB NO: #2808  
 DWG: F4