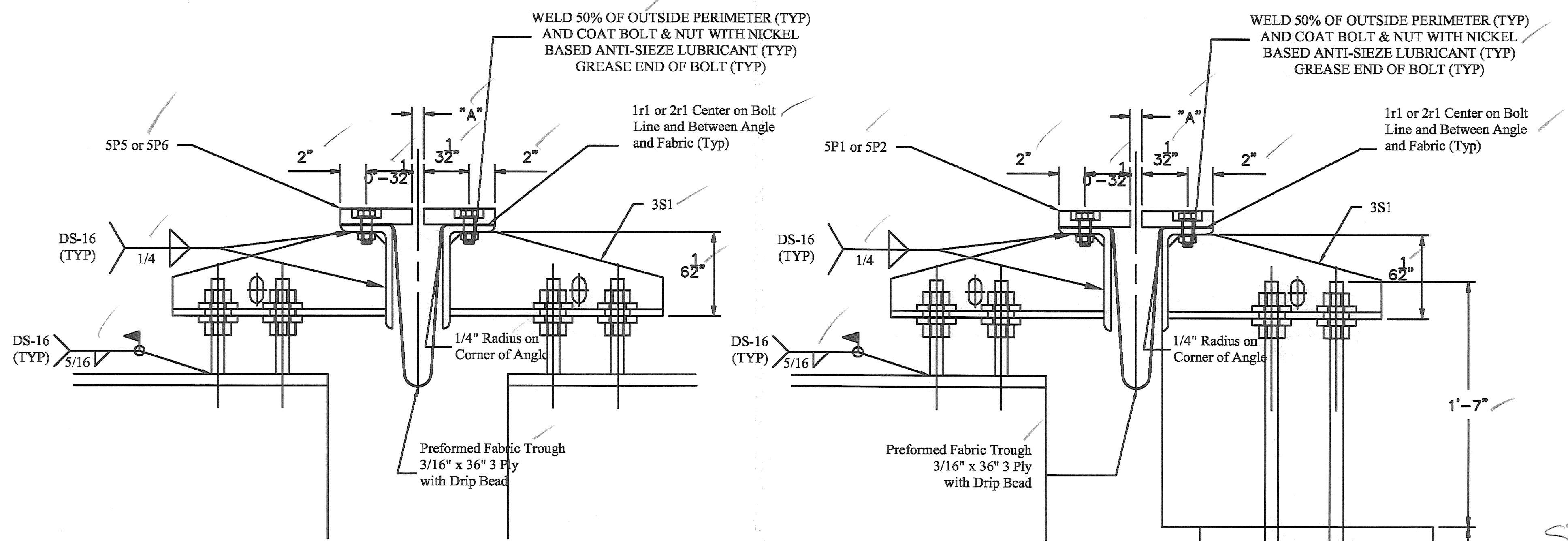


BILL OF MATERIALS				
QTY	MARK	SHAPE	LENGTH	REMARKS
20	3S1	BRACKET SUPPORT ASSY		
20	3p2	Plate 1/2" x 8"	1'-4 1/2"	
20	3p3	Plate 1/2" x 6"	1'-4 1/2"	
160	3b1	Bar 3/8" x 3"	0'-3"	
60		1" Dia Threaded Rod x 8" with 2 Nuts		
20		#8 Threaded Rod x 3'-1" with 2 Nuts		

DETAIL OF GIRDER PLATES



- EXPANSION JOINT NOTES:**
1. PREFORMED FABRIC TROUGH SHALL BE CONTINUOUS AND SHALL CONFORM TO SUBSECTION 707.07.
 2. BUTYL RUBBER TAPE SHALL CONFORM TO SUBSECTION 707.12.
 3. ALL STEEL COMPONENTS SHALL BE AASHTO M270 GRADE 36.
 4. ALL STEEL COMPONENTS SHALL BE GALVANIZED PER SUBSECTION 506.15, UNO.
 5. BOLTS, NUTS & WASHERS SHALL CONFORM TO AASHTO M164 TYPE 1 UNO.
 6. A DRIP BEAD 1/4" X 7" STRIP OF PREFORMED MATERIAL SHALL BE CEMENTED TO THE BOTTOM OF THE FABRIC TROUGH USING AN ADHESIVE APPROVED BY THE MANUFACTURER. THE DRIP BEAD SHALL BE APPLIED 1" FROM THE DOWNSPROUT END OF THE TROUGH.
 7. THREADED ROD AND ASSOCIATED NUTS SHALL CONFORM TO SUBSECTION 714.04.
 - 8. BEVEL ALL EDGES 1/16". *Prior to Galvanizing*

**SECTION C-C
(PIER)**

**SECTION C-C
(ABUTMENT)**

TEMPERATURE ADJUSTMENT TABLE	
TEMPERATURE	' T'
15 °F	1 5/16"
30 °F	1 3/16"
45 °F	1 1/16"
60 °F	15/16"
75 °F	3/4"
90 °F	5/8"

STRUCTURES COPY

RECEIVED
 CHK'D BY: *HTS*
 DDLS
 JUN 10 2009
 REQUEST BY: *CPW* APPROVED: *As Noted*
 DATE: 6/10/09

REV NO.	DATE	DESCRIPTION
1	6-9-2009	REVISED PER APPROVAL COMMENTS
0	6-3-2009	SUBMITTED FOR APPROVAL

HOLES AS NOTED
 MATERIAL: AASHTO M 270 GRADE 36 GALV

DRAWING COVERS

VERMONT JOINT SUPPORT DETAILS

PROJECT	MORETOWN STP DECK (37)
LOCATION	VERMONT 100B BRIDGE NO. 7
ENGINEER	VERMONT AGENCY OF TRANSPORTATION
CUSTOMER	CCS CONSTRUCTION

MERRIMACK SHEET METAL

119 HALL STREET
 CONCORD NH 03301

Tel. 603.224.7766
 Fax 603.224.7925

DRAWN BY: RL
 CHECKED BY: JD
 JOB NO: #2808
 DWG: F3