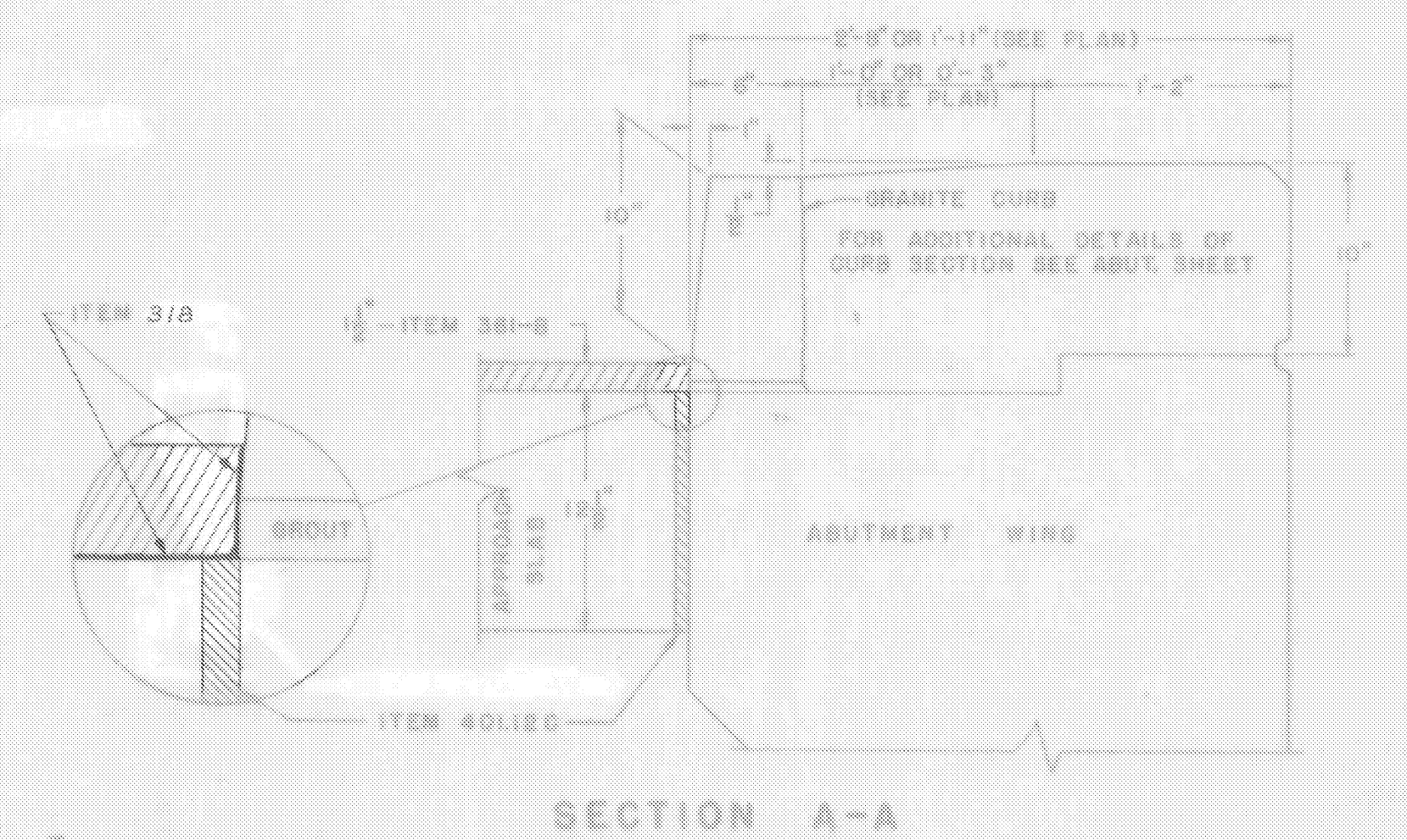
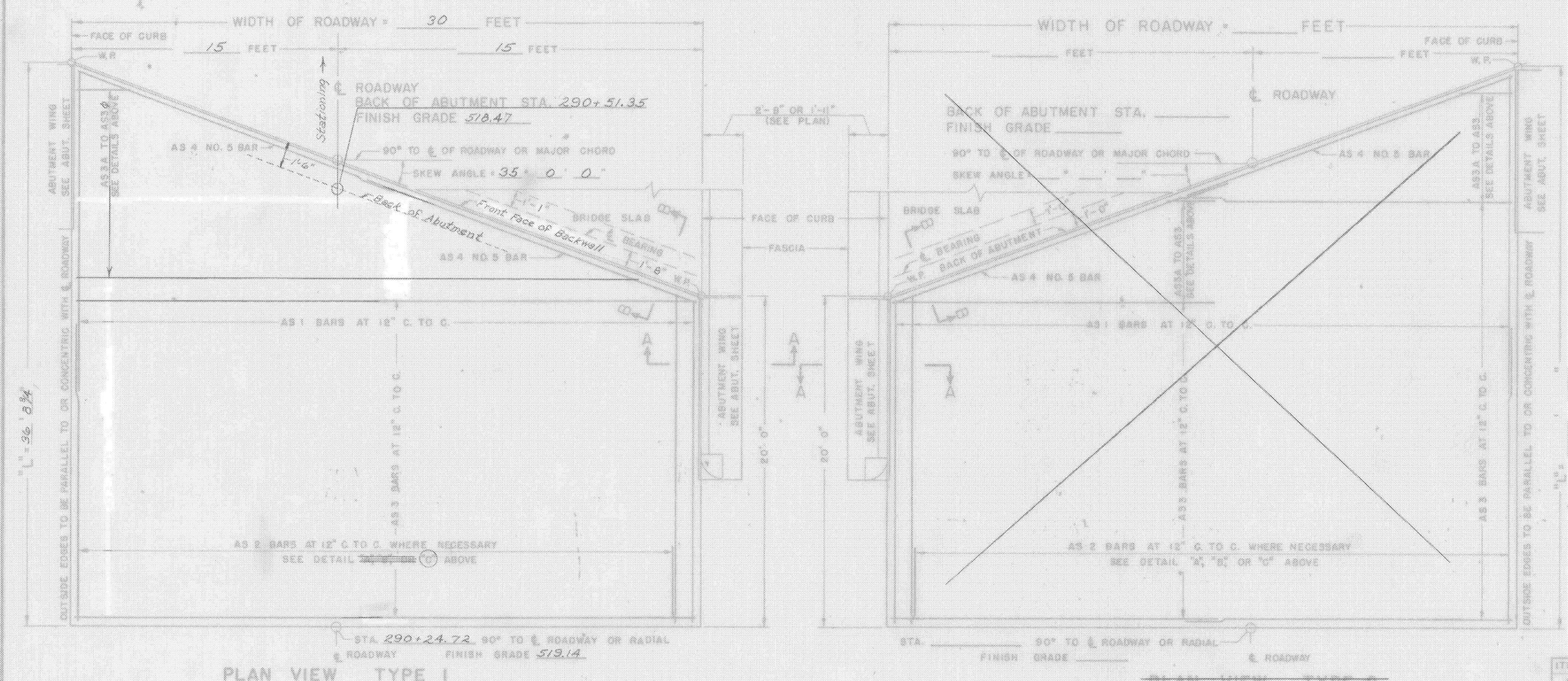


Note: For details of Section B-B, see Section A-A, Br. 107

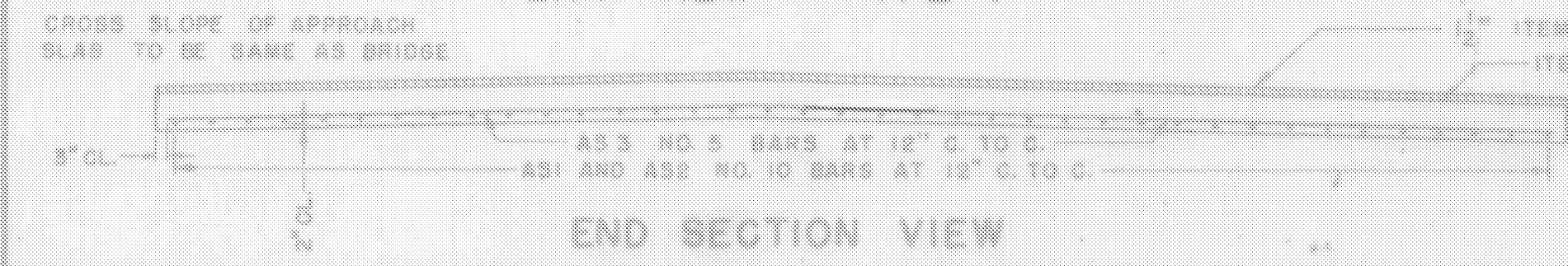


GENERAL NOTES
 1. ALL WORK AND MATERIALS SHALL CONFORM TO THE STATE OF VERMONT, DEPARTMENT OF HIGHWAYS, STANDARD SPECIFICATIONS FOR HIGHWAY AND BRIDGE CONSTRUCTION DATED APRIL 1964, AND THE A.A.S.H.O. SPECIFICATIONS DATED 1961, DESIGNED FOR HS20-44 LOADING.
 2. ALL REINFORCING STEEL SHALL BE DETAILED ON THE REINFORCING STEEL SCHEDULE. ALL SPLICES SHALL BE A MINIMUM OF 40 BAR DIAMETERS.

MORETOWN
 STP DECK(37)
 SHEET 20 OF 25
 FOR REFERENCE ONLY

REINFORCING BENDING DETAILS	
	A = 1'-0"
	B = 6'-6" OR VARIES
DETAIL SHOWN IS FOR AS 1 BAR ALL OTHER BARS ARE TO BE STRAIGHT	
REINFORCING STEEL	
BAR NO.	LENGTH PER FT. IN LBS.
AS 1	4,305
AS 2	4,305
AS 3	1,043
AS 4	1,043
TOTAL WEIGHT =	

SUMMARY OF QUANTITIES				
ITEM NO.	ITEM	UNIT	TOTAL	FINAL
318	TAR EMULSION FOR BRIDGE FLOORS	GAL.	38	
381-B	BITUMINOUS CONCRETE PAVEMENT	TONS	9	
372-A	JOINT SEALER - HOT POURED	L.F.		
372-C	JOINT SEALER - PREFORMED, TYPE A	L.F.		
372-D	JOINT SEALER - PREFORMED, TYPE B	L.F.		
401-B	CONCRETE CLASS B	CY.	35	
408	REINFORCING STEEL	LB.	5,420	



REVISIONS AND CORRECTIONS
 1. DIMENSIONS OF JOINT SEALER TYPE A REVISED 4/15/65 W.B.T.
 2. DIMENSIONS OF JOINT SEALER TYPE B REVISED 6/23/65 W.B.T.

DRAWN BY: W.B.T. Jan. 1965
 TRACED BY: W.B.T. Jan. 1965
 CHECKED BY: W.M.S. Feb. 1965

RECOMMENDED FOR APPROVAL: *[Signature]* 2/4/65
 BRIDGE ENGINEER DATE
 RECOMMENDED FOR APPROVAL: *[Signature]* 2/4/65
 ASSISTANT CHIEF ENGINEER DATE
 APPROVED BY: *[Signature]* 2/4/65
 CHIEF ENGINEER DATE

DETAILS OF APPROACH SLAB
 FOR 30 FOOT BRIDGE
 (WIDTH)
 TO BE USED FOR BRIDGE AT STATION 292+05
 LOCATION Approach Slab #1, Route 100-B over Mad River

STATE OF VERMONT
 DEPARTMENT OF HIGHWAYS
 STANDARD STRUCTURE
 SB-AS-65

TOWN OF Moretown
 ROUTE NO. 100-B
 LOG STA. 292+05
 DESIGNED BY W.B.T. CHECKED BY R.L.Q.
 PROJECT NO. S-0167(3)
 BR 109 OF 121 SHEET 55 OF 104