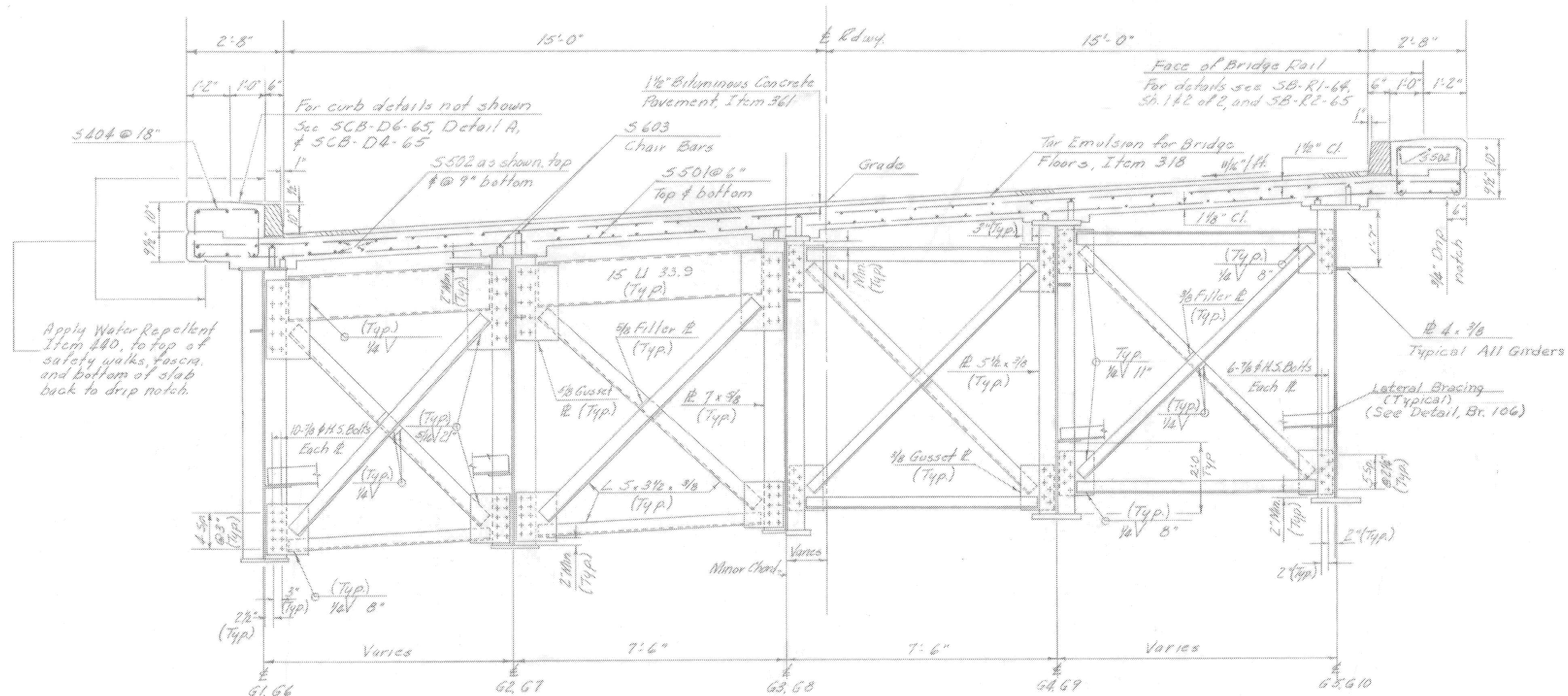


Floor Slab to be Concrete Class AA, 7.0" Thick
dapped as shown at beam haunches.
Surface to be screeded, floated
and broomed.

Note: Cut S501 transverse bars at skew end as
required and use cut-off on opposite end.

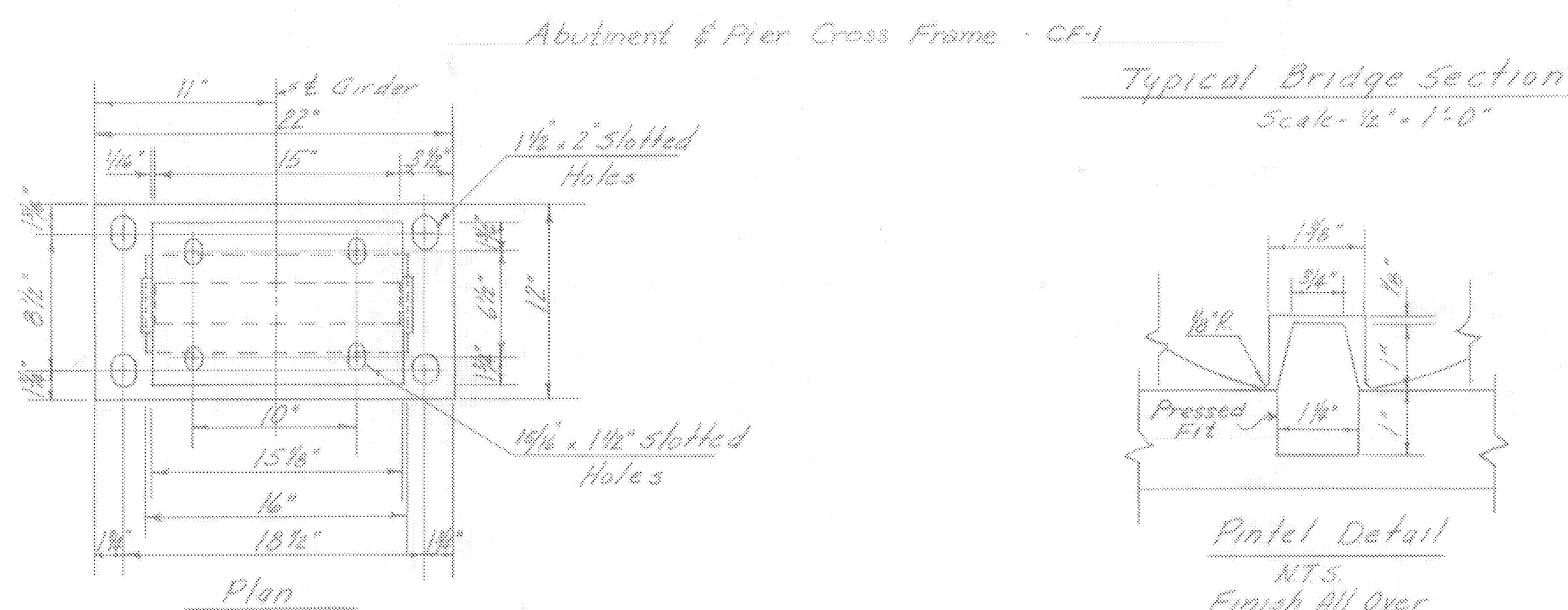
Superstructure Notes

1. For General Notes see Br. 100.
2. All structural steel shall be ASTM A36-G2T unless otherwise noted on the plans.
3. All field connections shall be made with 7/8" High Strength Bolts in 1/2" holes unless otherwise noted on the plans.



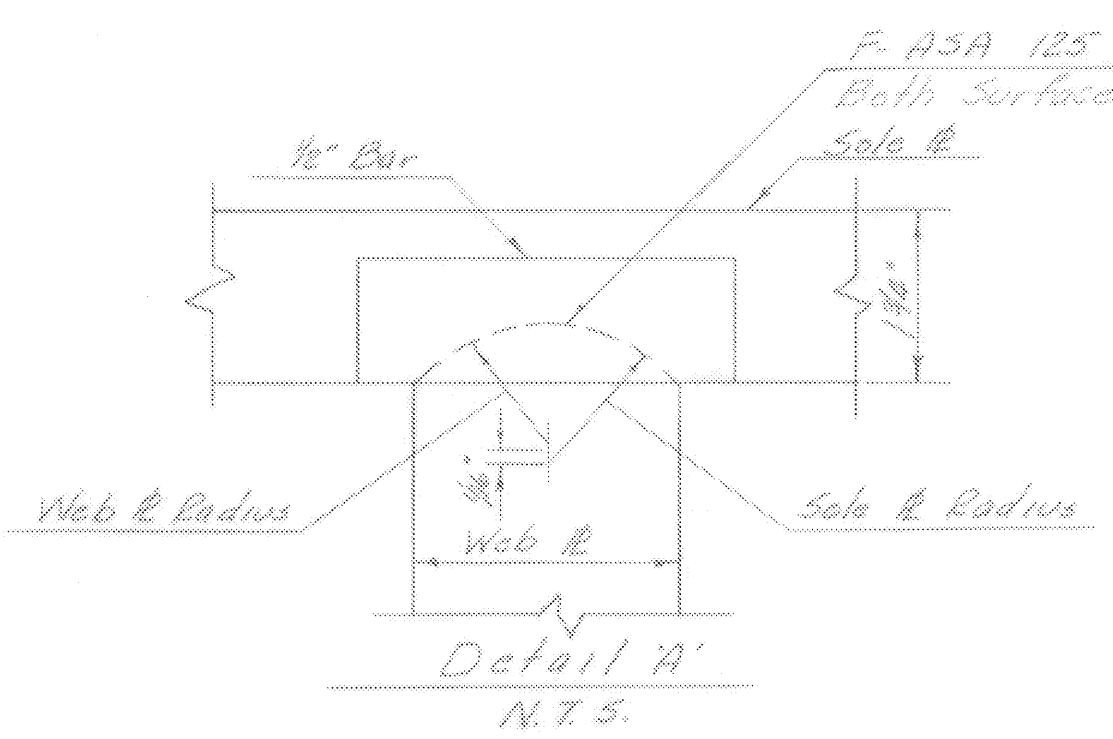
Bearing Device Notes

1. Bearing Pads 1/2" thick, equal in size to the bearing plates shall be used under each bearing, conforming to Specification 404.02(23)
2. Align devices so that all rocker arm shafts will be vertical at 45° F.
3. Contact surfaces of rockers to be given shop coat of white lead and tallow. Antel holes are to be filled with graphite grease at time of placement. Remainder of bearing to be given 3 coats of paint in accordance with Vt. Specification 404.03
4. Each span expands 0.01 Ft. for each 10° F. rise in temperature.



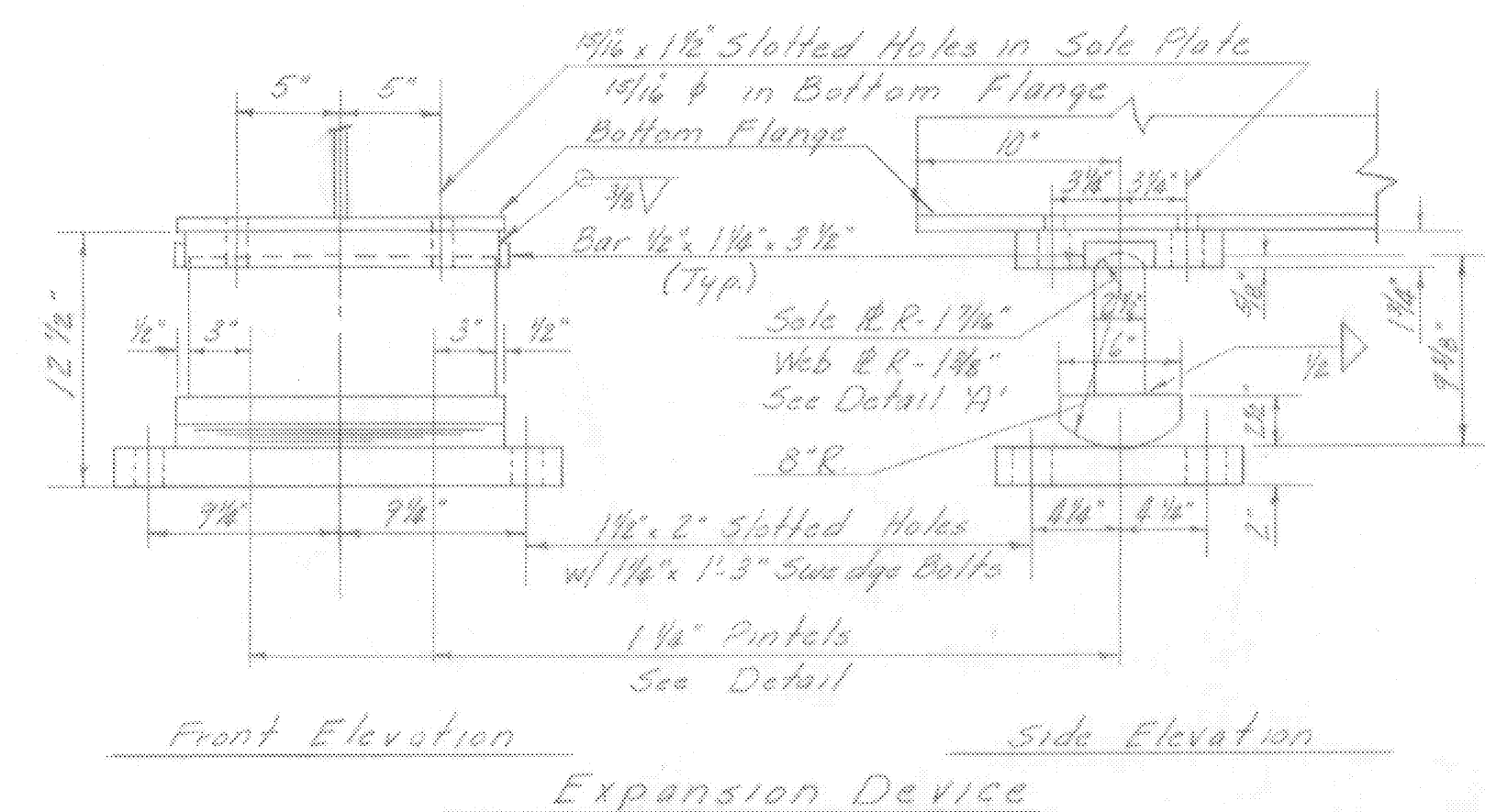
Typical Bridge Section
Scale - 1/2" = 1'-0"

Intermediate Cross Frame - CF-2
All Members - L 4x4, 9/16"

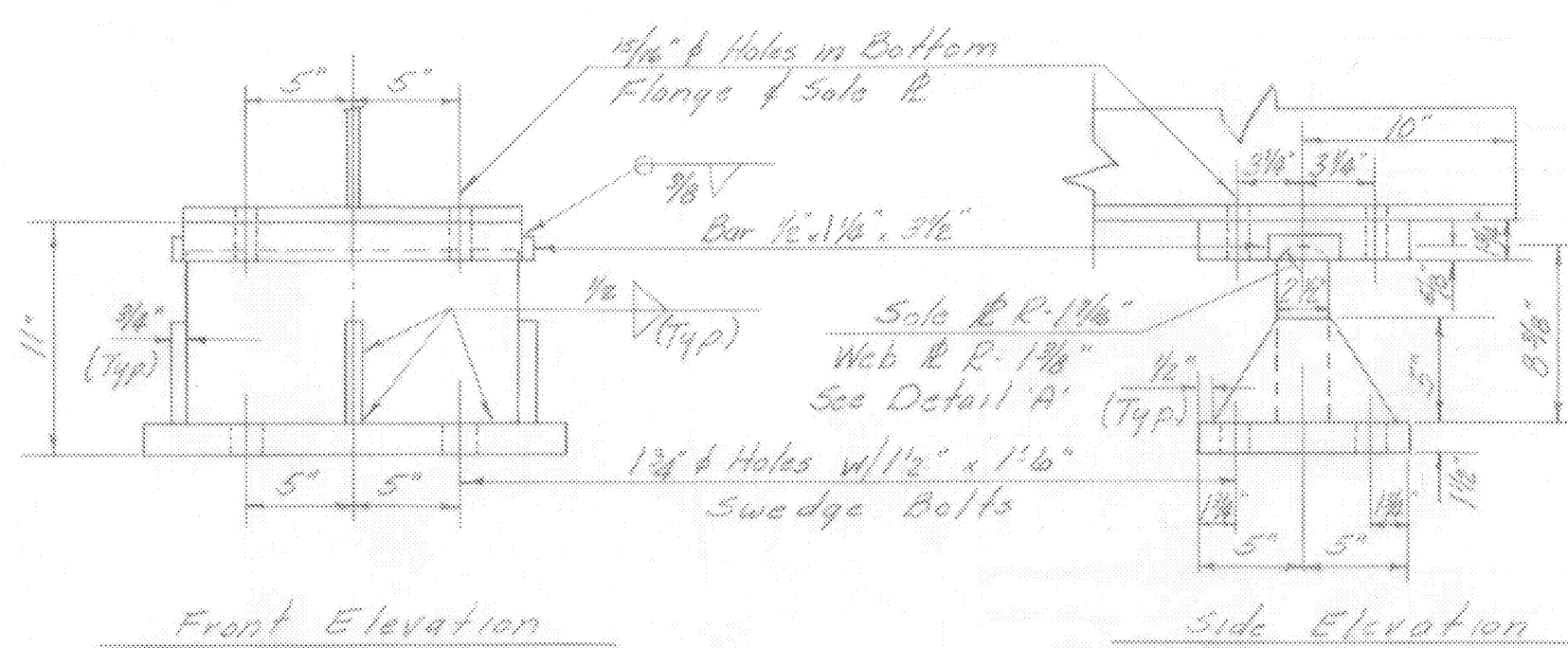


Detail A
N.T.S.

Wt. of Fixed Bearing: 325 lbs. ea. (10 required)
Wt. of Exp. Bearing: 405 lbs. ea. (10 required)



Expansion Device
Scale - 1/2" = 1'-0"



Fixed Device
Scale - 1/2" = 1'-0"

MORETOWN
STP DECK(37)
SHEET 16 OF 25
FOR REFERENCE ONLY
Br. 104 of 121

STATE OF VERMONT
DEPARTMENT OF HIGHWAYS

TOWN OF Moretown
ROUTE No. 100-B LOG STA. 292+05
Route 100-B over Mad River
Typical Section of Bearing Devices
SCALE As noted
SURVEYED BY
DRAWN BY N.B. WBT CHECKED BY RLO
PROJECT NO. S-0167(3)
SHEET 50 OF 104