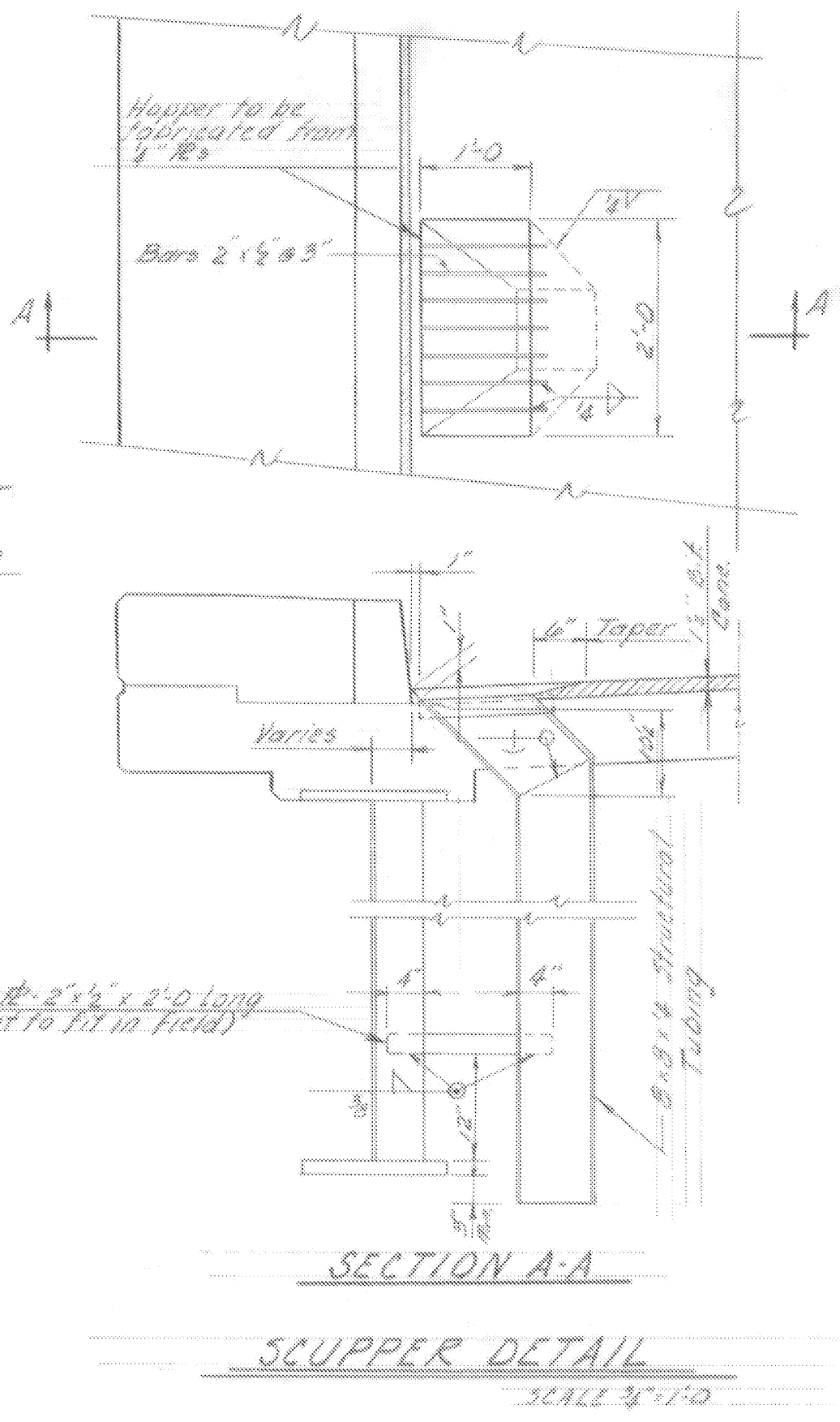
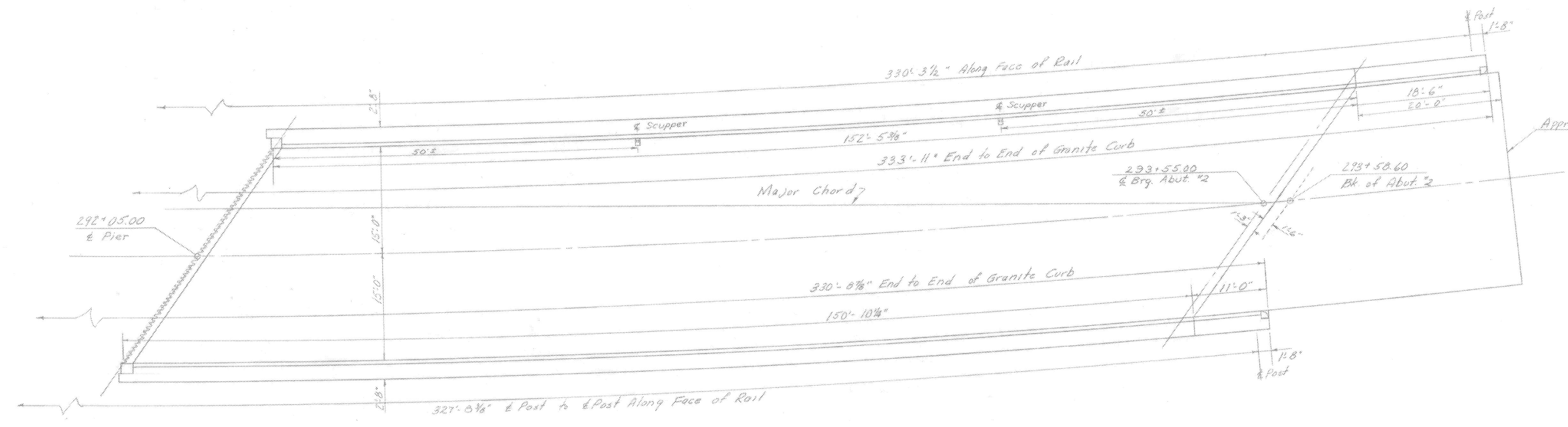


Superstructure - Span 1
Scale - 1/8" = 1'-0"

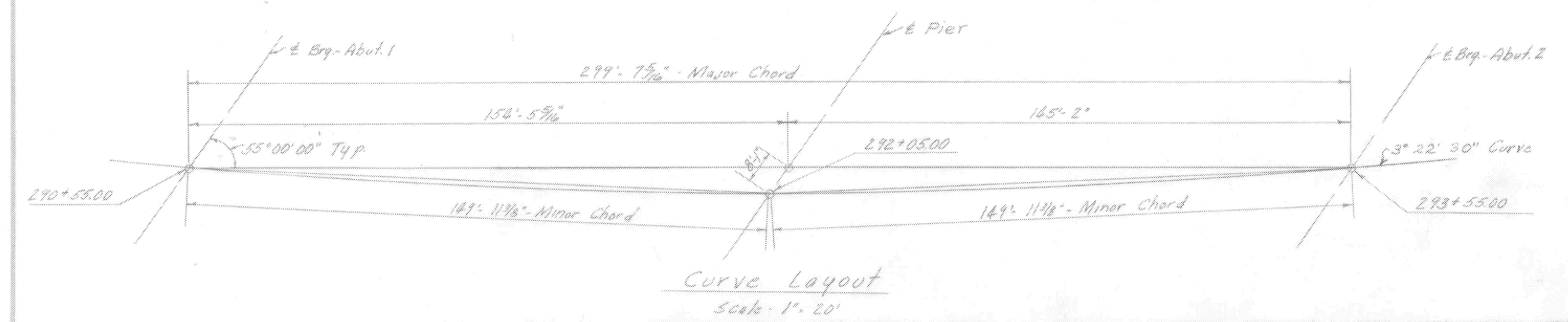


SECTION A-A
SCUPPER DETAIL
SCALE 3/8" = 1'-0"

- Notes
1. See Br. 100 For General Notes
 2. Refer to SB-R1-64, sheets 1 & 2 of 2, and SB-R2-65 For railing details and post spacing.



Superstructure Span 2
Scale - 1/8" = 1'-0"



Curve Layout
Scale - 1" = 20'

ITEM NO.	ITEM	UNIT	NET	TOTAL	FINAL
	CHAN. EXCAV. OF EARTH	C.Y.			
	CHAN. EXCAV. OF ROCK	C.Y.			
	UNCLASS. CHAN. EXCAV.	C.Y.			
	STRUCT. EXCAV.	C.Y.			
	CONC. CLASS AA (MOD.)	C.Y.			
	CONC. CLASS B (MOD.)	C.Y.			
	REINF. STEEL	LBS.			
	ASPHALTIC-ASB. COATING	S.Y.			
	TREATED TIMBER PILING	L.F.			
	SPLICES FOR STEEL PILING	EA.			
	STEEL PILING	L.F.			
	UNTREATED TIMBER PILING	L.F.			

MORETOWN
STP DECK(37)
SHEET 15 OF 25
FOR REFERENCE ONLY

Br. 103 of 121

STATE OF VERMONT
DEPARTMENT OF HIGHWAYS

TOWN OF Moretown

ROUTE No. 100-B LOG STA. 292.05

Route 100-B over Mad River

Superstructure Plan

SCALE As noted

SURVEYED BY _____

DRAWN BY M.D. WBT CHECKED BY RLO

PROJECT No. S-0167(3)

SHEET 42 OF 104