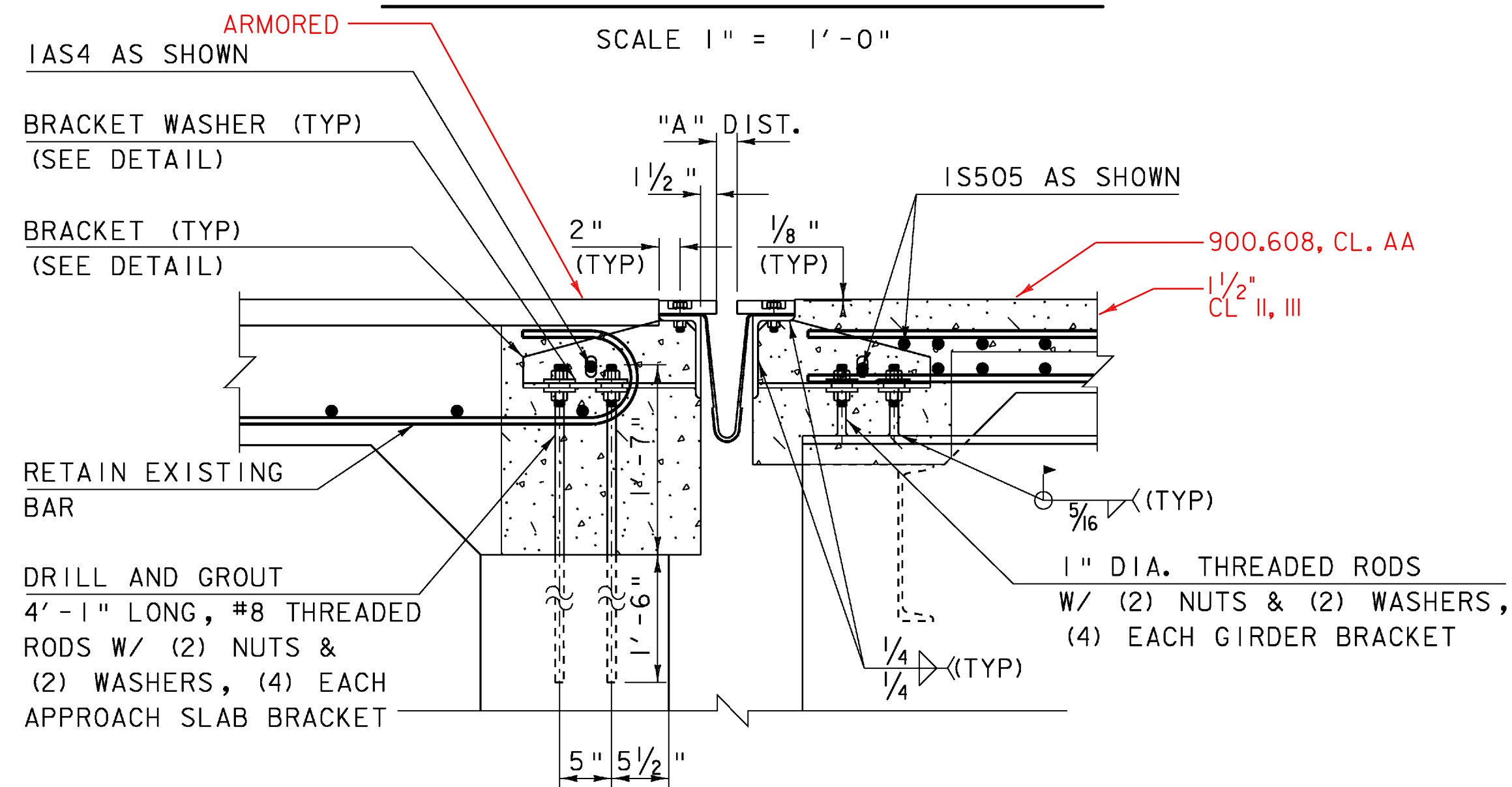


- AREA OF PARTIAL REMOVAL OF STRUCTURE
- AREA OF REPAIR OF CONCRETE SUPERSTRUCTURE SURFACE, CLASS II
- NEW CONCRETE, "SPECIAL PROVISION (HIGH PERFORMANCE CONCRETE, CLASS AA LOW CEMENT) "

ABUTMENT #1 EXISTING SECTION



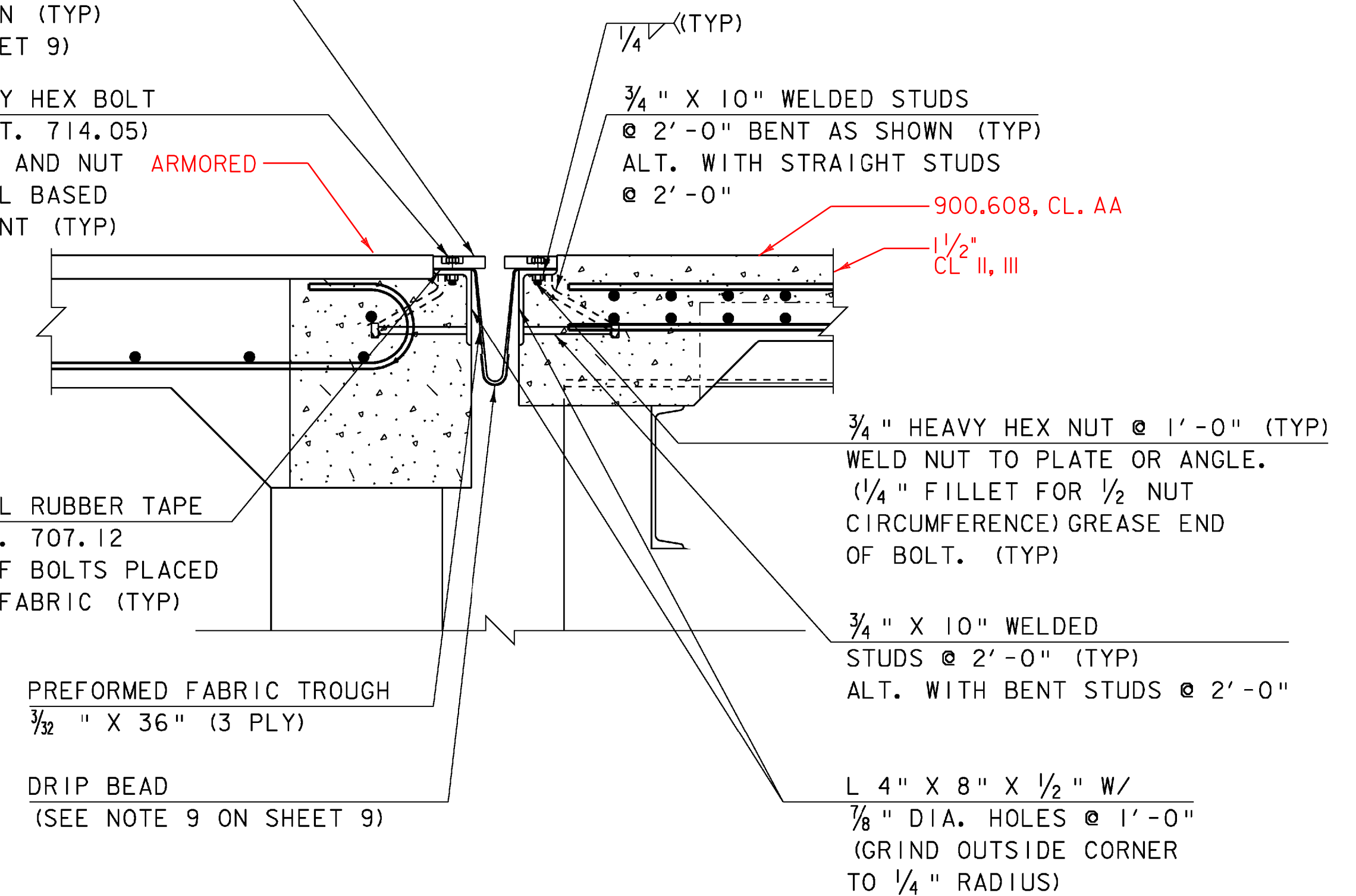
NEW ABUTMENT SECTION AT GIRDERS

SCALE 1" = 1'-0"

BAR 1/4" X 5 1/2" W/ 7/8" DIA. HOLES @ 1'-0" o-c COUNTERBORED 2/4" DIA. X 3/4" DEEP AS SHOWN (TYP) (SEE NOTE 7 ON SHEET 9)

3/4" DIA. X 2" HEAVY HEX BOLT (STD. SPEC. SUBSECT. 714.05) @ 1'-0", COAT BOLT AND NUT THREADS WITH NICKEL BASED ANTI-SEIZE LUBRICANT (TYP)

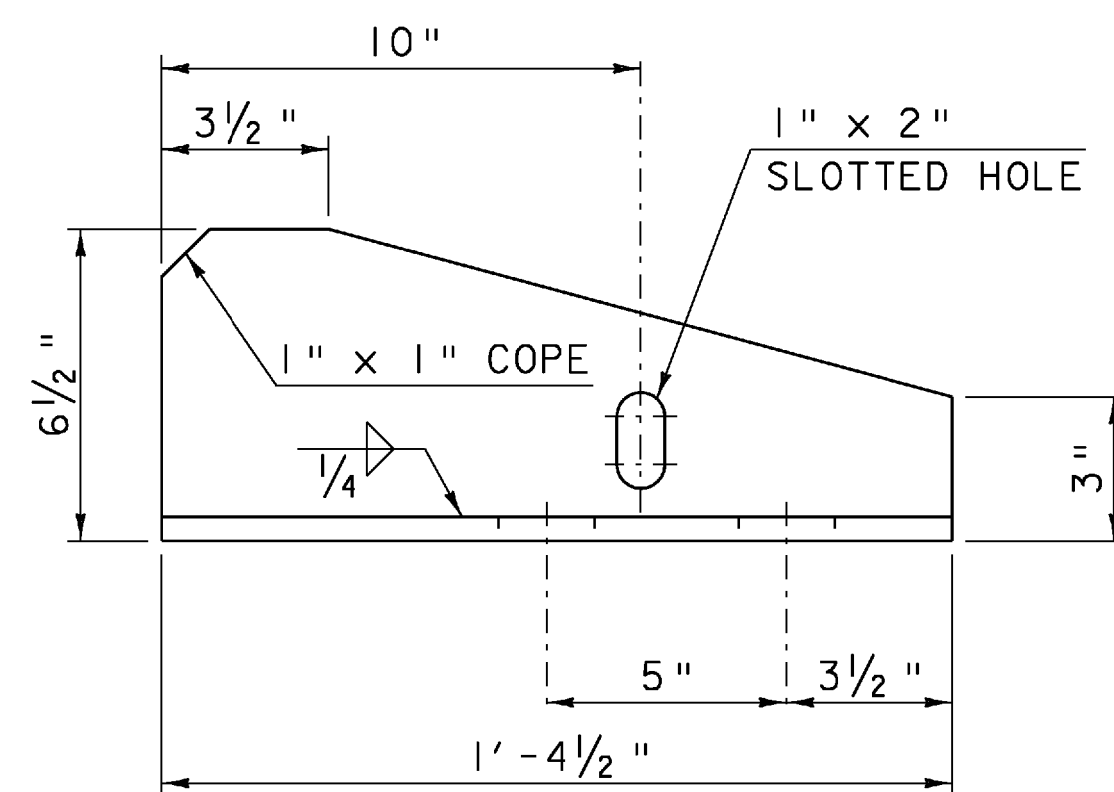
1/16" X 3" MIN, BUTYL RUBBER TAPE STD. SPEC. SUBSECT. 707.12 CENTERED ON LINE OF BOLTS PLACED BETWEEN ANGLE AND FABRIC (TYP)



NEW ABUTMENT SECTION BETWEEN GIRDERS

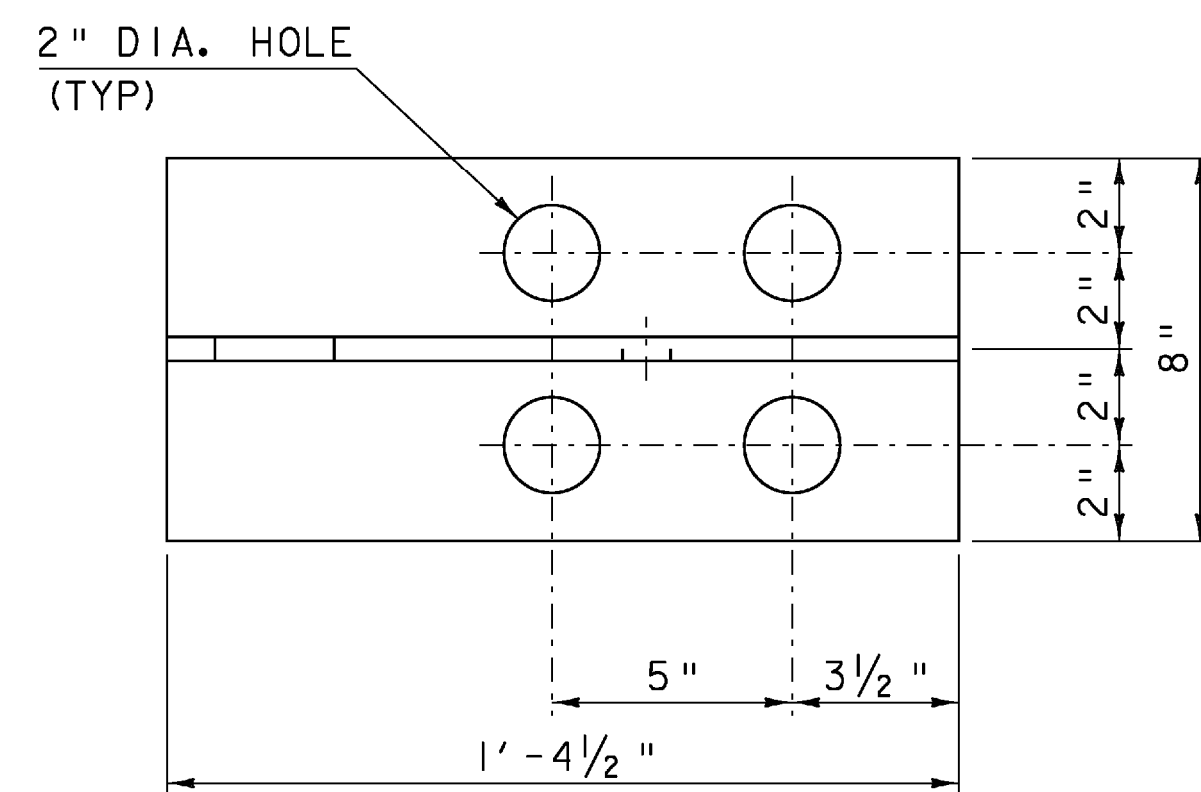
SCALE 1" = 1'-0"

ALL PLATES ARE 1/2" THICK



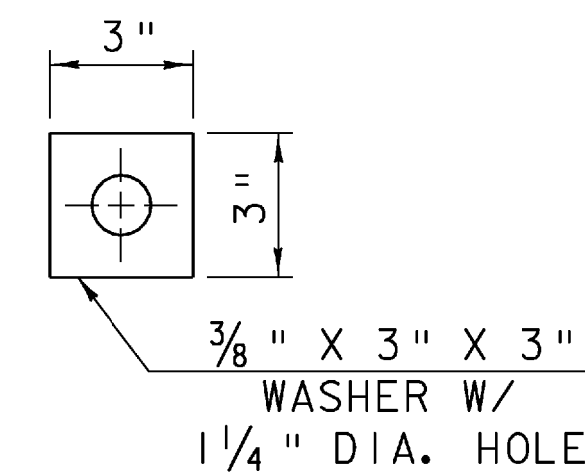
BRACKET ELEVATION

SCALE 3" = 1'-0"
CUT AND SHAPE TO FIT AGAINST 4" X 8" ANGLE



BRACKET PLAN

SCALE 3" = 1'-0"

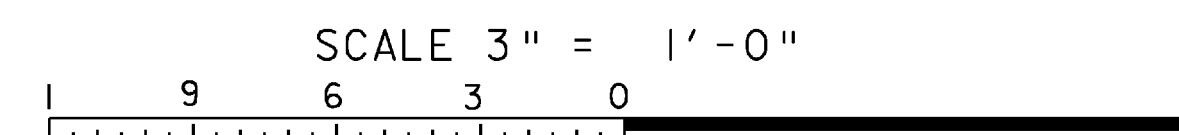
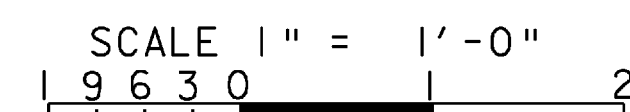


WASHER FOR BRACKET

SCALE: 3" = 1'-0"

TEMP	"A" DIST
0° F	1 7/16"
15° F	1 5/16"
30° F	1 3/16"
45° F	1 1/16"
60° F	1 5/16"
75° F	3/4"
90° F	5/8"
105° F	1/2"

"A" IS THE SETTING AFTER DEAD LOADS ARE PUT IN PLACE. NOTE: THE CONTRACTOR IS TO MEASURE THE DISTANCE BETWEEN THE TOP FLANGE AND ABUTMENT 1 BEFORE AND AFTER CONCRETE REMOVAL. ANY CHANGE IN DISTANCE SHALL BE APPLIED TO "A".



PROJECT NAME: MORETOWN	PLOT DATE: 15-APR-2009
PROJECT NUMBER: STP DECK (37)	DRAWN BY: D.D.BEARD
FILE NAME: 08c218de+alls.dgn	CHECKED BY: H. I. SALLS
PROJECT LEADER: C.P.WILLIAMS	SHEET 8 OF 25
DESIGNED BY: D. D. BEARD	
VERMONT JOINT DETAILS I	