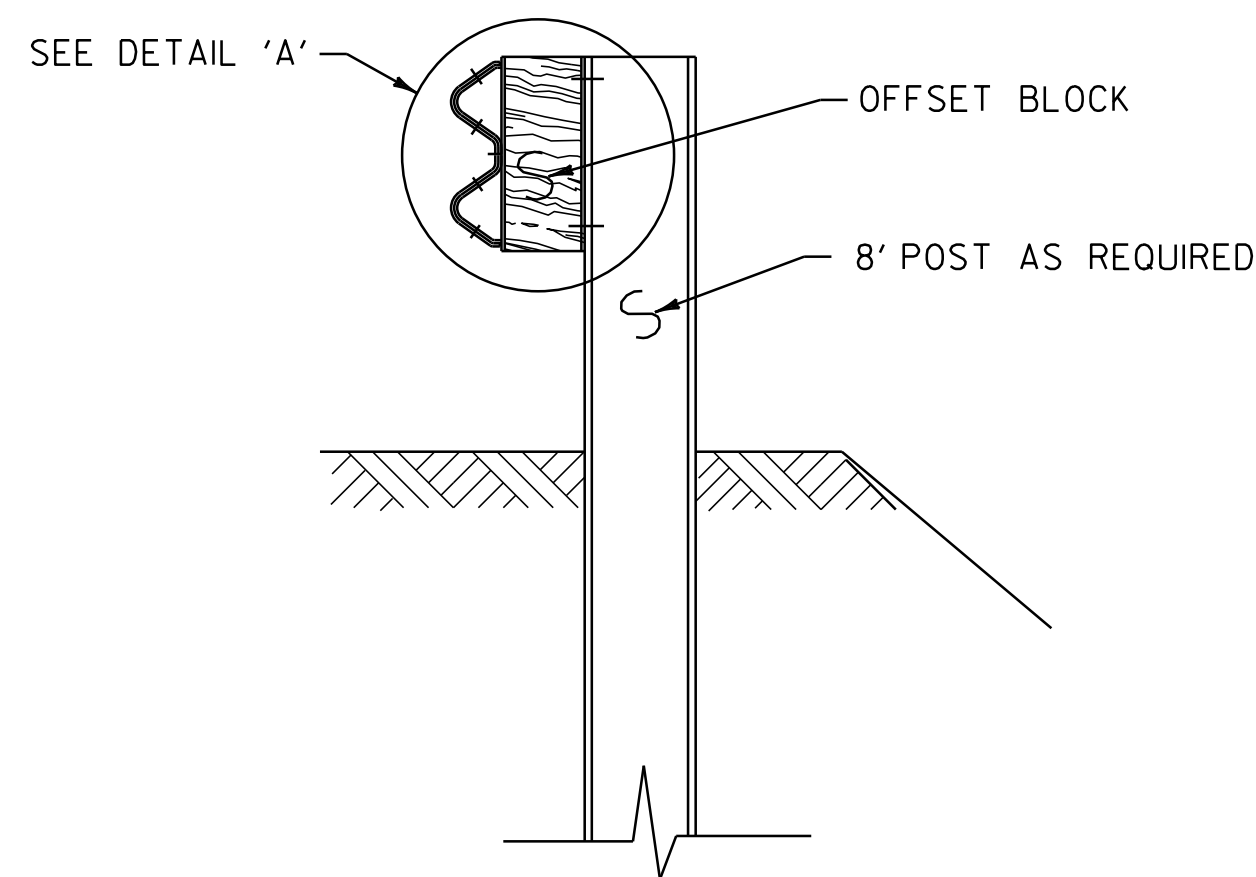
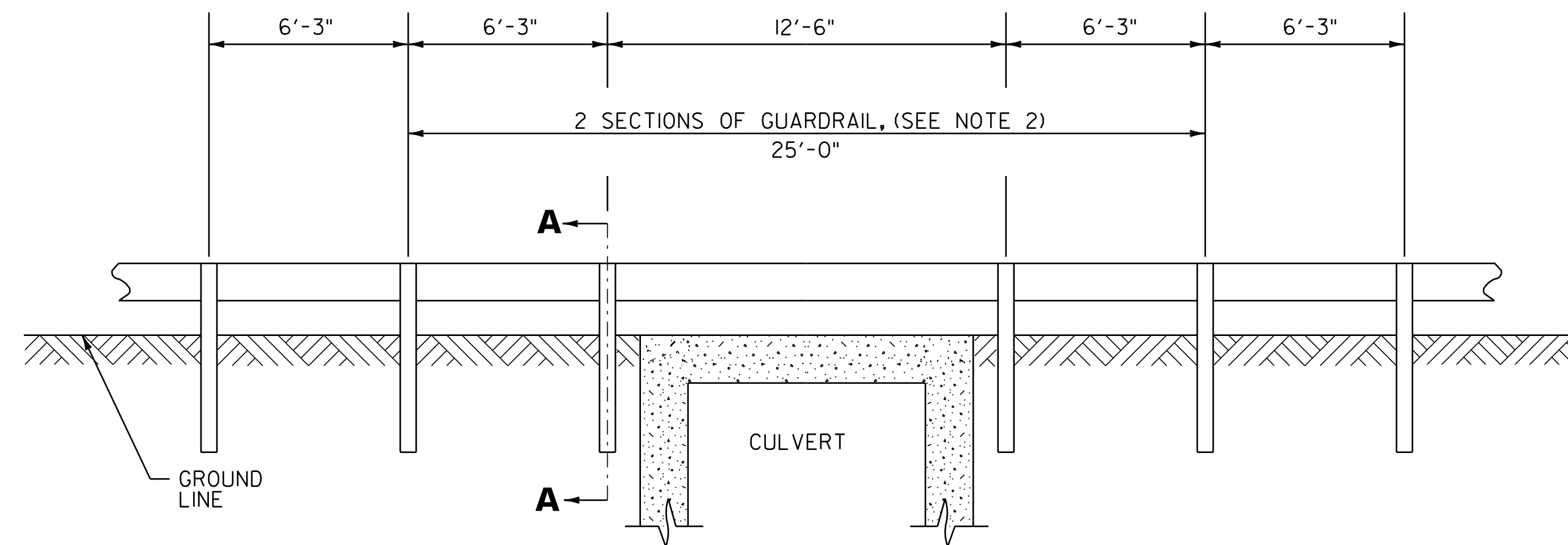


DETAIL A



SECTION A-A

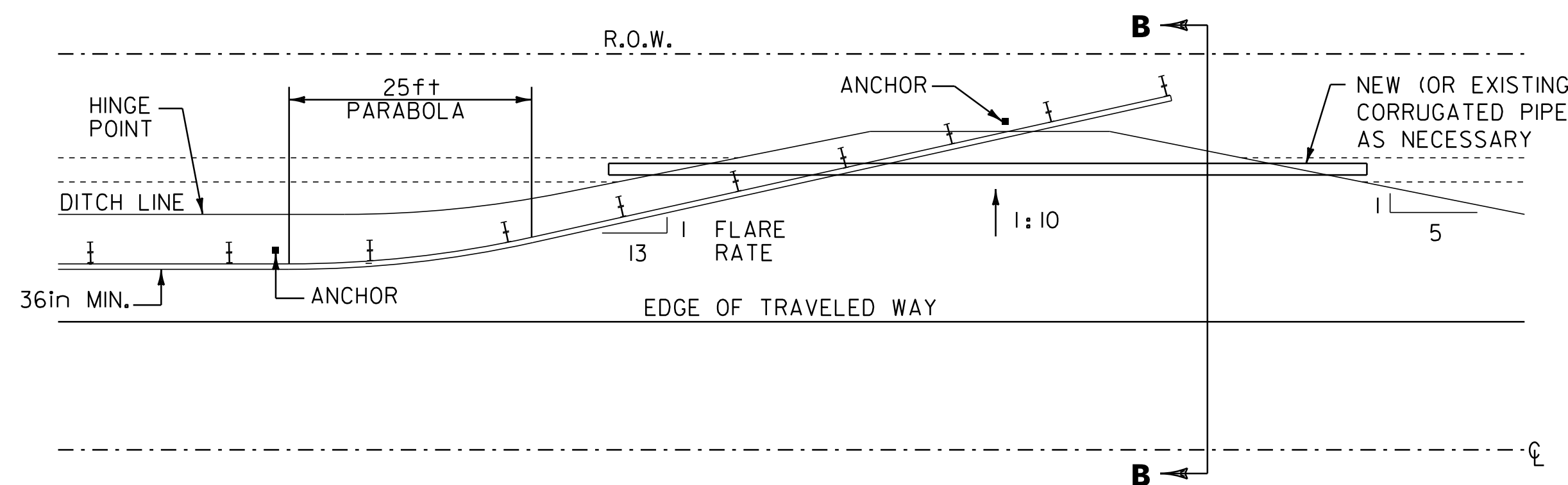


**DETAIL OF STEEL BEAM GUARDRAIL
AT LARGE CULVERTS (BRIDGE #7)**

WESTFORD STA. 275+19, LT
WESTFORD STA. 275+19, RT

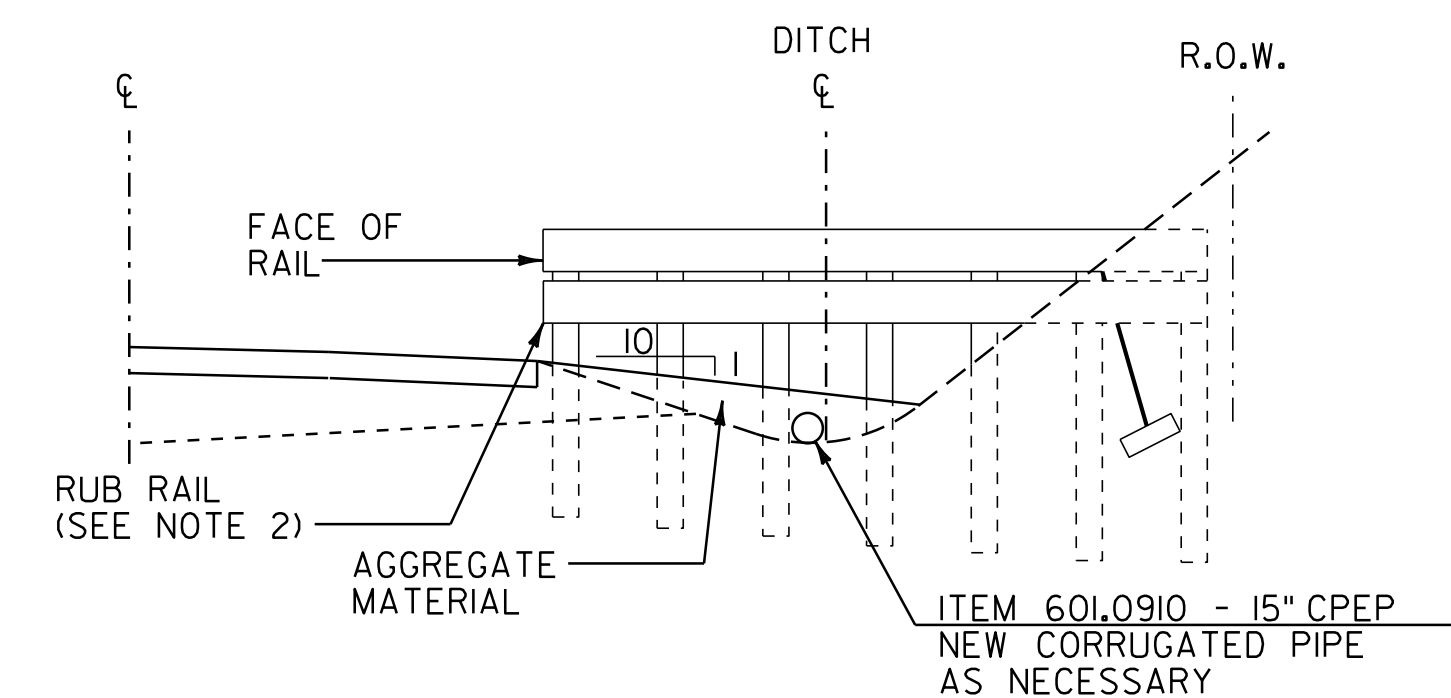
NOTES:

1. SEE VAOT STANDARDS G-1 & G-1d FOR STEEL BEAM GUARDRAIL DETAILS
2. THIS WORK SHALL BE PAID UNDER ITEM 62L207, STEEL BEAM GUARDRAIL, GALVANIZED/NESTED W/8 FEET POSTS
3. THIS DETAIL TO BE USED AS INDICATED ON THE ITEM DETAIL SUMMARY SHEET OR AS DIRECTED BY THE RESIDENT ENGINEER.



**DETAIL FOR BURIED GUARDRAIL
ENDS INTO BACKSLOPES**

WESTFORD STA. 248+29, RT
WESTFORD STA. 279+06.5, LT



SECTION B-B

NOTES:

1. PRIMARY RAIL SHALL REMAIN AT A CONSTANT HEIGHT (LEVEL) RELATIVE TO THE HEIGHT OF RAIL AT THE EDGE OF SHOULDER.
2. ADDITION OF RUB RAIL IS REQUIRED WHEN OPENING BENEATH PRIMARY RAIL EXCEEDS 18". RUB RAIL EXTENDS FROM THE EDGE OF SHOULDER TO THE BACK SLOPE.
3. AN ESTIMATED 20 LF OF ITEM 60L0910 15" CPEP HAS BEEN INCLUDED AT EACH LOCATION FOR USE AS DIRECTED BY THE RESIDENT ENGINEER.

NOT TO SCALE

**GUARDRAIL
DETAIL
SHEET #1**

PROJECT NAME: WESTFORD - FAIRFAX
PROJECT NUMBER: STP 2804(1)

FILE NAME: p08c212.dgn
PROJECT LEADER: JLL
DESIGNED BY: STANTEC
IPARM FILE: p08c212gds01.i

PLOT DATE: 31-OCT-2012 13:59
DRAWN BY: STANTEC
CHECKED BY: JLL
SHEET 71 OF 79

