

616.35 TREATED TIMBER CURB
STA. 9+44 TO 9+50, LT

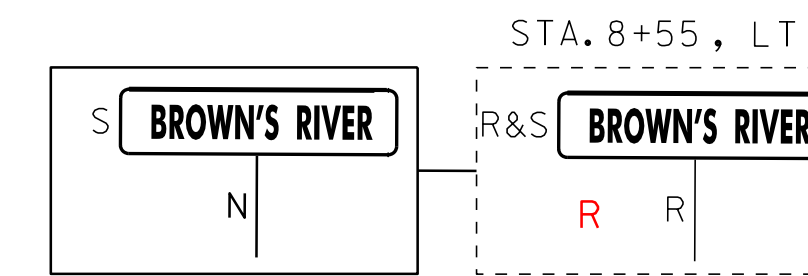
616.47 BITUMINOUS CONCRETE GUTTERS AND TRAFFIC ISLANDS
STA. 9+44 TO 9+50, LT
(SEE DETAIL ON MISCELLANEOUS DETAIL SHEET)

621.20 STEEL BEAM GUARDRAIL, GALVANIZED
STA. 7+81.5 TO 8+19, LT
STA. 7+86 TO 8+11, RT

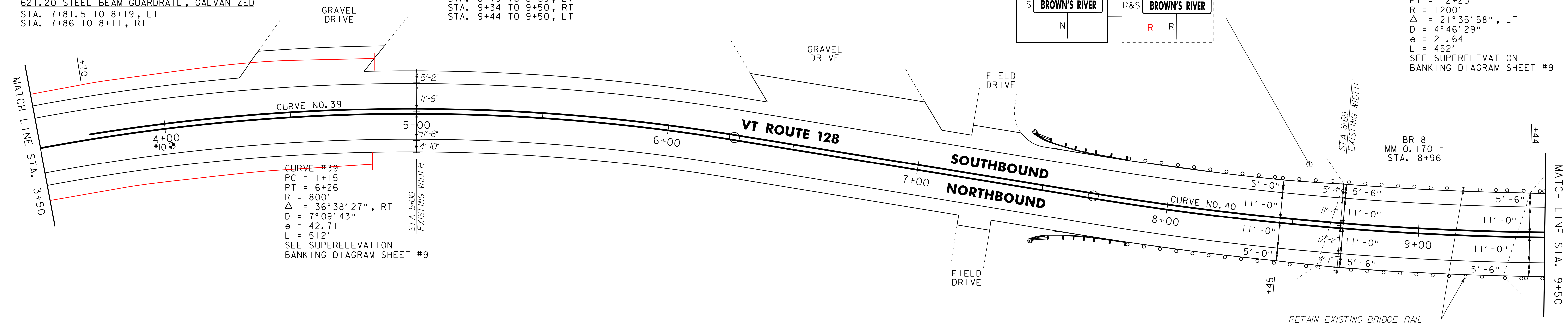
621.50 MANUFACTURED TERMINAL SECTION, FLARED
STA. 7+44 TO 7+81.5, LT
STA. 7+48.5 TO 7+86, RT

621.70 GUARDRAIL APPROACH SECTION, GALVANIZED TYPE I
STA. 8+11 TO 8+61, RT
STA. 8+19 TO 8+69, LT
STA. 9+34 TO 9+50, RT
STA. 9+44 TO 9+50, LT

621.80 REMOVAL AND DISPOSAL OF GUARDRAIL
STA. 7+43.5 TO 8+69, LT
STA. 7+46 TO 8+61, RT
STA. 9+34 TO 9+50, RT
STA. 9+44 TO 9+50, LT



CURVE #40
PC = 7+70
PT = 12+23
R = 1200'
 $\Delta = 21^\circ 35' 58''$, LT
D = 4° 46' 29"
e = 21.64
L = 452'
SEE SUPERELEVATION BANKING DIAGRAM SHEET #9



CURVE #39
PC = 1+15
PT = 6+26
R = 800'
 $\Delta = 36^\circ 38' 27''$, RT
D = 7° 09' 43"
e = 42.71
L = 512'
SEE SUPERELEVATION BANKING DIAGRAM SHEET #9

PAVEMENT CORE DATA			
CORE #	DEPTH (IN.)	PCC	COMMENTS
10	4 1/4"	NO	

646.402 DURABLE 4 INCH WHITE LINE, THERMOPLASTIC
(ALL LINES WILL INCLUDE EDGE LINE BREAKS AND RADII FOR SIDE ROADS)
STA. 3+50 TO 9+50, SOLID LT & RT

646.602 TEMPORARY 4 INCH WHITE LINE, PAINT
(ALL LINES WILL INCLUDE EDGE LINE BREAKS AND RADII FOR SIDE ROADS)
STA. 3+50 TO 9+50, SOLID LT & RT

675.50 REMOVING SIGNS
AS SHOWN - I

675.60 ERECTING SALVAGED SIGNS
AS SHOWN - I

646.412 DURABLE 4 INCH YELLOW LINE, THERMOPLASTIC
(ALL LINES WILL INCLUDE C BREAKS FOR SIDE ROADS)
STA. 3+50 TO 3+70, DASHED LT, SOLID RT
STA. 3+70 TO 9+50, SOLID LT & RT

646.612 TEMPORARY 4 INCH YELLOW LINE, PAINT
(ALL LINES WILL INCLUDE C BREAKS FOR SIDE ROADS)
STA. 3+50 TO 3+70, DASHED LT, SOLID RT
STA. 3+70 TO 9+50, SOLID LT & RT

616.35 TREATED TIMBER CURB
STA. 9+50 TO 9+79, LT

616.47 BITUMINOUS CONCRETE GUTTERS AND TRAFFIC ISLANDS
STA. 9+50 TO 9+79, LT

621.20 STEEL BEAM GUARDRAIL, GALVANIZED
STA. 9+84 TO 10+59, RT
STA. 9+94 TO 10+56.5, LT

621.50 MANUFACTURED TERMINAL SECTION, FLARED
STA. 10+56.5 TO 10+94, LT
STA. 10+59 TO 10+96.5, RT

621.70 GUARDRAIL APPROACH SECTION, GALVANIZED TYPE I
STA. 9+50 TO 9+84, RT
STA. 9+50 TO 9+94, LT

621.80 REMOVAL AND DISPOSAL OF GUARDRAIL
STA. 9+50 TO 10+86, RT
STA. 9+50 TO 11+02, LT

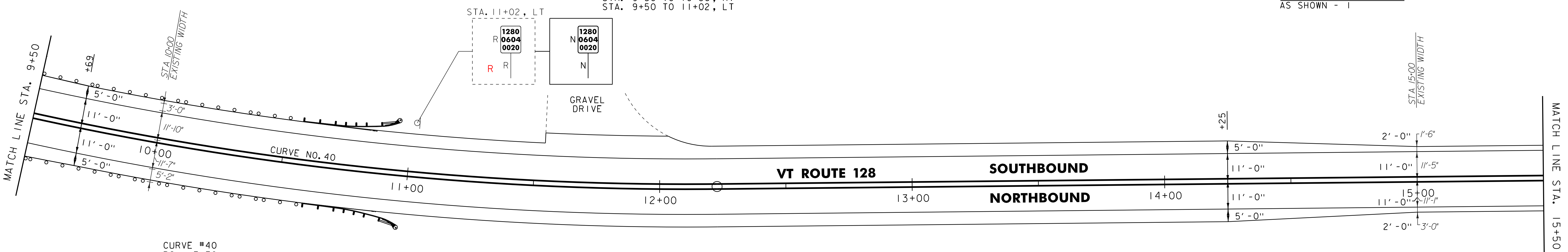
646.402 DURABLE 4 INCH WHITE LINE, THERMOPLASTIC
(ALL LINES WILL INCLUDE EDGE LINE BREAKS AND RADII FOR SIDE ROADS)
STA. 9+50 TO 15+50, SOLID LT & RT

646.412 DURABLE 4 INCH YELLOW LINE, THERMOPLASTIC
(ALL LINES WILL INCLUDE C BREAKS FOR SIDE ROADS)
STA. 9+50 TO 15+50, SOLID LT & RT

646.602 TEMPORARY 4 INCH WHITE LINE, PAINT
(ALL LINES WILL INCLUDE EDGE LINE BREAKS AND RADII FOR SIDE ROADS)
STA. 9+50 TO 15+50, SOLID LT & RT

646.612 TEMPORARY 4 INCH YELLOW LINE, PAINT
(ALL LINES WILL INCLUDE C BREAKS FOR SIDE ROADS)
STA. 9+50 TO 15+50, SOLID LT & RT

675.50 REMOVING SIGNS
AS SHOWN - I



CURVE #40
PC = 7+70
PT = 12+23
R = 1200'
 $\Delta = 21^\circ 35' 58''$, LT
D = 4° 46' 29"
e = 21.64
L = 452'
SEE SUPERELEVATION BANKING DIAGRAM SHEET #9

NOTES:
1. ALL EXISTING SIGNS NOT SHOWN SHALL BE RETAINED.
2. FOR LEGENDS, SEE LAYOUT SHEET #1.
NOT TO SCALE

PROJECT LAYOUT SHEET #30	PROJECT NAME: WESTFORD - FAIRFAX
	PROJECT NUMBER: STP 2804(1)
	FILE NAME: p08c212.dgn
	PLOT DATE: 31-OCT-2012 13:58
	PROJECT LEADER: JLL
	DRAWN BY: STANTEC
	DESIGNED BY: STANTEC
	CHECKED BY: JLL
	IPARM FILE: p08c212130.i
	SHEET 46 OF 79

