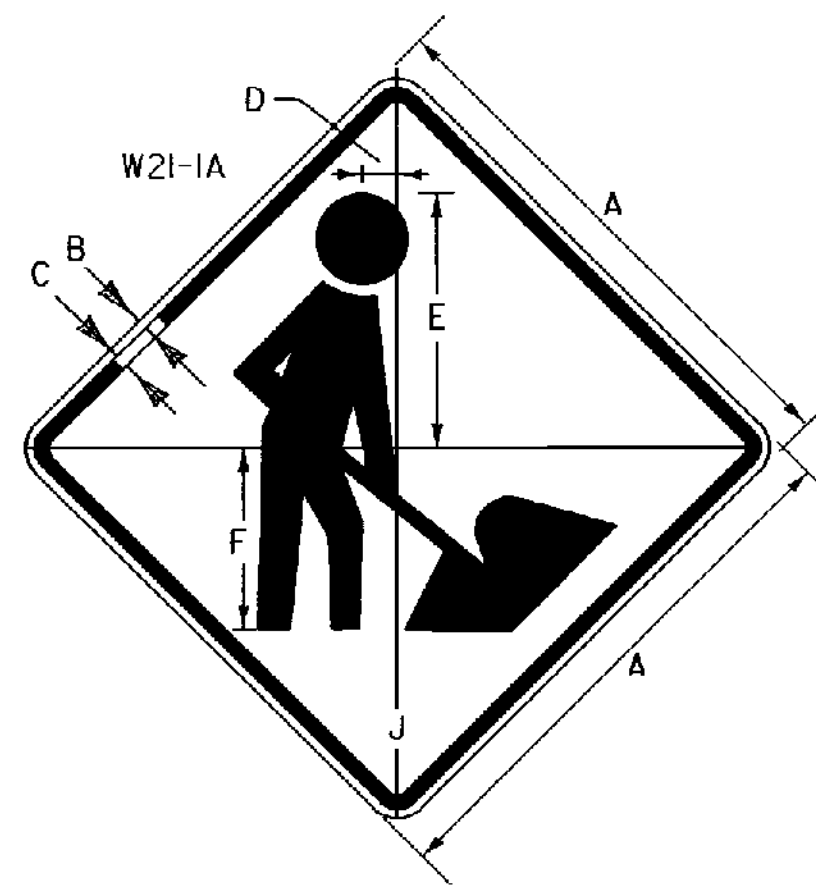
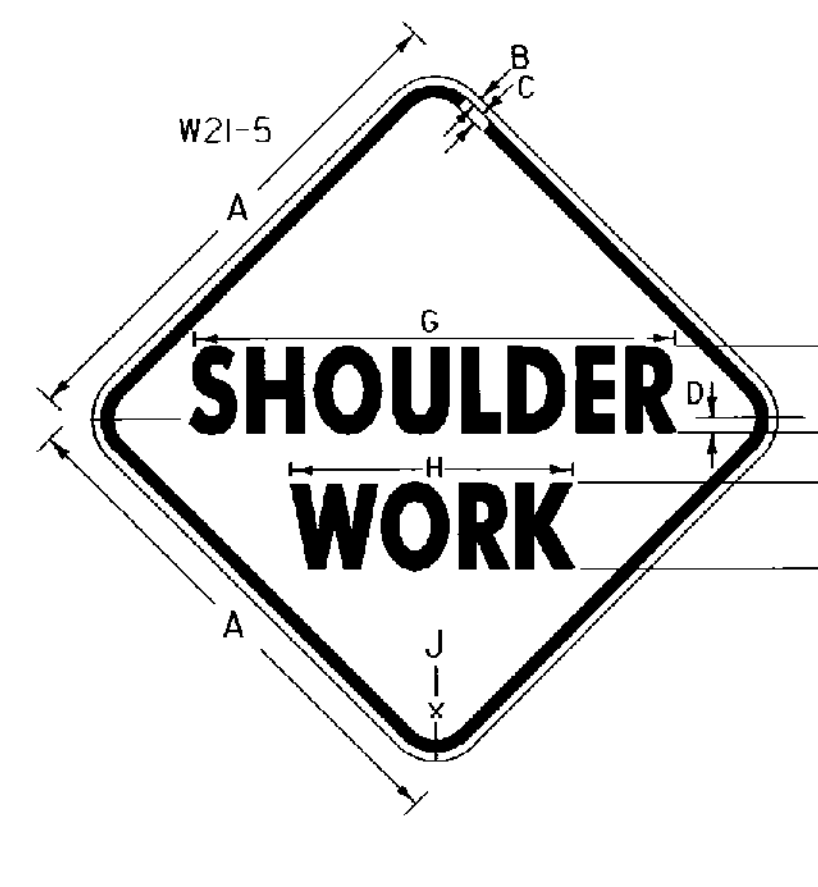


**4 - LANE HIGHWAY
MEDIAN MAINTENANCE**

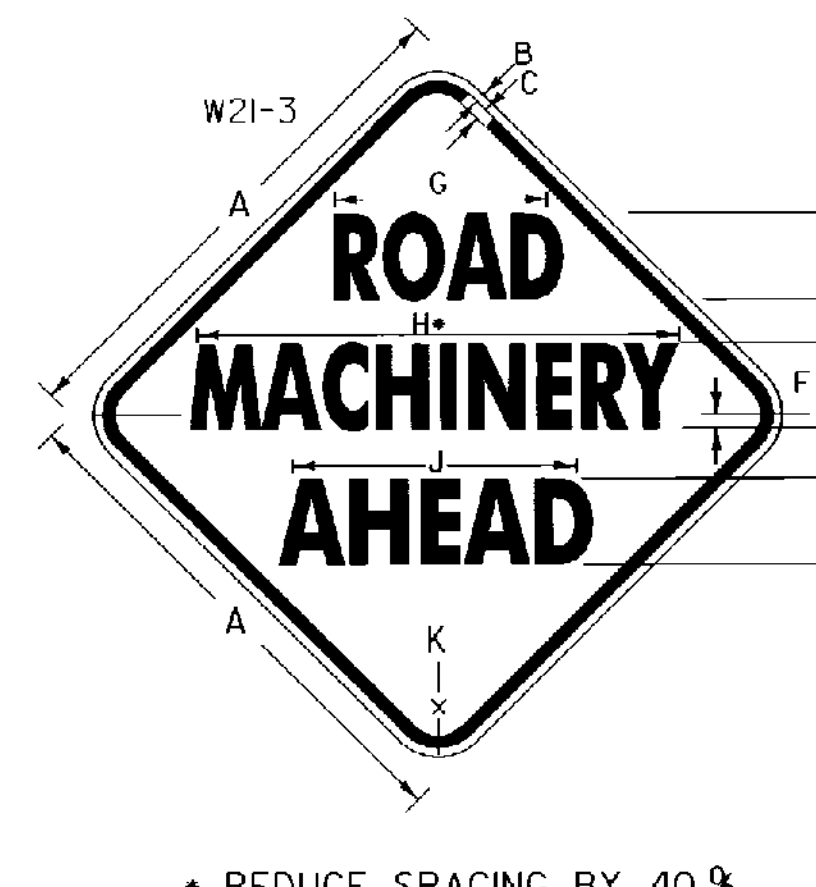
MOVE SIGNS AHEAD AS WORK PROGRESSES



| SIGN | DIMENSIONS (INCHES) | | | | | | | |
|--------|---------------------|-----|-------|-------|--------|-------|---|-------|
| | A | B | C | D | E | F | G | J |
| 2 LANE | 36 | 5/8 | 7/8 | 5 3/4 | 15 3/4 | 4 1/4 | | 2 1/4 |
| 4 LANE | 48 | 3/4 | 1 1/4 | 7 1/2 | 20 | 5 | | 3 |

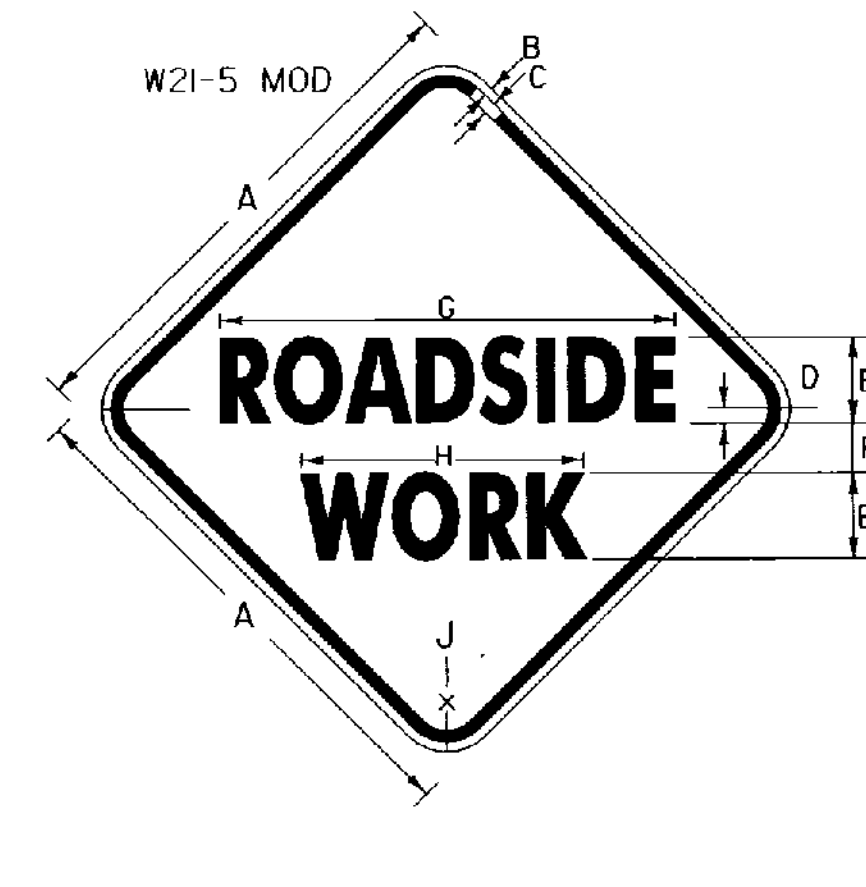


| SIGN | DIMENSIONS (INCHES) | | | | | | | |
|--------|---------------------|-----|-------|---|-----|-------|-------|--------|
| | A | B | C | D | E | F | G | J |
| 2 LANE | 36 | 5/8 | 7/8 | 1 | 5-D | 3 1/2 | 3 1/4 | 17 3/4 |
| 4 LANE | 48 | 3/4 | 1 1/4 | 1 | 7-C | 4 | 3 3/8 | 20 1/4 |

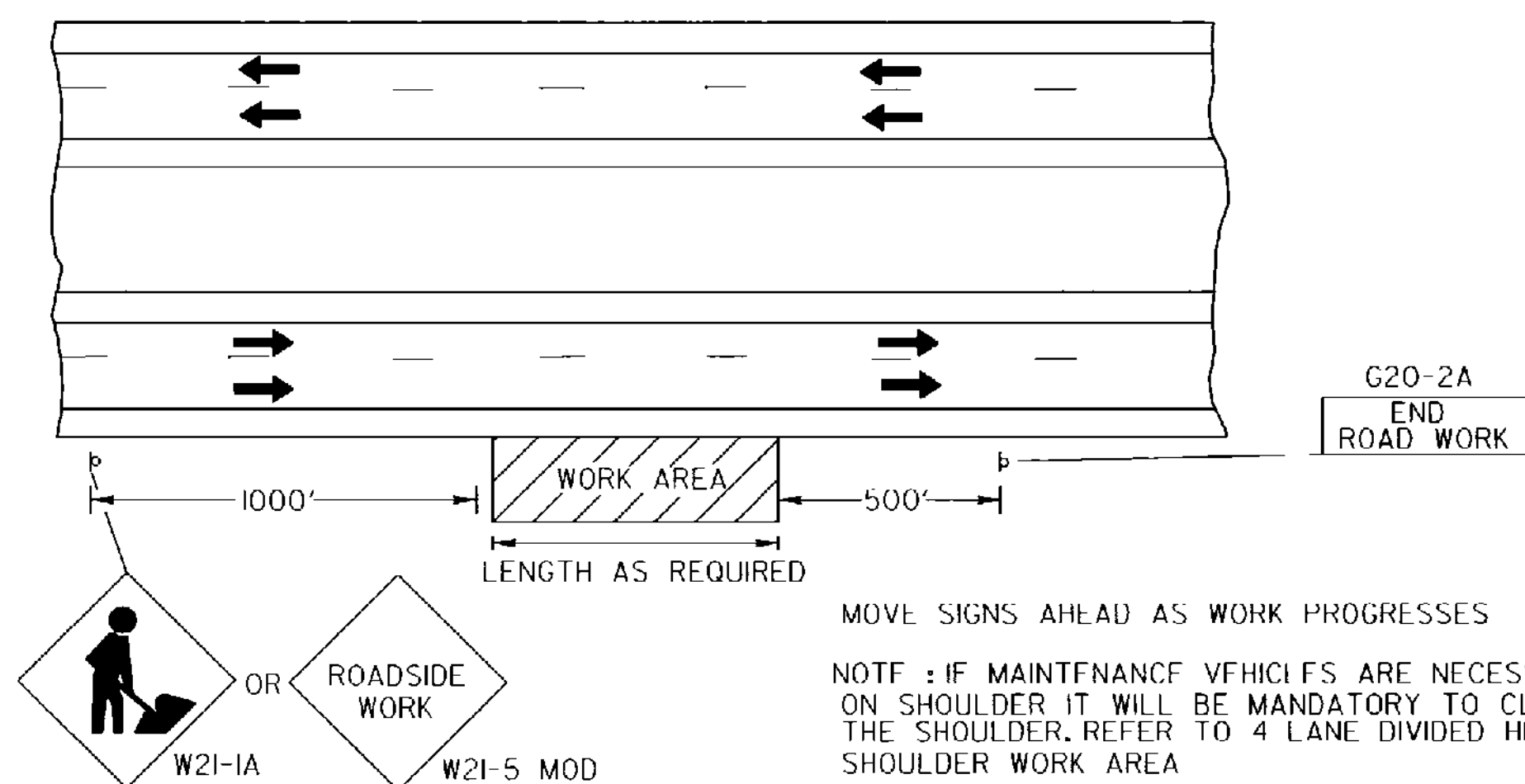


| SIGN | DIMENSIONS (INCHES) | | | | | | | | | |
|--------|---------------------|-----|-------|-----|---|-------|--------|-------|--------|--------|
| | A | B | C | D | E | F | G | H | J | K |
| 2 LANE | 36 | 5/8 | 7/8 | 5-D | 4 | 2 1/2 | 17 1/4 | 3 1/4 | 21 3/4 | 21 1/4 |
| 4 LANE | 48 | 3/4 | 1 1/4 | 7-D | 5 | 3 1/2 | 24 1/8 | 4 1/4 | 31 | 3 |

* REDUCE SPACING BY 40 %

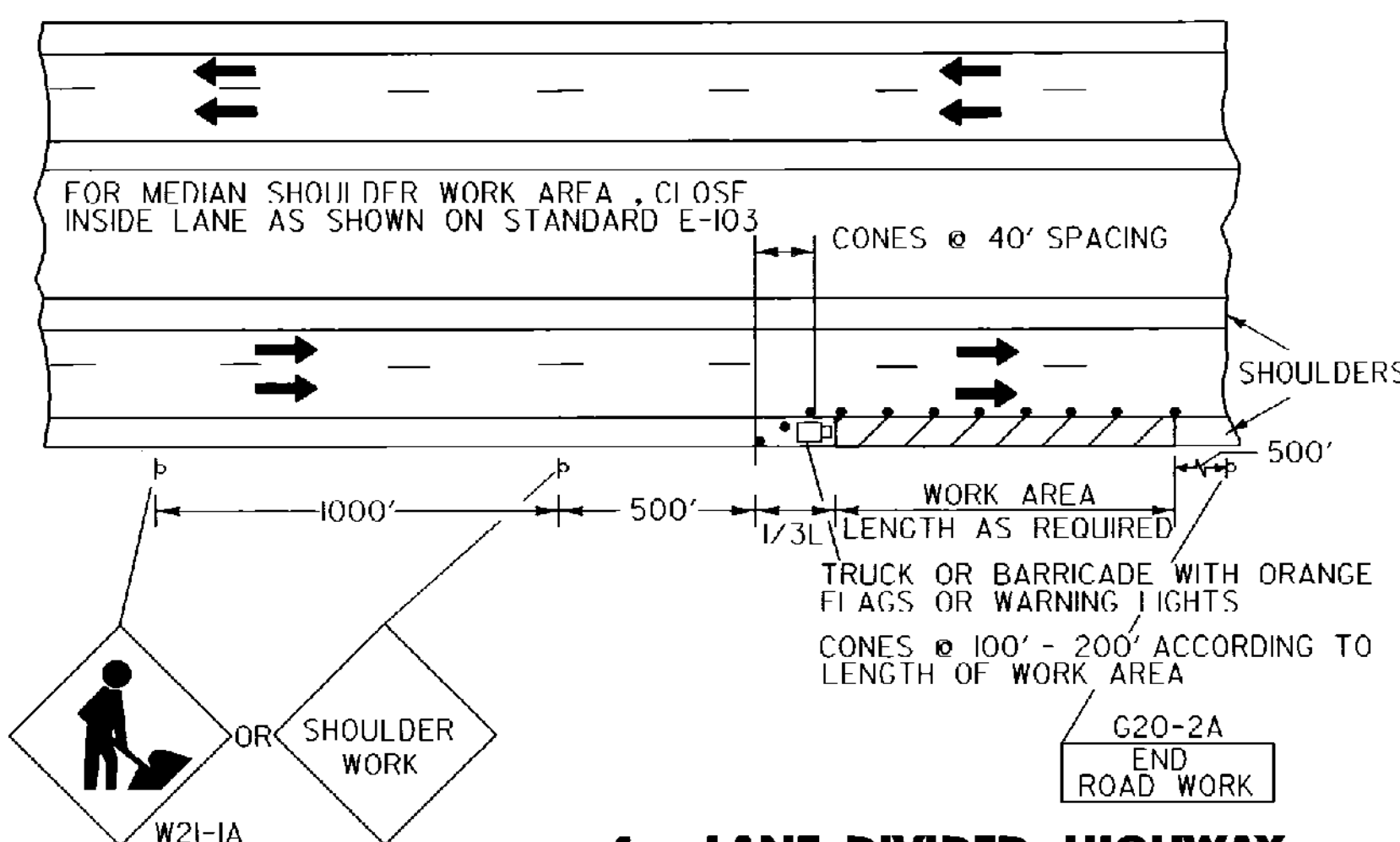


| SIGN | DIMENSIONS (INCHES) | | | | | | | |
|--------|---------------------|-----|-------|-----|-----|-------|-------|--------|
| | A | B | C | D | E | F | G | J |
| 2 LANE | 36 | 5/8 | 7/8 | 1/2 | 5-D | 3 1/2 | 3 1/4 | 17 3/4 |
| 4 LANE | 48 | 3/4 | 1 1/4 | 1 | 7-C | 4 | 3 5/8 | 20 1/4 |



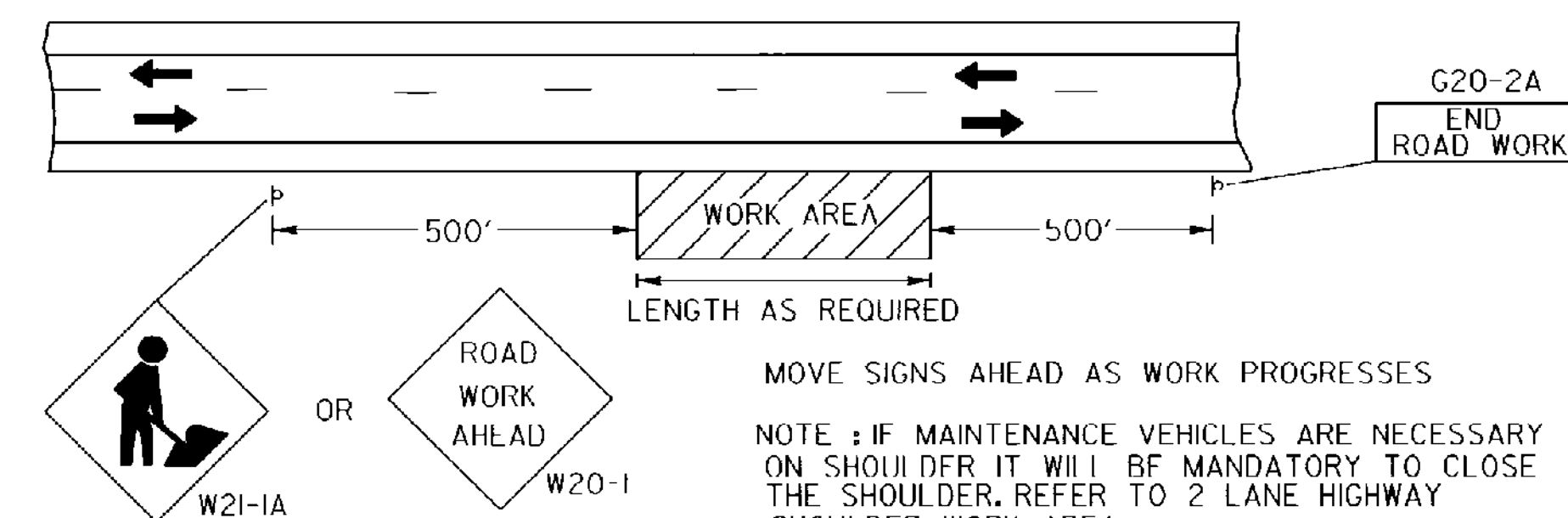
**4 - LANE HIGHWAY
MAINTENANCE OUTSIDE SHOULDER**

MOVE SIGNS AHEAD AS WORK PROGRESSES
NOTE: IF MAINTENANCE VEHICLES ARE NECESSARY ON SHOULDER IT WILL BE MANDATORY TO CLOSE THE SHOULDER. REFER TO 4 LANE DIVIDED HIGHWAY SHOULDER WORK AREA



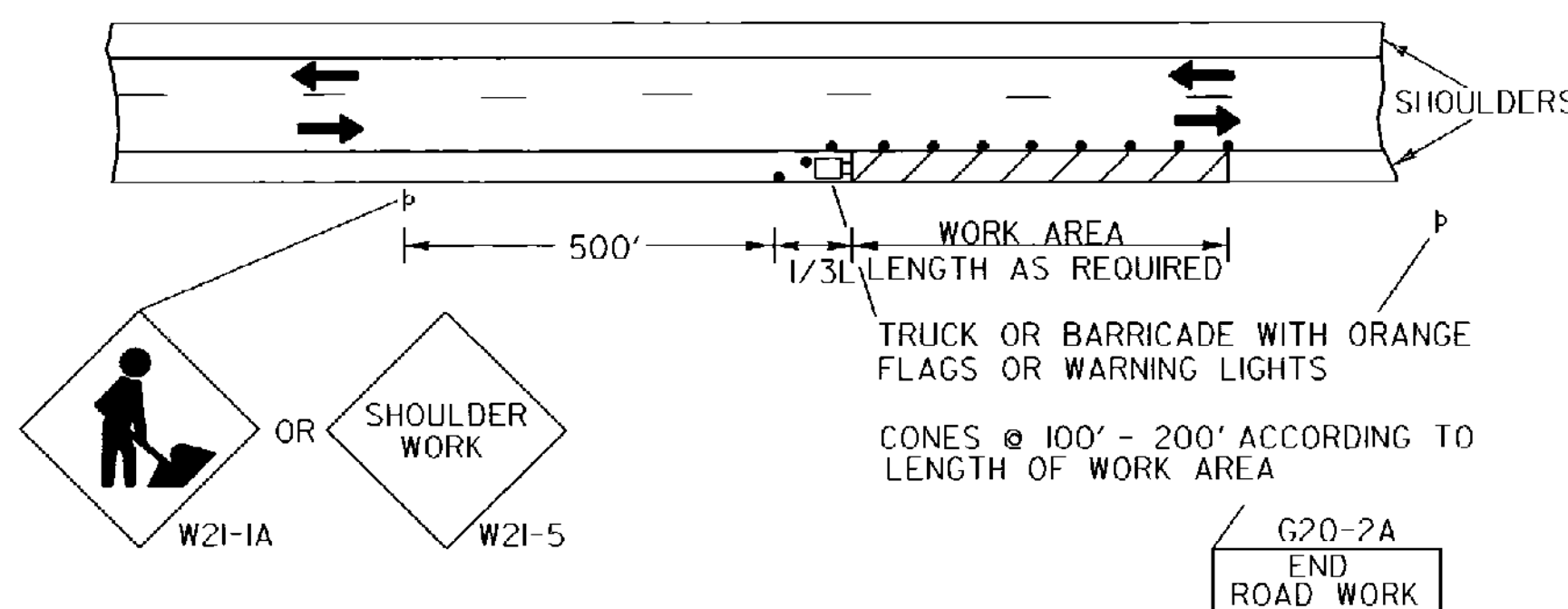
**4 - LANE DIVIDED HIGHWAY
SHOULDER WORK AREA**

FOR MEDIAN SHOULDER WORK AREA, CLOSE INSIDE LANE AS SHOWN ON STANDARD E-103
CONES @ 40' SPACING
TRUCK OR BARRICADE WITH ORANGE FLAGS OR WARNING LIGHTS
CONES @ 100' - 200' ACCORDING TO LENGTH OF WORK AREA



**2 - LANE HIGHWAY
MAINTENANCE OUTSIDE SHOULDER**

MOVE SIGNS AHEAD AS WORK PROGRESSES
NOTE: IF MAINTENANCE VEHICLES ARE NECESSARY ON SHOULDER IT WILL BE MANDATORY TO CLOSE THE SHOULDER. REFER TO 2 LANE HIGHWAY SHOULDER WORK AREA



**2 - LANE HIGHWAY
SHOULDER WORK AREA**

TRUCK OR BARRICADE WITH ORANGE FLAGS OR WARNING LIGHTS
CONES @ 100' - 200' ACCORDING TO LENGTH OF WORK AREA

NOTES:

REFLECTORIZATION:
ALL REFLECTIVE MATERIAL SHALL CONSIST OF ENCAPSULATED LENS REFLECTIVE SHEETING. THE TEXT AND BORDERS MAY BE SCREENED, LETTERING FILM, OR HAND PAINTED.

COLORS:
THE WARNING SIGNS SHOWN ON THIS SHEET SHALL HAVE A BLACK TEXT AND BORDER ON A REFLECTORIZED ORANGE BACKGROUND. THE ORANGE SHALL CONFORM WITH THE STANDARD COLORS ADOPTED BY THE AMERICAN ASSOCIATION OF STATE HIGHWAY AND TRANSPORTATION OFFICIALS AND APPROVED BY THE U.S. DEPT. OF TRANSPORTATION, FEDERAL HIGHWAY ADMINISTRATION.

TEXT DESIGN:
LETTERS, SPACING, AND TEXT DIMENSIONS SHALL CONFORM TO THE LATEST VERSION OF FHWA'S STANDARD ALPHABETS FOR HIGHWAY SIGNS AND PAVEMENT MARKINGS.

SPECIFICATIONS:
WARNING SIGNS SHALL MEET THE STANDARD STATE SPECIFICATIONS FOR SIGNS.

SIGN BASE MATERIAL:
THE SIGN BASE MATERIAL USED FOR THE WARNING SIGNS SHOWN ON THIS SHEET MAY BE OF ANY OF THE FOLLOWING, WITH MINIMUM THICKNESS AS NOTED:

| | 36X36 | 48X48 | INCHES |
|-------------------------------------|-------|-------|--------|
| (1) FLA1 SHEET ALUMINUM | 0.100 | 0.125 | INCHES |
| (2) HIGH DENSITY OVERLAPPED PLYWOOD | 5/8 | 3/4 | INCHES |
| (3) GALVANIZED SHEET STEEL | 1/4 | 1/2 | GAGE |

**OTHER STDS. E-100 E-103
REQUIRED:**

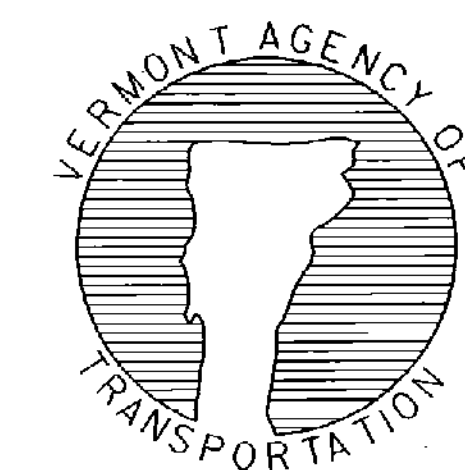
REVISIONS AND CORRECTIONS
 JAN. 26, 1972 - DATE OF ORIGINAL ISSUE
 FEB. 29, 1972 - REVISED PER DIRECTION OF THE FEDERAL HIGHWAY ADMINISTRATION
 MAY 14, 1974 - REFLECTIVE MATERIAL CHANGE
 JUN. 8, 1977 - REFLECTIVE MATERIAL NOTE CHANGE SIGNS REFERENCED TO NUMBERS IN M.U.T.C.D.
 AUG. 10, 1977 - PERSON WORKING SIGN CHANGED TO SYMBOL
 DEC. 9, 1981 - MINOR SIGN DIMENSION CHANGES
 FEB. 3, 1986 - UPDATED TO 1986 SPECIFICATIONS
 AUG. 08, 1995 - UPDATED TO 1993 CHAPTER 6 - M.U.T.C.D.
 MAR. 11, 1997 - NUMBER CHANGE FROM E-10 TO E-111
 REMOVED ROAD WORK AND END ROAD WORK

APPROVED

 DIRECTOR OF ENGINEERING

 DIRECTOR OF CONSTRUCTION AND MAINTENANCE

**MINOR
MAINTENANCE OPERATION**



**STANDARD
E-111**