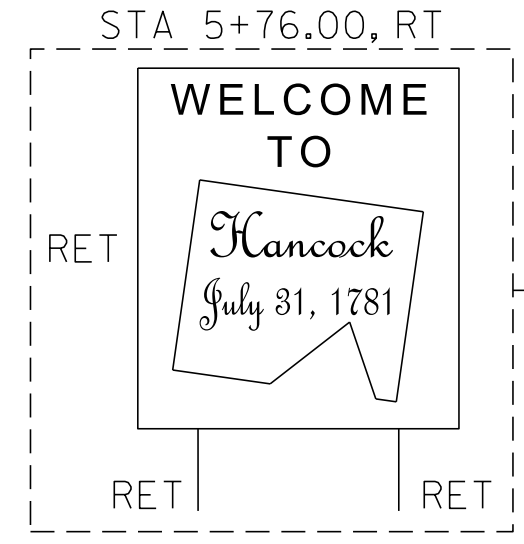
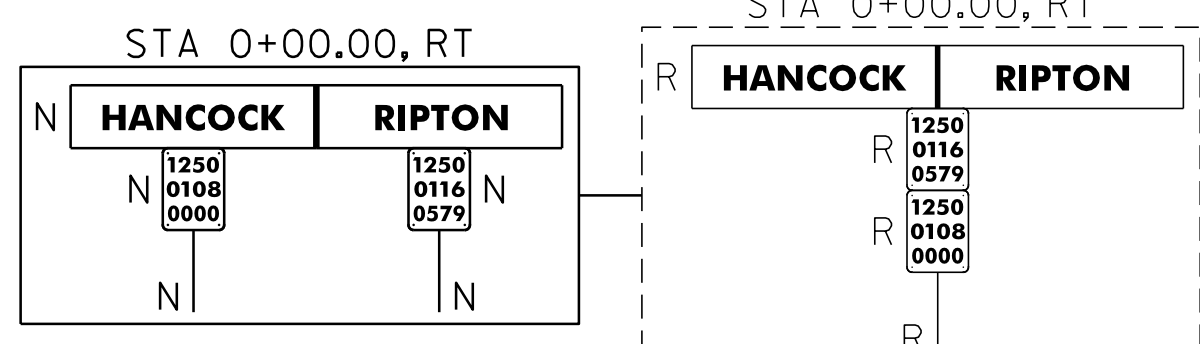
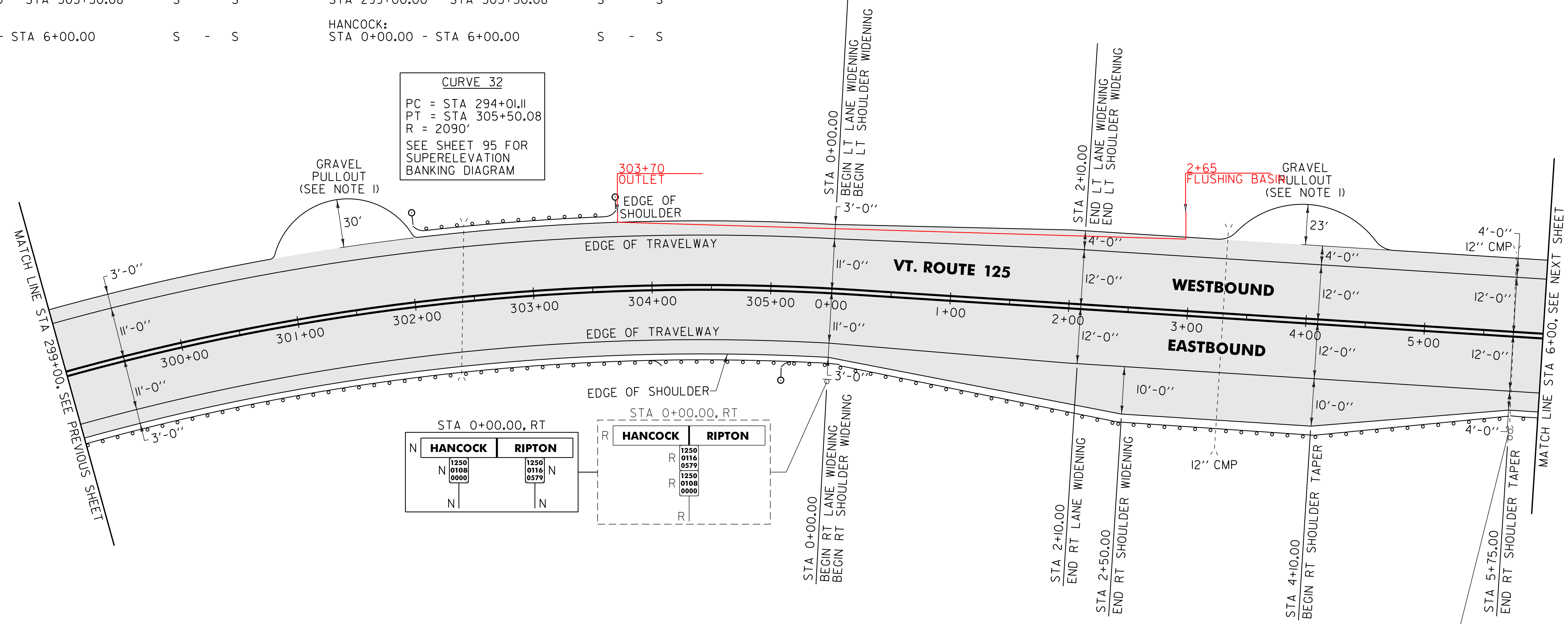


646.402 DURABLE 4 INCH WHITE LINE, THERMOPLASTIC
(ALL LINES WILL INCLUDE EDGE LINE BREAKS AND RADIUS FOR TOWN HIGHWAYS)
RIPTON:
STA 299+00.00 - STA 305+50.08 EDGE LINE LT & RT
HANCOCK:
STA 0+00.00 - STA 6+00.00 EDGE LINE LT & RT
646.412 DURABLE 4 INCH YELLOW LINE, THERMOPLASTIC
(ALL LINES WILL INCLUDE C/L BREAKS FOR TOWN HIGHWAYS) S=SOLID, D=DASHED
RIPTON:
STA 299+00.00 - STA 305+50.08 LT & RT S - S
HANCOCK:
STA 0+00.00 - STA 6+00.00 S - S

646.602 TEMPORARY 4 INCH WHITE LINE, PAINT
(ALL LINES WILL INCLUDE EDGE LINE BREAKS AND RADIUS FOR TOWN HIGHWAYS)
RIPTON:
STA 299+00.00 - STA 305+50.08 EDGE LINE LT & RT
HANCOCK:
STA 0+00.00 - STA 6+00.00 EDGE LINE LT & RT
646.612 TEMPORARY 4 INCH YELLOW LINE, PAINT
(ALL LINES WILL INCLUDE C/L BREAKS FOR TOWN HIGHWAYS) S=SOLID, D=DASHED
RIPTON:
STA 299+00.00 - STA 305+50.08 LT & RT S - S
HANCOCK:
STA 0+00.00 - STA 6+00.00 S - S

MM 5.786 = STA 305+50.08
MM 0.000 = STA 0+00.00
RIPTON HANCOCK

CURVE 32
PC = STA 294+01.11
PT = STA 305+50.08
R = 2090'
SEE SHEET 95 FOR SUPERELEVATION BANKING DIAGRAM



616.35 TREATED TIMBER CURB
RIPTON:
STA 299+20.0 - STA 300+60.0 RT (140.0 LF)
621.80 REMOVAL AND DISPOSAL OF GUARDRAIL
RIPTON:
STA 299+00.0 - STA 303+97.0 RT (397.0 LF)
STA 302+04.0 - STA 303+70.0 LT (166.0 LF)
STA 305+10.1 - STA 305+50.1 RT (40.0 LF)
HANCOCK:
STA 0+00.0 - STA 6+00.0 RT (600.0 LF)
676.10 DELINEATOR WITH STEEL POST
TYPE I WHITE
RIPTON:
STA 301+99.5 LT
STA 303+74.5 LT
STA 305+05.0 RT

900.620 SPECIAL PROVISION (MANUFACTURED TERMINAL SECTION, FLARED/WEATHERING)
RIPTON:
STA 301+99.5 - STA 302+37.0 LT
STA 303+37.0 - STA 303+74.5 LT
~~STA 305+05.0 - STA 305+42.5 RT~~
900.620 SPECIAL PROVISION (MANUFACTURED TERMINAL SECTION, TANGENT/WEATHERING)
~~RIPTON:
STA 303+49.0 - STA 303+99.0 RT~~
900.640 SPECIAL PROVISION (STEEL BEAM GUARDRAIL, WEATHERING)
RIPTON:
STA 299+00.0 - STA 303+49.0 RT (449.0 LF)
STA 302+37.0 - STA 303+37.0 LT (100.0 LF)
STA 305+42.5 - STA 305+50.1 RT (7.6 LF)
HANCOCK:
STA 0+00.0 - STA 6+00.0 RT (600.0 LF)

AREA TO BE RECLAIMED

SIGN LEGEND
R = REMOVE
S = SALVAGE
N = NEW
RET = RETAIN
B-B = BACK TO BACK
EXISTING = -----
NEW = _____

NOTE:
I. PAVE THE ENTIRE EXISTING GRAVEL PULLOUT WITH 1 1/2" TYPE IVS. ANY REQUIRED EXCAVATION SHALL BE PERFORMED AS DIRECTED BY THE RESIDENT ENGINEER AND PAID FOR UNDER ITEM 608.25 ALL PURPOSE EXCAVATOR RENTAL, TYPE I.

NOT TO SCALE

PROJECT LAYOUT SHEET #24	PROJECT NAME: RIPTON - HANCOCK	PLOT DATE: 18-SEP-2013 17:10
	PROJECT NUMBER: STP 2803(1)	DRAWN BY: C.A.K.
	FILE NAME: p08cl60.dgn	CHECKED BY: D.W.E.
	PROJECT LEADER: D.E.G.	SHEET 83 OF 114

DESIGNED BY: M.J.M.
IPARM FILE: p08cl60i24.i