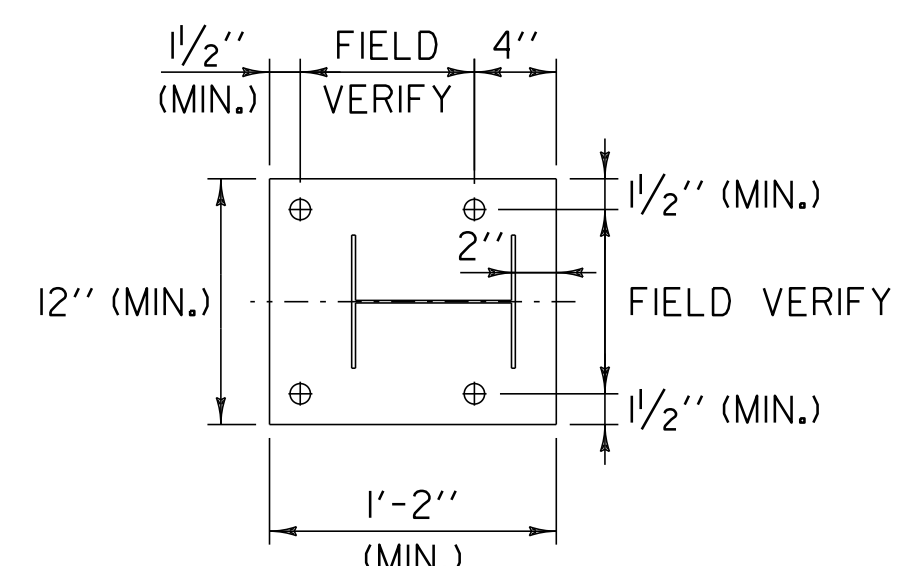
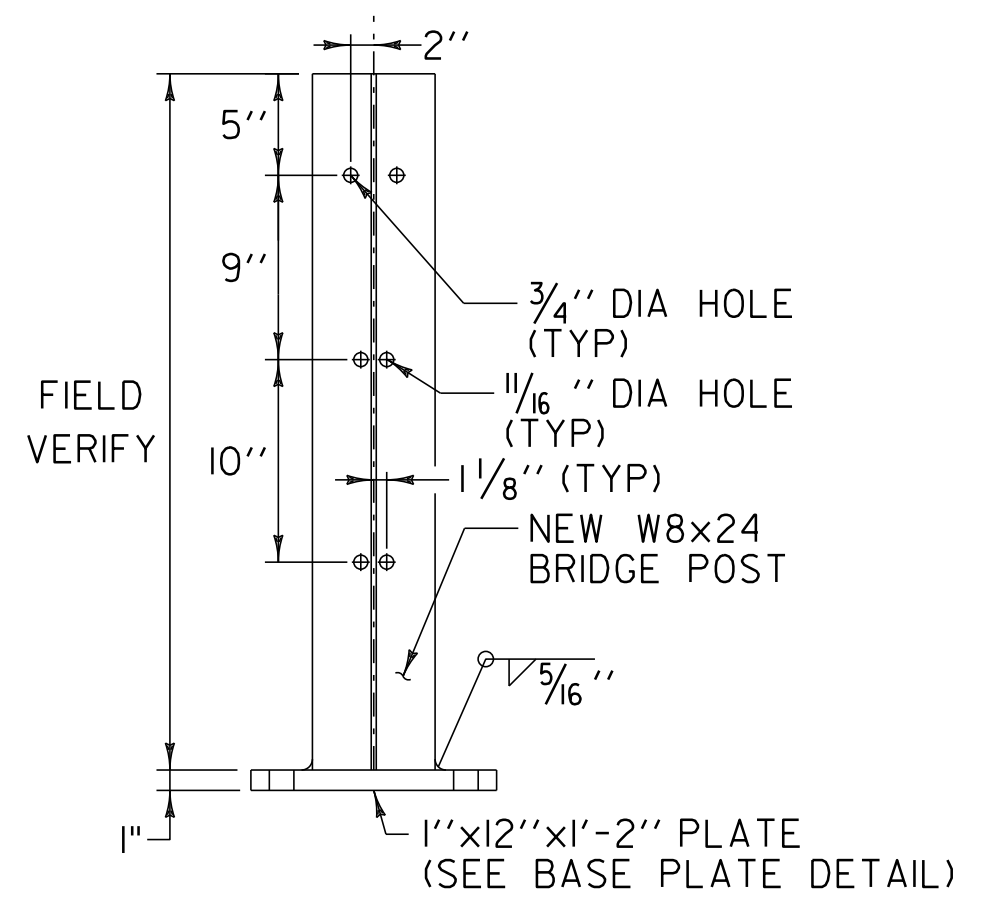


BR 13 MIDDLEBURY MM 2.639 = STA 139+33.92

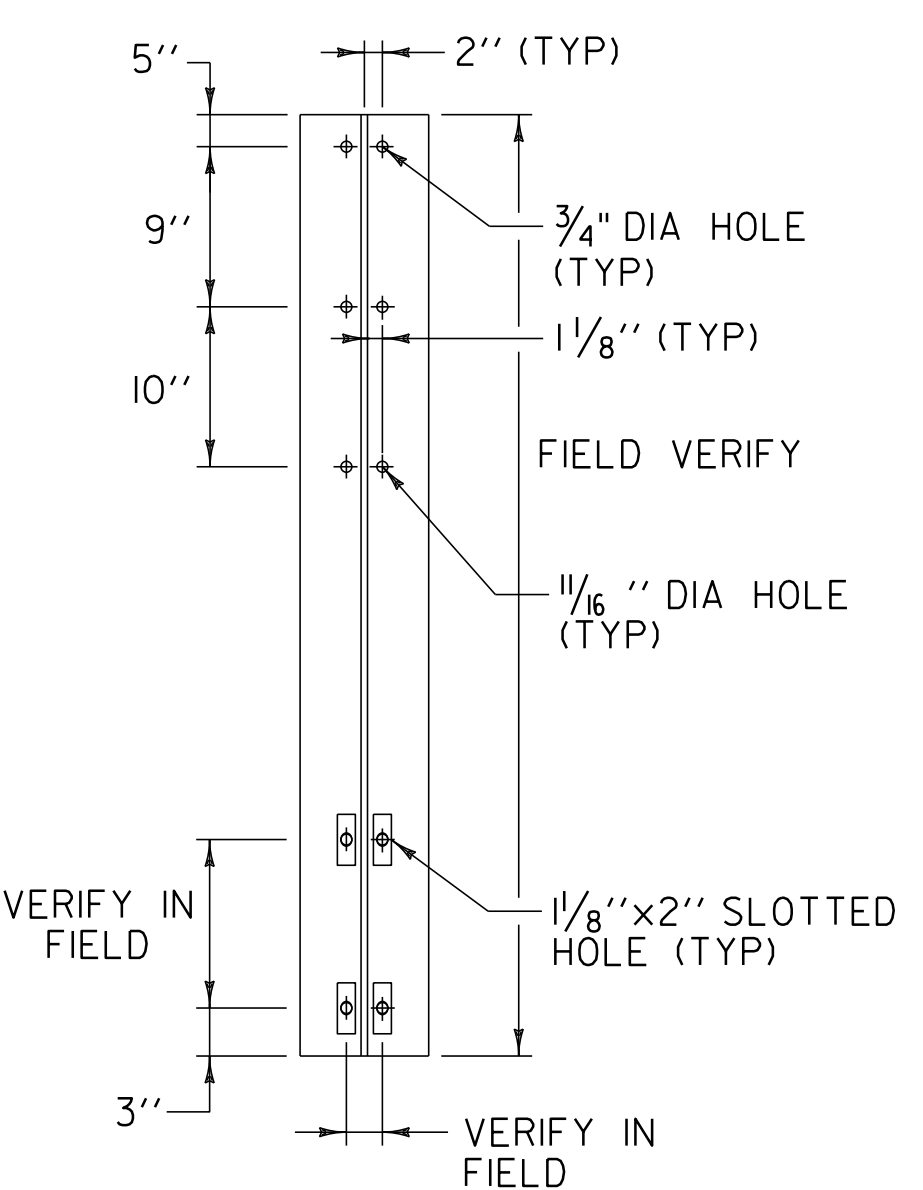
- NOTES:
1. LOCATION OF EXISTING ANCHOR BOLTS TO BE VERIFIED IN THE FIELD BY THE CONTRACTOR PRIOR TO ORDERING BRIDGE POSTS.
 2. POSTS SHALL BE SHOP CUT AND DRILLED PRIOR TO GALVANIZING.
 3. SEE STANDARD SHEET SB-R6-82 FOR ADDITIONAL DETAILS.
 4. NON-SHRINKING GROUT SHALL CONFORM TO SUBSECTION 707.03 MORTAR TYPE IV OF THE STANDARD SPECIFICATIONS. PACK UNDER BASE PLATE. PAYMENT WILL BE INCIDENTAL TO ITEM 525.60 BRIDGE RAILING REPAIR, TYPE III.
 5. ALL GUARDRAIL WORK TO BE DONE ON THIS BRIDGE SHALL BE COMPLETED ON OR BEFORE JUNE 30, 2010.



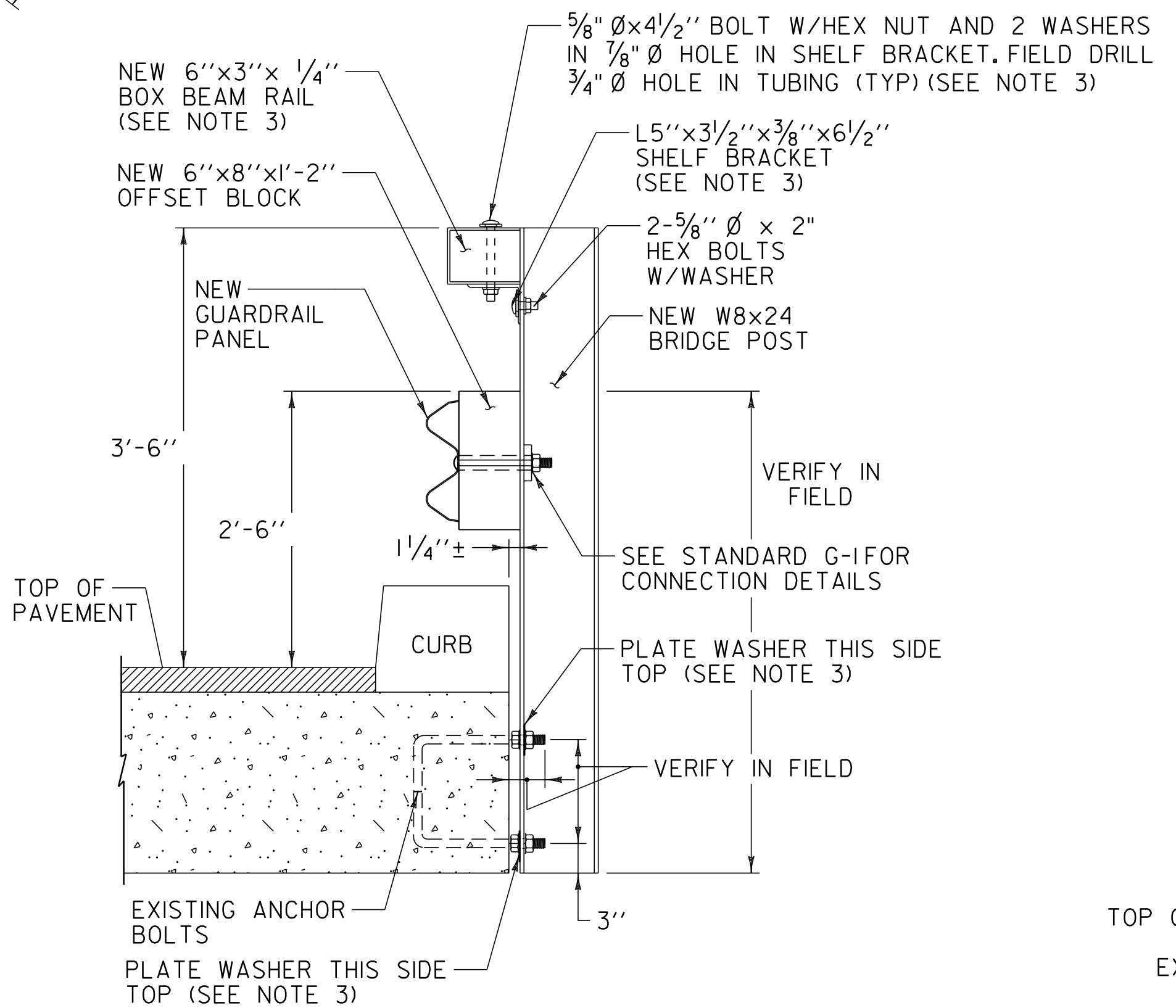
BASE PLATE DETAIL



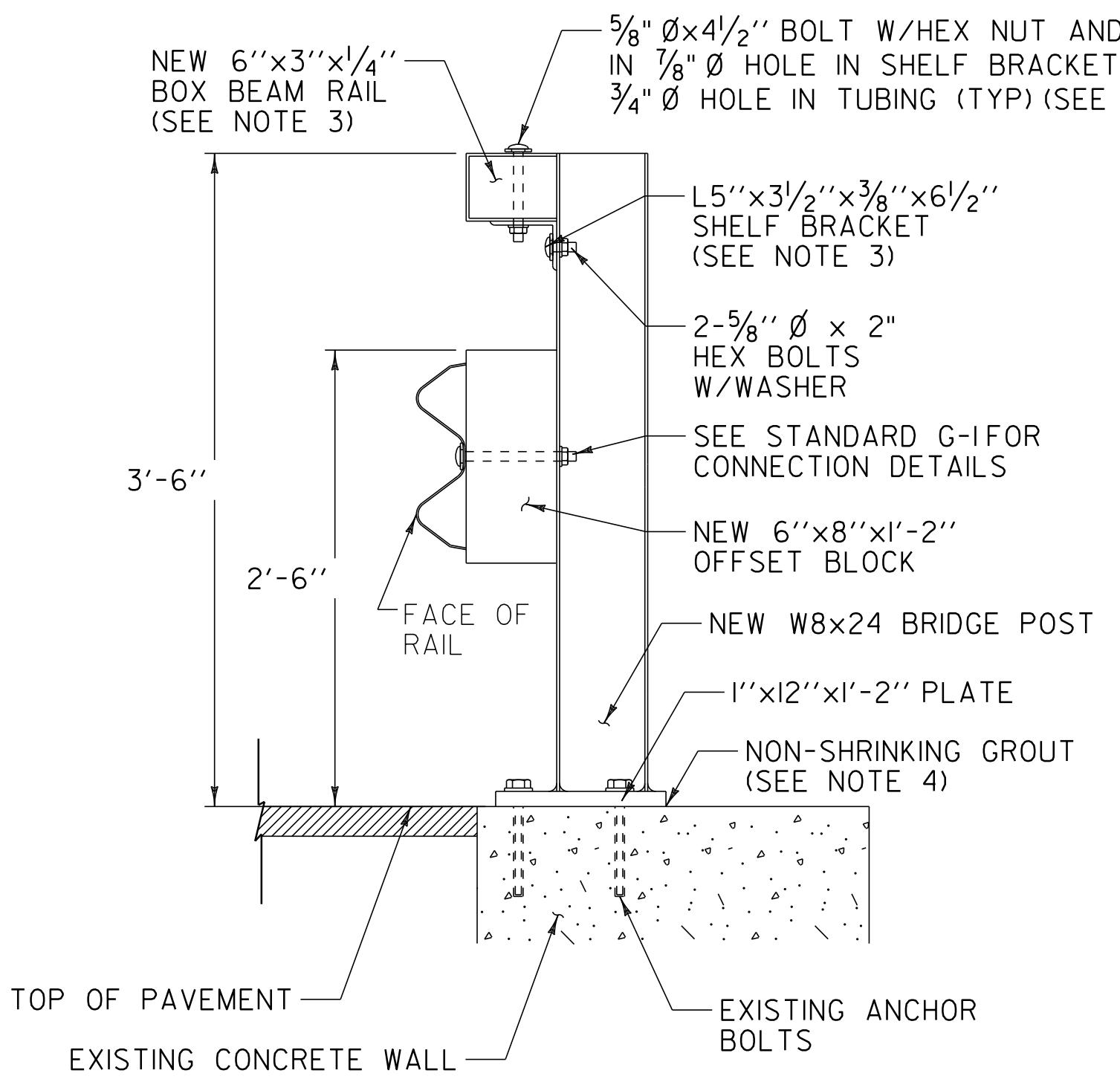
TOP MOUNTED BRIDGE POST DETAIL



FASCIA MOUNTED POST DETAIL



FASCIA MOUNTED STEEL POST W/BOX BEAM HAND RAIL



TOP MOUNTED STEEL POST W/BOX BEAM HAND RAIL

NOT TO SCALE

BRIDGE DETAIL SHEET #2

PROJECT NAME: MIDDLEBURY	PLOT DATE: 18-SEP-2013 17:09
PROJECT NUMBER: STP 2627(1)	DRAWN BY: C.A.K.
FILE NAME: p06c222.dgn	CHECKED BY: D.W.E.
PROJECT LEADER: D.E.G.	SHEET 48 OF 114
DESIGNED BY: M.J.L.	
IPARM FILE: p06c222b3.i	