

PLAN

- GENERAL NOTES**
- Reference Standards
AASHTO "Standard Specifications for Highway Bridges" LRFD
ASTM C1433
 - Design Parameters
Live load AASHTO HL-93
Earth Cover 15' to 35'
Concrete Design strength $f'_c = 5000$ psi
Unit weight = 150 pcf
Reinforcing ASTM A615 (rebar), grade 60
ASTM A185 (WVF) $f_y = 60$ ksi
Soil Unit weight = 140 pcf
Minimum lateral pressure coefficient 25
Maximum lateral pressure coefficient 50
Cover to reinforcing 1 1/2" u n o
 - Dimensions include a joint gap Actual culvert piece length is 1/2" shorter (i.e. C2 = 7'-6")
 - No dampproofing supplied by CSI
 - DBS are Dowel Bar Splicers and DI are Dowel Ins
 - Water Repellent Silane shall be applied to all exposed surfaces of the Box, Wingwalls, and Headwalls also exposed inside surface of the Box starting at the opening at each end and extending 3 feet into the Box, including bottom surface of the Top Slab and top surface of the Bottom Slab
 - Headwalls not designed for impact
 - Two foot wide strip of membrane waterproofing shall be installed at each box joint (Top and Sides)
 - ALL EXPOSED EDGES SHALL HAVE A 3/4" HAMMER

BOX CULVERT PIECE SCHEDULE (MX-FA5000SC)

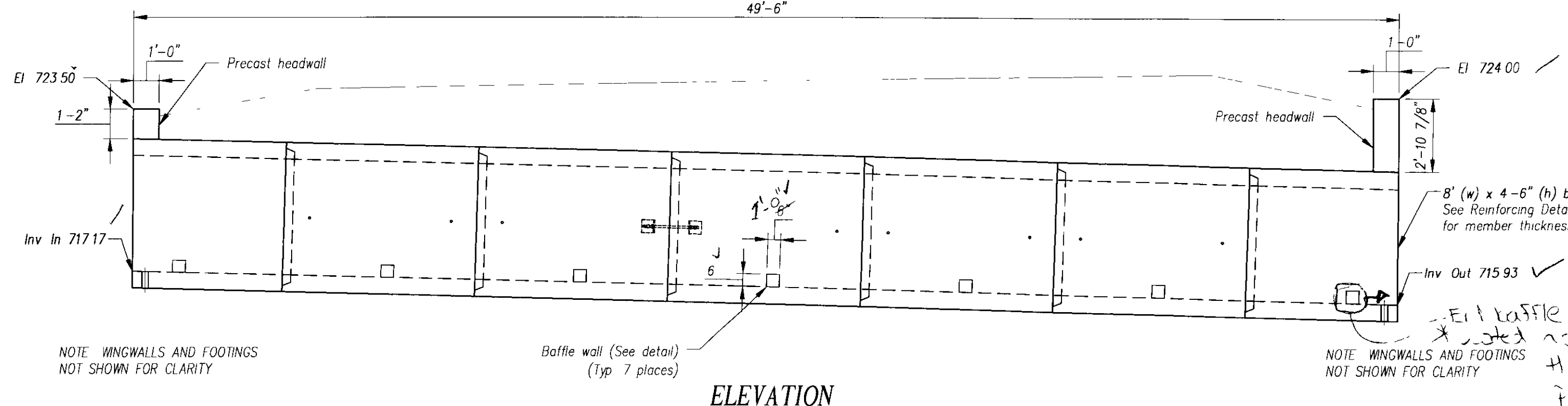
MARK	QTY	LENGTH	YDS	WEIGHT
C1	1	5.89'	4.80	9.72 TONS
C2	5	7.50'	5.44	11.01 TONS
C3	1	5.89'	5.17	10.48 TONS

WINGWALL PIECE SCHEDULE (MX-FA4000SC)

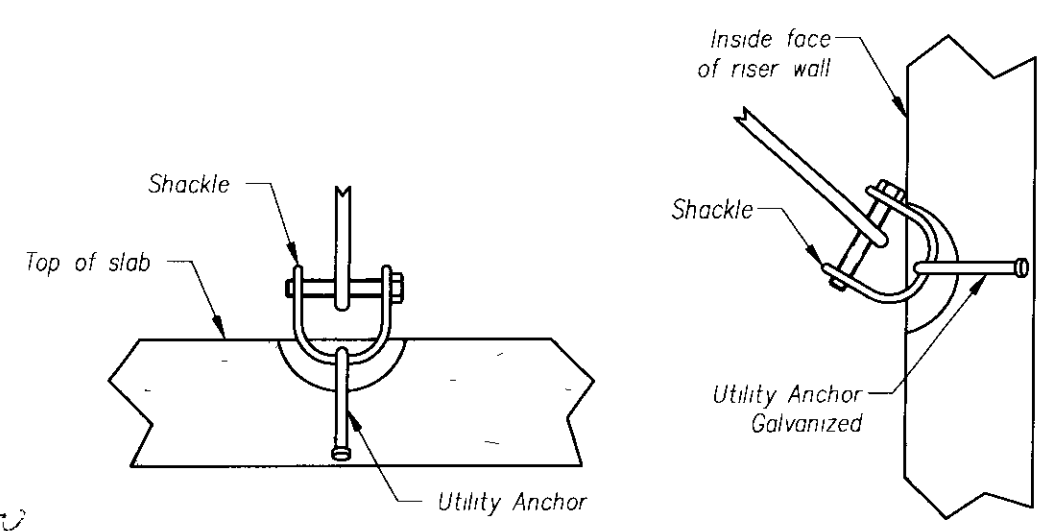
MARK	QTY	LENGTH	YDS	WEIGHT
WW1	1	7.75'	1.12	3.17 TONS
WW2	1	7.92'	1.02	2.97 TONS
WW3	1	10.08'	1.66	4.26 TONS
WW4	1	11.33'	1.80	4.55 TONS
F1	1	12.38'	2.88	5.83 TONS
F2	1	12.83'	2.88	5.83 TONS
F3	1	14.92'	3.48	7.05 TONS
F4	1	16.04'	3.84	7.78 TONS

ALL WORK AND MATERIALS, DELIVERY AND GRouting SHALL BE THE RESPONSIBILITY OF THE CONTRACTOR AND SHALL BE PAID FOR UNLESS NOTED

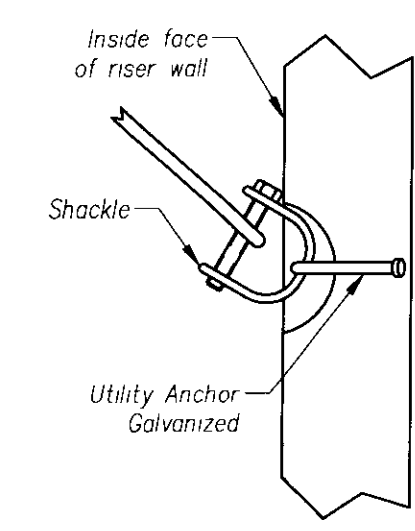
RECEIVED
 CTD BY: LSJ OK'D BY:
JUN 25 2009
 REBUILT APPROVED/NOTED
 BY: CPW DATE: 7/2/09



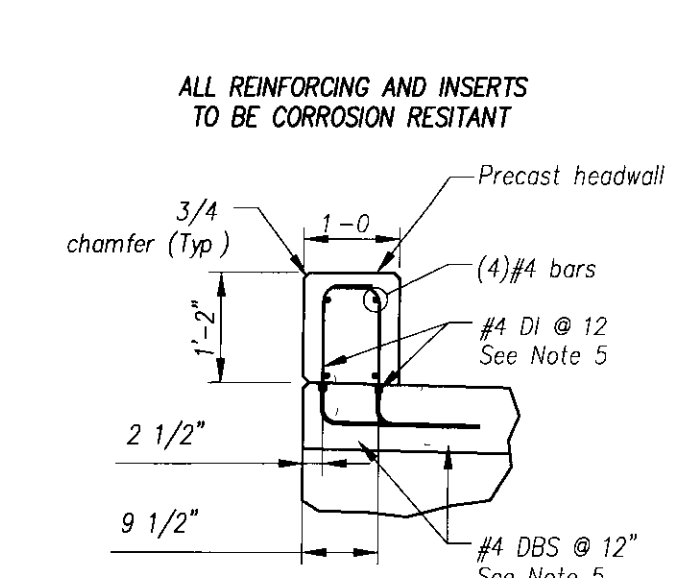
ELEVATION



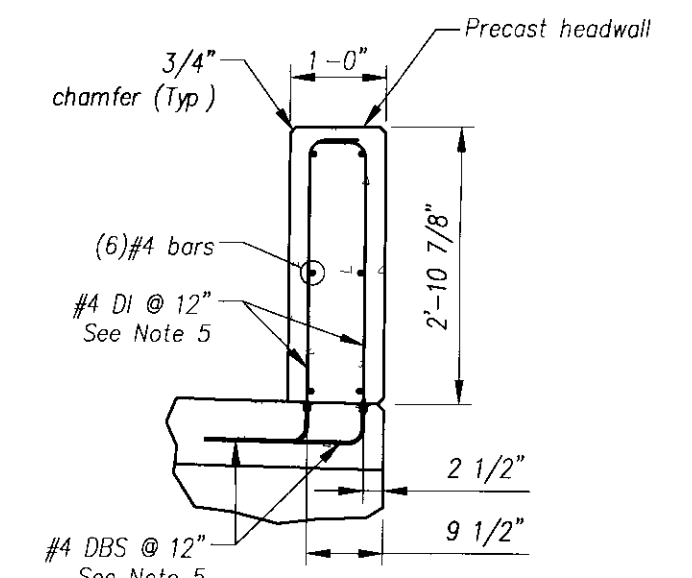
CULVERT LIFTING DETAIL



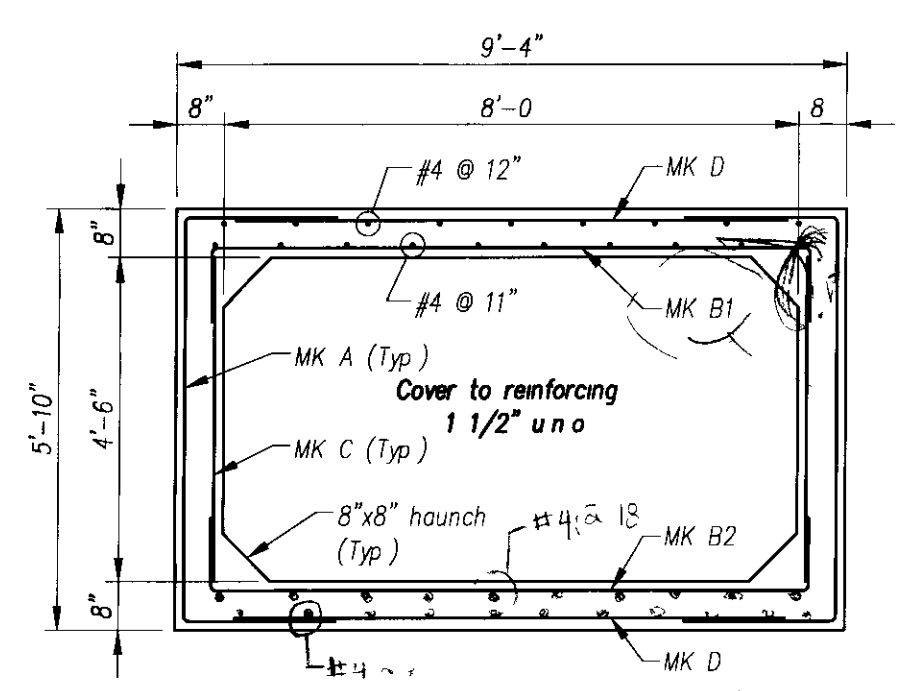
WINGWALL LIFTING DETAIL



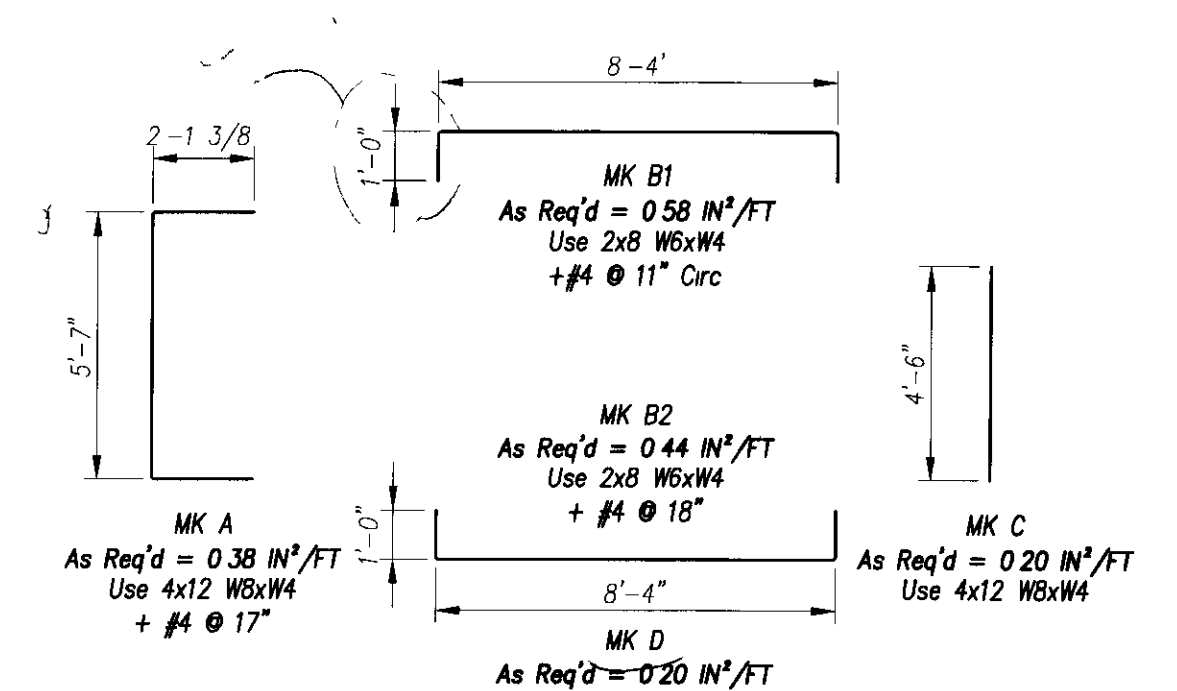
SECTION A
1 of 2



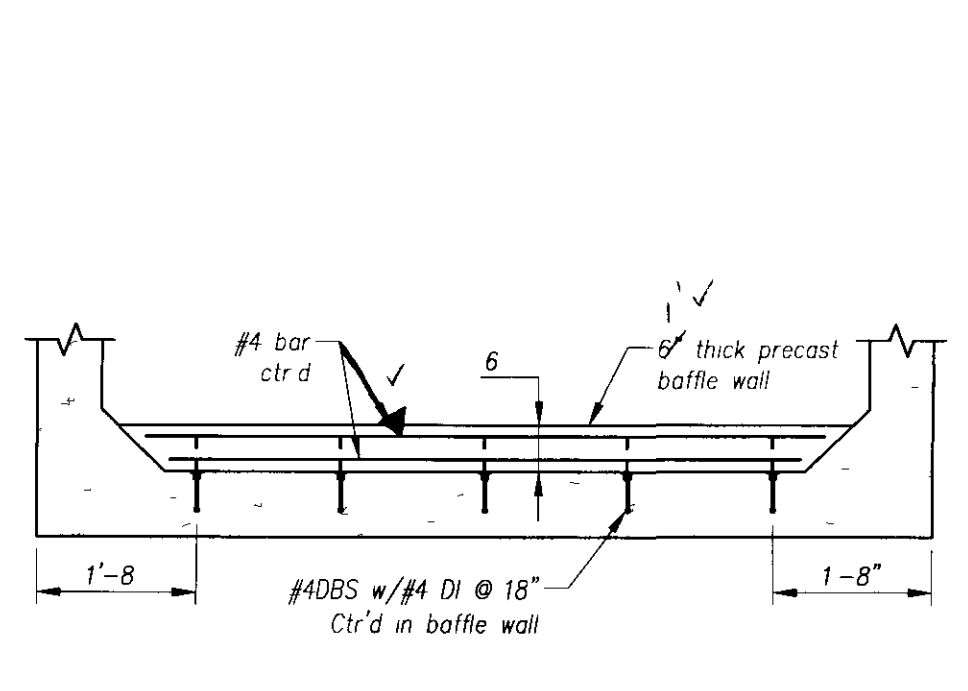
SECTION B
1 of 2



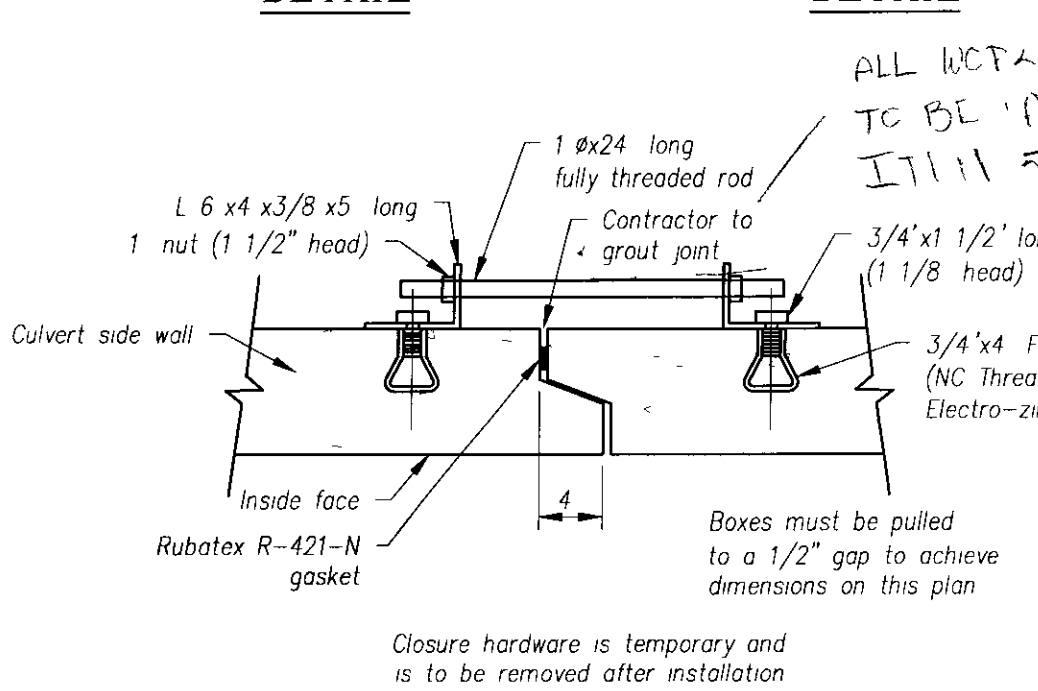
REINFORCING DETAIL



BENDING SCHEDULE



BAFFLE WALL DETAIL



CLOSURE HARDWARE DETAIL

Contractor to verify that all information shown on drawings has been thoroughly checked, complies with the contract documents and is adequate to meet the field conditions. Some dimensions and details may differ slightly from contract drawings to accommodate the manufacturing or design process. Approval of this drawing indicates that any deviation from the contract documents has been reviewed and found to be acceptable. Production will not commence until receipt of signed, approved shop drawings.

This drawing contains information proprietary to CONCRETE SYSTEMS, INC. The drawing is disclosed with the understanding that it will be retained in confidence and its use limited solely to the purpose for which it is disclosed. It is understood that no reproduction of this drawing is authorized without permission from CONCRETE SYSTEMS, INC. and that it will be returned to CONCRETE SYSTEMS, INC. upon request.

10			
9			
8			
7			
6			
5			
4			
3			
2			
1	06/23/09	Revised piece designations in plan view	MS
Rev	Date	DESCRIPTION	By
		REVISIONS	

This drawing is based upon information provided from the following documents and/or sources

Engineer
Project No
Drawings
Specifications
Other Sources

CSI
 Concrete Systems Inc
 9 Commercial St. Hudson, NH 03051
 Phone 603-889-4163
 Fax 603-888-2417

STATE AGENCY

Drawn By: F. LOPEZ Date: 05/01/2009
 Checked By: B. KOLAWOLE Date: 05/01/2009
 Approved By: _____ Date: _____

GW TATRO CONSTRUCTION
 VT/DOIR CULVERT
 FAIRLEE, VT

BOX CULVERT LAYOUT & DETAILS

Drawing No: C19768-LO1-A REV 1
 Quantity: _____ Project No: STPCULV13 SHEET 1 OF 2