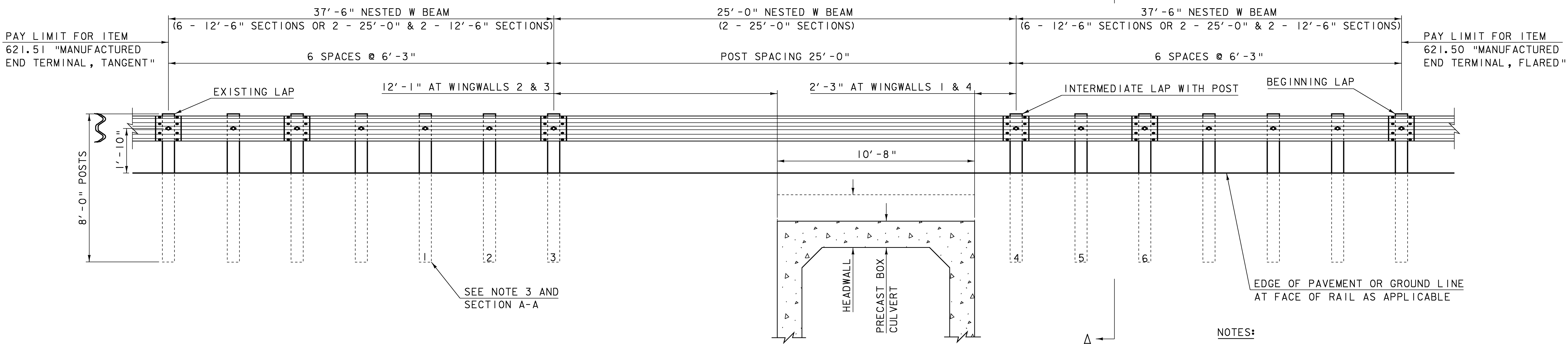




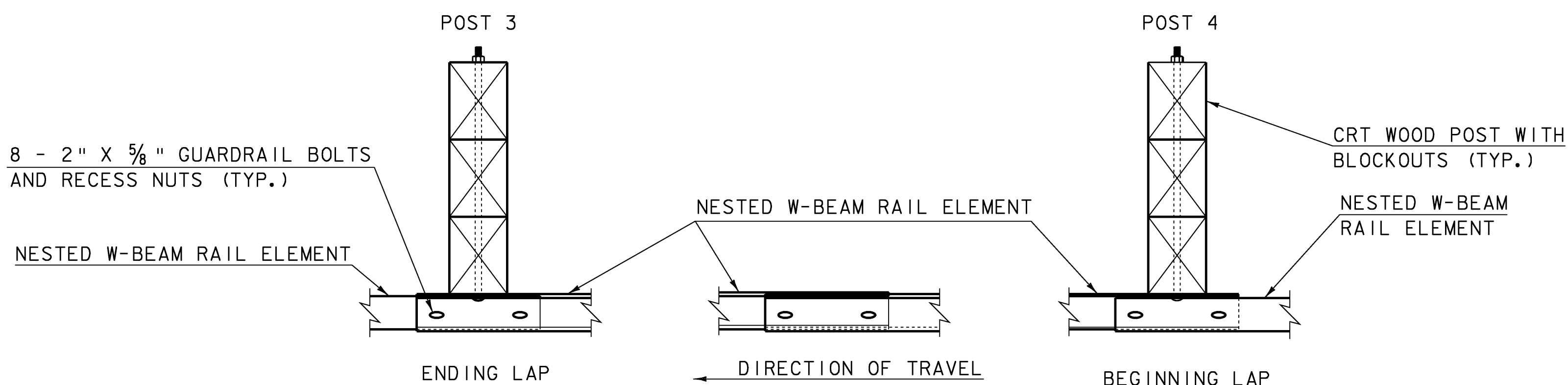
NESTED RAILING PLAN VIEW
(NTS)



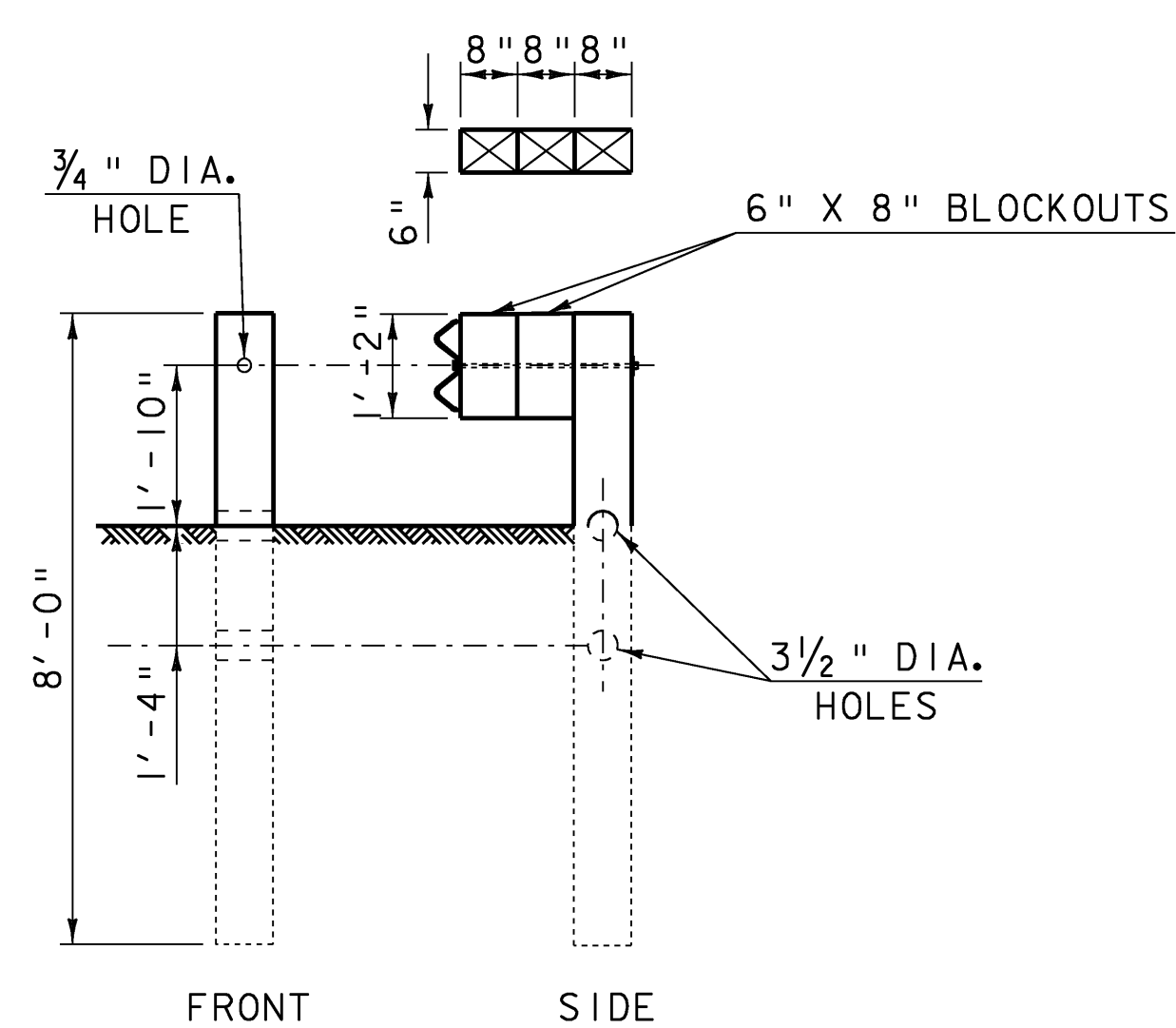
NESTED RAILING ELEVATION VIEW
(NTS)

NOTES:

1. RAIL MEETS TEST LEVEL 3 REQUIREMENTS OF NCHRP REPORT 350.
2. 25'-0" RAIL LENGTH WILL BE USED TO ELIMINATE THE INTERMEDIATE LAP WITHOUT A POST.
3. POSTS 1 THRU 6 ARE BREAKAWAY CONTROLLED RELEASING TERMINAL (CRT) POSTS, SEE SECTION A-A FOR DETAILS.
4. POSTS 1 THRU 6 HAVE TWO, 6" X 8" BLOCKOUTS. SEE SECTION A-A FOR DETAILS.
5. ON POSTS 1 THRU 6, GUARDRAIL BOLT "D", AS SHOWN ON STD G1, SHALL BE 26" LONG.
6. ON ALL POSTS WHERE THE RAIL IS DOUBLE-NESTED GUARDRAIL BOLT "A", AS SHOWN ON STD G1, SHALL BE 2" LONG.
7. ALL POSTS WHERE THE RAIL IS DOUBLE-NESTED SHALL BE 8 FEET LONG TO PROVIDE FOR A 2'-8" SLOPE BREAKLINE.
8. SEE STD G1 FOR ADDITIONAL GUARDRAIL DETAILS.



INTERMEDIATE LAP WITHOUT POST
(NTS)



SECTION A-A
(POSTS 1 THRU 6)
(SEE NOTES 3 & 4)

PROJECT NAME: FAIRLEE
PROJECT NUMBER: STP CULV (13)

FILE NAME: s08c060r-all.dgn
PROJECT LEADER: C.P.WILLIAMS
DESIGNED BY: L.J.STONE
NESTED HDSB GUARDRAIL DETAILS

PLOT DATE: 11-MAR-2009
DRAWN BY: L.J.STONE
CHECKED BY: E.L.RUSTAY
SHEET 17 OF 26