

REMOVAL AND DISPOSAL OF EXISTING GUARDRAIL
 STA 86+48.00 LT - 87+20.00 LT
 STA 85+68.00 RT - 86+80.00 RT

HEAVY DUTY STEEL BEAM GUARDRAIL,
 GALVANIZED/NESTED WITH 8 FEET POSTS
 STA 86+13.00 LT - 87+11.00 LT
 STA 86+05.00 RT - 87+07.00 RT

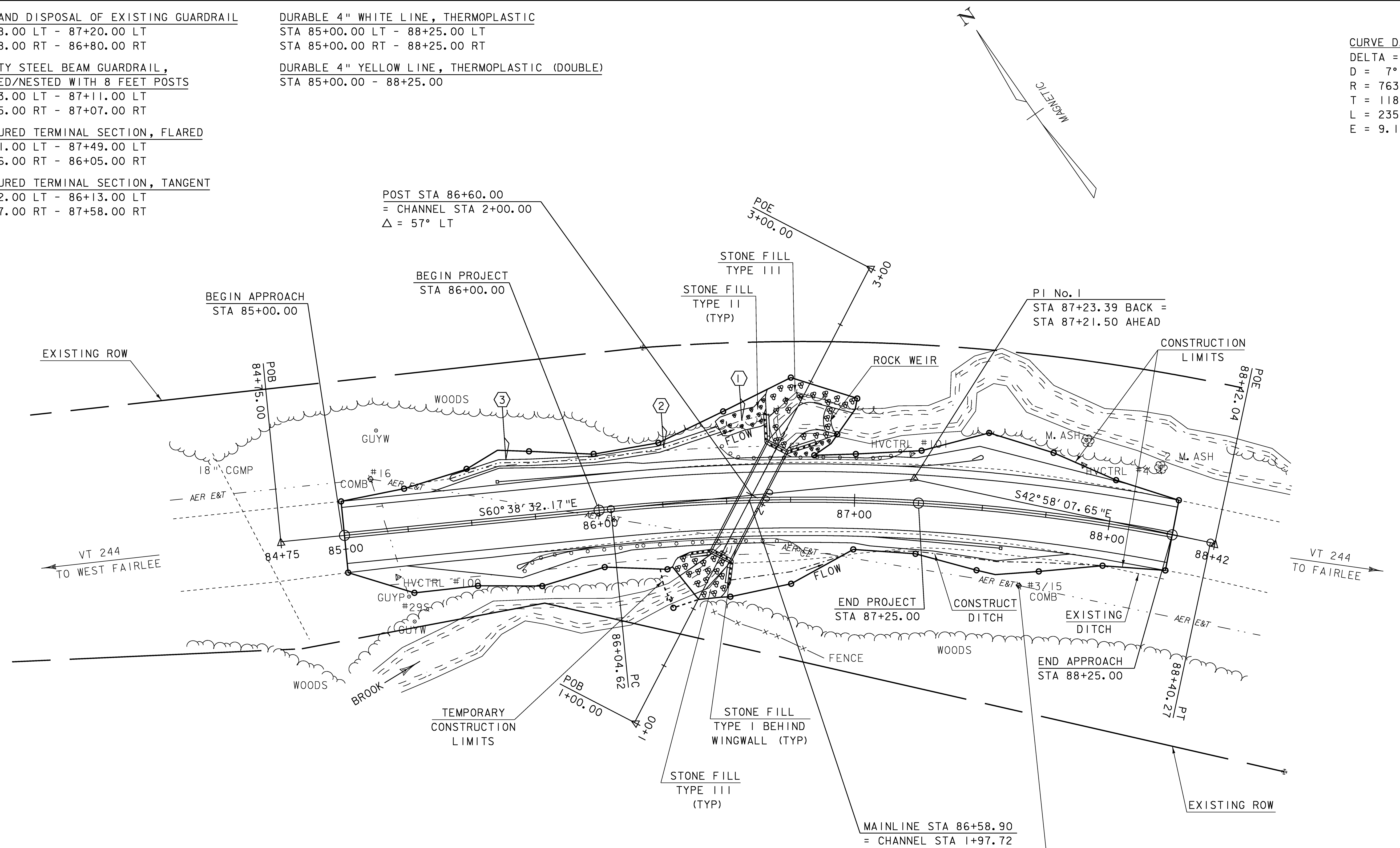
MANUFACTURED TERMINAL SECTION, FLARED
 STA 87+11.00 LT - 87+49.00 LT
 STA 85+66.00 RT - 86+05.00 RT

MANUFACTURED TERMINAL SECTION, TANGENT
 STA 85+62.00 LT - 86+13.00 LT
 STA 87+07.00 RT - 87+58.00 RT

DURABLE 4" WHITE LINE, THERMOPLASTIC
 STA 85+00.00 LT - 88+25.00 LT
 STA 85+00.00 RT - 88+25.00 RT

DURABLE 4" YELLOW LINE, THERMOPLASTIC (DOUBLE)
 STA 85+00.00 - 88+25.00

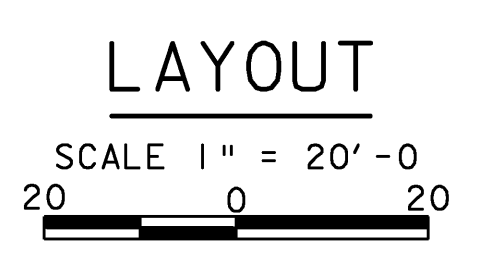
CURVE DATA VT 244
 DELTA = 17°40'25"
 D = 7°30'00"
 R = 763.94'
 T = 118.77'
 L = 235.65'
 E = 9.18'



NEW DRAINAGE DITCH
 ① STA 86+48.27 LT 28.20 - 86+66.23 LT 35.24

CONSTRUCT GRASS SWALE
 ② STA 85+43.22 LT 18.00 - 86+48.27 LT 28.20

TEMPORARY EROSION MATTING
 ③ STA 85+43.22 LT 18.00 - 86+48.27 LT 28.20



PROJECT NAME: FAIRLEE
 PROJECT NUMBER: STP CULV (13)

FILE NAME: s08c060bdr.dgn
 PROJECT LEADER: C.P.WILLIAMS
 DESIGNED BY: L.J.STONE
 LAYOUT

PLOT DATE: 11-MAR-2009
 DRAWN BY: L.J.STONE
 CHECKED BY: E.L.RUSTAY
 SHEET 8 OF 26

EXISTING BRIDGE DATA
 4H X 6W METAL PIPE
 CULVERT BUILT IN 1948
 CULVERT BARREL LENGTH = 56FT.
 WATERWAY AREA = 18SF.

BM#2
 RR SPIKE IN POLE
 ELEV: 722.57