

GPS CONTROL POINTS

HVCTRL #1  
 HEBBARD AZ MK  
 NORTH = 507225.134  
 EAST = 1719892.381  
 ELEV. = 767.524

GENERAL LOCATION, FAIRLEE, VT.

TO REACH FROM THE I-91 BRIDGES OVER VT ROUTE 244 GO NORTHWEST ALONG VT ROUTE 244 FOR 0.9 MI (1.4 KM) TO THE INTERSECTION OF HEBBARD ROAD LEFT AND BRAGG HILL ROAD RIGHT. CONTINUE STRAIGHT AHEAD AND GO NORTHWEST ALONG VT ROUTE 244 FOR 0.25 MI (0.4 KM) TO THE INTERSECTION OF A PAVED DRIVE LEFT LEADING TO HOUSE NO 1425. CONTINUE STRAIGHT AHEAD AND GO NORTHWEST ALONG VT ROUTE 244 FOR ABOUT 30 M (98.4 FT) TO THE SITE OF THE MARK ON THE LEFT.

THE MARK IS SET 7 CM (3 INCHES) BELOW GROUND SURFACE IN THE TOP OF A FENO STYLE MONUMENT.

IT IS 5.0 M (16.4 FT) WEST SOUTHWEST OF AND ABOUT 0.2 M (0.7 FT) LOWER THAN THE CENTERLINE OF VT ROUTE 244, 32.4 M (106.3 FT) NORTH NORTHWEST OF THE CENTERLINE OF THE PAVED DRIVE, 6.3 M (20.7 FT) SOUTHEAST OF POLE NO 6/37/3/24, 22.8 M (74.8 FT) NORTH OF THE NORTH CORNER OF HOUSE NO 1425, 11.4 M (37.4 FT) SOUTH SOUTHEAST OF THE CENTER OF THE WEST SOUTHWEST (INLET) END OF A 45 CM (18 INCHES) DIAMETER METAL CULVERT, AND 0.3 M (1.0 FT) EAST NORTHEAST OF A FIBERGLASS WITNESS POST.

HVCTRL #2  
 HEBBARD

NORTH = 506482.208  
 EAST = 1720913.094  
 ELEV. = 765.666

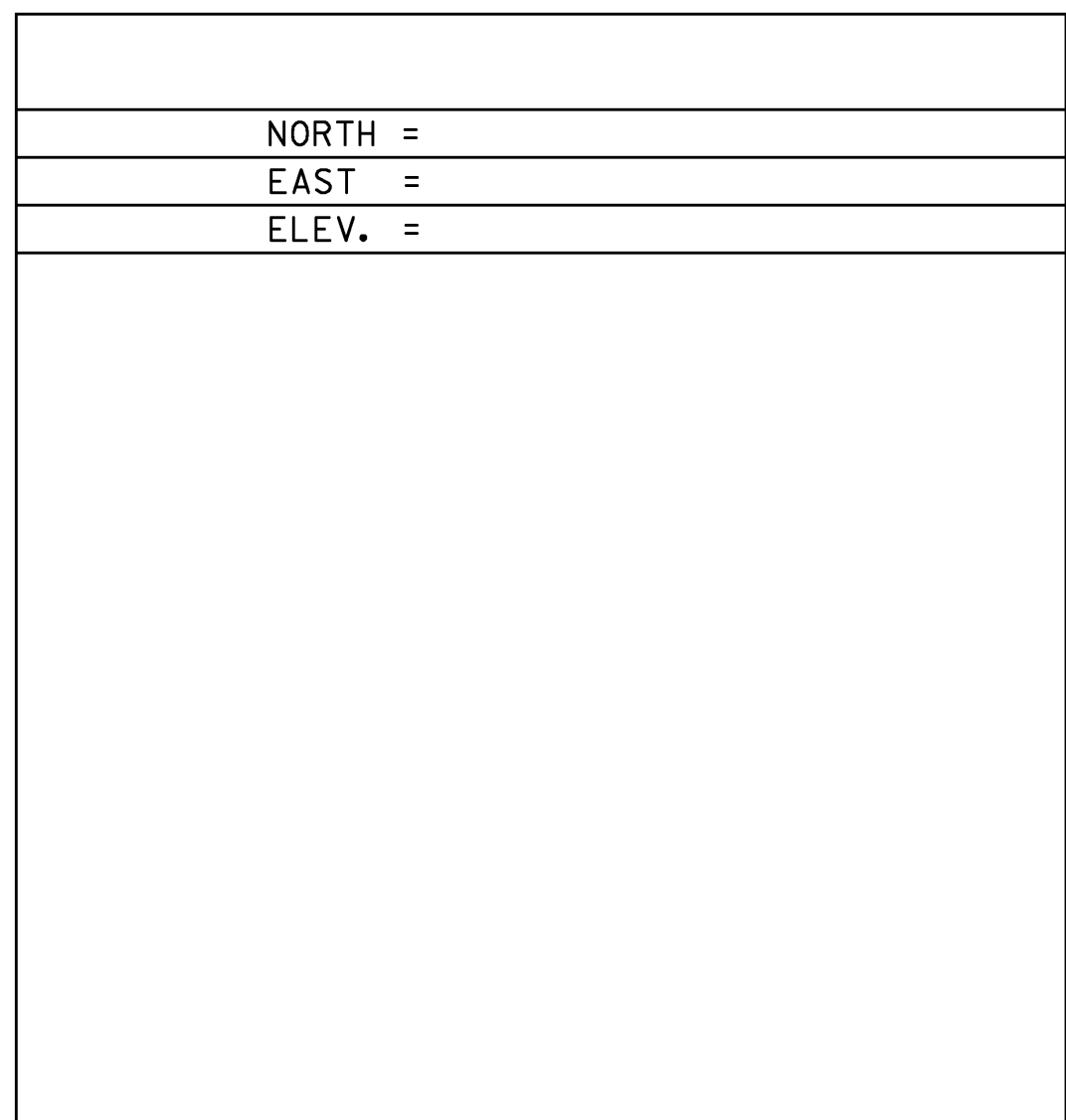
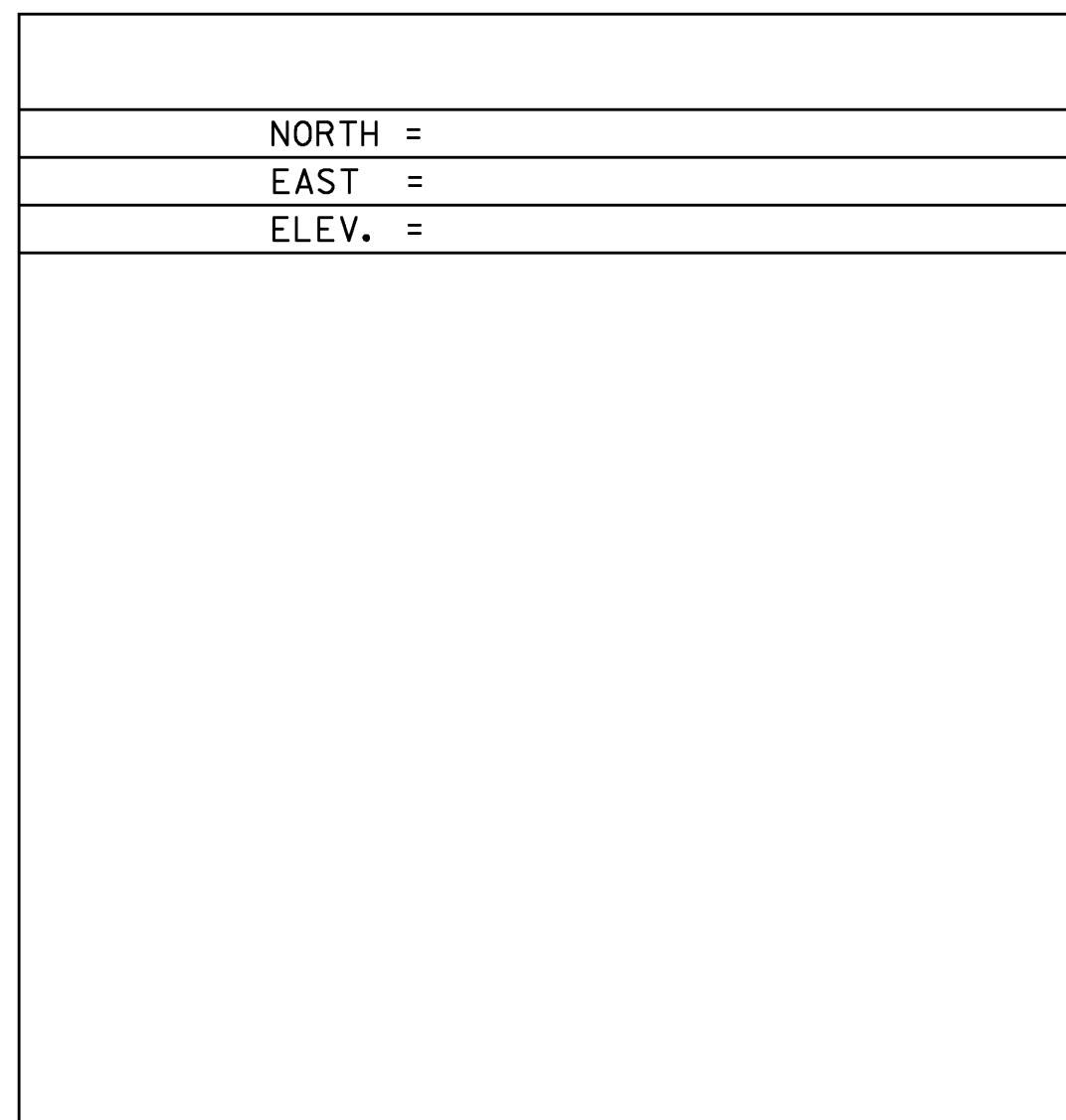
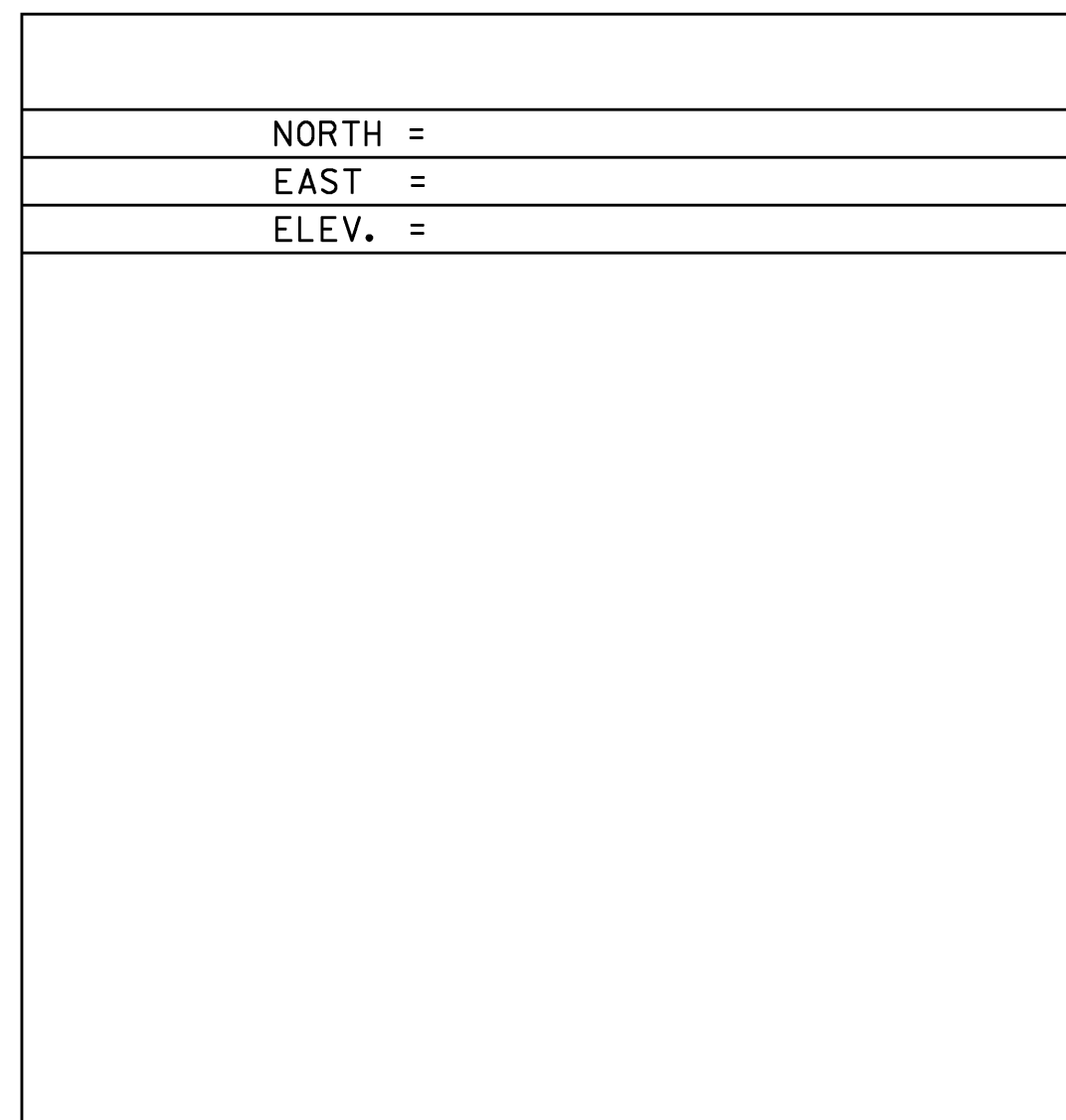
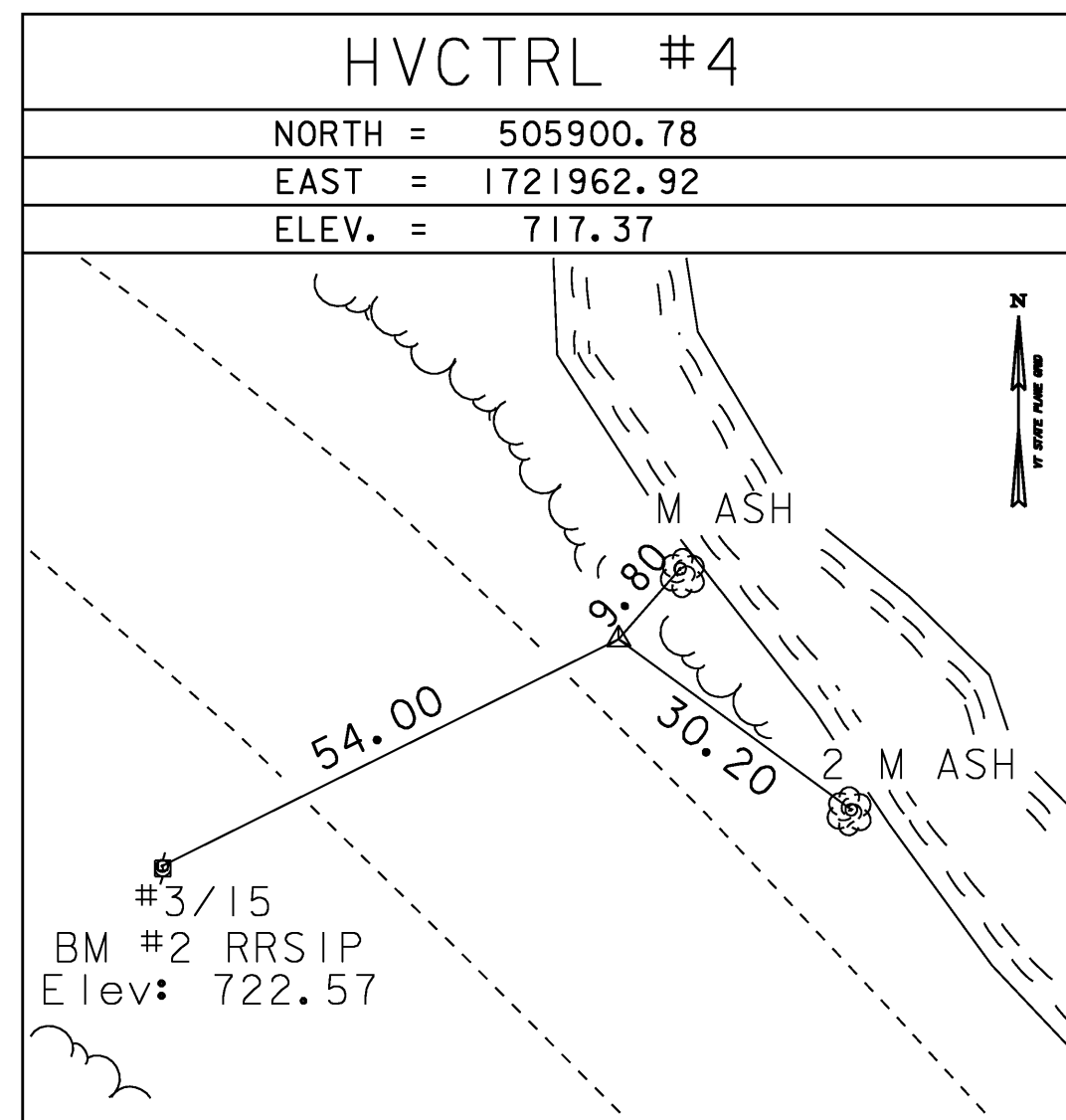
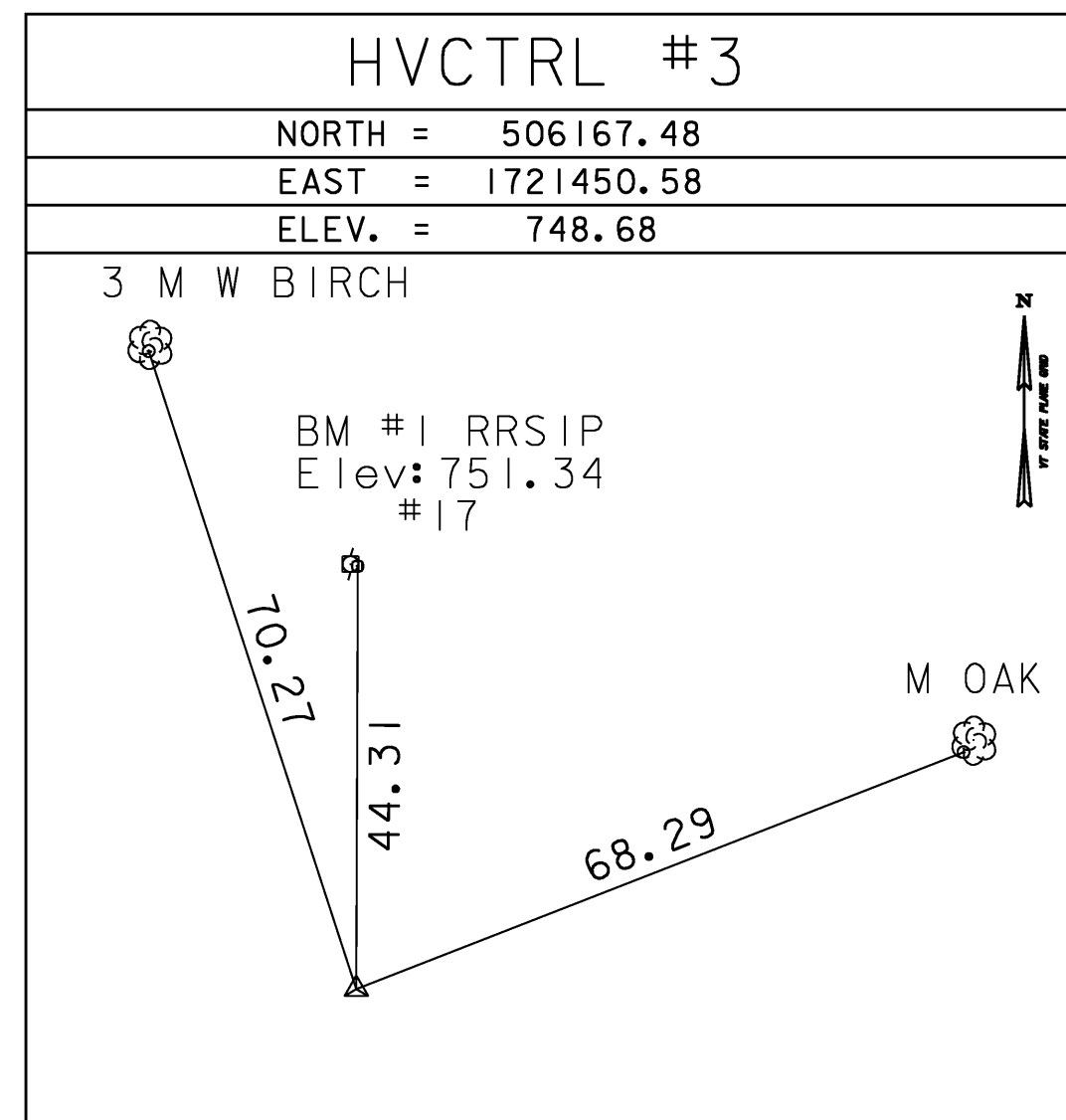
GENERAL LOCATION, FAIRLEE, VT.

TO REACH FROM THE I-91 BRIDGES OVER VT ROUTE 244 GO NORTHWEST ALONG VT ROUTE 244 FOR 0.9 MI (1.4 KM) TO THE INTERSECTION OF HEBBARD ROAD LEFT AND BRAGG HILL ROAD RIGHT AND THE SITE OF THE MARK ON THE LEFT IN THE WEST QUADRANT OF THE INTERSECTION.

THE MARK IS SET 7 CM (3 INCHES) BELOW GROUND SURFACE IN THE TOP OF A FENO STYLE MONUMENT.

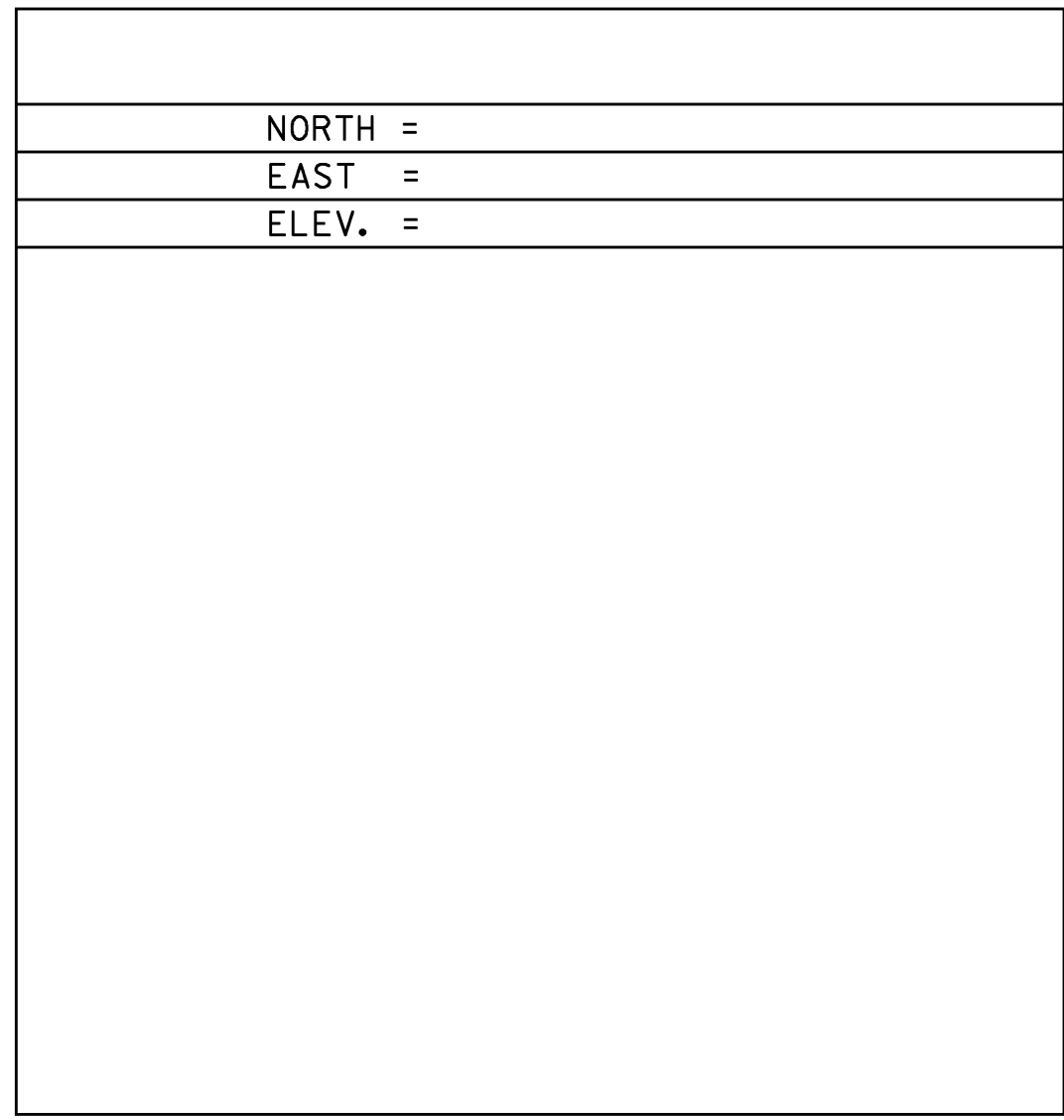
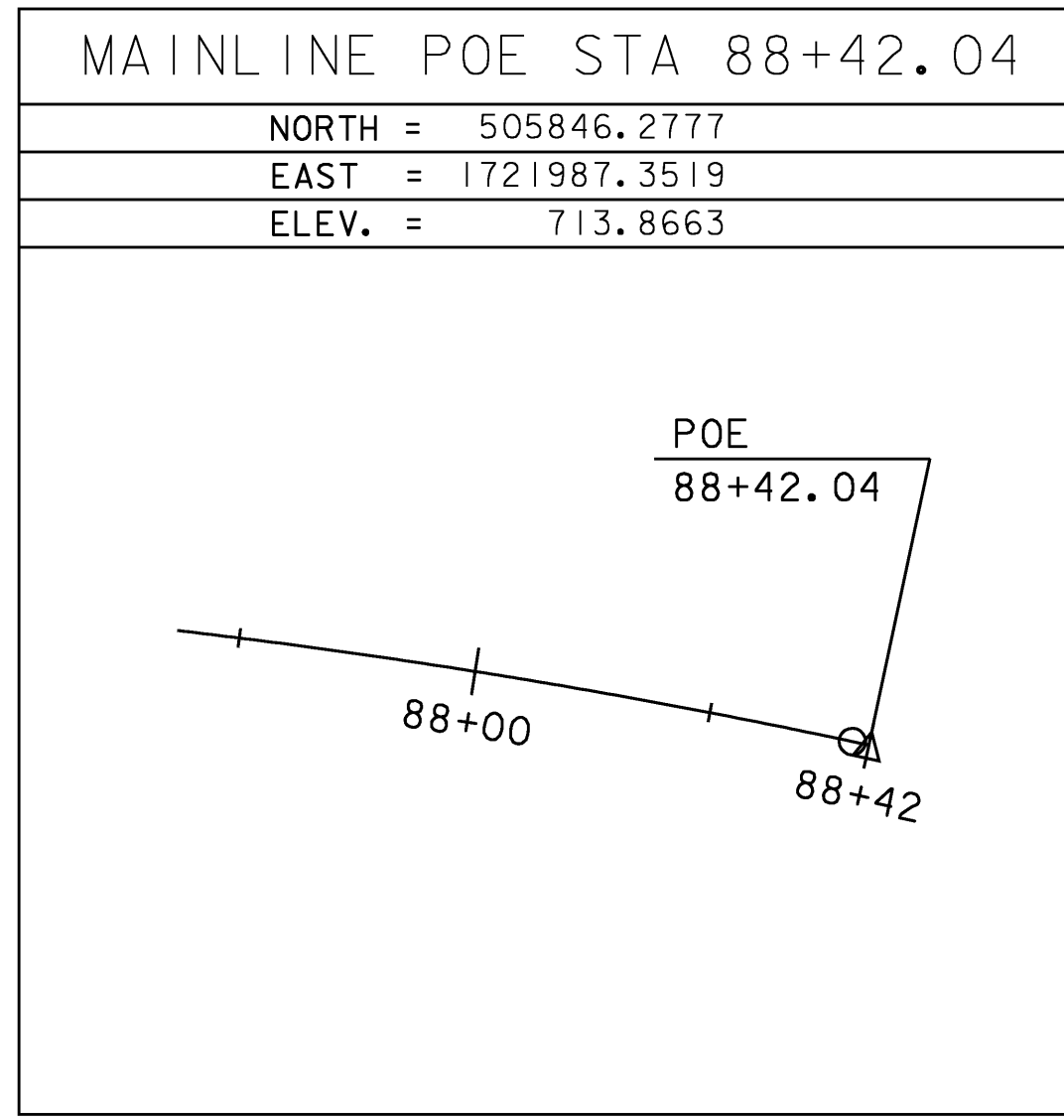
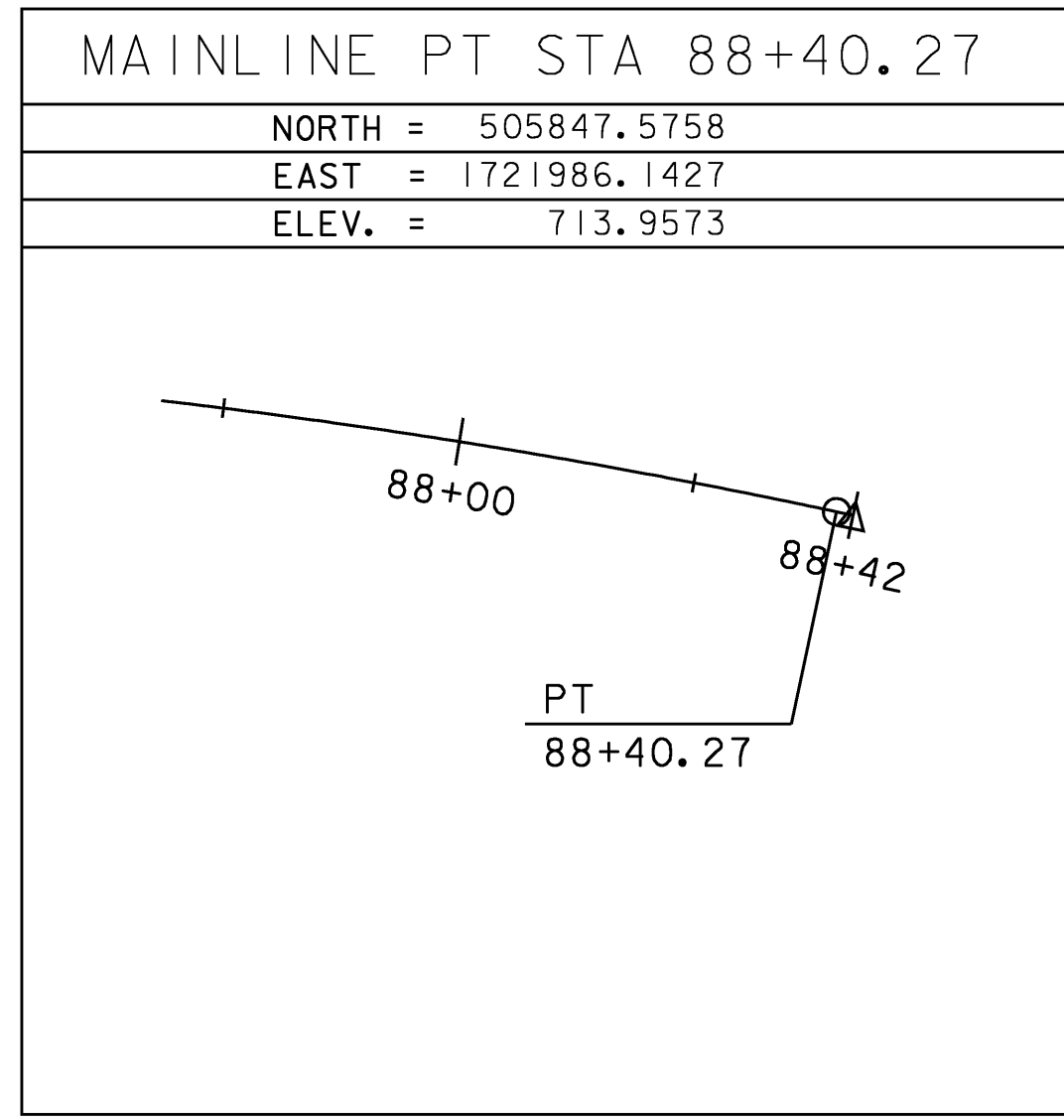
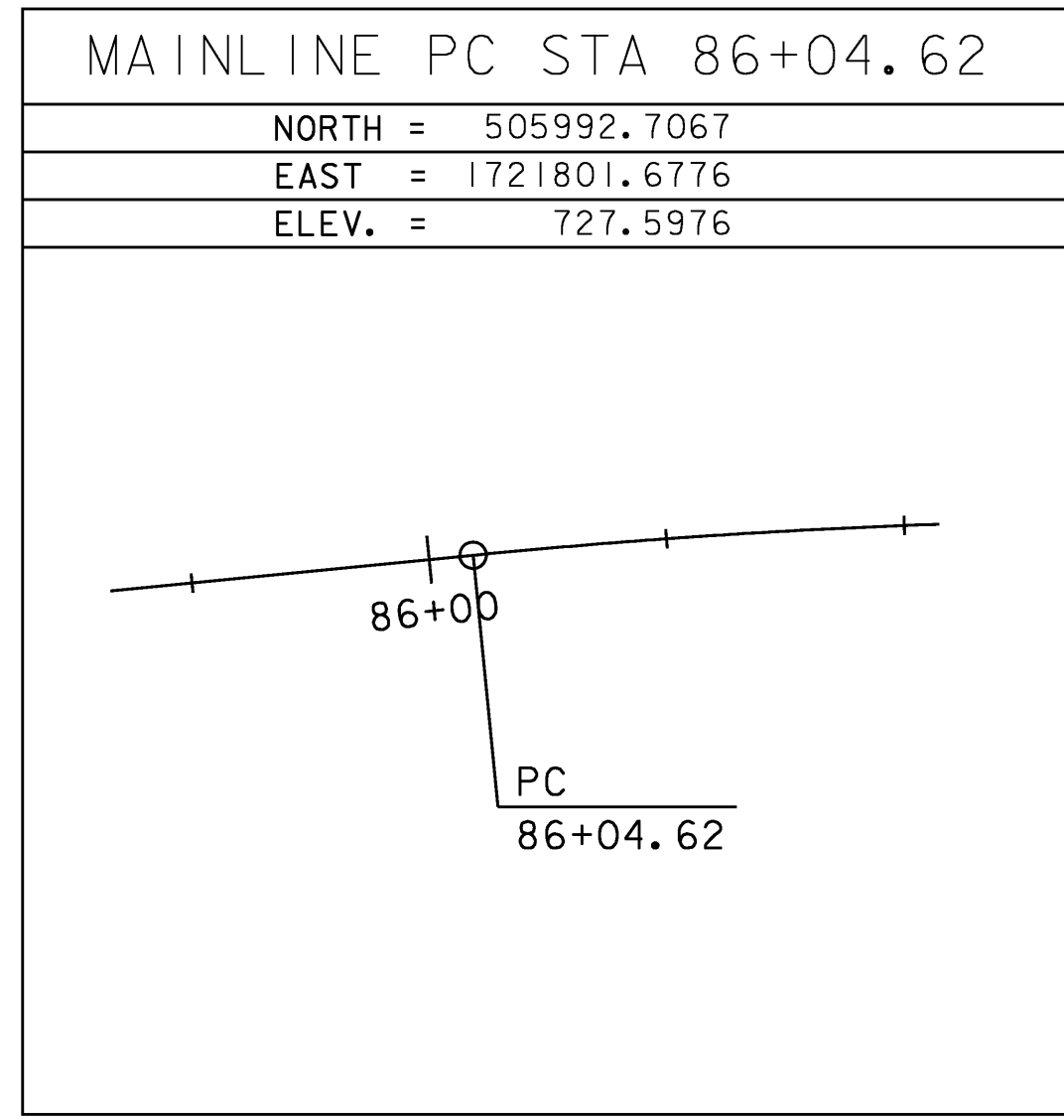
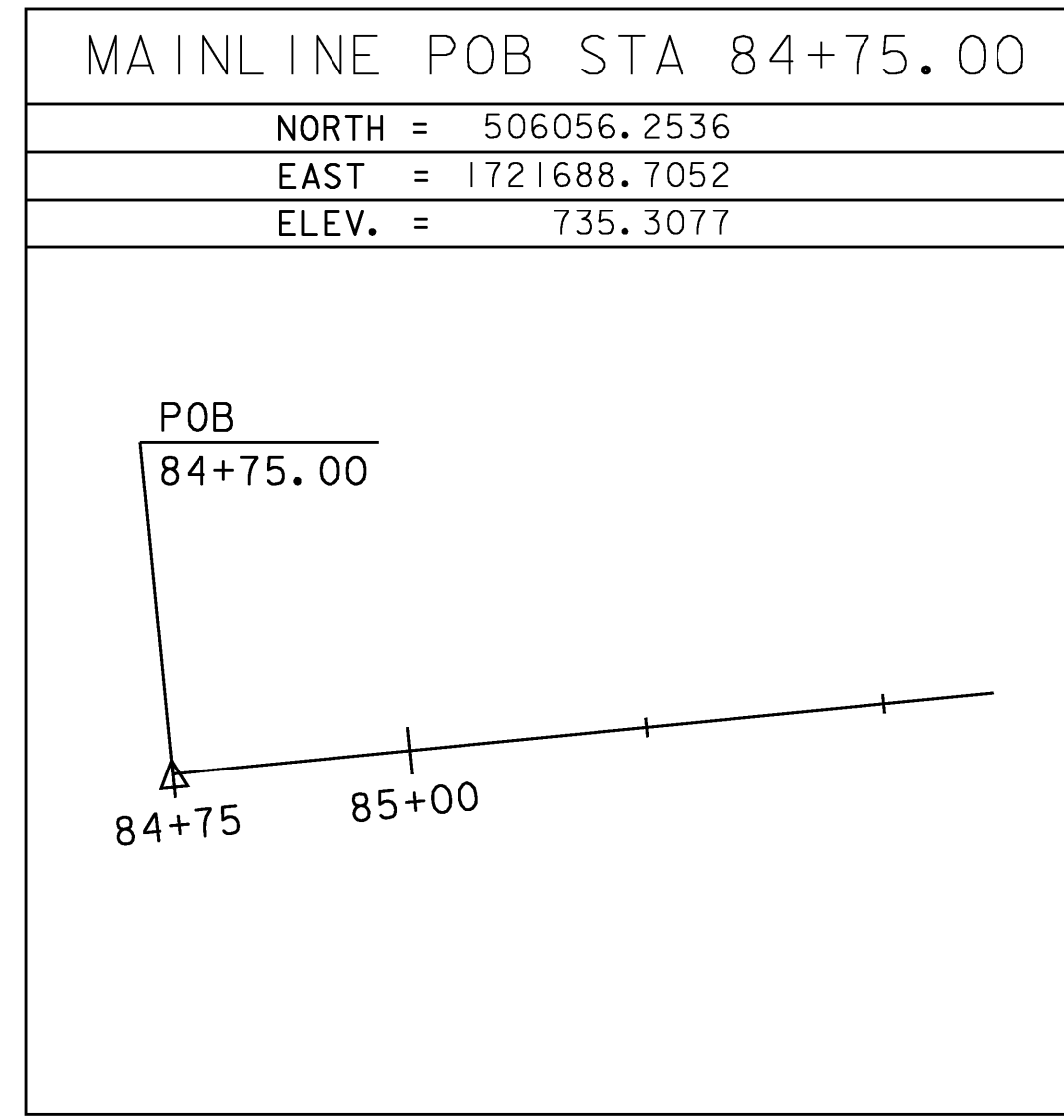
IT IS 7.6 M (24.9 FT) SOUTHWEST OF AND 0.1 M (0.3 FT) LOWER THAN THE CENTERLINE OF VT ROUTE 244, 14.9 M (48.9 FT) NORTH NORTHWEST OF THE CENTERLINE OF HEBBARD ROAD, 29.1 M (95.5 FT) SOUTH OF POLE NO 32/3/19, 25.6 M (84.0 FT) WEST OF POLE NO 31 1/2 /18X, AND 0.3 M (1.0 FT) NORTHEAST OF A FIBERGLASS WITNESS POST.

TRAVERSE TIES



\* Main Traverse Completed 6/18/08 by R. Gilman P.C. & P. Winters

ALIGNMENT TIES



DATUM	
VERTICAL	NAVD 88
HORIZONTAL	NAD 83 (07)
ADJUSTMENT	COMPASS

PROJECT NAME:	Fairlee
PROJECT NUMBER:	STP CULV (I3)
FILE NAME:	08c060\survey\08c060t1.dg
PROJECT LEADER:	C. P. WILLIAMS
DESIGNED BY:	L. J. STONE
ALIGNMENT & TRAVERSE TIE SHEET	
PLOT DATE:	11-MAR-2009
DRAWN BY:	R. Bullock
CHECKED BY:	E. L. RUSTAY
SHEET 7	OF 26