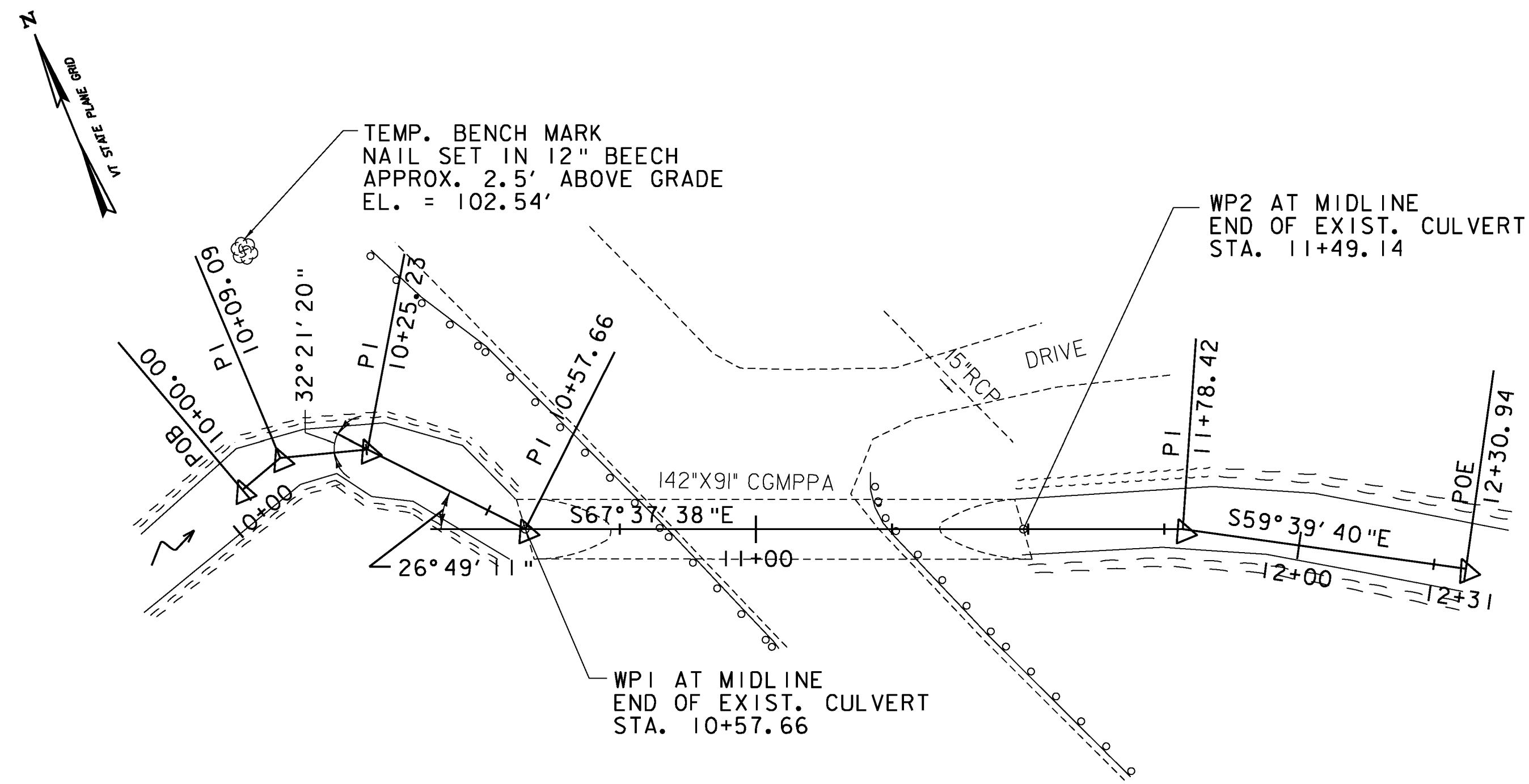
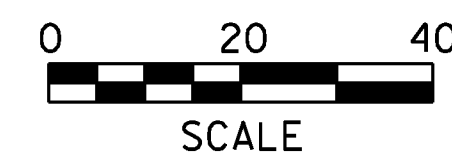


**TRAFFIC CONTROL NOTES (CONTINUED)**

19. A 250 WATT MER/150 WATT HPS LUMINAIRE AND MAST ARM SHALL BE PROVIDED ON A POLE ON EACH APPROACH AT A MOUNTING HEIGHT OF 30 FEET ABOVE ROADWAY CENTERLINE. THE INTENT IS TO LIGHT UP THE AREA AROUND THE SIGNAL HEADS AND STOP BAR FOR INCREASED VISIBILITY. THE ENGINEER SHALL DETERMINE THE ADEQUACY OF THE LIGHTING AND DIRECT CHANGES IF THE LIGHTING IS INSUFFICIENT. LIGHTING SHALL BE PAID INCIDENTAL TO ITEM 678.40, TEMPORARY TRAFFIC SIGNAL SYSTEM.
20. STOP BARS SHALL BE LOCATED A MINIMUM OF 40' AND A MAXIMUM OF 120' FROM THE NEAREST SIGNAL HEAD. PAYMENT WILL BE MADE UNDER ITEM 678.40, TEMPORARY TRAFFIC SIGNAL SYSTEM.
21. SEE STD. E-140 FOR "STOP HERE ON RED" SIGN DETAIL AND E-101 FOR "SIGNAL AHEAD" SYMBOL SIGN. SEE STD. E-121 FOR SIGN PLACEMENT. SEE STD. E-171A AND E-172 FOR ADDITIONAL INFORMATION ON SIGNALS.
22. ALL ELECTRICAL WORK SHALL MEET THE REQUIREMENTS OF THE NATIONAL ELECTRICAL CODE AND STATE INSPECTOR.
23. ALL STOP SIGNS AND ANY TRAFFIC SIGNS MADE IRRELEVANT DUE TO THE TEMPORARY SIGNAL SHALL BE COVERED DURING OPERATION OF THE TEMPORARY SIGNAL OR AT THE DISCRETION OF THE ENGINEER. THE COSTS OF COVERING AND UNCOVERING THESE SIGNS SHALL BE PAID INCIDENTAL TO ITEM 641.10 TRAFFIC CONTROL.
24. CONSTRUCTION APPROACH SIGNS SHALL BE PROVIDED ON EACH APPROACH PER THE "TRAFFIC CONTROL APPROACH SIGN PACKAGE" SHOWN ON SHEET 15. ADDITIONAL CONSTRUCTION APPROACH SIGNS SHALL BE INSTALLED AS REQUIRED BY THE ENGINEER PER STANDARD E-100A, E-101, E-102 AND E-102A. PAYMENT FOR THESE SIGNS, THE REFLECTORIZED PLASTIC DRUMS, ETC., SHALL BE PAID INCIDENTAL TO ITEM 641.10 TRAFFIC CONTROL.
25. THE CONTRACTOR SHALL BE RESPONSIBLE FOR DETERMINING SIGNAL PHASING. THE CONTRACTOR SHALL SUBMIT PHASING DIAGRAM TO THE ENGINEER FOR APPROVAL. THE CONTRACTOR SHALL MAKE SIGNALS OPERATIONAL ONLY AFTER RECEIVING APPROVAL OF THE PHASING DIAGRAM BY THE ENGINEER.



**STREAM ALIGNMENT PLAN**



PROJECT NAME:	WINHALL	PLOT DATE:	1/5/2011
PROJECT NUMBER:	STP CULV(22)	DRAWN BY:	J. SOTER
FILE NAME:	...drawing\z08bl98notes.dgn	CHECKED BY:	M. CHENETTE
PROJECT LEADER:	G. BOGUE	DESIGNED BY:	T. KNIGHT
<b>PROJECT NOTES 2</b>		SHEET 3 OF 21	

