

DURABLE 4 INCH WHITE LINE (SEE OPTION ITEMS)

STA. 14+25 - STA. 20+25 (SOLID LT & RT)  
(WITH EDGELINE BREAKS AT TOWN ROADS)

DURABLE 4 INCH YELLOW LINE (SEE OPTION ITEMS)

STA. 14+25 - STA. 20+25 (SOLID LT & RT)  
(WITH CENTERLINE BREAKS AT TOWN ROADS)

6 INCH UNDERDRAIN PIPE  
14+25 ~ 17+61 LT

TEMPORARY 4 INCH WHITE LINE, PAINT

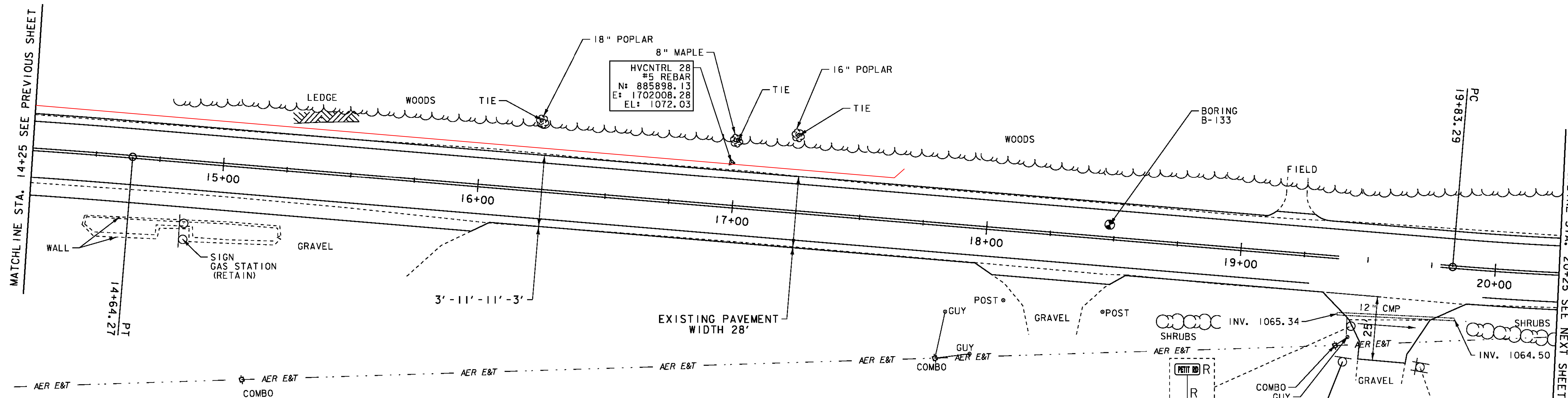
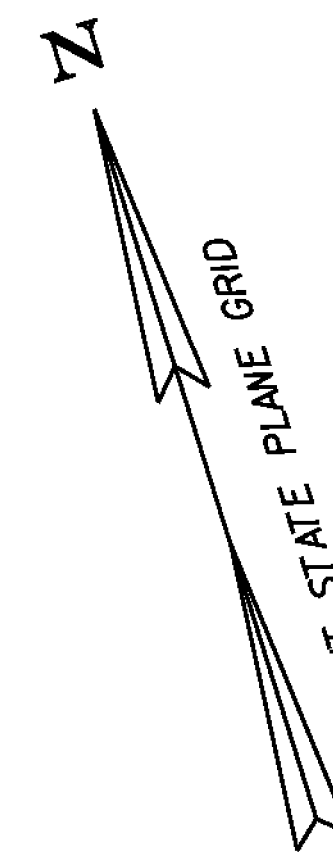
STA. 14+25 - STA. 20+25 (SOLID LT & RT)  
(WITH EDGELINE BREAKS AT TOWN ROADS)

TEMPORARY 4 INCH YELLOW LINE, PAINT

STA. 14+25 - STA. 20+25 (SOLID LT & RT)  
(WITH CENTERLINE BREAKS AT TOWN ROADS)

REMOVING SIGNS

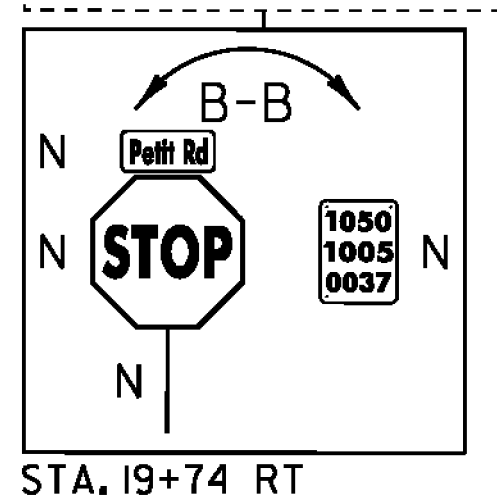
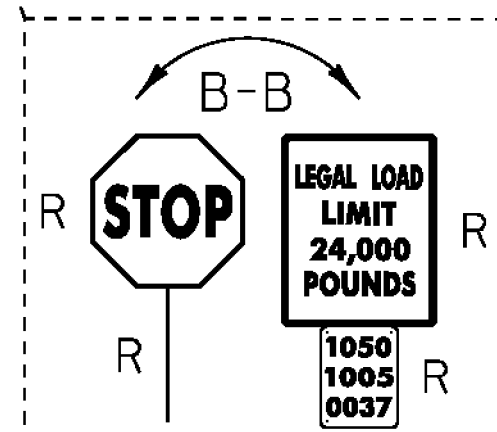
AS SHOWN - 4



HVCNTRL 28  
#5 REBAR  
N: 885898.13  
E: 1702008.28  
EL: 1072.03

LEGAL LOAD LIMIT  
24,000  
POUNDS  
N  
N

PETIT RD  
TH #9  
MM 0.37  
STA. 19+58 RT



- LEGEND**
- MAILBOX
  - BORING
  - SIGN
  - HYDRANT
  - MANHOLE
  - WATER SHUT OFF (WSO)
  - GAS PIPELINE MARKER
  - CATCH BASIN / DROP INLET
  - CURB INLET
  - ⊗ TRAFFIC CONTROL BOX
  - ⊕ PARKING METER
  - ⊖ UTILITY POLE

- SIGN LEGEND**
- R = REMOVE
  - R&S = REMOVE AND SALVAGE
  - RET = RETAIN
  - S = SALVAGE
  - N = NEW
  - B-B = BACK TO BACK

DATUM

NAVD 88

NAD 83

SCALE 1" = 20'-0"

20 0 20

**PROJECT LAYOUT SHEET 31**

PROJECT NAME: NEWPORT-COVENTRY-NEWPORT

PROJECT NUMBER: STP 2802(I)

FILE NAME: 08b158.dgn

PROJECT LEADER: CDL

DESIGNED BY: BMB

PLOT FILE: 08b158-58.I

PLOT DATE: 8/3/2011

DRAWN BY: BMB

CHECKED BY: EPD

SHEET 58 OF 134