

DURABLE 4 INCH WHITE LINE (SEE OPTION ITEMS)

STA. 224+75 RT - STA. 1224+00 LT (SOLID) (ROUTE 100)
 STA. 224+75 - STA. 228+75 (SOLID LT)
 STA. 1224+00 - STA. 228+75 (SOLID RT)
 STA. 1224+00 - STA. 225+16 (SOLID RT) (ROUTE 100)
 STA. 225+75 - STA. 227+83 (SOLID LT)
 STA. 227+83 - STA. 228+75 (DOTTED LT)

DURABLE 4 INCH YELLOW LINE (SEE OPTION ITEMS)

STA. 224+75 - STA. 225+23 (CENTERLINE LT)
 STA. 224+75 - STA. 225+23 (CENTERLINE RT)
 STA. 1224+00 - STA. 1225+16 (SOLID LT & RT) (ROUTE 100)
 STA. 225+75 - STA. 228+75 (CENTERLINE RT)
 STA. 225+75 - STA. 228+75 (SOLID LT & RT)

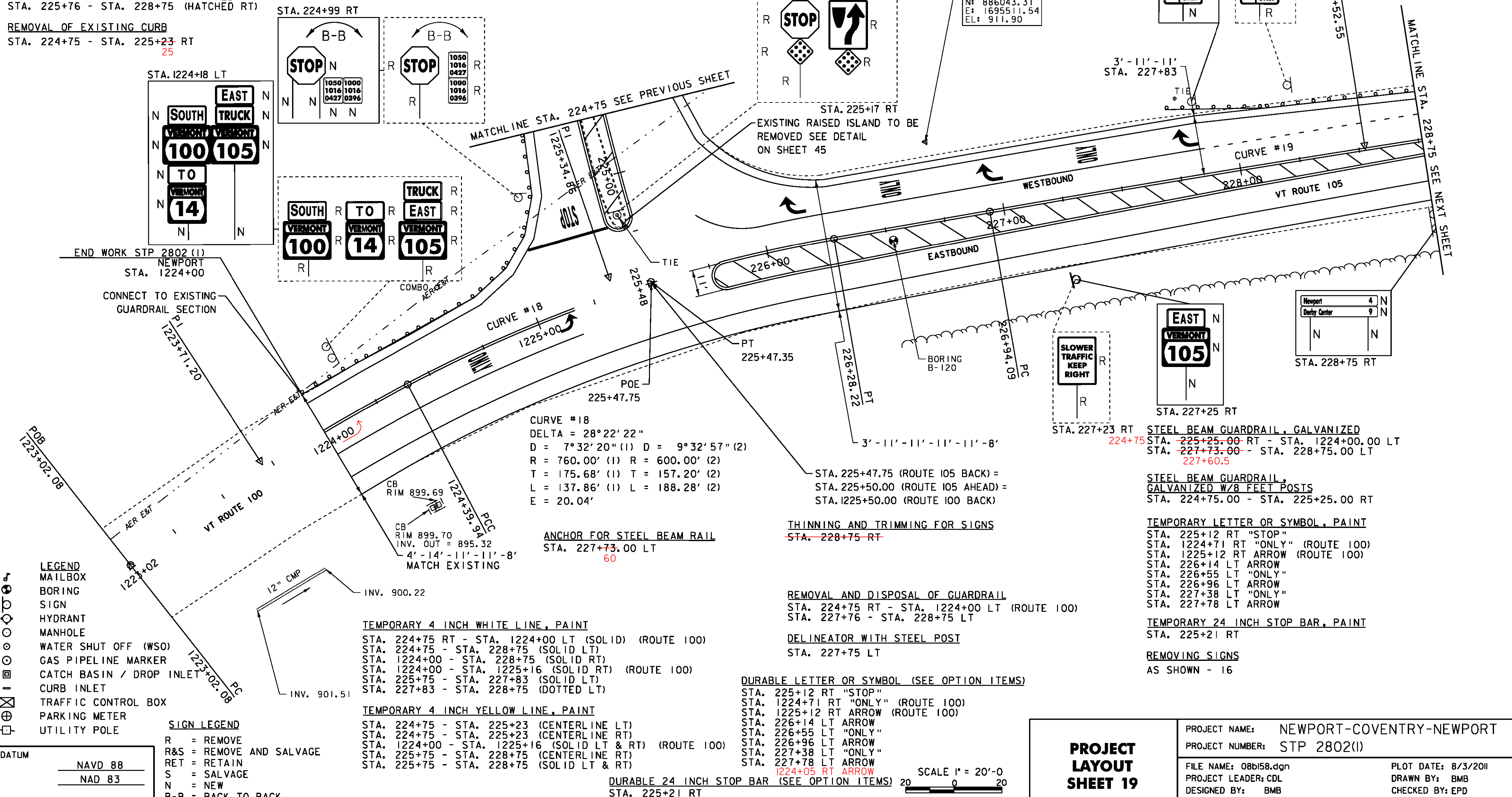
DURABLE 8 INCH YELLOW LINE (SEE OPTION ITEMS)

STA. 224+75 - STA. 225+17 (HATCHED RT)
 STA. 225+76 - STA. 228+75 (HATCHED RT)

REMOVAL OF EXISTING CURB

STA. 224+75 - STA. 225+23 RT

CURVE #19
 DELTA = 1°48'56"
 D = 0°34'23"
 R = 10000.00'
 T = 158.46'
 L = 316.89'
 E = 1.26'
 NORMAL CROWN (50 MPH)



- LEGEND**
- MAILBOX
 - BORING
 - SIGN
 - HYDRANT
 - MANHOLE
 - WATER SHUT OFF (WSO)
 - GAS PIPELINE MARKER
 - CATCH BASIN / DROP INLET
 - CURB INLET
 - ⊠ TRAFFIC CONTROL BOX
 - ⊕ PARKING METER
 - ⊕ UTILITY POLE

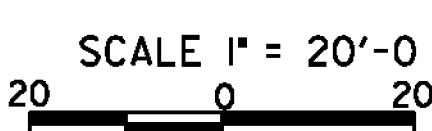
- SIGN LEGEND**
- R = REMOVE
 - R&S = REMOVE AND SALVAGE
 - RET = RETAIN
 - S = SALVAGE
 - N = NEW
 - B-B = BACK TO BACK

- TEMPORARY 4 INCH WHITE LINE, PAINT**
- STA. 224+75 RT - STA. 1224+00 LT (SOLID) (ROUTE 100)
 - STA. 224+75 - STA. 228+75 (SOLID LT)
 - STA. 1224+00 - STA. 228+75 (SOLID RT)
 - STA. 1224+00 - STA. 1225+16 (SOLID RT) (ROUTE 100)
 - STA. 225+75 - STA. 227+83 (SOLID LT)
 - STA. 227+83 - STA. 228+75 (DOTTED LT)
- TEMPORARY 4 INCH YELLOW LINE, PAINT**
- STA. 224+75 - STA. 225+23 (CENTERLINE LT)
 - STA. 224+75 - STA. 225+23 (CENTERLINE RT)
 - STA. 1224+00 - STA. 1225+16 (SOLID LT & RT) (ROUTE 100)
 - STA. 225+75 - STA. 228+75 (CENTERLINE RT)
 - STA. 225+75 - STA. 228+75 (SOLID LT & RT)

- DURABLE LETTER OR SYMBOL (SEE OPTION ITEMS)**
- STA. 225+12 RT "STOP"
 - STA. 1224+71 RT "ONLY" (ROUTE 100)
 - STA. 1225+12 RT ARROW (ROUTE 100)
 - STA. 226+14 LT ARROW
 - STA. 226+55 LT "ONLY"
 - STA. 226+96 LT ARROW
 - STA. 227+38 LT "ONLY"
 - STA. 227+78 LT ARROW
 - 1224+05 RT ARROW

DATUM
 NAVD 88
 NAD 83

DURABLE 24 INCH STOP BAR (SEE OPTION ITEMS) 20
 STA. 225+21 RT



PROJECT LAYOUT SHEET 19	PROJECT NAME: NEWPORT-COVENTRY-NEWPORT	PLOT DATE: 8/3/2011
	PROJECT NUMBER: STP 2802(I)	DRAWN BY: BMB
	FILE NAME: 08b158.dgn	CHECKED BY: EPD
	PROJECT LEADER: CDL	SHEET 46 OF 134
	DESIGNED BY: BMB	
	PLOT FILE: 08b158-46.1	