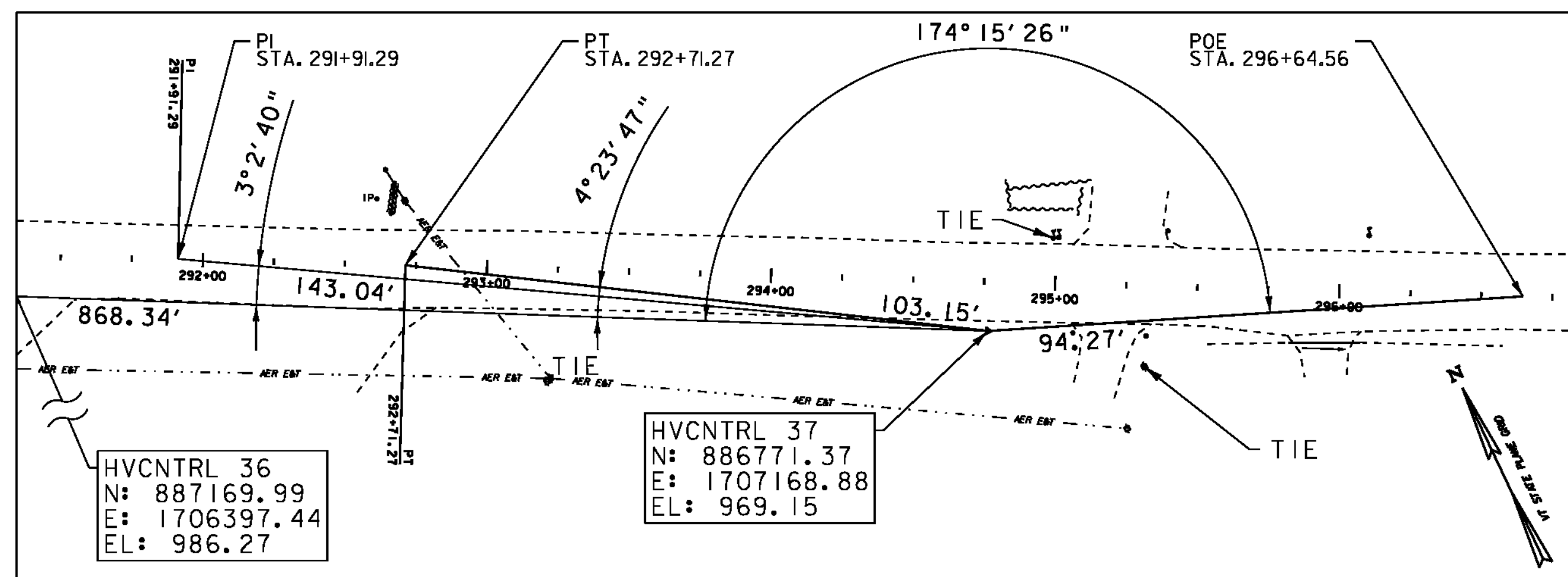
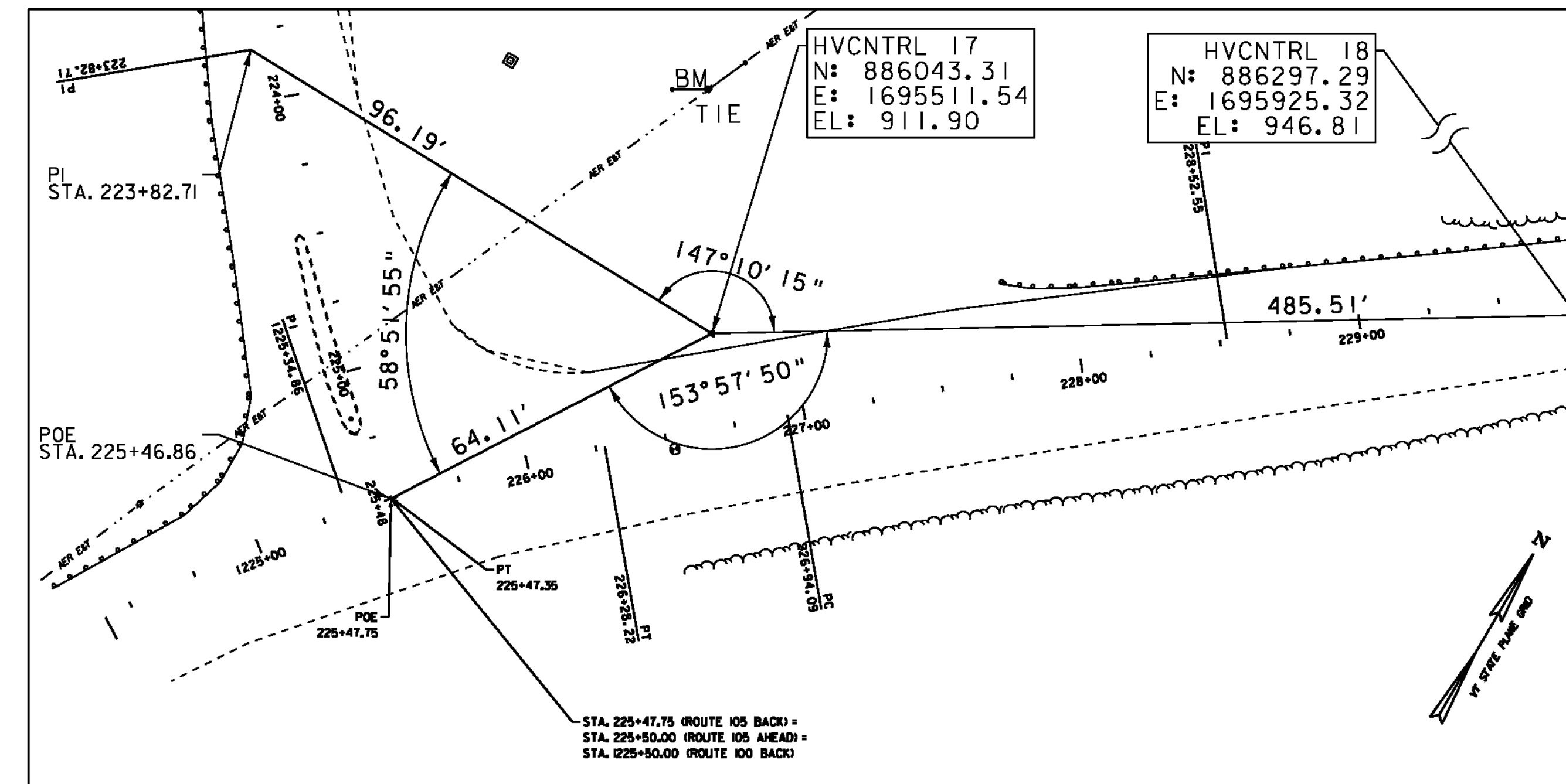
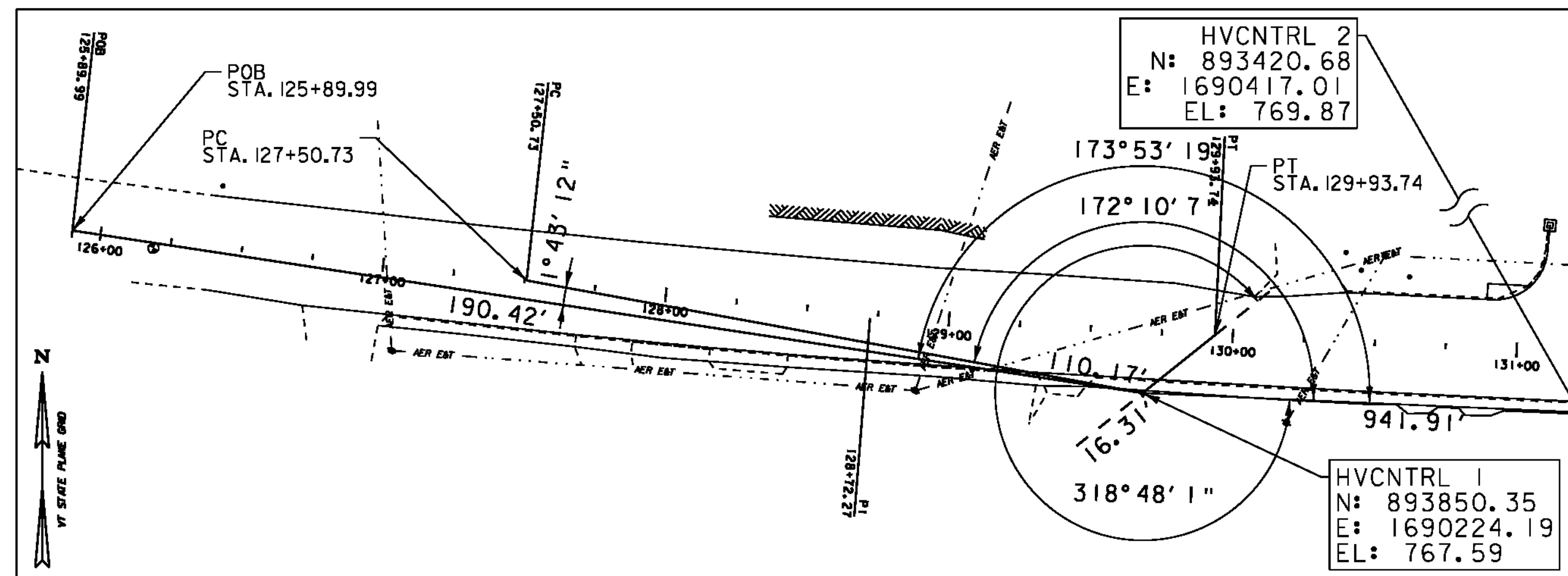


PI COORDINATES

PI	STATION	NORTHING	EASTING	PI	STATION	NORTHING	EASTING	PI	STATION	NORTHING	EASTING	PI	STATION	NORTHING	EASTING
1	STA. 128+72.27	893947.88	1690204.61	11	STA. 186+40.76	889317.71	1693518.47	21	STA. 232+94.74	886408.72	1696017.03	31	STA. 22+04.82	885691.37	1702471.06
2	STA. 135+34.11	893342.70	1690472.73	12	STA. 191+28.61	888889.07	1693751.41	22	STA. 238+01.55	886496.12	1696523.26	32	STA. 26+59.90	885685.29	1702931.24
3	STA. 142+91.77	892852.06	1691056.90	13	STA. 196+91.43	888407.67	1694043.16	23	STA. 244+85.82	886404.69	1697204.68	33	STA. 31+60.07	885693.24	1703431.35
4	STA. 145+87.16	892666.66	1691286.86	14	STA. 199+99.78	888147.70	1694209.00	24	STA. 251+79.43	886231.62	1697877.21	34	STA. 39+45.75	886387.08	1703906.16
5	STA. 152+39.79	892245.74	1691785.62	15	STA. 204+01.07	887803.11	1694414.69	25	STA. 261+06.42	886312.58	1698805.27	35	STA. 44+05.28	886804.12	1704100.90
6	STA. 161+91.89	891445.09	1692305.56	16	STA. 211+39.12	887106.10	1694661.63	26	STA. 268+40.95	886383.73	1699536.34	36	STA. 49+91.70	887270.24	1704458.73
7	STA. 167+54.38	890956.68	1692584.93	17	STA. 223+82.71	886047.63	1695319.21	27	STA. 275+54.56	886301.76	1700247.23	37	STA. 55+37.00	887254.08	1705063.23
8	STA. 174+71.59	890337.11	1692946.21	18	STA. 1223+71.20	885788.64	1695340.10	28	STA. 0+96.96	886270.57	1700453.31	38	STA. 281+12.18	887228.30	1705901.73
9	STA. 180+33.95	889847.29	1693222.49	19	STA. 1225+34.86	885928.03	1695426.59	29	STA. 2+96.66	886234.63	1700649.76	39	STA. 285+47.78	887203.05	1706336.61
10	STA. 183+66.23	889560.68	1693390.60	20	STA. 228+52.55	886134.11	1695670.41	30	STA. 12+41.80	886054.40	1701577.56	40	STA. 291+91.29	886916.00	1706922.07

ALIGNMENT TIES



DATUM
 VERTICAL NAVD 88
 HORIZONTAL NAD 83
 ADJUSTMENT

SCALE 1" = 40'-0"
 40 0 40

TIE SHEET 4

PROJECT NAME: NEWPORT-COVENTRY-NEWPORT
 PROJECT NUMBER: STP 2802(I)
 FILE NAME: 08b158.dgn
 PROJECT LEADER: CDL
 DESIGNED BY: BMB
 PLOT FILE: 08b158-21.i
 PLOT DATE: 8/3/2011
 DRAWN BY: BMB
 CHECKED BY: EPD
 SHEET 21 OF 134