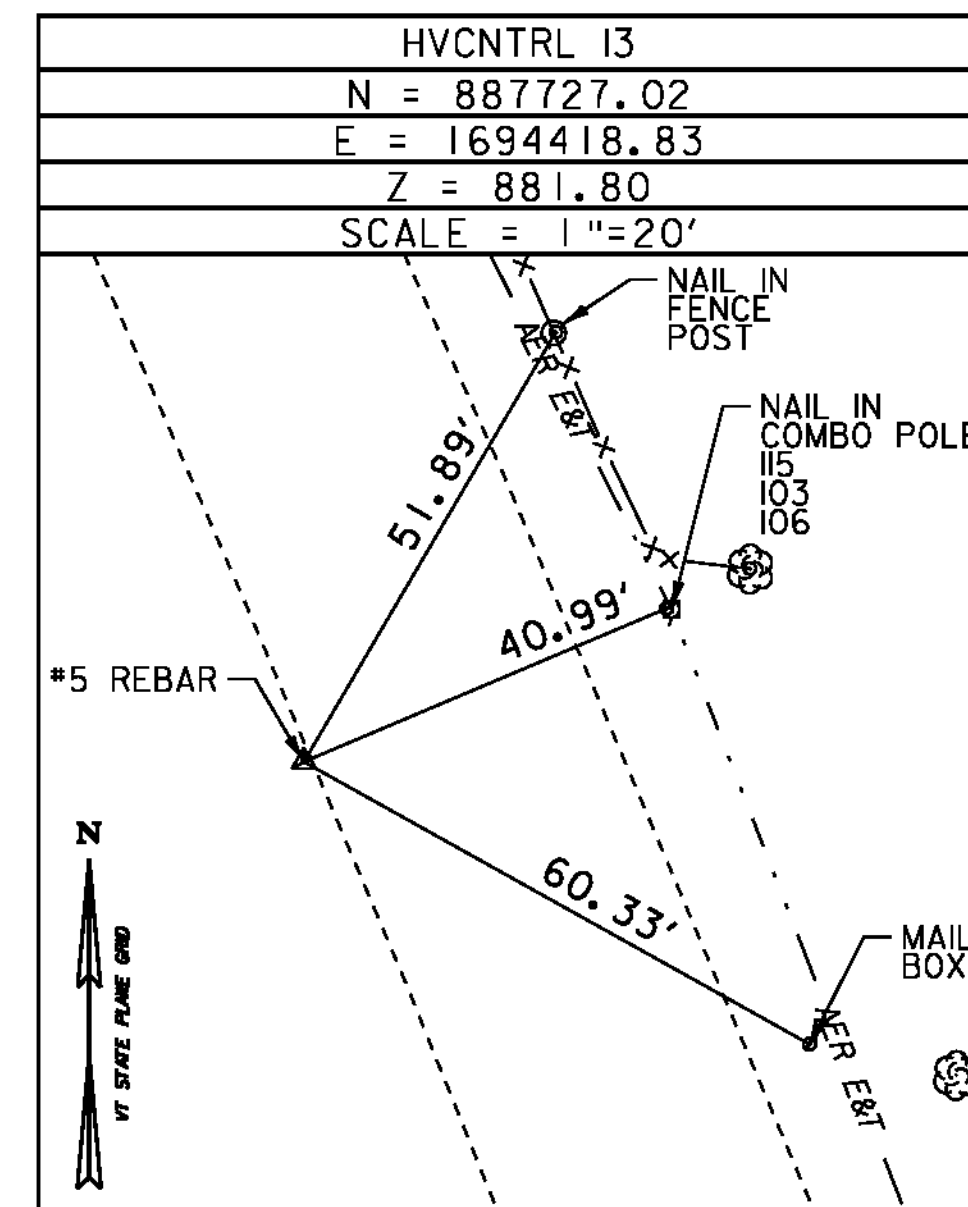
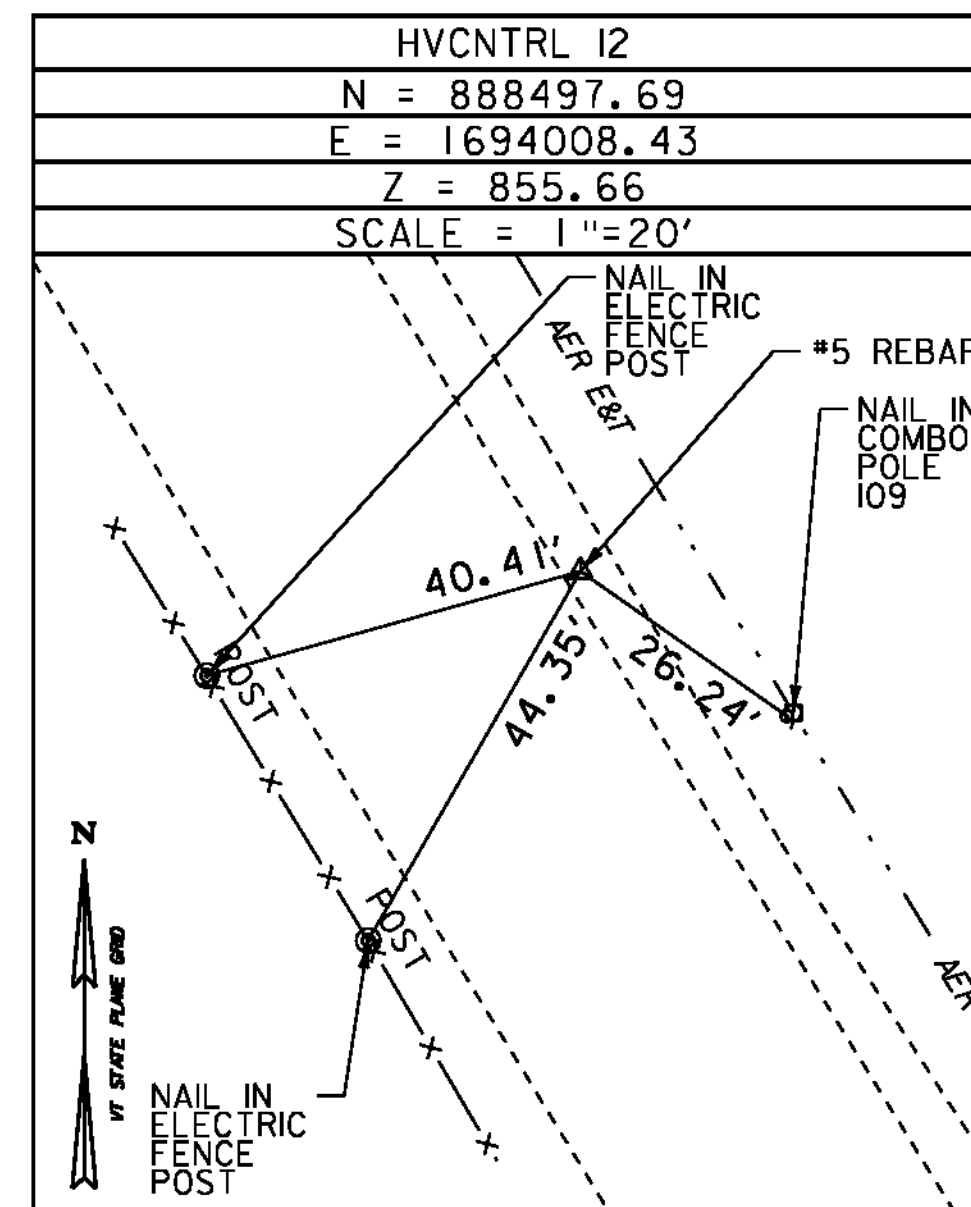
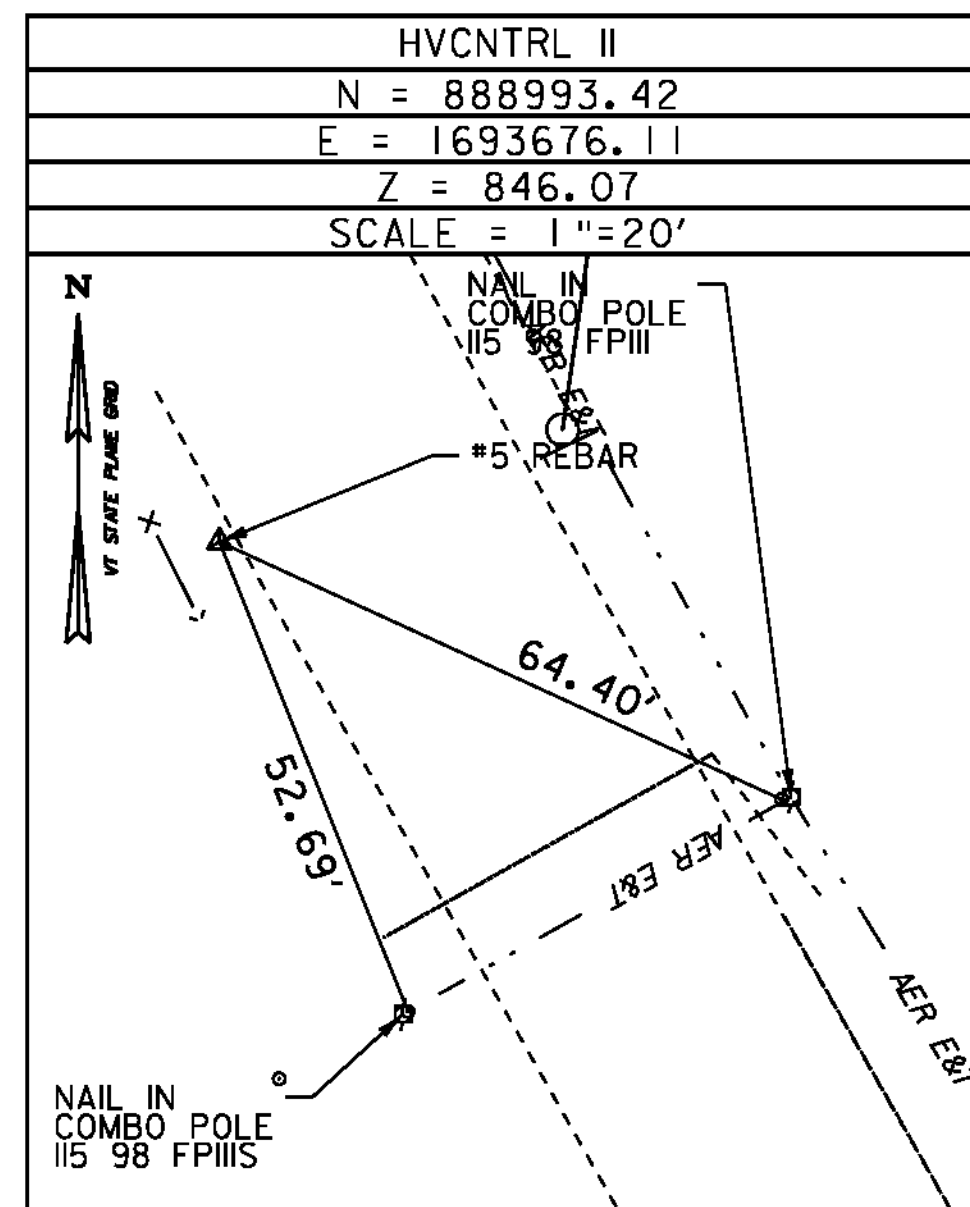
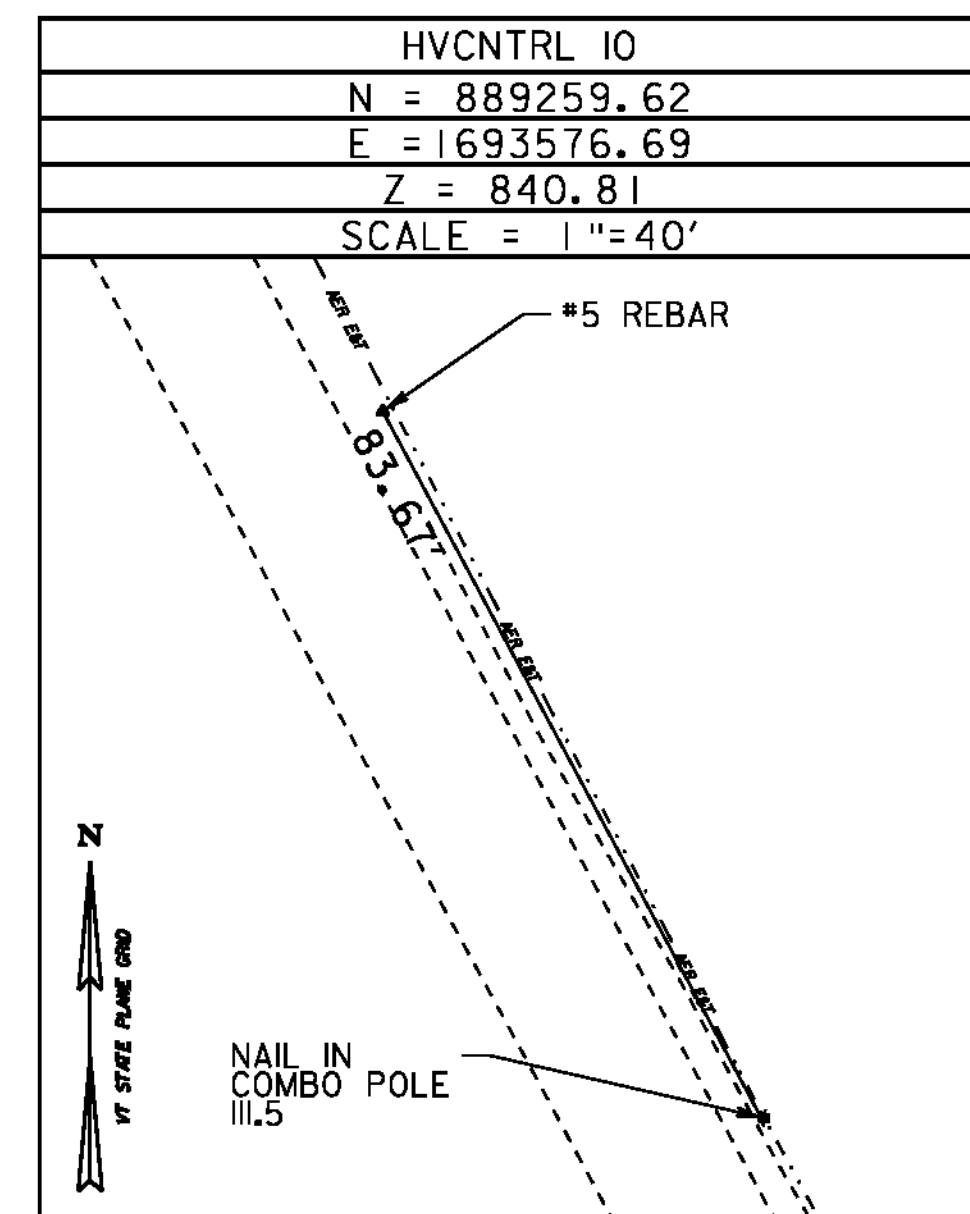
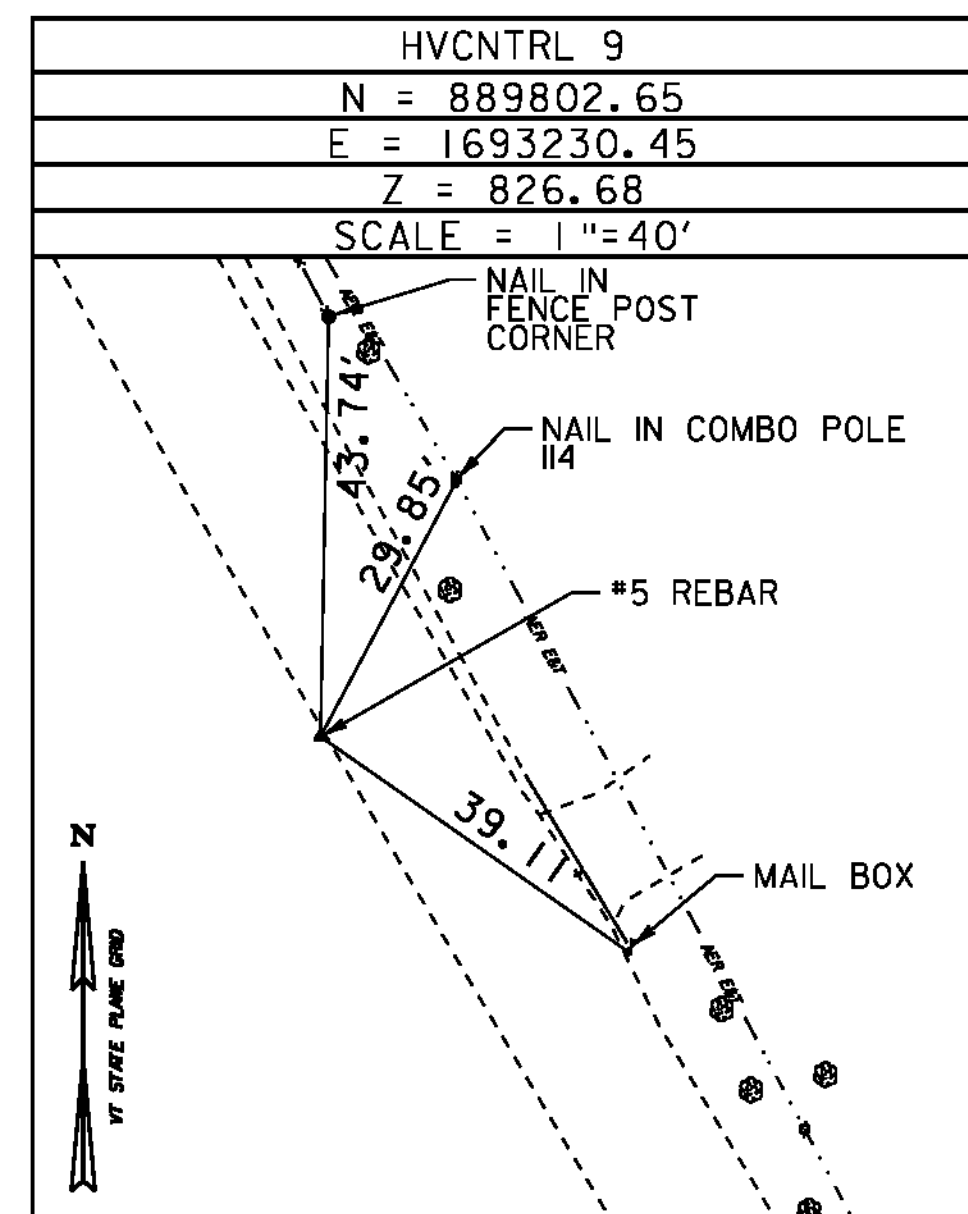
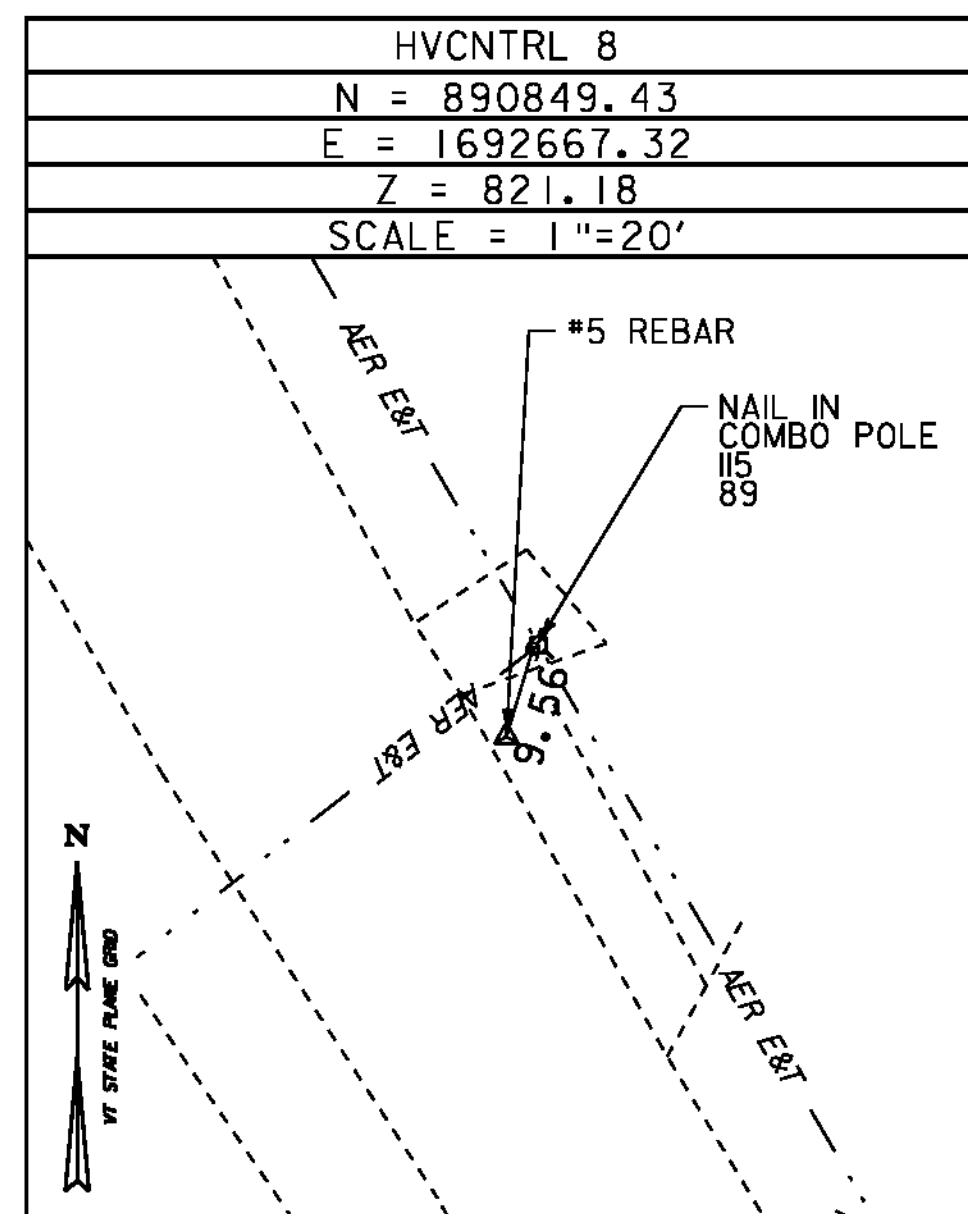
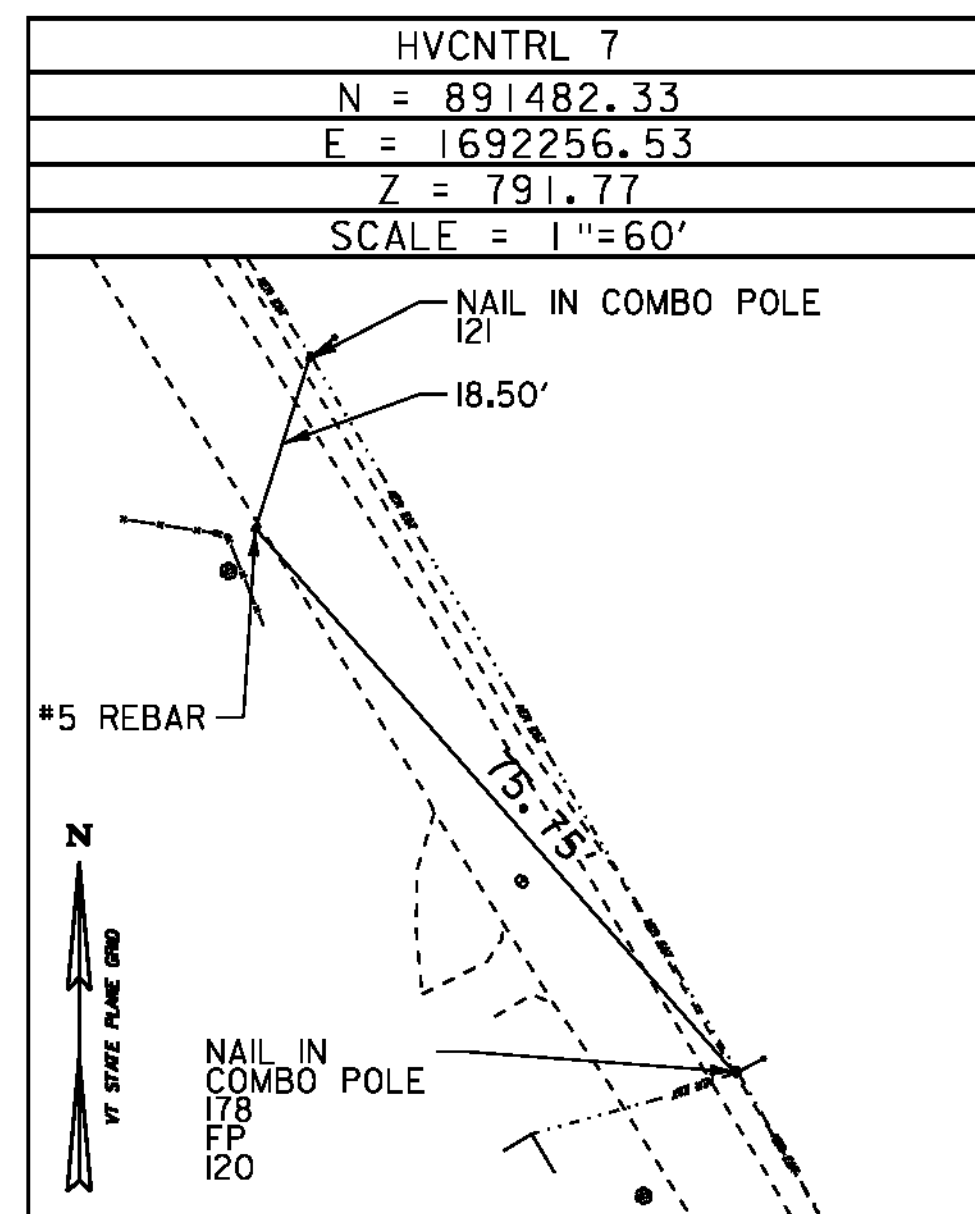
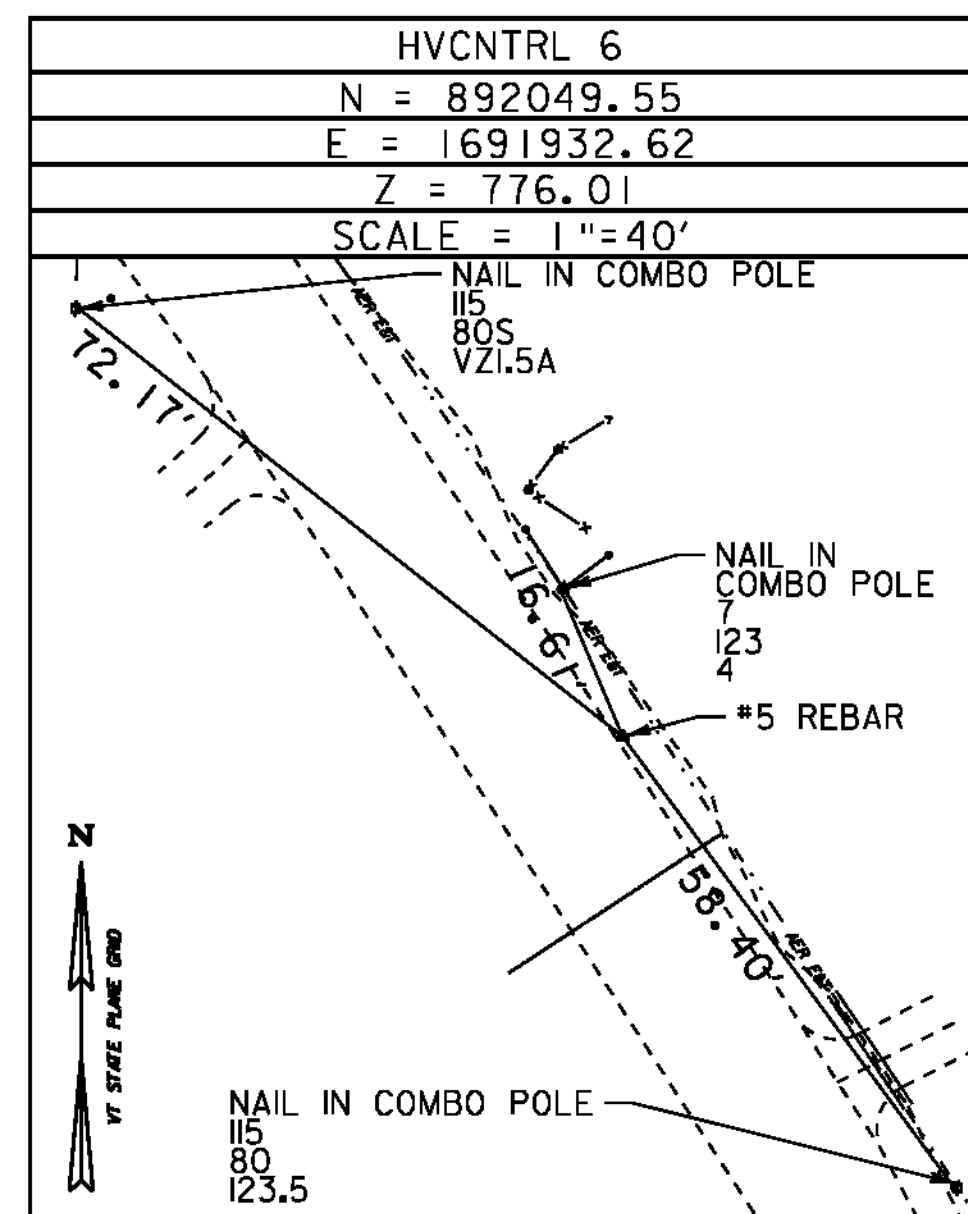
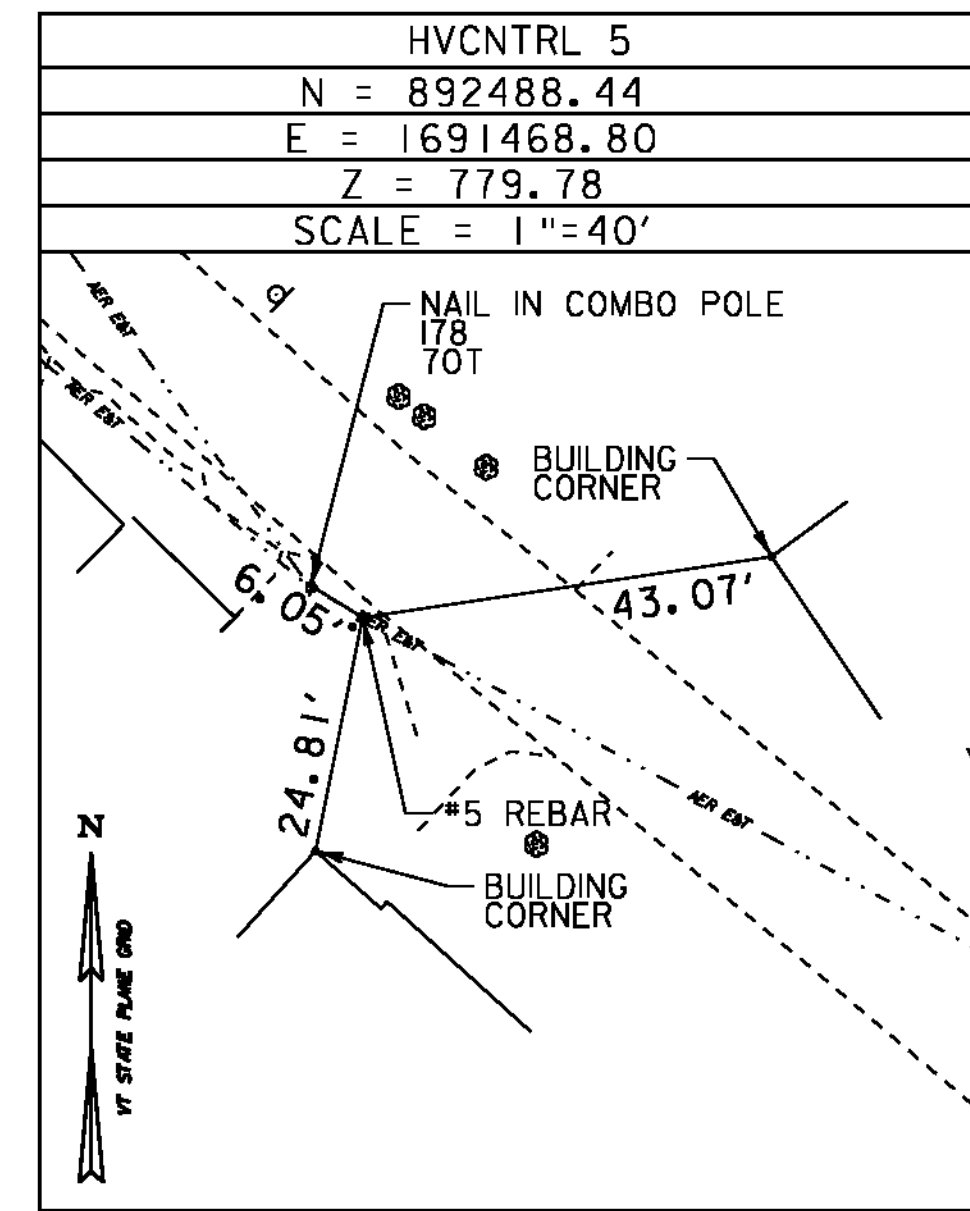
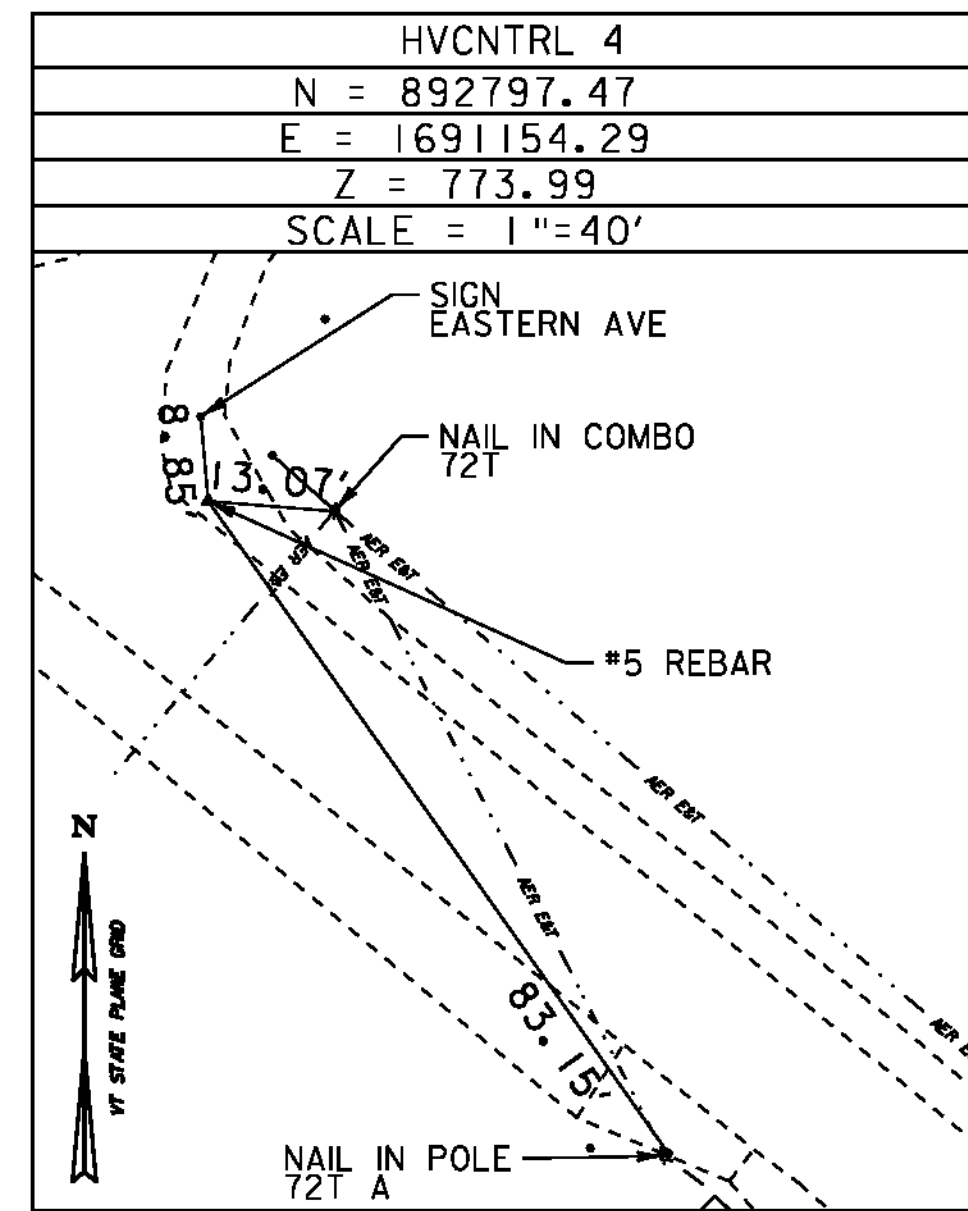
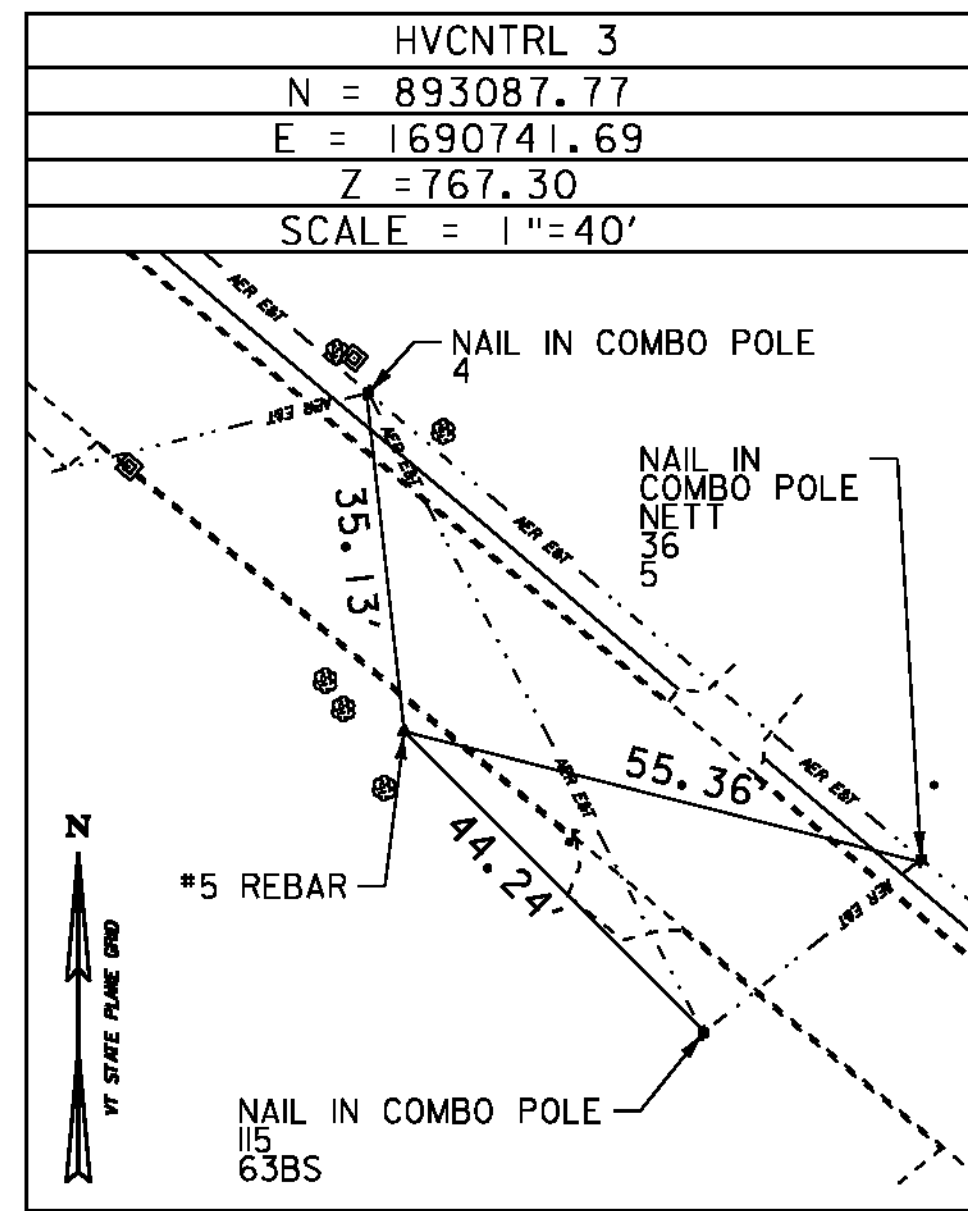
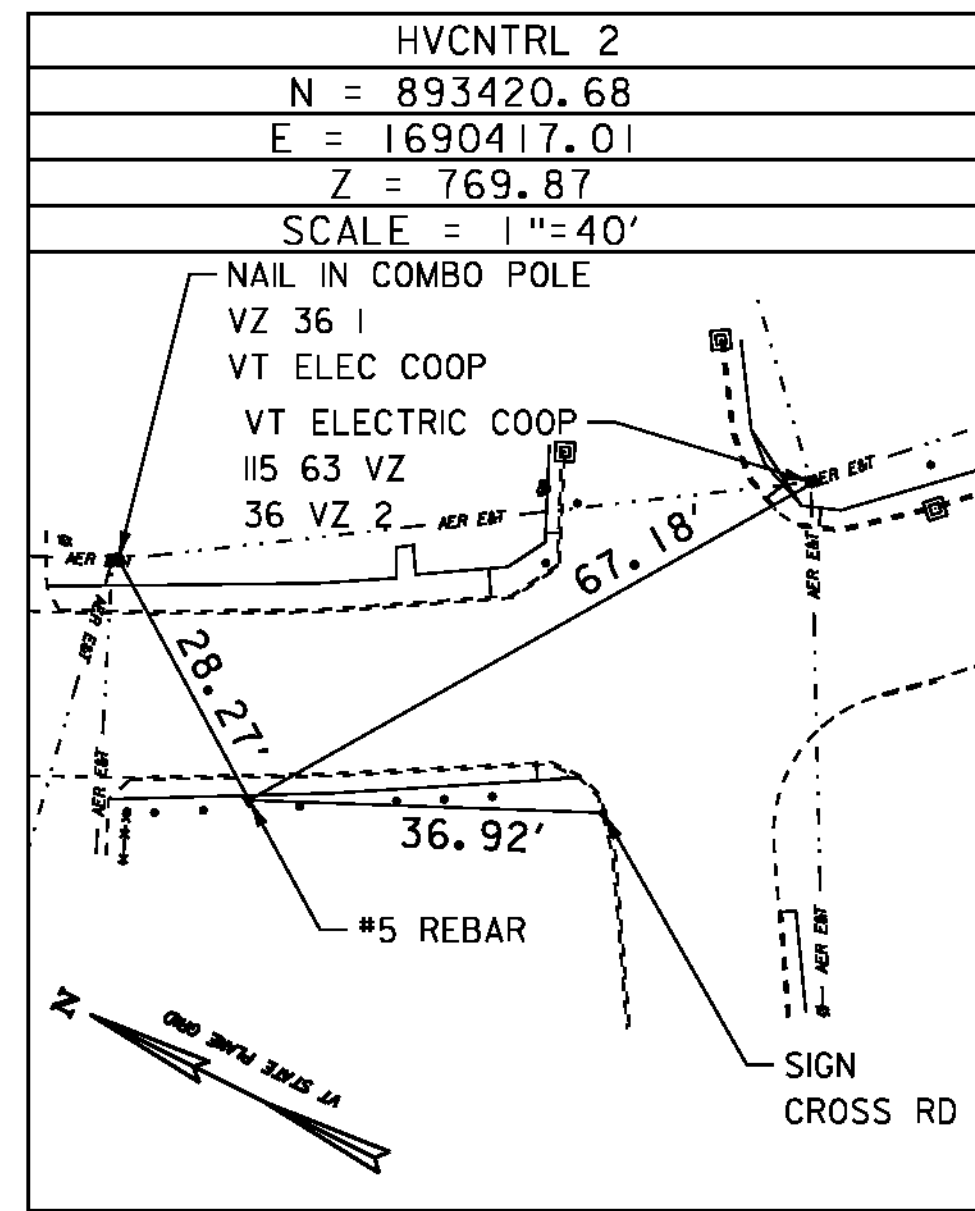
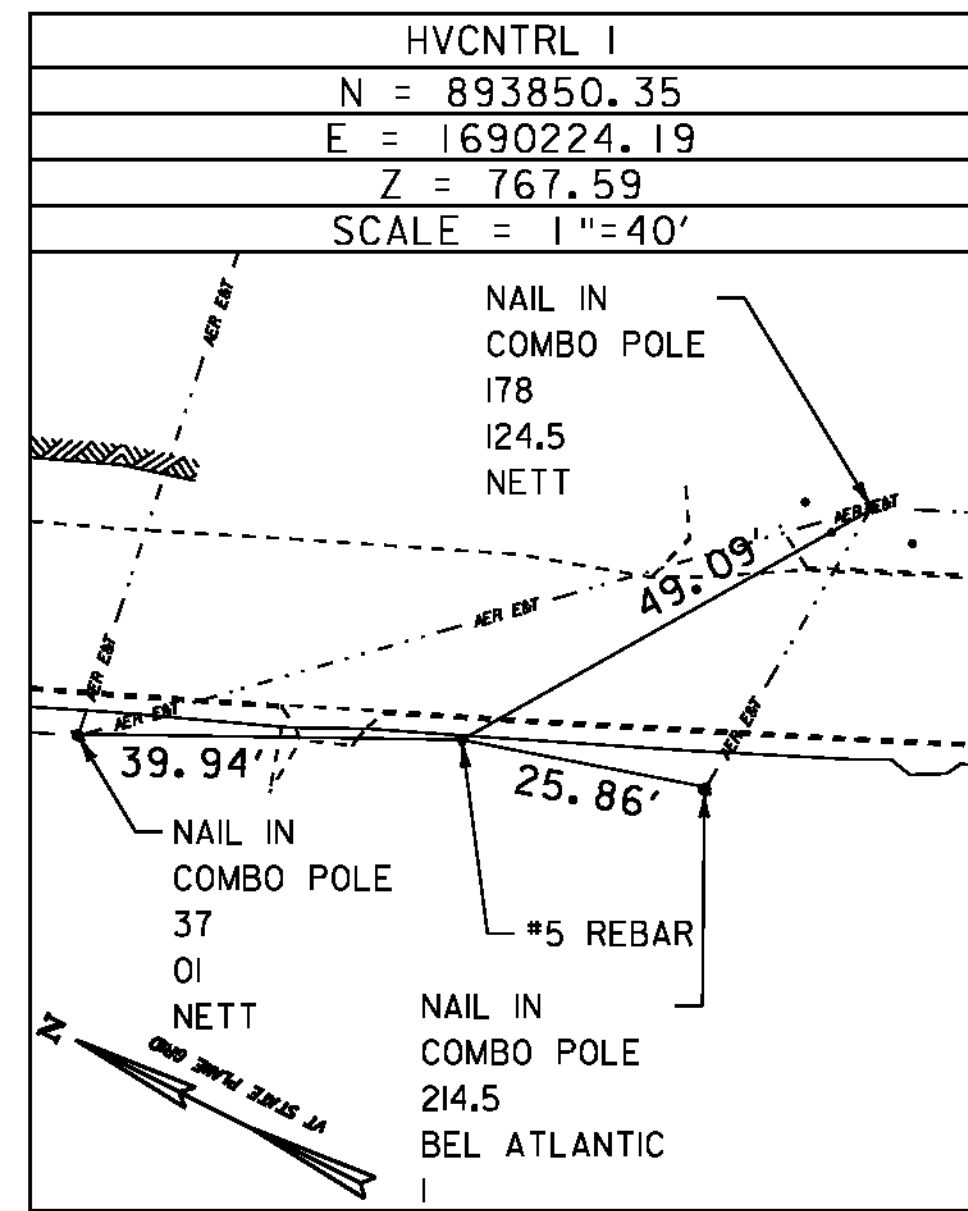


CONTROL TIES



HVCNTRL #1

TO REACH FROM THE INTERSECTION OF VANCE HILL RD (TOWN HIGHWAY #3), CROSS ST (TOWN HIGHWAY #1) AND VERMONT ROUTE 105 HEAD WEST ALONG VERMONT ROUTE 105 A DISTANCE OF APPROXIMATELY 0.106 MI (562 FT). TURN LEFT AND GO TO THE BITUMINOUS SIDEWALK. THE POINT IS LOCATED APPROXIMATELY 0.92 FT (11 INCHES) TO THE OUTSIDE OF THE BITUMINOUS SIDEWALK. IT IS SOUTH OF A GRAVEL DRIVE AND A SINGLE POST FOUR WAY INTERSECTION WARNING SIGN AND NORTH OF A BELL ATLANTIC COMBO POLE # 214.5. THE MARK IS SET FLUSH WITH THE GROUND SURFACE ON TOP OF A # 5 REBAR.

HVCNTRL #2

TO REACH FROM THE INTERSECTION OF VANCE HILL RD (TOWN HIGHWAY #3), CROSS ST (TOWN HIGHWAY #1) AND VERMONT ROUTE 105 HEAD WEST ALONG VERMONT ROUTE 105 A DISTANCE OF APPROXIMATELY 0.018 MI (93 FT). TURN LEFT AND GO TO THE BITUMINOUS SIDEWALK. THE POINT IS LOCATED IN BETWEEN THE BITUMINOUS SIDEWALK AND A ROW OF WOODEN FENCE POSTS APPROXIMATELY 1 FT (12 INCHES) TO THE OUTSIDE OF THE BITUMINOUS SIDEWALK. THE POINT IS NORTH OF THE CROSS RD STREET SIGN AND SOUTH OF A PAVED DRIVE AND GAS STATION PUMPS. THE MARK IS SET FLUSH WITH THE GROUND SURFACE ON A # 5 REBAR.

DATUM	
VERTICAL	NAVD 88
HORIZONTAL	NAD 83
ADJUSTMENT	

TIE SHEET 1		PROJECT NAME:	NEWPORT-COVENTRY-NEWPORT
		PROJECT NUMBER:	STP 2802(I)
FILE NAME:	08b158.dgn	PLOT DATE:	8/3/2011
PROJECT LEADER:	CDL	DRAWN BY:	BMB
DESIGNED BY:	BMB	CHECKED BY:	EPD
PLOT FILE:	08b158-18.1	SHEET	18 OF 134