

WIRED CONDUIT SCHEDULE

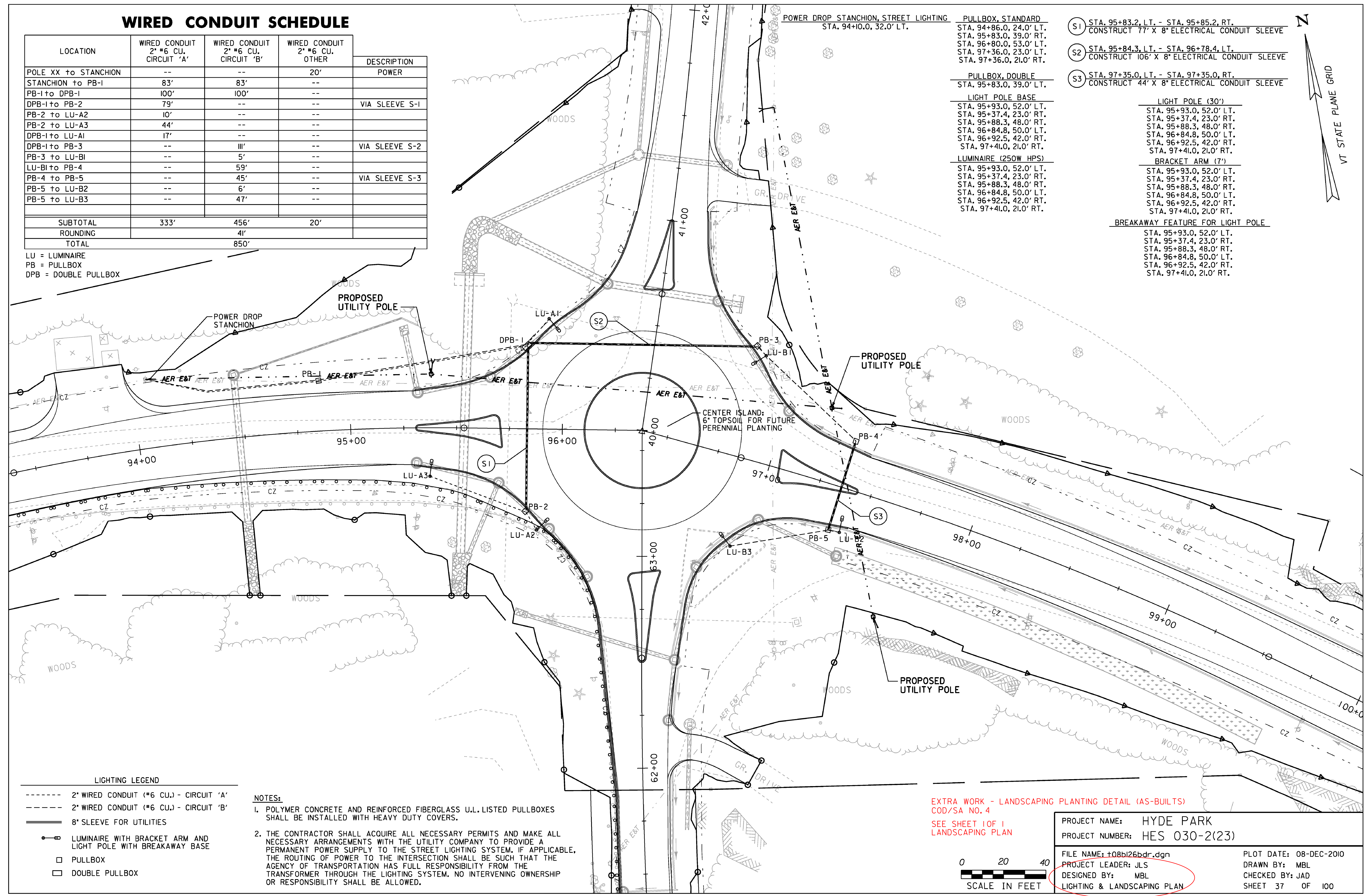
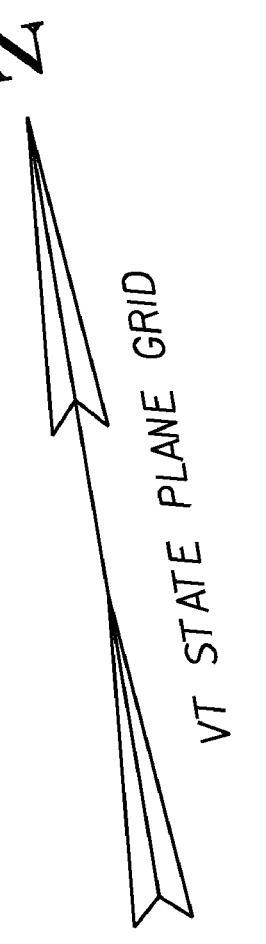
LOCATION	WIRED CONDUIT 2" #6 CU. CIRCUIT 'A'	WIRED CONDUIT 2" #6 CU. CIRCUIT 'B'	WIRED CONDUIT 2" #6 CU. OTHER	DESCRIPTION
POLE XX to STANCHION	--	--	20'	POWER
STANCHION to PB-1	83'	83'	--	
PB-1 to DPB-1	100'	100'	--	
DPB-1 to PB-2	79'	--	--	VIA SLEEVE S-1
PB-2 to LU-A2	10'	--	--	
PB-2 to LU-A3	44'	--	--	
DPB-1 to LU-A1	17'	--	--	
DPB-1 to PB-3	--	111'	--	VIA SLEEVE S-2
PB-3 to LU-B1	--	5'	--	
LU-B1 to PB-4	--	59'	--	
PB-4 to PB-5	--	45'	--	VIA SLEEVE S-3
PB-5 to LU-B2	--	6'	--	
PB-5 to LU-B3	--	47'	--	
SUBTOTAL	333'	456'	20'	
ROUNDING	4'			
TOTAL		850'		

LU = LUMINAIRE
PB = PULLBOX
DPB = DOUBLE PULLBOX

- PULLBOX, STANDARD**
STA. 94+86.0, 24.0' LT.
STA. 95+83.0, 39.0' RT.
STA. 96+80.0, 53.0' LT.
STA. 97+36.0, 23.0' LT.
STA. 97+36.0, 21.0' RT.
- PULLBOX, DOUBLE**
STA. 95+83.0, 39.0' LT.
- LIGHT POLE BASE**
STA. 95+93.0, 52.0' LT.
STA. 95+37.4, 23.0' RT.
STA. 95+88.3, 48.0' RT.
STA. 96+84.8, 50.0' LT.
STA. 96+92.5, 42.0' RT.
STA. 97+41.0, 21.0' RT.
- LUMINAIRE (250W HPS)**
STA. 95+93.0, 52.0' LT.
STA. 95+37.4, 23.0' RT.
STA. 95+88.3, 48.0' RT.
STA. 96+84.8, 50.0' LT.
STA. 96+92.5, 42.0' RT.
STA. 97+41.0, 21.0' RT.

- (S1) STA. 95+83.2, LT. - STA. 95+85.2, RT.
CONSTRUCT 77' X 8" ELECTRICAL CONDUIT SLEEVE
- (S2) STA. 95+84.3, LT. - STA. 96+78.4, LT.
CONSTRUCT 106' X 8" ELECTRICAL CONDUIT SLEEVE
- (S3) STA. 97+35.0, LT. - STA. 97+35.0, RT.
CONSTRUCT 44' X 8" ELECTRICAL CONDUIT SLEEVE

- LIGHT POLE (30')**
STA. 95+93.0, 52.0' LT.
STA. 95+37.4, 23.0' RT.
STA. 95+88.3, 48.0' RT.
STA. 96+84.8, 50.0' LT.
STA. 96+92.5, 42.0' RT.
STA. 97+41.0, 21.0' RT.
- BRACKET ARM (7')**
STA. 95+93.0, 52.0' LT.
STA. 95+37.4, 23.0' RT.
STA. 95+88.3, 48.0' RT.
STA. 96+84.8, 50.0' LT.
STA. 96+92.5, 42.0' RT.
STA. 97+41.0, 21.0' RT.
- BREAKAWAY FEATURE FOR LIGHT POLE**
STA. 95+93.0, 52.0' LT.
STA. 95+37.4, 23.0' RT.
STA. 95+88.3, 48.0' RT.
STA. 96+84.8, 50.0' LT.
STA. 96+92.5, 42.0' RT.
STA. 97+41.0, 21.0' RT.



- LIGHTING LEGEND**
- 2" WIRED CONDUIT (#6 CU.) - CIRCUIT 'A'
 - 2" WIRED CONDUIT (#6 CU.) - CIRCUIT 'B'
 - ===== 8" SLEEVE FOR UTILITIES
 - LUMINAIRE WITH BRACKET ARM AND LIGHT POLE WITH BREAKAWAY BASE
 - PULLBOX
 - DOUBLE PULLBOX

- NOTES:**
- POLYMER CONCRETE AND REINFORCED FIBERGLASS U.L. LISTED PULLBOXES SHALL BE INSTALLED WITH HEAVY DUTY COVERS.
 - THE CONTRACTOR SHALL ACQUIRE ALL NECESSARY PERMITS AND MAKE ALL NECESSARY ARRANGEMENTS WITH THE UTILITY COMPANY TO PROVIDE A PERMANENT POWER SUPPLY TO THE STREET LIGHTING SYSTEM, IF APPLICABLE. THE ROUTING OF POWER TO THE INTERSECTION SHALL BE SUCH THAT THE AGENCY OF TRANSPORTATION HAS FULL RESPONSIBILITY FROM THE TRANSFORMER THROUGH THE LIGHTING SYSTEM. NO INTERVENING OWNERSHIP OR RESPONSIBILITY SHALL BE ALLOWED.

EXTRA WORK - LANDSCAPING PLANTING DETAIL (AS-BUILTS)
COD/SA NO. 4
SEE SHEET 101 I
LANDSCAPING PLAN



PROJECT NAME:	HYDE PARK	PLOT DATE:	08-DEC-2010
PROJECT NUMBER:	HES 030-2(23)	DRAWN BY:	MBL
FILE NAME:	+08b126bdr.dgn	CHECKED BY:	JAD
PROJECT LEADER:	JLS	SHEET	37 OF 100
DESIGNED BY:	MBL		
LIGHTING & LANDSCAPING PLAN			