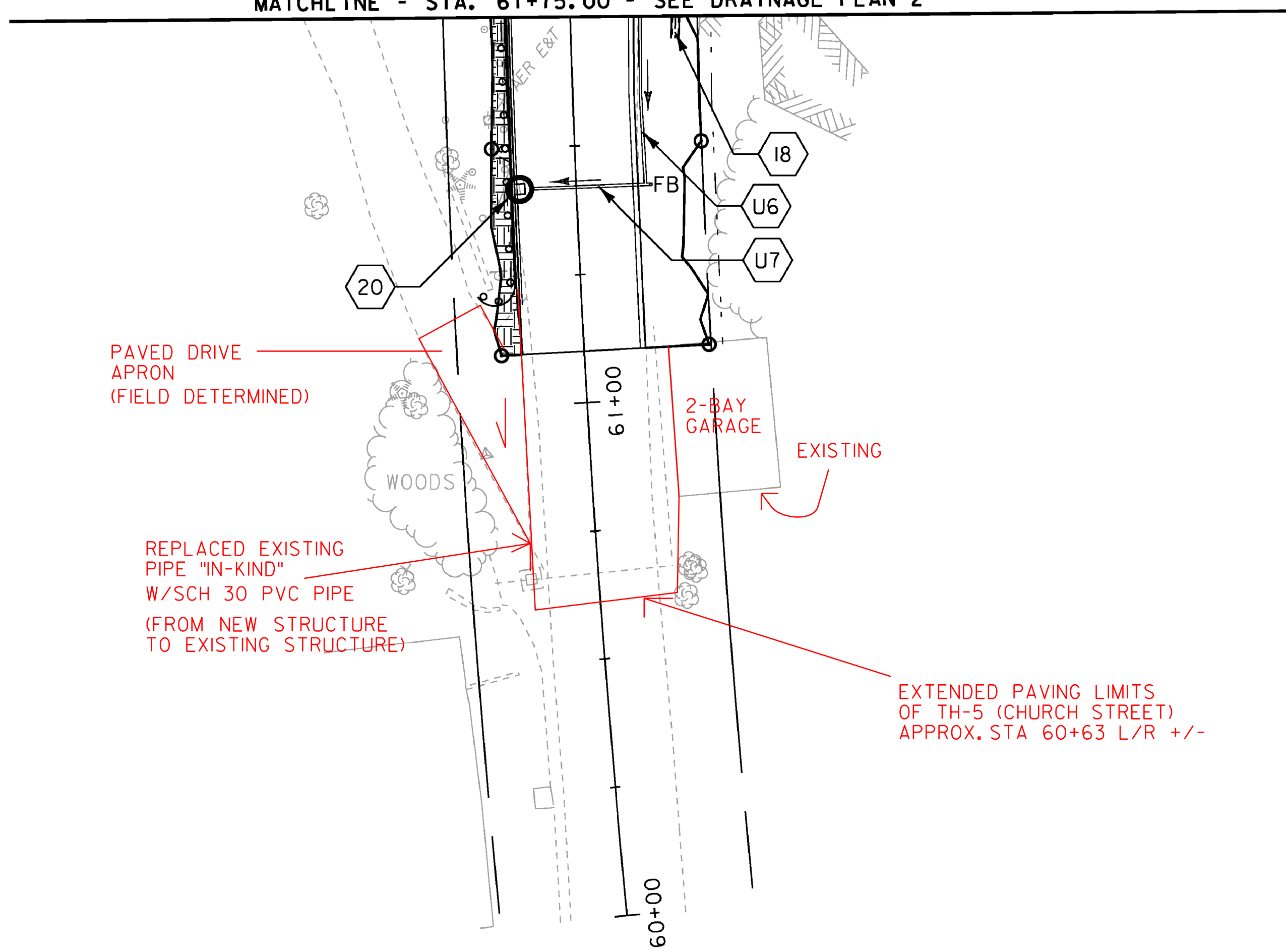


MATCHLINE - STA. 61+75.00 - SEE DRAINAGE PLAN 2



PERMANENT EROSION MATTING
STA. 61+10, LT. - STA. 61+75, LT.

DRAINAGE CONSTRUCTION NOTES

20 STA. 61+42.0, LT.
REMOVE EXISTING DRAINAGE STRUCTURE
CONSTRUCT NEW CB (CB-22), RIM = 696.71'
WITH CAST IRON GRATE, TYPE D
TIE EXISTING PIPE INTO NEW STRUCTURE

18 SEE CONSTRUCTION NOTE ON DRAINAGE PLAN 6

UNDERDRAIN CONSTRUCTION NOTES

U6 SEE CONSTRUCTION NOTE ON DRAINAGE PLAN 6

U7 STA. 61+41.9, 14.6' RT. - STA. 61+42.0, 11.0' LT.
CONSTRUCT NEW 6" X 23' UNDERDRAIN CARRIER PIPE
INV. IN = 692.83', INV. OUT = 692.37'
CONSTRUCT NEW FLUSHING BASINS AT 61+41.9, RT.

NOTES:
I. FOR DRAINAGE CONSTRUCTION NOTES, SEE DRAINAGE PLAN 6.

LEGEND

 PERMANENT EROSION MATTING



PROJECT NAME: HYDE PARK	PLOT DATE: 08-DEC-2010
PROJECT NUMBER: HES 030-2(23)	DRAWN BY: MBL
FILE NAME: t08b126bdr.dgn	CHECKED BY: JAD
DESIGNED BY: MBL	SHEET 29 OF 100
DRAINAGE PLAN 5	