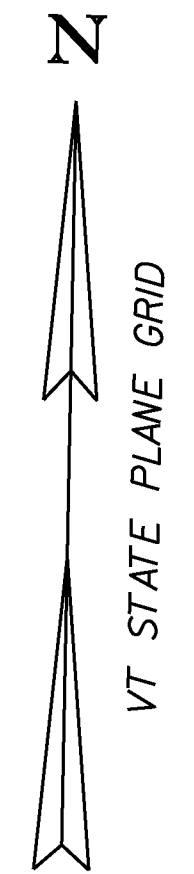


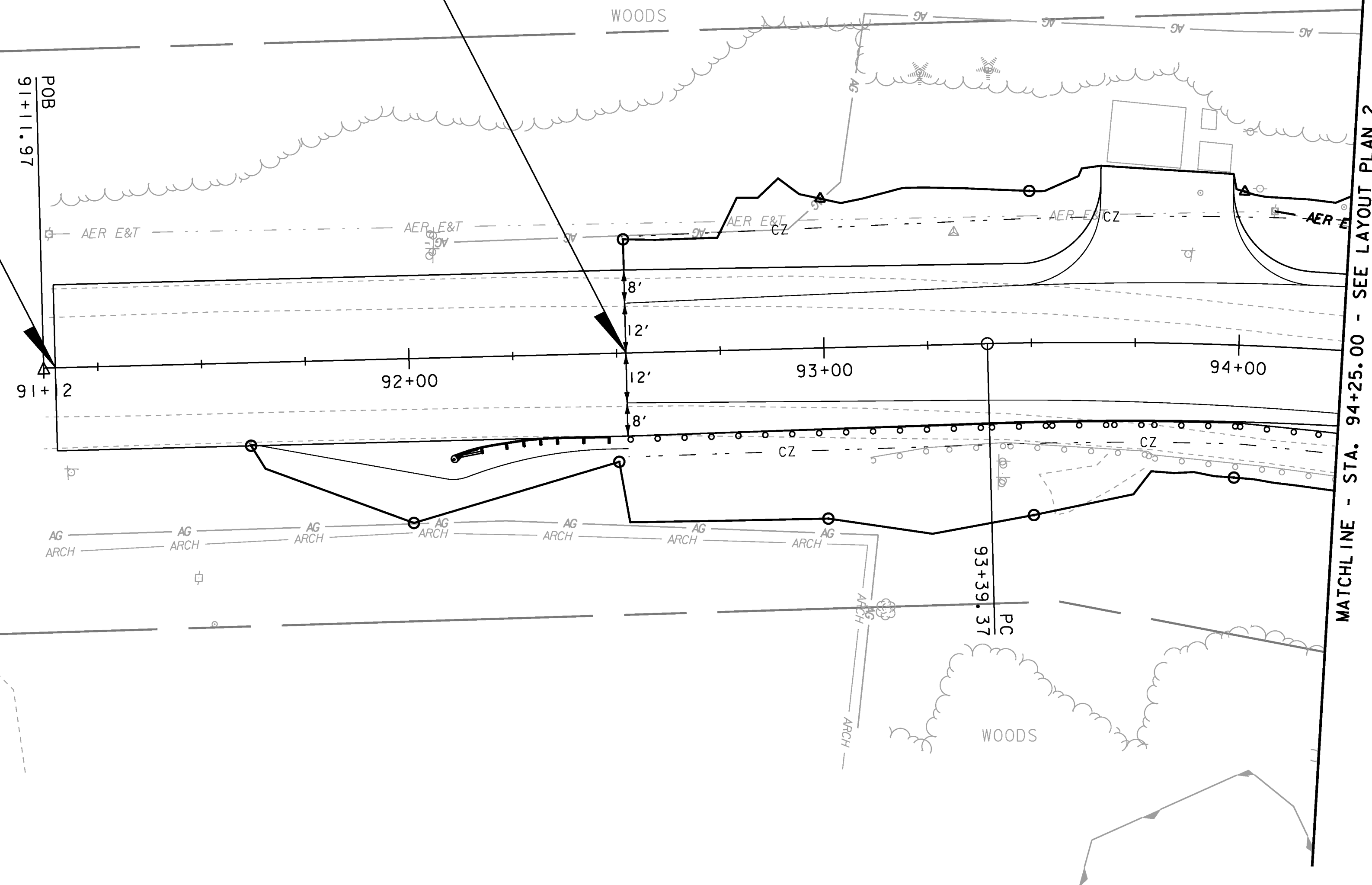
STEEL BEAM GUARDRAIL, GALVANIZED WITH 8 FEET POSTS  
 STA. 92+47, RT. - STA. 94+25, RT.  
 REMOVAL AND DISPOSAL OF GUARDRAIL  
 STA. 93+10, RT. - STA. 94+25, RT.  
 MANUFACTURED TERMINAL SECTION, FLARED  
 STA. 92+09.5, RT. - STA. 92+47, RT.

CONSTRUCT DRIVE  
 STA. 93+82, LT. (GRAVEL) (32')  
 SPECIAL PROVISION  
 (HAND-PLACED BIT. CONC.  
 MATERIALS, DRIVE)  
 STA. 93+82, LT.



**VT ROUTE 15 STA. 92+52.27  
 BEGIN PROJECT  
 HES 030-2(23)  
 END APPROACH**

**VT ROUTE 15  
 STA. 91+14.77  
 BEGIN APPROACH**



PROJECT NAME: HYDE PARK	FILE NAME: t08b126bdr.dgn	PLOT DATE: 08-DEC-2010
PROJECT NUMBER: HES 030-2(23)	PROJECT LEADER: JLS	DRAWN BY: MBL
	DESIGNED BY: MBL	CHECKED BY: JAD
	LAYOUT PLAN 1	SHEET 15 OF 100

