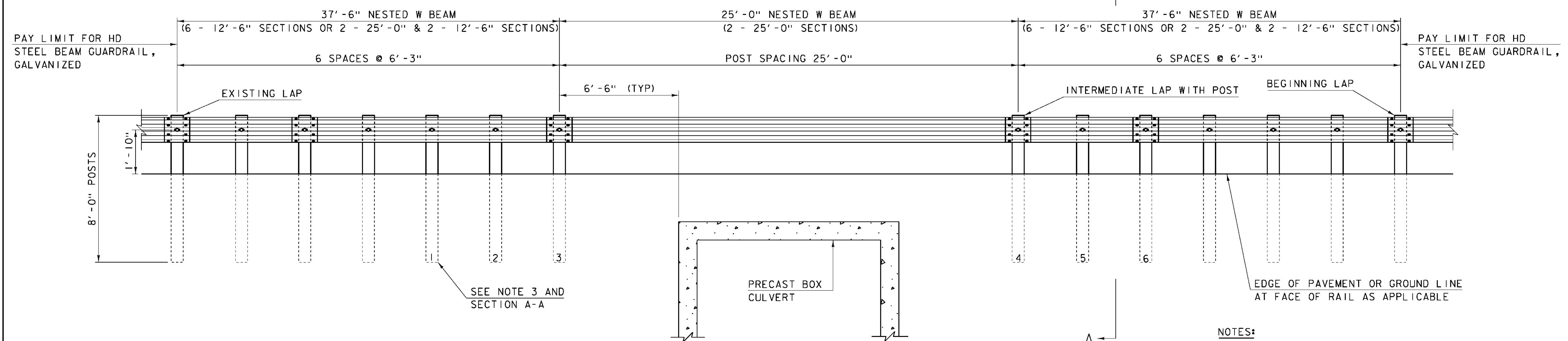


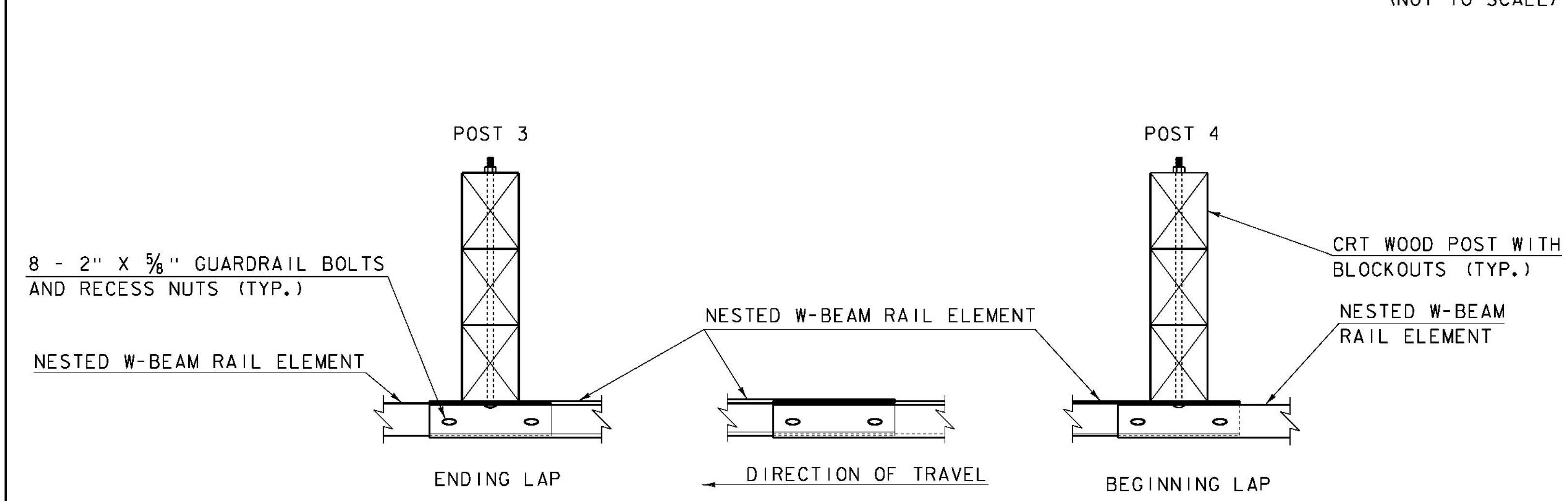
**NESTED RAILING PLAN VIEW**

(NOT TO SCALE)



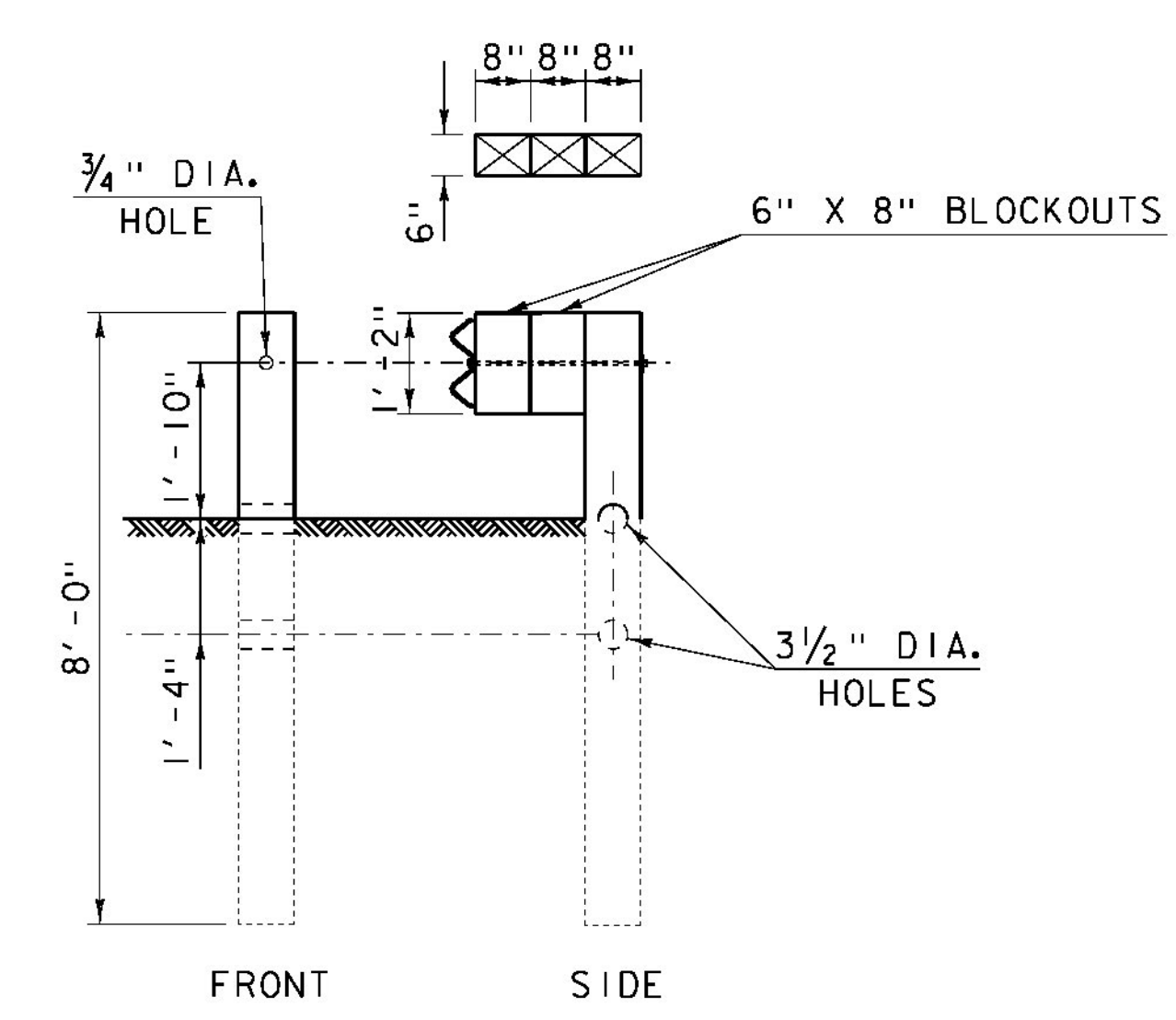
**NESTED RAILING ELEVATION VIEW**

(NOT TO SCALE)



**INTERMEDIATE LAP WITHOUT POST**

(NOT TO SCALE)



**SECTION A-A**

(POSTS 1 THRU 6)

(SEE NOTES 3 & 4)

- NOTES:**
1. RAIL MEETS TEST LEVEL 3 REQUIREMENTS OF NCHRP REPORT 350.
  2. 25'-0" RAIL LENGTH WILL BE USED TO ELIMINATE THE INTERMEDIATE LAP WITHOUT A POST.
  3. POSTS 1 THRU 6 ARE BREAKAWAY CONTROLLED RELEASING TERMINAL (CRT) POSTS, SEE SECTION A-A FOR DETAILS.
  4. POSTS 1 THRU 6 HAVE TWO, 6" X 8" BLOCKOUTS. SEE SECTION A-A FOR DETAILS.
  5. ON POSTS 1 THRU 6, GUARDRAIL BOLT "D", AS SHOWN ON STD G1, SHALL BE 26" LONG.
  6. ON ALL POSTS WHERE THE RAIL IS DOUBLE-NESTED GUARDRAIL BOLT "A", AS SHOWN ON STD G1, SHALL BE 2" LONG.
  7. ALL POSTS WHERE THE RAIL IS DOUBLE-NESTED SHALL BE 8 FEET LONG TO PROVIDE FOR A 2'-8" SLOPE BREAKLINE.
  8. SEE STD G1 FOR ADDITIONAL GUARDRAIL DETAILS.

PROJECT NAME:	ADDISON
PROJECT NUMBER:	STP CULV (14)
FILE NAME:	s08b062rail.det.dgn
PROJECT LEADER:	K. HIGGINS
DESIGNED BY:	J. SALVATORI
NESTED HDSB GUARDRAIL DETAILS	
PLOT DATE:	15-MAR-2013
DRAWN BY:	J. SALVATORI
CHECKED BY:	W. LAMMER
SHEET	13 OF 28