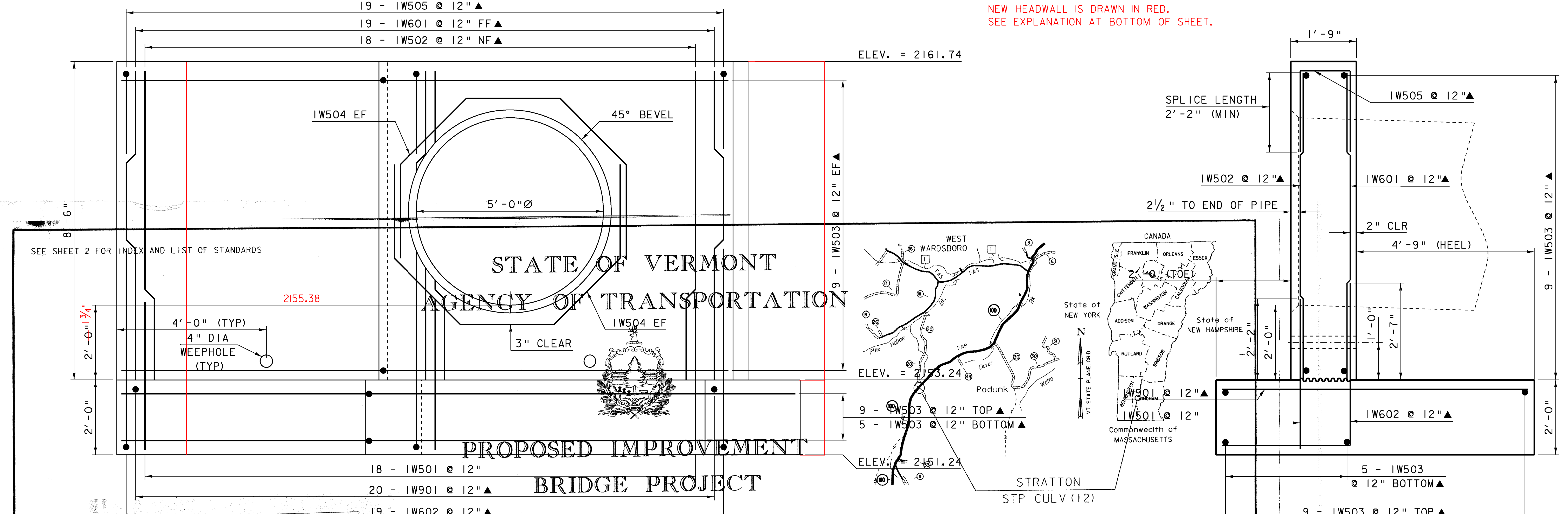


NEW HEADWALL IS DRAWN IN RED.  
SEE EXPLANATION AT BOTTOM OF SHEET.

ELEV. = 2161.74

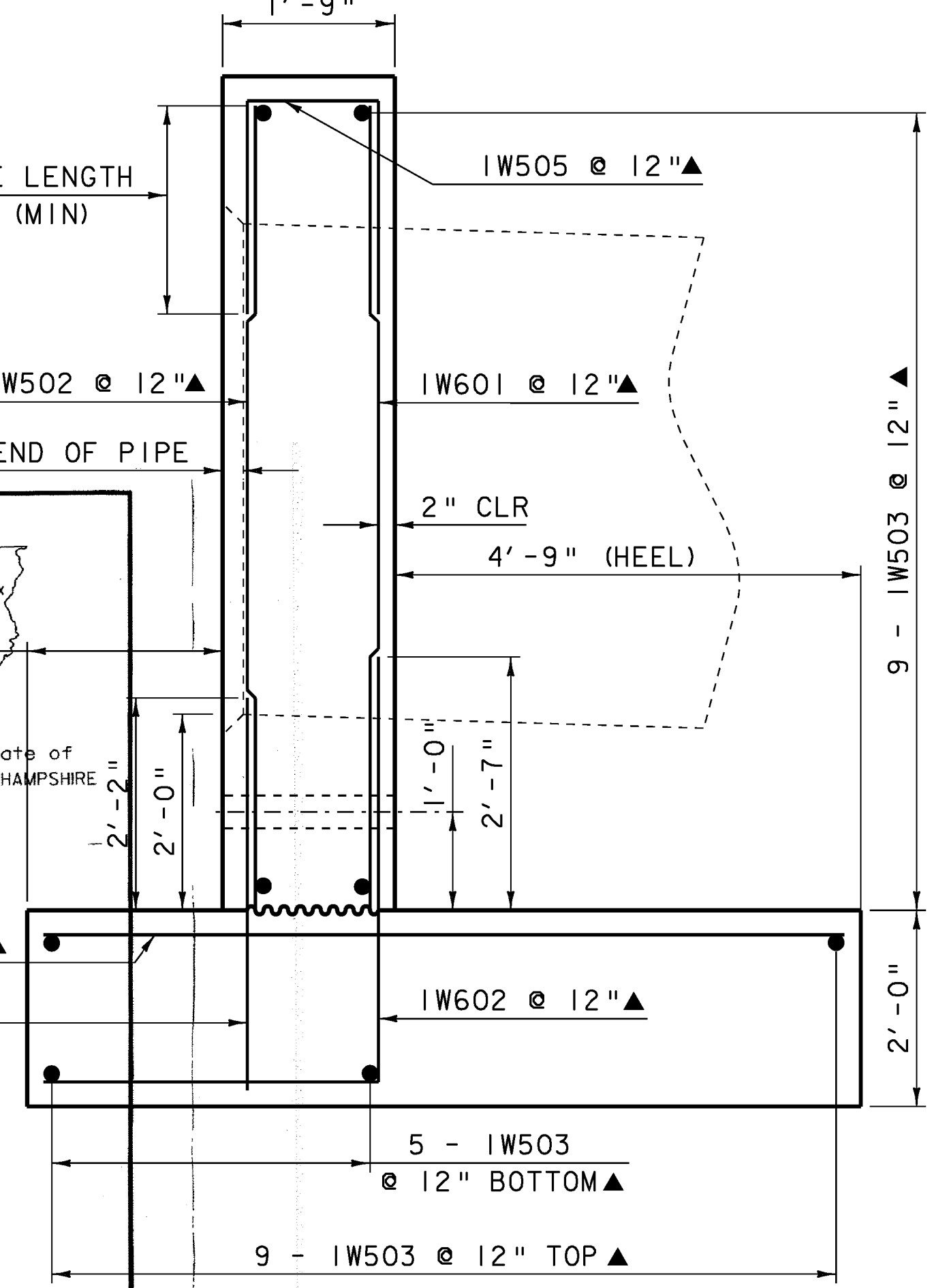
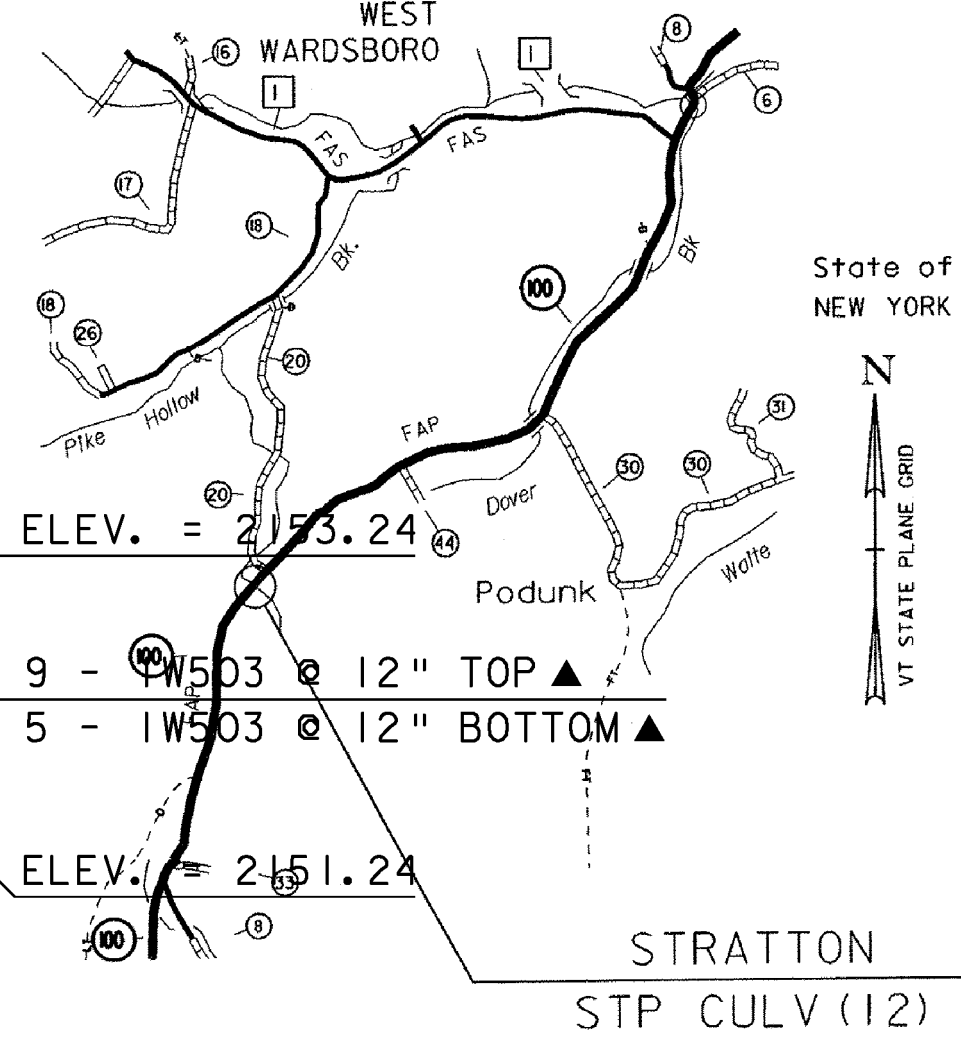


SEE SHEET 2 FOR INDEX AND LIST OF STANDARDS

2155.38

STATE OF VERMONT  
AGENCY OF TRANSPORTATION

PROPOSED IMPROVEMENT  
BRIDGE PROJECT



HEADWALL SECTION  
SCALE 3/4" = 1'-0"

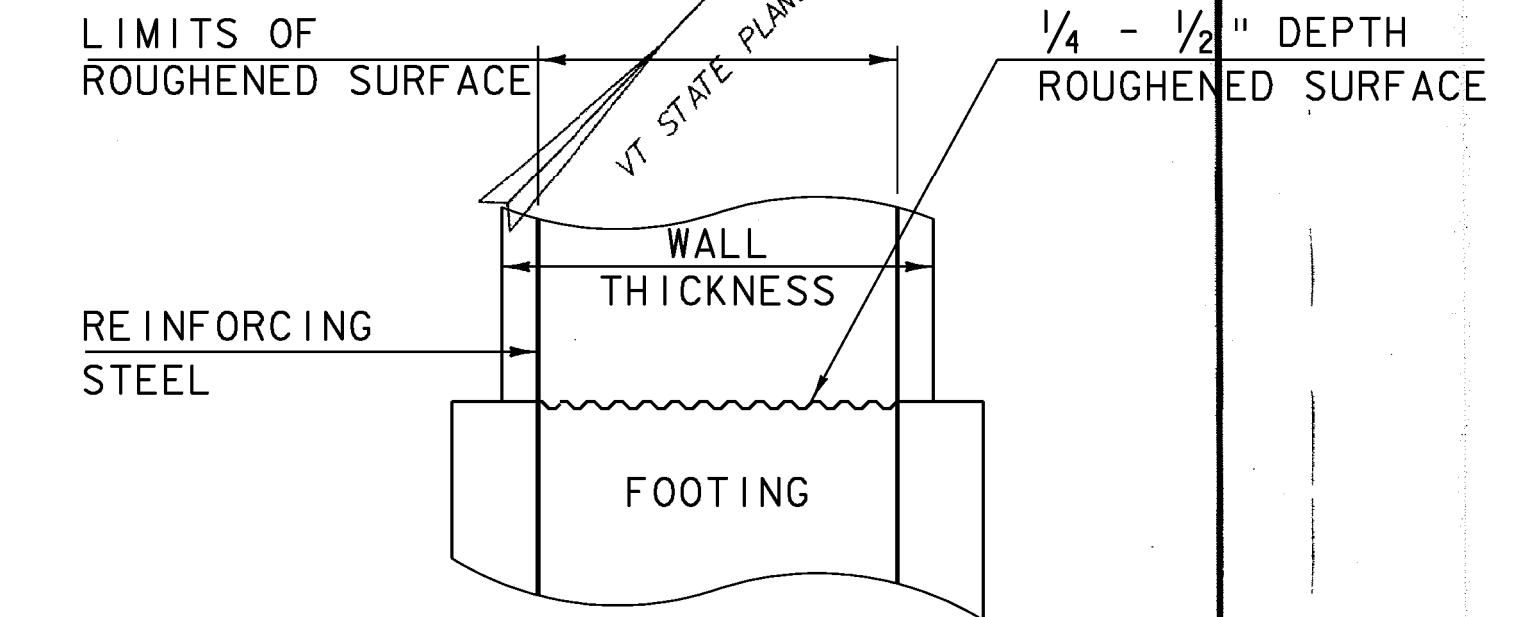
**RECORD PLANS**

CONTRACTOR: ALPINE CONSTRUCTION, LLC - SCHUYLVILLE, NY  
 RESIDENT ENGINEER: MARK HAUGHWOUT  
 CONSTRUCTION BEGAN: SEPTEMBER 1, 2010  
 CONSTRUCTION COMPLETE: JULY 19, 2011  
 RECORD PLANS BY: MARK HAUGHWOUT & C. PIERCE  
 I HEREBY CERTIFY THAT ALL THE CONSTRUCTION REQUIRED BY THIS SET OF DRAWINGS HAS BEEN ACCOMPLISHED AS INDICATED HEREIN.  
 DATE: April 10, 2012

TOWN OF STRATTON  
COUNTY OF WINDHAM  
SCALE 3/4" = 1'-0"  
ROUTE NO: VT 100, RURAL MINOR ARTERIAL BRIDGE NO: 64

PROJECT LOCATION: 11.5 MILES NORTH OF JUNCTION WITH VT ROUTE 9, MM 1.03  
 PROJECT DESCRIPTION: THE PROJECT SHALL CONSIST OF LINING THE EXISTING CULVERT, AND REPLACING THE EXISTING INLET HEADWALL.

LENGTH OF STRUCTURE: N/A  
 LENGTH OF PROJECT: 100.00'



TYPICAL CONCRETE CONSTRUCTION JOINT  
(NOT TO SCALE)

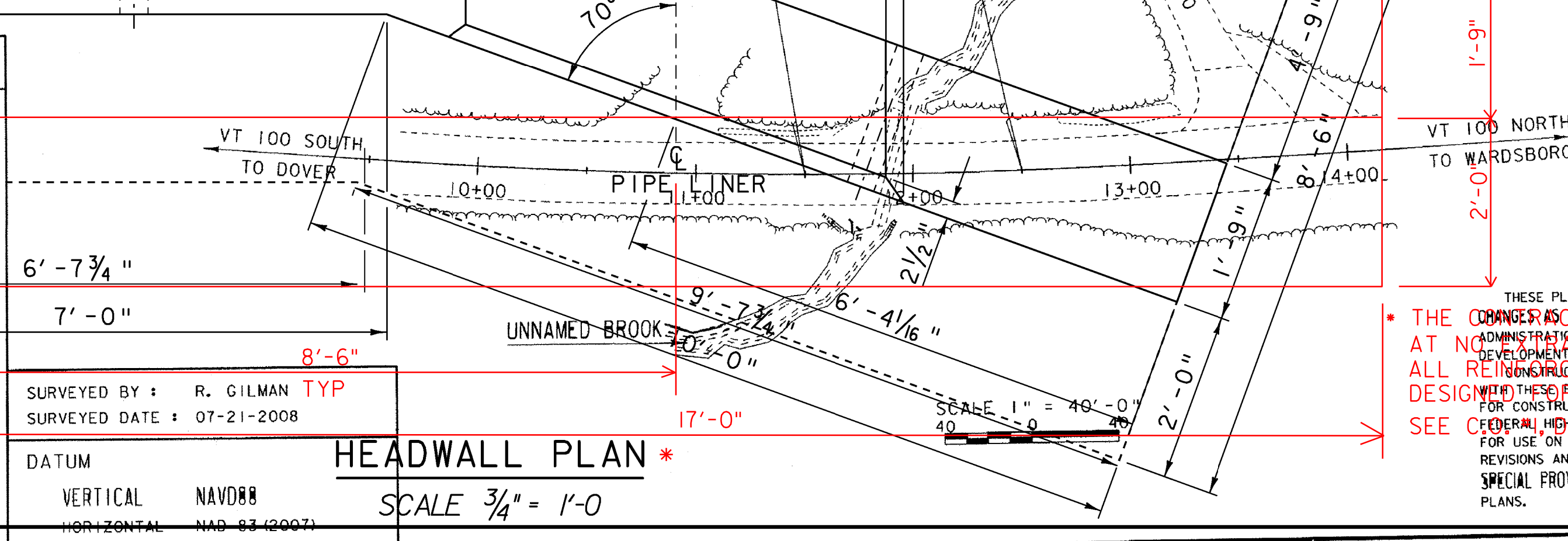
1. THE SURFACE OF THE CONCRETE CONSTRUCTION JOINTS SHALL BE CLEANED AND FREE OF LAITANCE.
2. IMMEDIATELY BEFORE NEW CONCRETE IS PLACED, ALL CONSTRUCTION JOINTS SHALL BE WETTED AND STANDING WATER REMOVED.

**NOTE:**  
 NF = NEAR FACE  
 FF = FAR FACE  
 EF = EACH FACE  
 ▲ = CUT TO FIT IN FIELD  
 3" CLR. UNLESS OTHERWISE SPECIFIED ON THE PLANS.

QUALITY ASSURANCE PROGRAM: LEVEL 2

**CONVENTIONAL SYMBOLS**

COUNTY LINE	[Symbol]
TOWN LINE	[Symbol]
LIMITS OF ACCESS	[Symbol]
POINT OF ACCESS	[Symbol]
FENCE LINE	[Symbol]
STONE WALL	[Symbol]
TRAVELED WAY	[Symbol]
RAILROAD	[Symbol]
SURVEY LINE	[Symbol]
CULVERT	[Symbol]
POWER POLE	[Symbol]
TELEPHONE POLE	[Symbol]
TREES	[Symbol]
CONTROL OF ACCESS	[Symbol]
PROPERTY LINE	[Symbol]
R.O.W. TAKING LINE	[Symbol]
SLOPE RIGHTS	[Symbol]
TOP OF CUT	[Symbol]
TOE OF SLOPE	[Symbol]



HEADWALL PLAN \*  
SCALE 3/4" = 1'-0"

THESE PLANS ARE SUBJECT TO SUCH ENGINEERING CHANGES AS MAY BE REQUIRED BY THE FEDERAL HIGHWAY ADMINISTRATION OR THE DIRECTOR OF PROGRAM DEVELOPMENT AT NO COST TO THE PROJECT FOR EAST OF VERMONT DESIGN. THESE PLANS AND THE STANDARD SPECIFICATIONS FOR CONSTRUCTION DATED 2006, AS APPROVED BY THE FEDERAL HIGHWAY ADMINISTRATION ON JUNE 15, 2006 FOR USE ON THIS PROJECT, INCLUDING ALL SUBSEQUENT REVISIONS AND SUCH REVISED SPECIFICATIONS AND SPECIAL PROVISIONS AS ARE INCORPORATED IN THESE PLANS.

PROJECT NAME:	STRATTON
PROJECT NUMBER:	STP CULV(12)
FILE NAME:	s08b058sub.dgn
PROJECT LEADER:	C.P. WILLIAMS
DESIGNED BY:	H.I. SALLS
HEADWALL DETAILS:	
PLOT DATE:	01-JUN-2010
DRAWN BY:	D.D. BEARD
CHECKED BY:	H.I. SALLS
SHEET 9 OF 15	