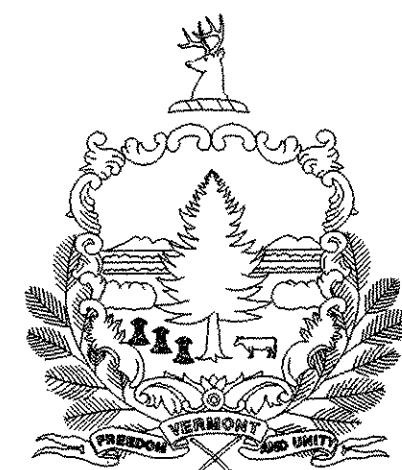


STATE OF VERMONT
AGENCY OF TRANSPORTATION



PROPOSED IMPROVEMENT
TOWNS OF WOODBURY & HARDWICK
COUNTIES OF WASHINGTON & CALEDONIA
VT ROUTE 14 & VT ROUTE 15

INDEX OF SHEETS

1. COMPOSITE TITLE SHEET
2. COMPOSITE TYPICAL SECTION
3. COMPOSITE QUANTITY SHEET

INDEX OF STP SURF(8) SHEETS

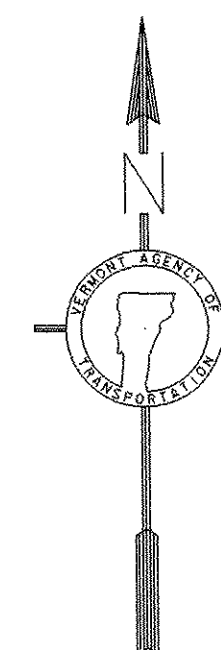
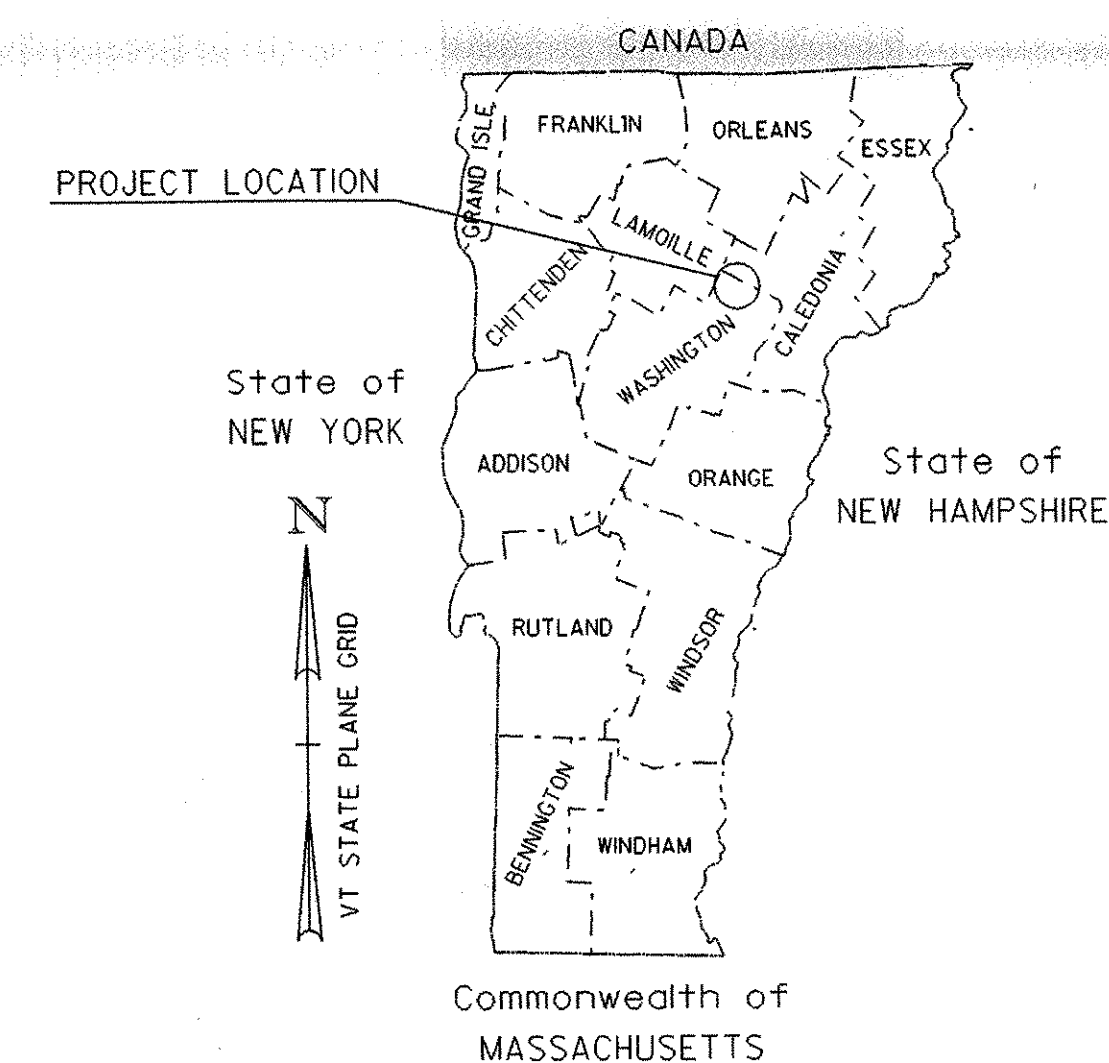
4. TITLE SHEET
5. QUANTITY SHEET
- 6.-7. PAVEMENT MARKING LAYOUTS
8. TEMPORARY TRAFFIC CONTROL PLAN

INDEX OF STP SURF(9) SHEETS

9. TITLE SHEET
10. QUANTITY SHEET
11. PAVEMENT MARKING LAYOUT
12. TEMPORARY TRAFFIC CONTROL PLAN

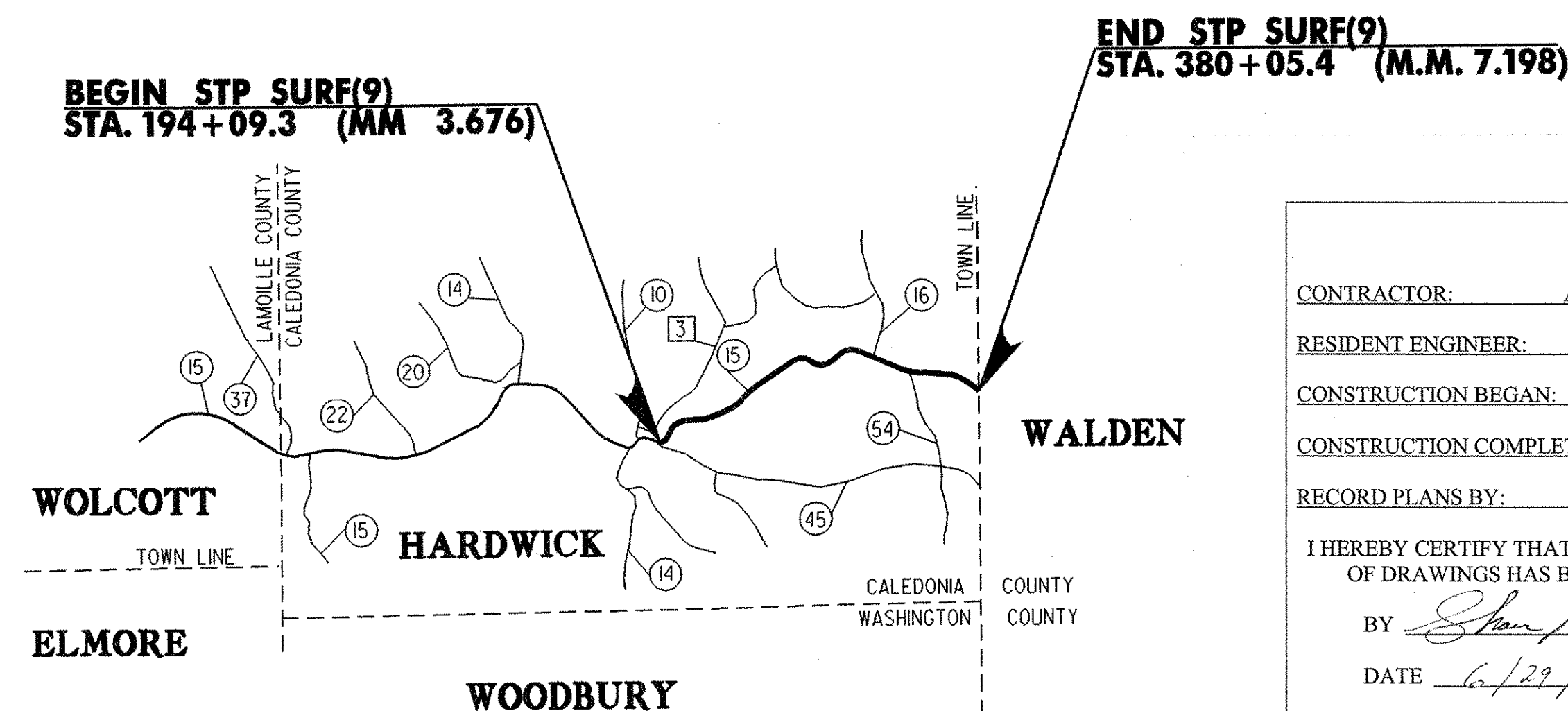
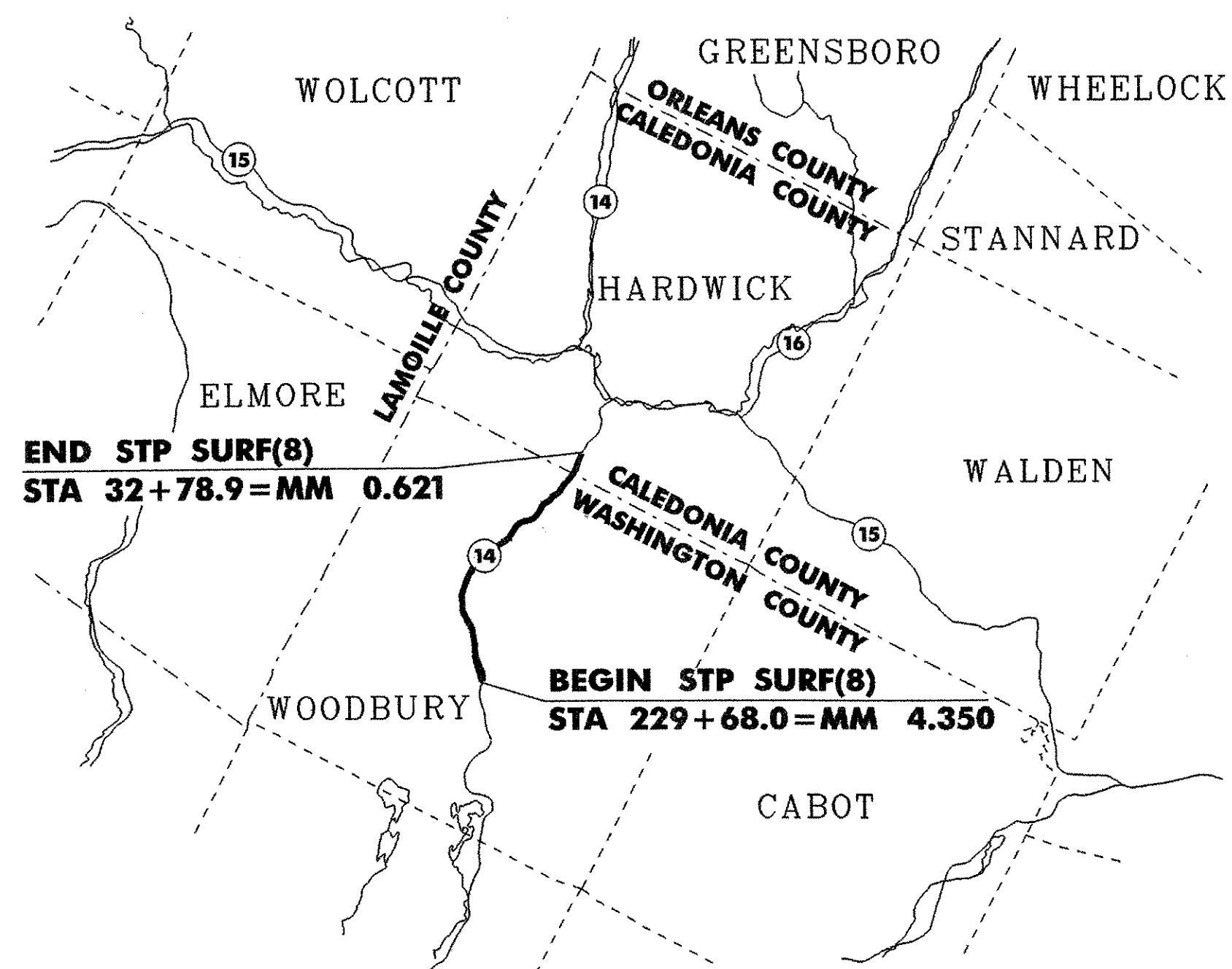
VAOT STANDARDS

E-100	CONSTRUCTION APPROACH SIGNS	01/02/04
E-101	CONSTRUCTION SIGN DETAILS	05/30/03
E-102	CONSTRUCTION SIGN DETAILS	06/30/03
E-102A	CONSTRUCTION SIGN DETAILS	05/01/04
E-106	TRAFFIC CONTROL - MISCELLANEOUS DETAILS	03/01/04
E-107A	BREAKAWAY BARRICADE DETAILS	08/08/95
E-191	PAVEMENT MARKING DETAILS	02/01/99



WOODBURY - HARDWICK
STP SURF(8)
SEE SHEET 4 FOR ADDITIONAL
PROJECT INFORMATION

HARDWICK
STP SURF(9)
SEE SHEET 9 FOR ADDITIONAL
PROJECT INFORMATION



RECORD PLANS	
CONTRACTOR:	ALL STATES ASPHALT, INC. - SUNDERLAND, MA
RESIDENT ENGINEER:	SHANE MORRIN
CONSTRUCTION BEGAN:	AUGUST 4, 2008
CONSTRUCTION COMPLETE:	OCTOBER 7, 2008
RECORD PLANS BY:	SHANE MORIN, C. PIERCE
I HEREBY CERTIFY THAT ALL THE CONSTRUCTION REQUIRED BY THIS SET OF DRAWINGS HAS BEEN ACCOMPLISHED AS INDICATED HEREIN.	
BY	<i>Shane Morin</i> RESIDENT ENGINEER
DATE	6/29/09
NOTE: Any further information concerning final quantities, amounts or other details relative to this project may be found at Central Files in the electronic archives.	

CONVENTIONAL SIGNS

COUNTY LINE	---
TOWN LINE	- - - -
LIMITS OF ACCESS	○-○-○-○
POINT OF ACCESS	X
FENCE LINE	-x-x-x-
STONE WALL	○○○○○○○○○○
TRAVELED WAY	----
GUARD RAIL	○-○-○-○
RAILROAD	+
SURVEY LINE	+
CULVERT	—+—+—+—
POWER POLE	⊕
TELEPHONE POLE	⊕
TREES	⊗
CONTROL OF ACCESS	///
PROPERTY LINE	---
R.O.W. TAKING LINE	—SR—
SLOPE RIGHTS	○-△
TOP OF CUT	△
TOE OF SLOPE	○

DATUM	
VERTICAL	N/A
HORIZONTAL	N/A

THESE PLANS ARE SUBJECT TO SUCH ENGINEERING CHANGES AS MAY BE REQUIRED BY THE FEDERAL HIGHWAY ADMINISTRATION OR THE DIRECTOR OF PROGRAM DEVELOPMENT. CONSTRUCTION IS TO BE CARRIED ON IN ACCORDANCE WITH THESE PLANS AND THE STANDARD SPECIFICATIONS FOR CONSTRUCTION DATED 2006, AS APPROVED BY THE FEDERAL HIGHWAY ADMINISTRATION ON JANUARY 15, 2006 FOR USE ON THIS PROJECT, INCLUDING ALL SUBSEQUENT REVISIONS AND SUCH REVISED SPECIFICATIONS AND SPECIAL PROVISIONS AS ARE INCORPORATED IN THESE PLANS.

APPROVED	<i>Jan V. Boh</i> DATE 6-18-2008
	DIRECTOR OF PROGRAM DEVELOPMENT
PROJECT MANAGER: TED DOMEY	
PROJECT WOODBURY - HARDWICK & HARDWICK STP SURF(8) & STP SURF(9)	
SHEET 1 OF 12 SHEETS	