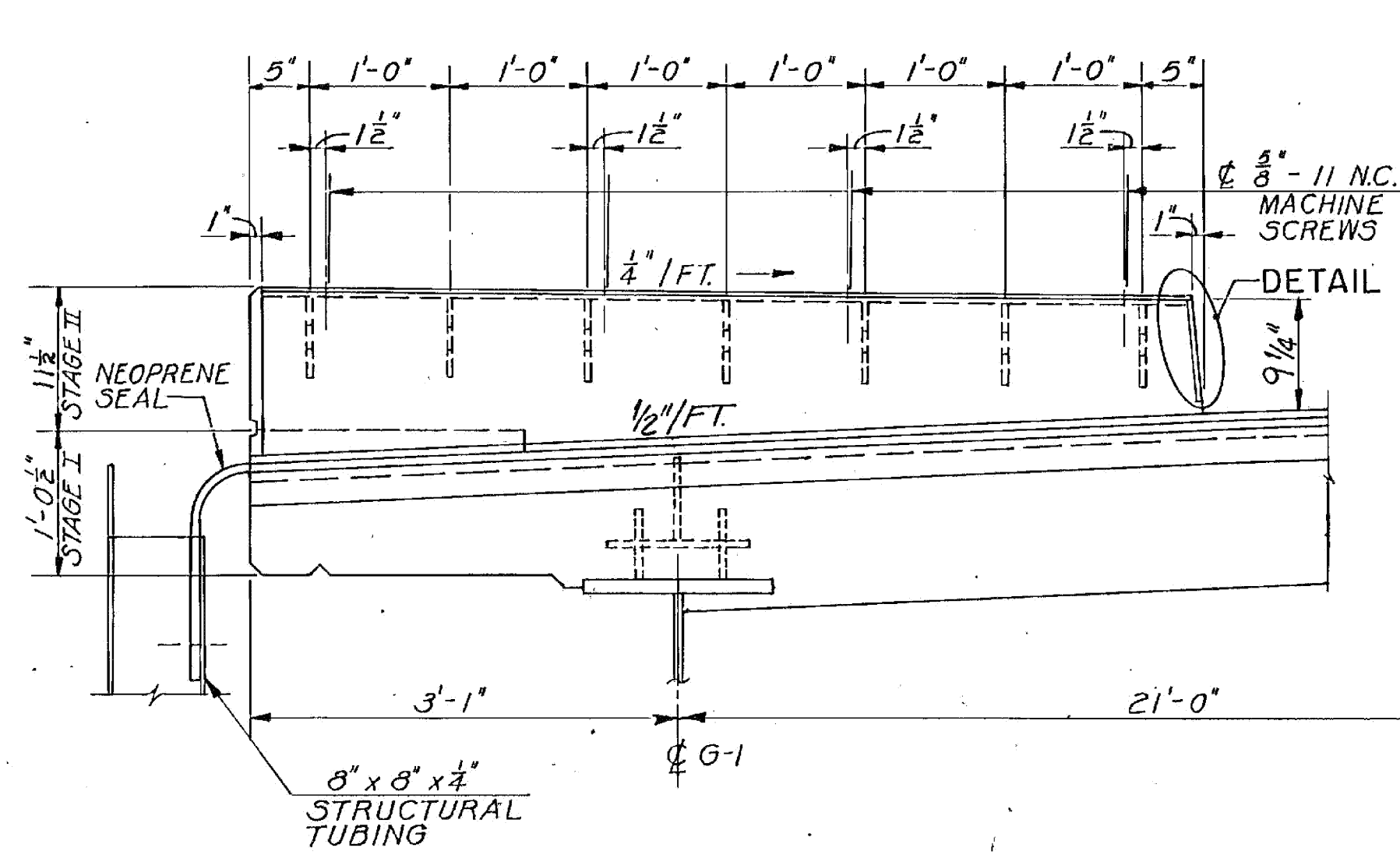
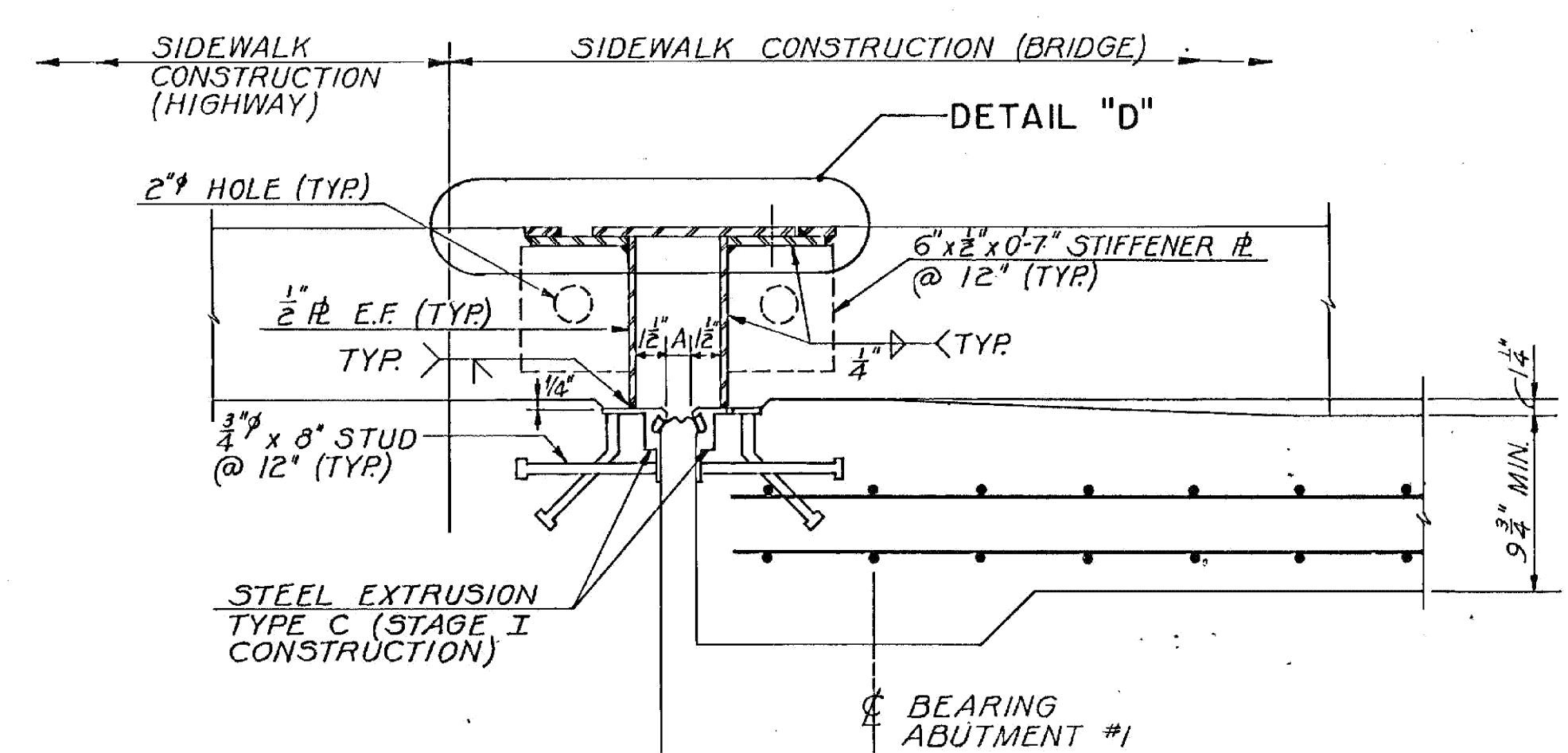


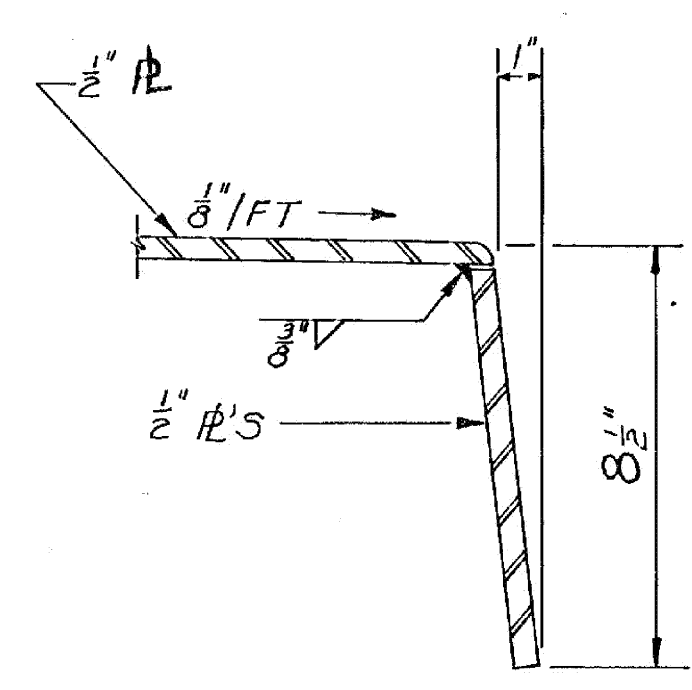
NOTE: ABUTMENT #2 JOINT OPPOSITE HAND EXCEPT ROADWAY CROSS SLOPE



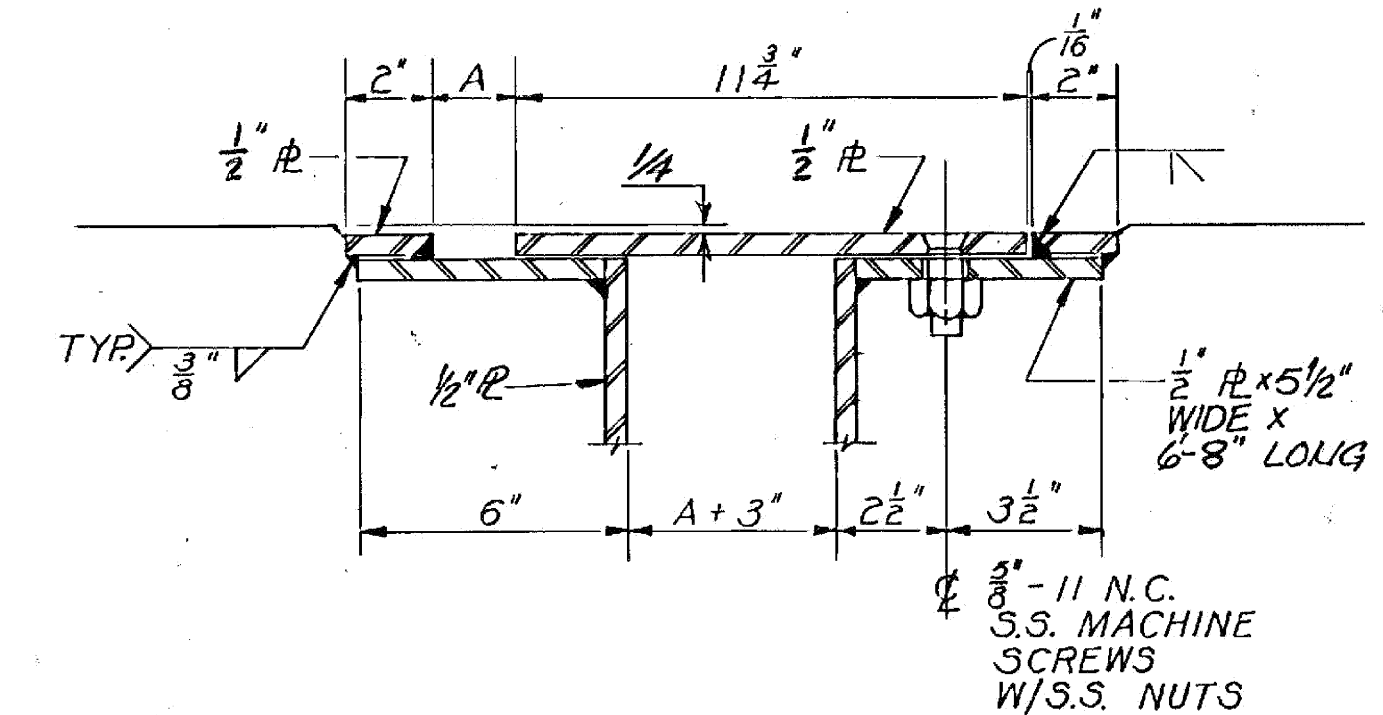
SECTION A-A
SCALE: 1" = 1'-0"



SECTION B-B
SCALE: 1 1/2" = 1'-0"



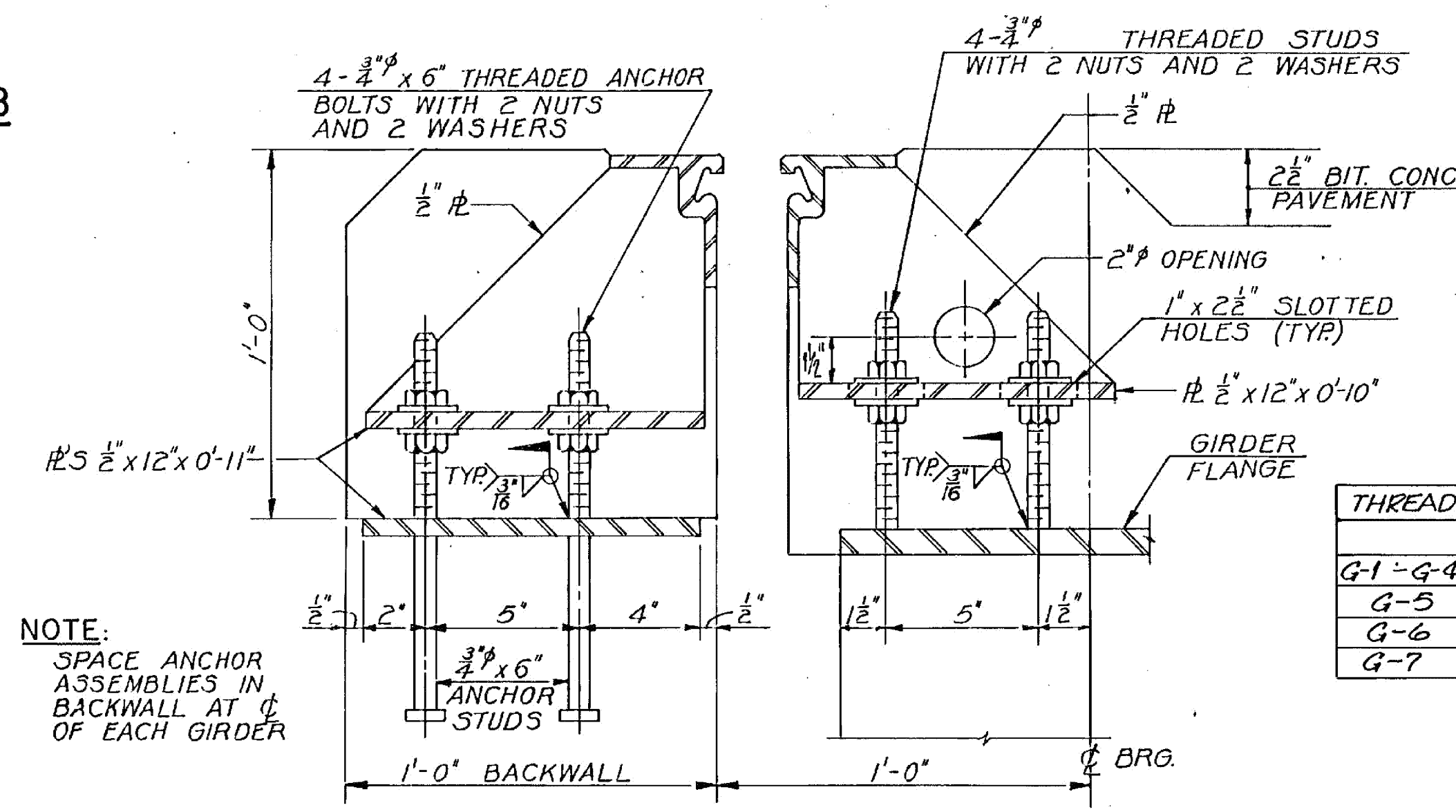
DETAIL "C"
SCALE: 3" = 1'-0"



DETAIL "D"
SCALE: 3" = 1'-0"

SETTING TABLE

TEMP °F	"A"
20	2 1/16"
30	1 13/16"
40	1 1/8"
50	1 1/16"
60	1 1/8"
70	1 1/16"
80	1 1/8"
90	1 1/16"
100	1 1/8"



NOTE: SPACE ANCHOR ASSEMBLIES IN BACKWALL AT CL OF EACH GIRDER

EXTRUSION SUPPORT DETAIL
SCALE: 3" = 1'-0"

THREADED STUD LENGTH

	ABUT #1	ABUT #2
G-1 - G-4	7"	7"
G-5	9"	7"
G-6	12"	7"
G-7	12"	7"

BARNES & JARNIS, INC.
CONSULTING ENGINEERS
BOSTON, MASS. 02116

STATEWIDE - SOUTHEAST REGION
BHF MEMB(21)
SHEET 33 OF 34
BRIDGE 8
FOR REFERENCE ONLY

STATE OF VERMONT
AGENCY OF TRANSPORTATION

TOWN OF BRATTLEBORO	Bridge No. 8
Highway No. U.S. RTE. 5	Log Sta.
U.S. RTE. 5 OVER WEST RIVER	Surv. Sta. 171+54
DECK EXPANSION JOINT - STAGE II	
Designed by V. J. WALSH	Drawn by C. R. GAY
Checked by V. J. WALSH date 7-84	Bridge Design Supervisor
PROJECT	PROJECT NO.
BRATTLEBORO	BRM2000(9)
Bridge Sheet No. BR111	Sheet 44 of 124